

Anti-Ly-6A.2/Ly-6E.1 Recombinant Rabbit Monoclonal Antibody



Catalog #: 2338

Aliases

Ly-6A.2/Ly-6E.1; Stem cell antigen 1 (SCA-1); T-cell-activating protein (TAP)

Background

Gene Name: LY6A

NCBI Gene Entry: [105375795](#)

UniProt Entry: [P05533](#)

Application Information

Molecular Weight: Predicted, 14 kDa; observed, 14 kDa

Clonality: Rabbit monoclonal antibody

Clone ID: 24GB370

Species Reactivity: Mouse

Applications Tested: Western blotting (WB), immunocytochemistry (IC)

Immunogen

A synthesized peptide derived from mouse LY6A

Isotype

Rabbit IgG

Storage Buffer

Supplied in PBS (pH 7.4) containing 50% glycerol, and 0.02% sodium azide.

Storage

Store at -20 °C for one year.

Recommended Dilutions

Western Blotting (WB): 1:1,000-1:5,000

Immunocytochemistry (IC): 1:100-1:1,000

Note: This product is for research use only.

Validation Data

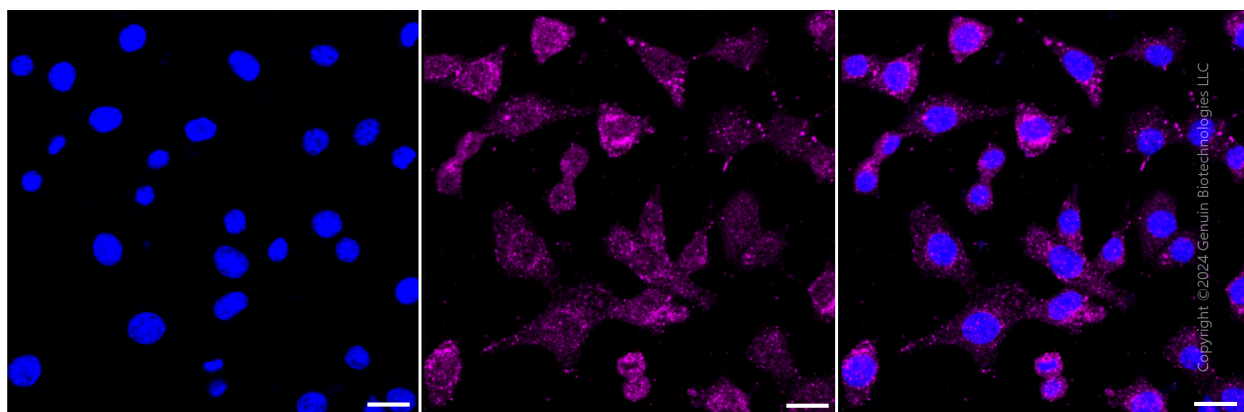
SUPPORT

SUPPORT@GENUINBIOTECH.COM
TEL: +1-540-855-7041

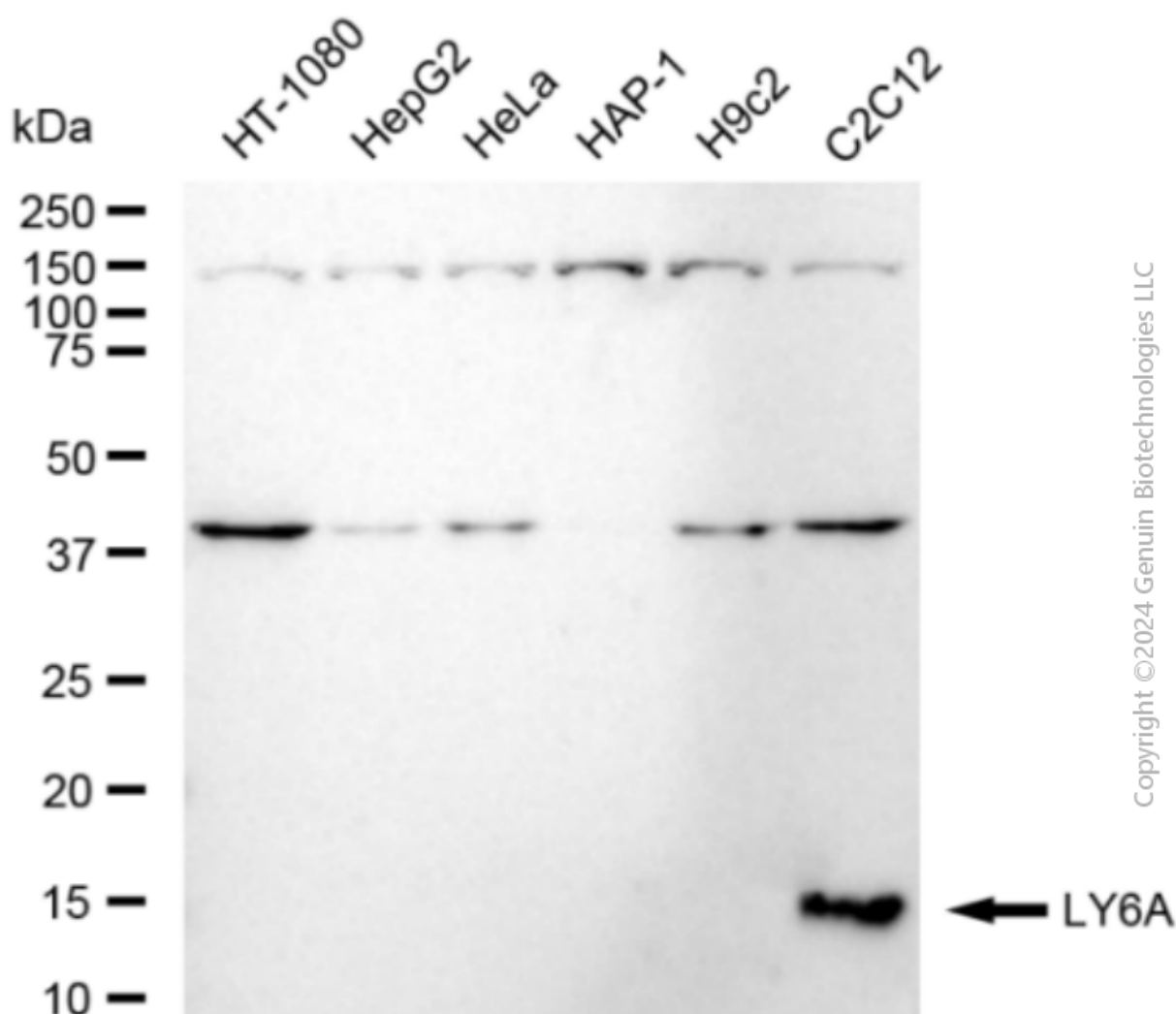
ORDERS

SALES@GENUINBIOTECH.COM
FAX: +1-540-855-7041

WWW.GENUINBIOTECH.COM



Immunocytochemical staining of C2C12 cells with anti-LY6A antibody (Cat#2338, 1:1,000). Nuclei were stained blue with DAPI; LY6A was stained magenta with Alexa Fluor® 647. Images were taken using Leica stellaris 5. Protein abundance based on laser Intensity and smart gain: Medium. Scale bar: 20 μ m.



Anti-Ly-6A.2/Ly-6E.1 Recombinant Rabbit Monoclonal Antibody

PAGE 3

Western blotting analysis using anti-LY6A antibody (Cat#2338). Total cell lysates (30 µg) from various cell lines were loaded and separated by SDS-PAGE. The blot was incubated with anti-LY6A antibody (Cat#2338, 1:5,000) and HRP-conjugated goat anti-rabbit secondary antibody (Cat#201, 1:20,000) respectively. Image was developed using FeQ™ ECL Substrate Kit (Cat#226).

SUPPORT

SUPPORT@GENUINBIOTECH.COM
TEL: +1-540-855-7041

ORDERS

SALES@GENUINBIOTECH.COM
FAX: +1-540-855-7041

WWW.GENUINBIOTECH.COM