

Anti-LIM Domain Only 2 Recombinant Rabbit Monoclonal Antibody



Catalog #: 2343

Aliases

LIM Domain Only 2; RHOM2; RBTN2; TTG2; RBTN1; T-Cell Translocation Protein 2; T-Cell Translocation Gene 2; Cysteine-Rich Protein TTG-2; LIM Domain Only Protein 2; Rhombotin-Like 1; Rhombotin-2; LMO-2

Background

Gene Name: LMO2

NCBI Gene Entry: [4005](#)

UniProt Entry: [P25791](#)

Application Information

Molecular Weight: Predicted, 18 kDa; observed, 18 kDa

Clonality: Rabbit monoclonal antibody

Clone ID: 24GB395

Species Reactivity: Human, mouse, rat

Applications Tested: Western blotting (WB), flow cytometry (FCM), immunocytochemistry (IC)

Immunogen

A synthesized peptide derived from human LMO2

Isotype

Rabbit IgG

Storage Buffer

Supplied in PBS (pH 7.4) containing 50% glycerol, and 0.02% sodium azide.

Storage

Store at -20 °C for one year.

Recommended Dilutions

Western Blotting (WB): 1:1,000-1:5,000

Flow Cytometry (FCM): 1:2,000

Immunocytochemistry (IC): 1:100-1:1,000

Note: This product is for research use only.

SUPPORT

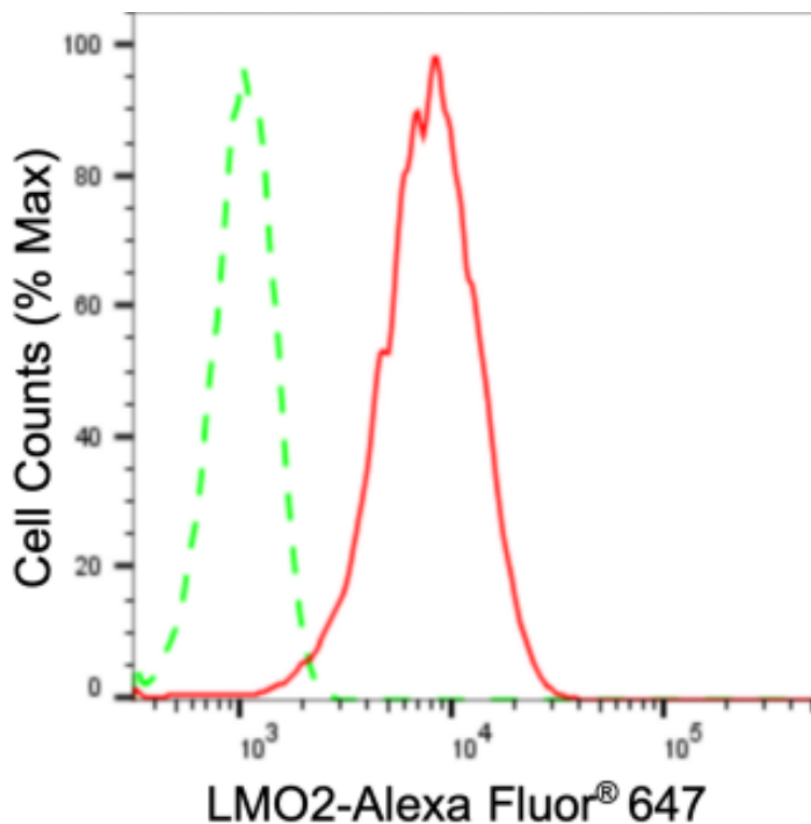
SUPPORT@GENUINBIOTECH.COM
TEL: +1-540-855-7041

ORDERS

SALES@GENUINBIOTECH.COM
FAX: +1-540-855-7041

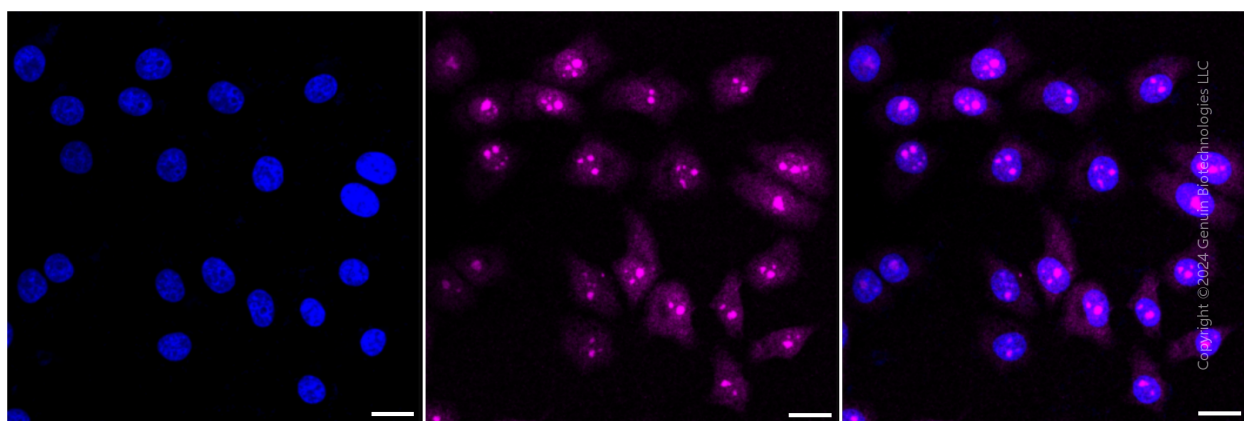
WWW.GENUINBIOTECH.COM

Validation Data



Copyright ©2024 Genuin Biotechnologies LLC

Flow cytometric analysis of LMO2 expression in HepG2 cells using LMO2 antibody (Cat#2343, 1:2,000). Green, isotype control; red, LMO2.



Copyright ©2024 Genuin Biotechnologies LLC

Immunocytochemical staining of HepG2 cells with anti-LMO2 antibody (Cat#2343, 1:1,000). Nuclei were stained blue with DAPI; LMO2 was stained magenta with Alexa Fluor® 647. Images were taken using Leica stellaris 5. Protein abundance based on laser Intensity and smart gain: High. Scale bar: 20 µm.

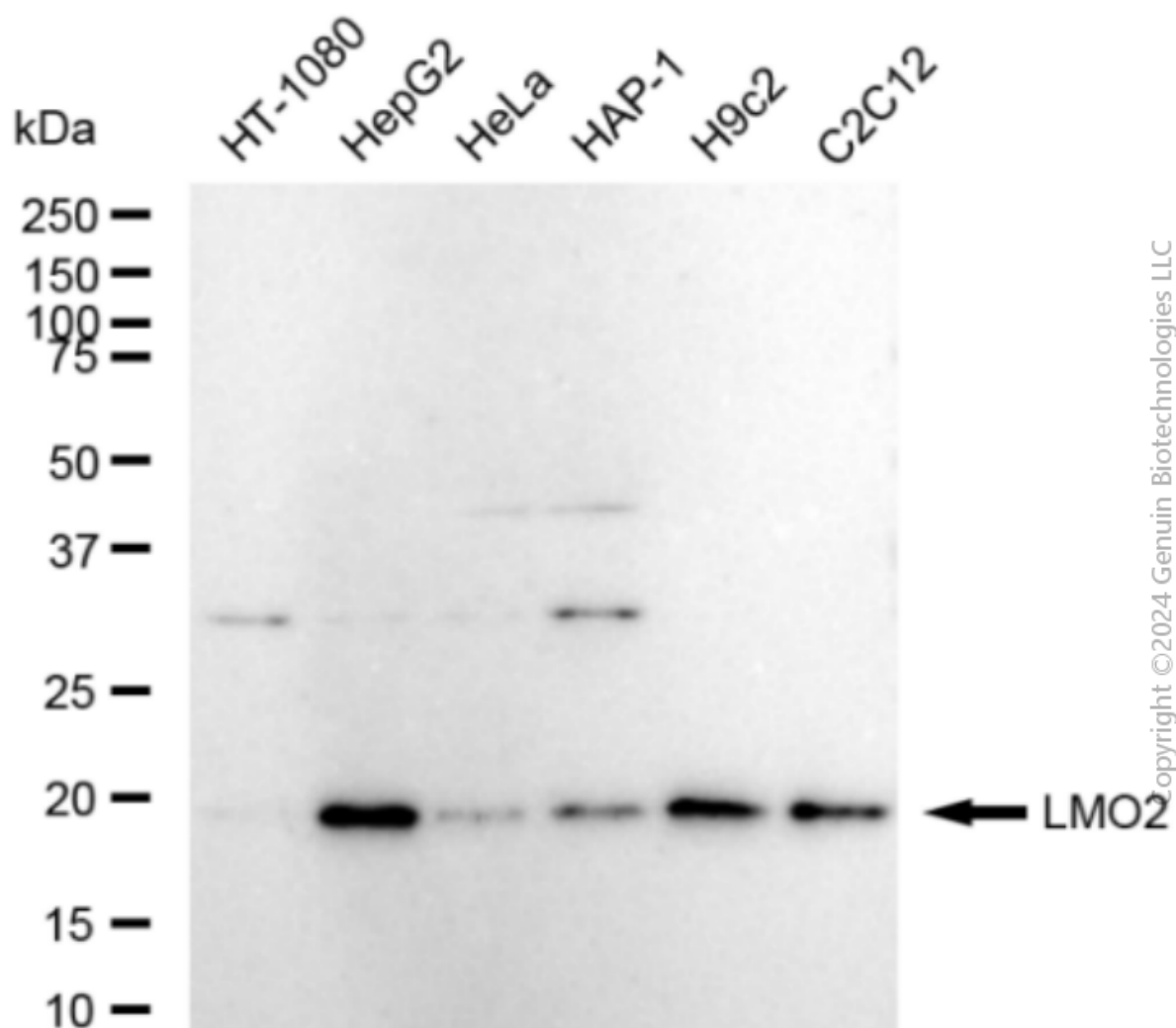
SUPPORT

SUPPORT@GENUINBIOTECH.COM
TEL: +1-540-855-7041

ORDERS

SALES@GENUINBIOTECH.COM
FAX: +1-540-855-7041

WWW.GENUINBIOTECH.COM



Western blotting analysis using anti-LMO2 antibody (Cat#2343). Total cell lysates (30 μ g) from various cell lines were loaded and separated by SDS-PAGE. The blot was incubated with anti-LMO2 antibody (Cat#2343, 1:5,000) and HRP-conjugated goat anti-rabbit secondary antibody (Cat#201, 1:20,000) respectively. Image was developed using FeQ™ ECL Substrate Kit (Cat#226).