

# Anti-NDC80 Recombinant Rabbit Monoclonal Antibody



**Catalog #: 2348**

## Aliases

NDC80 Kinetochore Complex Component; HEC1; HEC; HsNDC80; KNTC2; TID3; Retinoblastoma-Associated Protein HEC; Highly Expressed In Cancer Protein; Kinetochore Protein NDC80 Homolog; Kinetochore-Associated Protein 2; Kinetochore Associated 2; Kinetochore Protein Hec1; HsHec1; Highly Expressed In Cancer, Rich In Leucine Heptad Repeats (Yeast); NDC80 Kinetochore Complex Component Homolog (S. Cerevisiae); Highly Expressed In Cancer, Rich In Leucine Heptad Repeats; NDC80 Homolog, Kinetochore Complex Component; NDC80 Kinetochore Complex Component Homolog

## Background

Gene Name: NDC80

NCBI Gene Entry: [10403](#)

UniProt Entry: [O14777](#)

## Application Information

Molecular Weight: Predicted, 74 kDa; observed, 74 kDa

Clonality: Rabbit monoclonal antibody

Clone ID: 24GB415

Species Reactivity: Human

Applications Tested: Western blotting (WB), flow cytometry (FCM), immunocytochemistry (IC)

## Immunogen

A synthesized peptide derived from human HEC1

## Isotype

Rabbit IgG

## Storage Buffer

Supplied in PBS (pH 7.4) containing 50% glycerol, and 0.02% sodium azide.

## Storage

Store at -20 °C for one year.

## Recommended Dilutions

Western Blotting (WB): 1:1,000-1:5,000

Flow Cytometry (FCM): 1:2,000

---

### SUPPORT

SUPPORT@GENUINBIOTECH.COM  
TEL: +1-540-855-7041

### ORDERS

SALES@GENUINBIOTECH.COM  
FAX: +1-540-855-7041

[WWW.GENUINBIOTECH.COM](http://WWW.GENUINBIOTECH.COM)

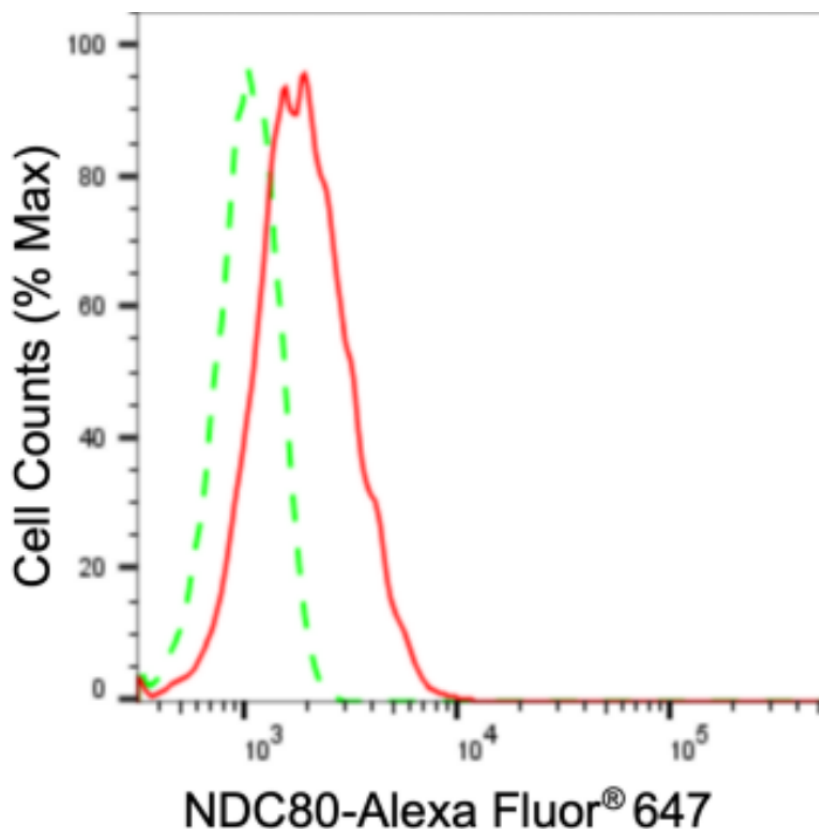
# Anti-NDC80 Recombinant Rabbit Monoclonal Antibody

PAGE 2

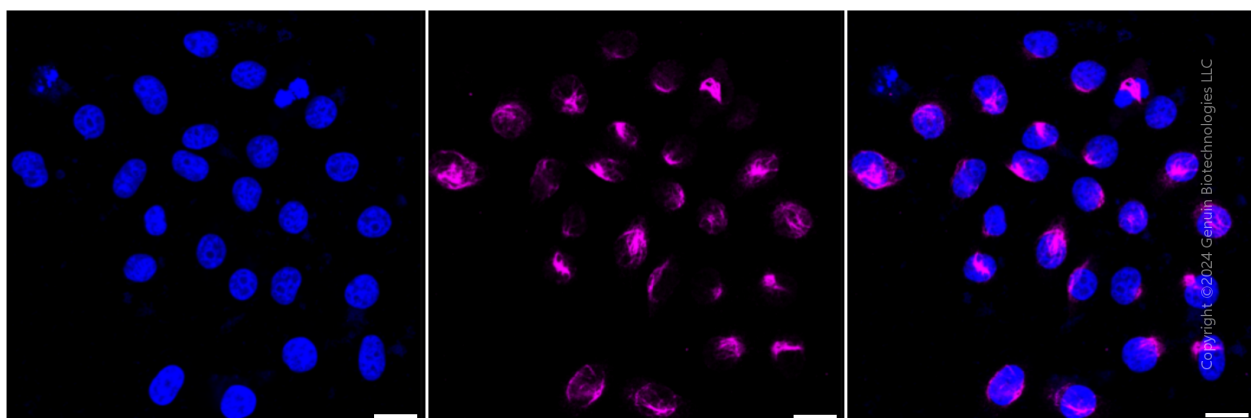
Immunocytochemistry (IC): 1:100-1:1,000

**Note:** This product is for research use only.

## Validation Data



Copyright ©2024 Genuin Biotechnologies LLC



Copyright ©2024 Genuin Biotechnologies LLC

### SUPPORT

SUPPORT@GENUINBIOTECH.COM  
TEL: +1-540-855-7041

### ORDERS

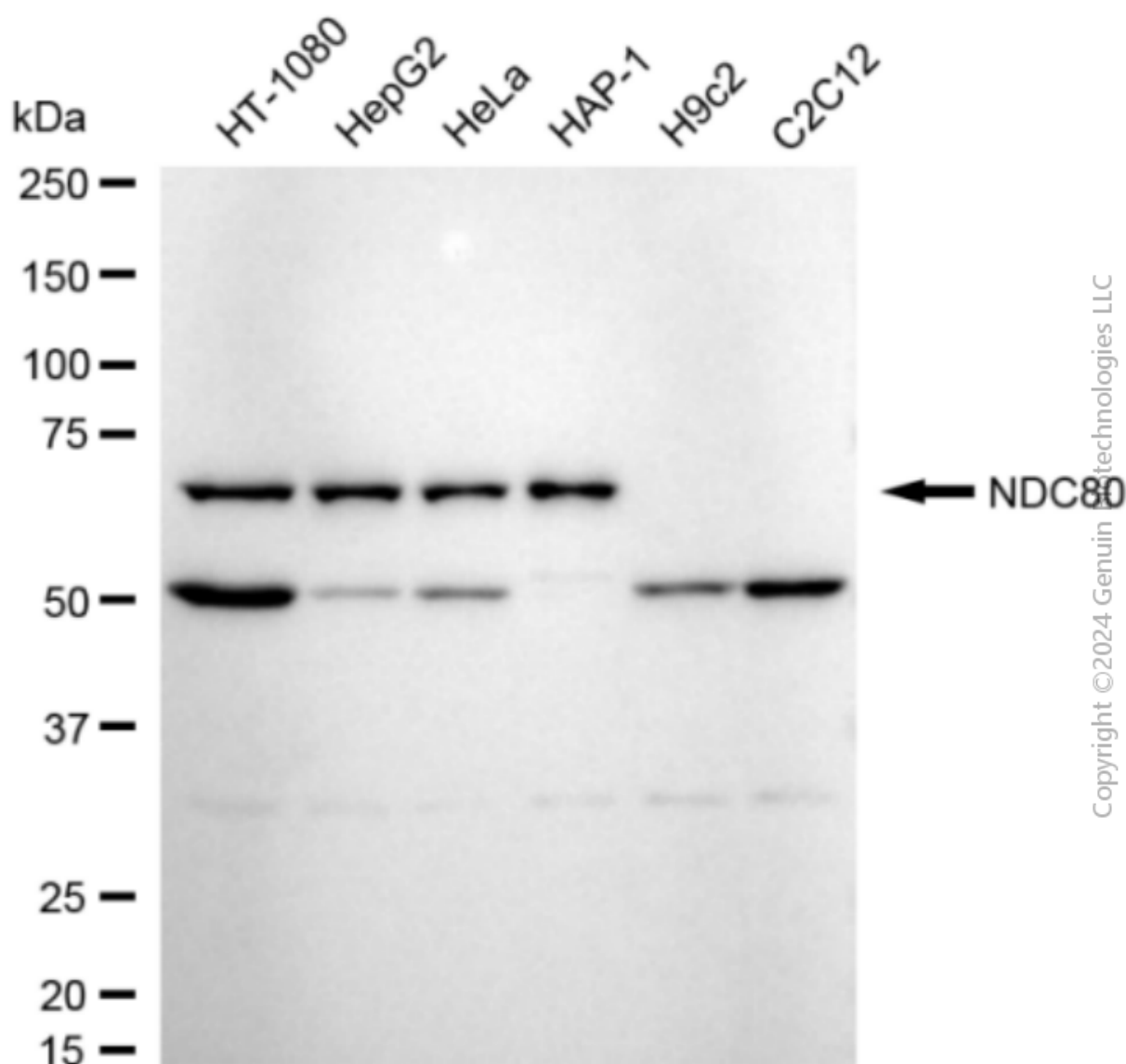
SALES@GENUINBIOTECH.COM  
FAX: +1-540-855-7041

WWW.GENUINBIOTECH.COM

## Anti-NDC80 Recombinant Rabbit Monoclonal Antibody

PAGE 3

Images were taken using Leica stellaris 5. Protein abundance based on laser Intensity and smart gain: High. Scale bar: 20  $\mu$ m.



Western blotting analysis using anti-NDC80 antibody (Cat#2348). Total cell lysates (30  $\mu$ g) from various cell lines were loaded and separated by SDS-PAGE. The blot was incubated with anti-NDC80 antibody (Cat#2348, 1:5,000) and HRP-conjugated goat anti-rabbit secondary antibody (Cat#201, 1:20,000) respectively. Image was developed using FeQ™ ECL Substrate Kit (Cat#226).

### SUPPORT

SUPPORT@GENUINBIOTECH.COM  
TEL: +1-540-855-7041

### ORDERS

SALES@GENUINBIOTECH.COM  
FAX: +1-540-855-7041

WWW.GENUINBIOTECH.COM