

Anti-Meis Homeobox 1 Recombinant Rabbit Monoclonal Antibody



Catalog #: 2349

Aliases

Meis Homeobox 1; Homeobox Protein Meis1; Meis1, Myeloid Ecotropic Viral Integration Site 1 Homolog (Mouse); Meis1, Myeloid Ecotropic Viral Integration Site 1 Homolog; Leukemogenic Homolog Protein; Meis1 (Mouse) Homolog; WUGSC:H_NH0444B04.1

Background

Gene Name: MEIS1

NCBI Gene Entry: [4211](#)

UniProt Entry: [O00470](#)

Application Information

Molecular Weight: Predicted, 43 kDa; observed, 47 kDa

Clonality: Rabbit monoclonal antibody

Clone ID: 24GB420

Species Reactivity: Human, mouse, rat

Applications Tested: Western blotting (WB), flow cytometry (FCM), immunocytochemistry (IC)

Immunogen

A synthesized peptide derived from human MEIS1

Isotype

Rabbit IgG

Storage Buffer

Supplied in PBS (pH 7.4) containing 50% glycerol, and 0.02% sodium azide.

Storage

Store at -20 °C for one year.

Recommended Dilutions

Western Blotting (WB): 1:1,000-1:5,000

Flow Cytometry (FCM): 1:2,000

Immunocytochemistry (IC): 1:100-1:1,000

Note: This product is for research use only.

SUPPORT

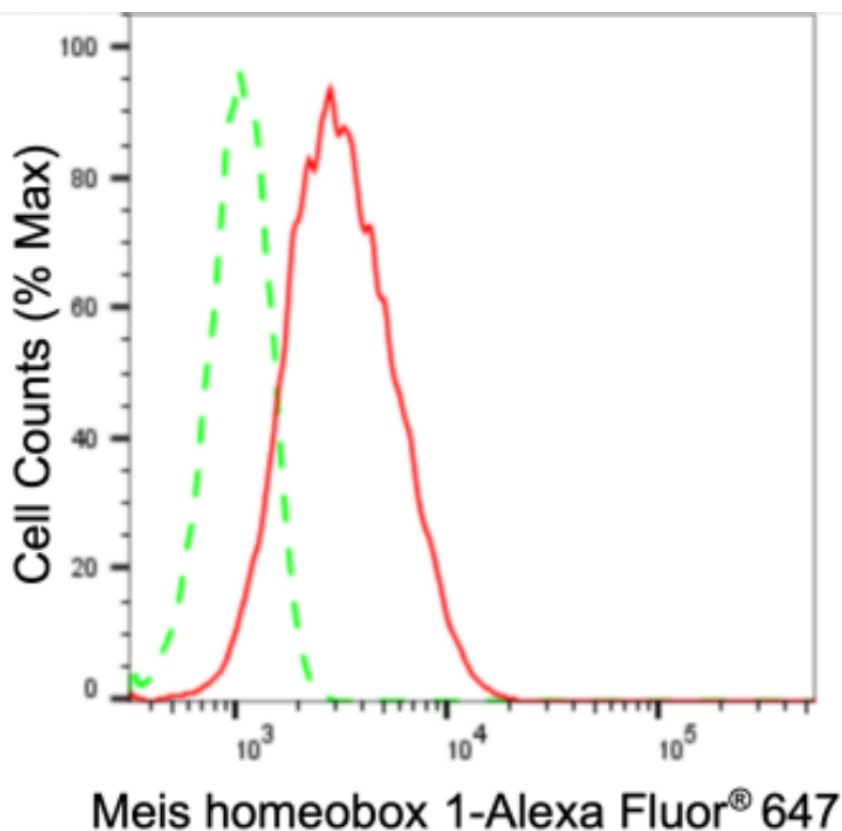
SUPPORT@GENUINBIOTECH.COM
TEL: +1-540-855-7041

ORDERS

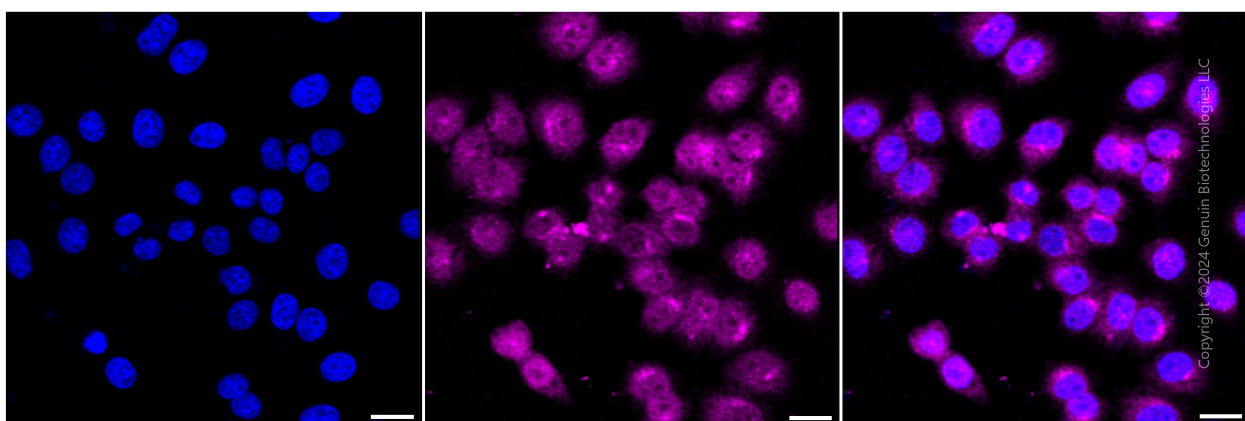
SALES@GENUINBIOTECH.COM
FAX: +1-540-855-7041

WWW.GENUINBIOTECH.COM

Validation Data



Flow cytometric analysis of Meis homeobox 1 expression in HepG2 cells using Meis homeobox 1 antibody (Cat#2349, 1:2,000). Green, isotype control; red, Meis homeobox 1.



Immunocytochemical staining of HepG2 cells with anti-Meis homeobox 1 antibody (Cat#2349, 1:1,000). Nuclei were stained blue with DAPI; Meis homeobox 1 was stained magenta with Alexa Fluor® 647. Images were taken using Leica stellaris 5. Protein abundance based on laser Intensity and smart gain: Medium. Scale bar: 20 µm.

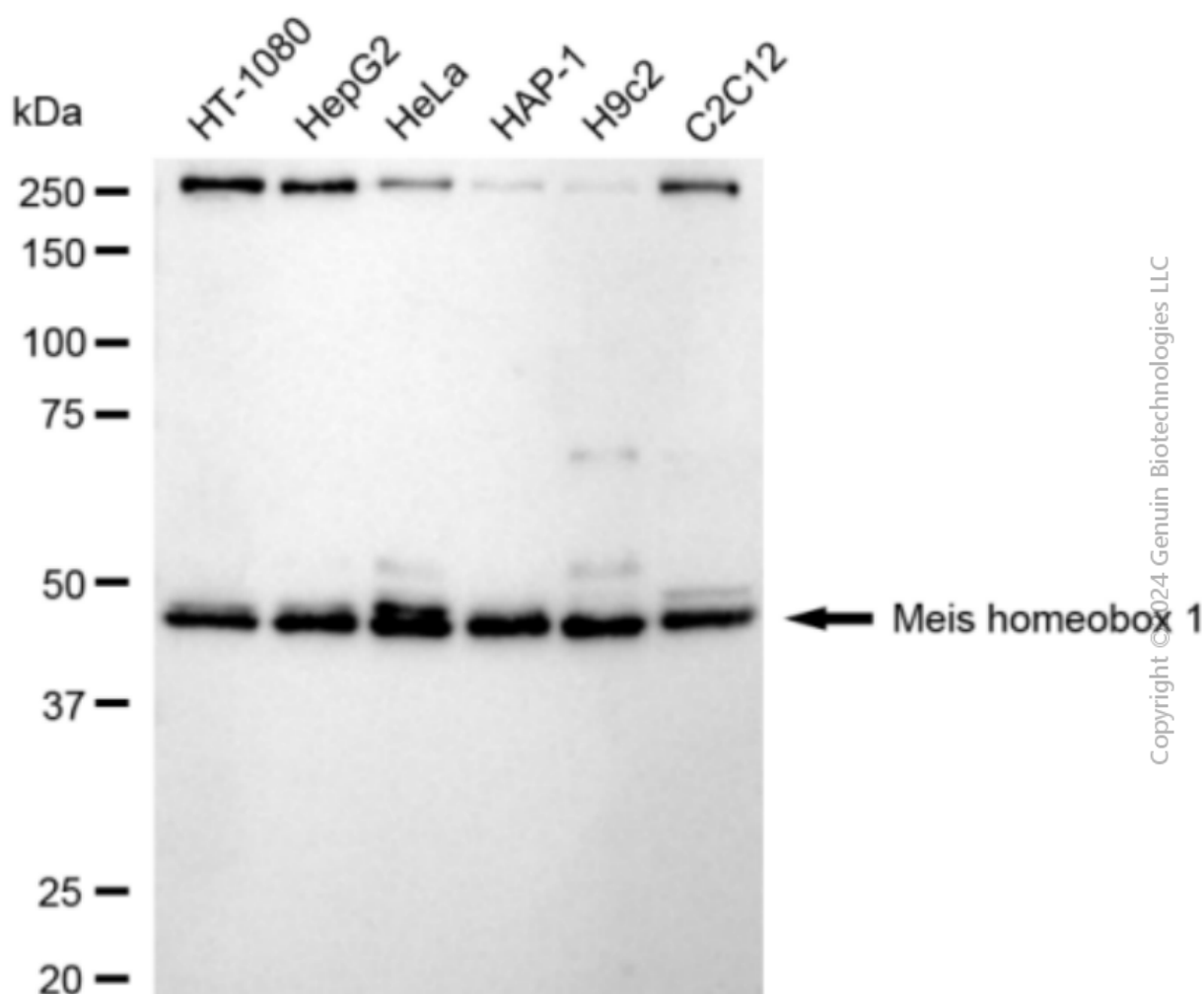
SUPPORT

SUPPORT@GENUINBIOTECH.COM
TEL: +1-540-855-7041

ORDERS

SALES@GENUINBIOTECH.COM
FAX: +1-540-855-7041

WWW.GENUINBIOTECH.COM



Western blotting analysis using anti-Meis homeobox 1 antibody (Cat#2349). Total cell lysates (30 μ g) from various cell lines were loaded and separated by SDS-PAGE. The blot was incubated with anti-Meis homeobox 1 antibody (Cat#2349, 1:5,000) and HRP-conjugated goat anti-rabbit secondary antibody (Cat#201, 1:20,000) respectively. Image was developed using FeQ™ ECL Substrate Kit (Cat#226).