

Anti-MALT1 Paracaspase Recombinant Rabbit Monoclonal Antibody



Catalog #: 2354

Aliases

MALT1 Paracaspase; PCASP1; MLT; Mucosa-Associated Lymphoid Tissue Lymphoma Translocation Protein 1; Mucosa Associated Lymphoid Tissue Lymphoma Translocation Gene 1; MALT1 Protease; MALT Lymphoma-Associated Translocation; Caspase-Like Protein; Paracaspase 1; Paracaspase-1; Paracaspase; EC 3.4.22.-; IMD12; MLT1

Background

Gene Name: MALT1

NCBI Gene Entry: [10892](#)

UniProt Entry: [Q9UDY8](#)

Application Information

Molecular Weight: Predicted, 92 kDa; observed, 92 kDa

Clonality: Rabbit monoclonal antibody

Clone ID: 24GB440

Species Reactivity: Human

Applications Tested: Western blotting (WB), flow cytometry (FCM), immunocytochemistry (IC)

Immunogen

A synthesized peptide derived from human MALT1

Isotype

Rabbit IgG

Storage Buffer

Supplied in PBS (pH 7.4) containing 50% glycerol, and 0.02% sodium azide.

Storage

Store at -20 °C for one year.

Recommended Dilutions

Western Blotting (WB): 1:1,000-1:5,000

Flow Cytometry (FCM): 1:2,000

Immunocytochemistry (IC): 1:100-1:1,000

SUPPORT

SUPPORT@GENUINBIOTECH.COM
TEL: +1-540-855-7041

ORDERS

SALES@GENUINBIOTECH.COM
FAX: +1-540-855-7041

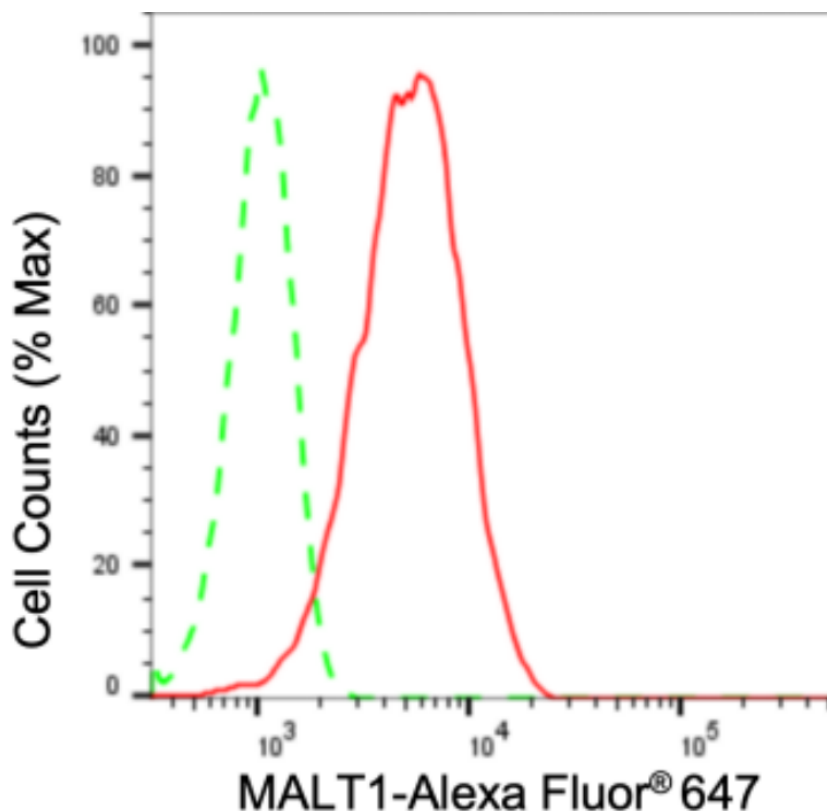
WWW.GENUINBIOTECH.COM

Anti-MALT1 Paracaspase Recombinant Rabbit Monoclonal Antibody

PAGE 2

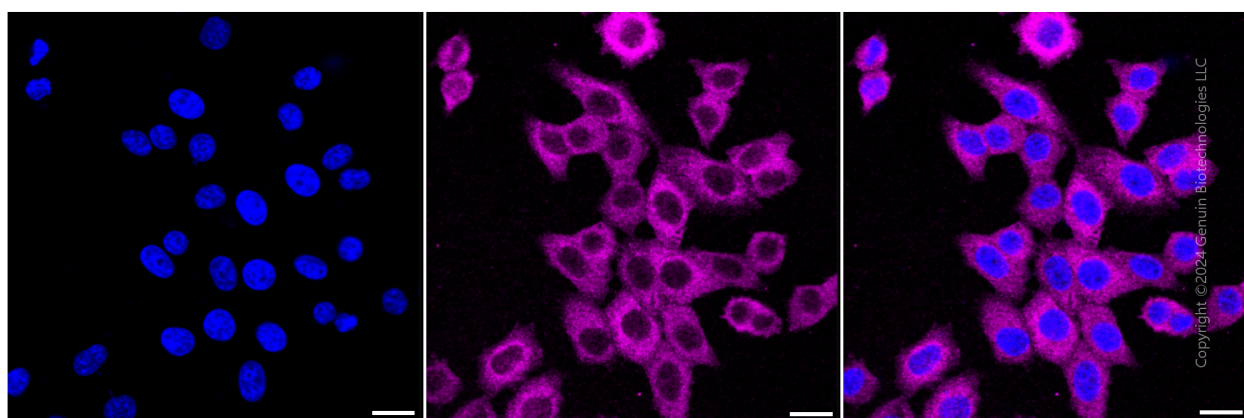
Note: This product is for research use only.

Validation Data



Copyright ©2024 Genuin Biotechnologies LLC

Flow cytometric analysis of MALT1 expression in HepG2 cells using MALT1 antibody (Cat#2354, 1:2,000). Green, isotype control; red, MALT1.



Copyright ©2024 Genuin Biotechnologies LLC

Immunocytochemical staining of HepG2 cells with anti-MALT1 antibody (Cat#2354, 1:1,000). Nuclei were stained blue with DAPI; MALT1 was stained magenta with Alexa Fluor® 647. Images were taken using Leica stellaris 5. Protein abundance based on laser Intensity and smart gain: Medium. Scale bar: 20 μm.

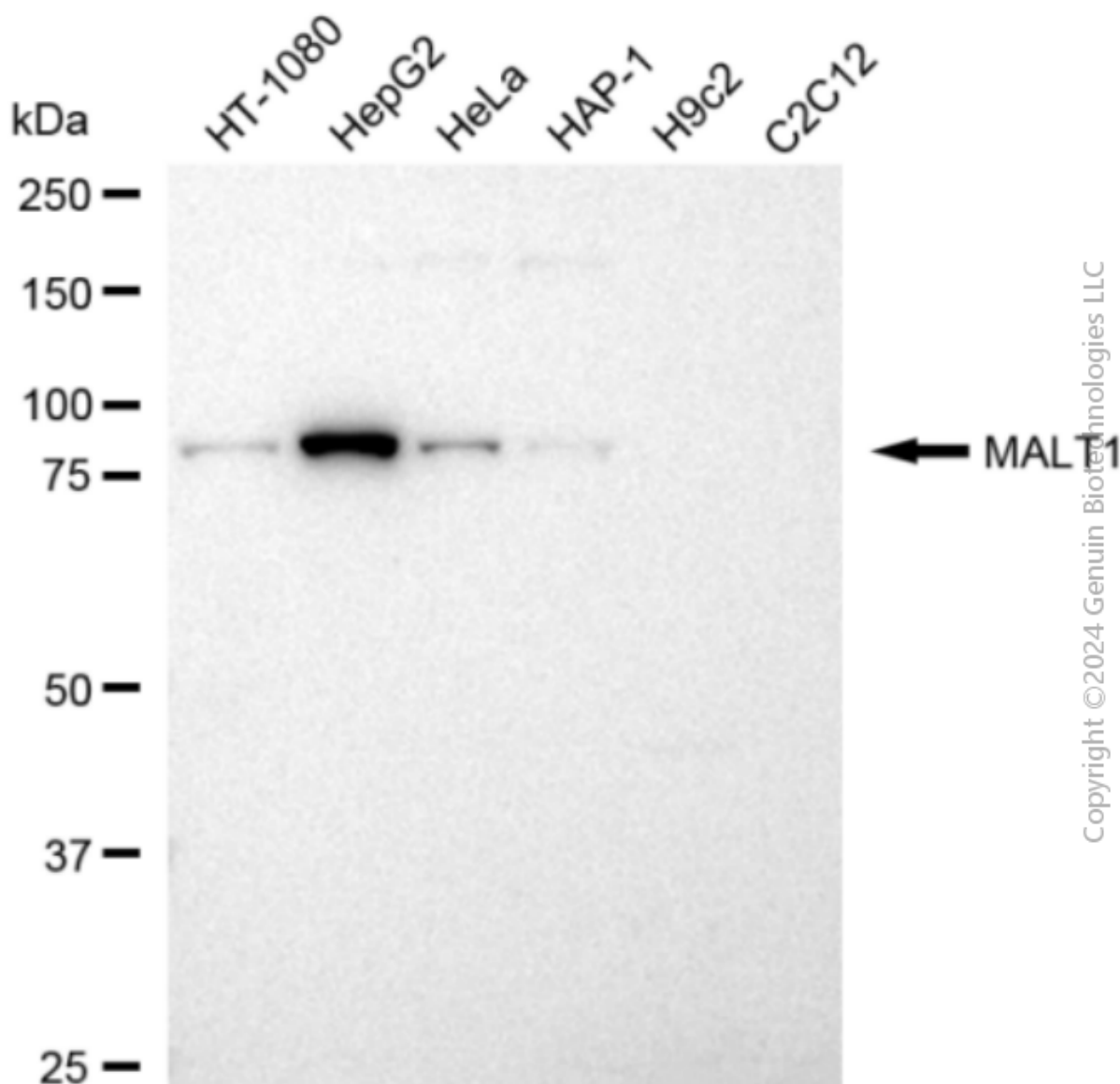
SUPPORT

SUPPORT@GENUINBIOTECH.COM
TEL: +1-540-855-7041

ORDERS

SALES@GENUINBIOTECH.COM
FAX: +1-540-855-7041

WWW.GENUINBIOTECH.COM



Western blotting analysis using anti-MALT1 antibody (Cat#2354). Total cell lysates (30 µg) from various cell lines were loaded and separated by SDS-PAGE. The blot was incubated with anti-MALT1 antibody (Cat#2354, 1:5,000) and HRP-conjugated goat anti-rabbit secondary antibody (Cat#201, 1:20,000) respectively. Image was developed using FeQ™ ECL Substrate Kit (Cat#226).