

# Anti-Natriuretic Peptide A Recombinant Rabbit Monoclonal Antibody



**Catalog #: 2356**

## Aliases

Natriuretic Peptide A; ANP; PND; Atrial Natriuretic Peptide Prohormone; Atrial Natriuretic Factor Prohormone; Natriuretic Peptide Precursor A; Natriuretic Peptides A; Atriopeptigen; PreproCDD-ANF; PreproANP; ProANF; ProANP; CDD; Cardiodilatin-Related Peptide; Prepronatriodilatin; Cardiodilatin; Cardionatrin; Atriopeptin; CDD-ANF; ATRST2; ATFB6; ANF; CDP

## Background

Gene Name: NPPA

NCBI Gene Entry: [4878](#)

UniProt Entry: [P01160](#)

## Application Information

Molecular Weight: Predicted, 16 kDa; observed, 15 kDa

Clonality: Rabbit monoclonal antibody

Clone ID: 24GB450

Species Reactivity: Human

Applications Tested: Western blotting (WB), immunocytochemistry (IC)

## Immunogen

A synthesized peptide derived from human ANP

## Isotype

Rabbit IgG

## Storage Buffer

Supplied in PBS (pH 7.4) containing 50% glycerol, and 0.02% sodium azide.

## Storage

Store at -20 °C for one year.

## Recommended Dilutions

Western Blotting (WB): 1:1,000-1:5,000

Immunocytochemistry (IC): 1:100-1:1,000

---

### SUPPORT

SUPPORT@GENUINBIOTECH.COM  
TEL: +1-540-855-7041

### ORDERS

SALES@GENUINBIOTECH.COM  
FAX: +1-540-855-7041

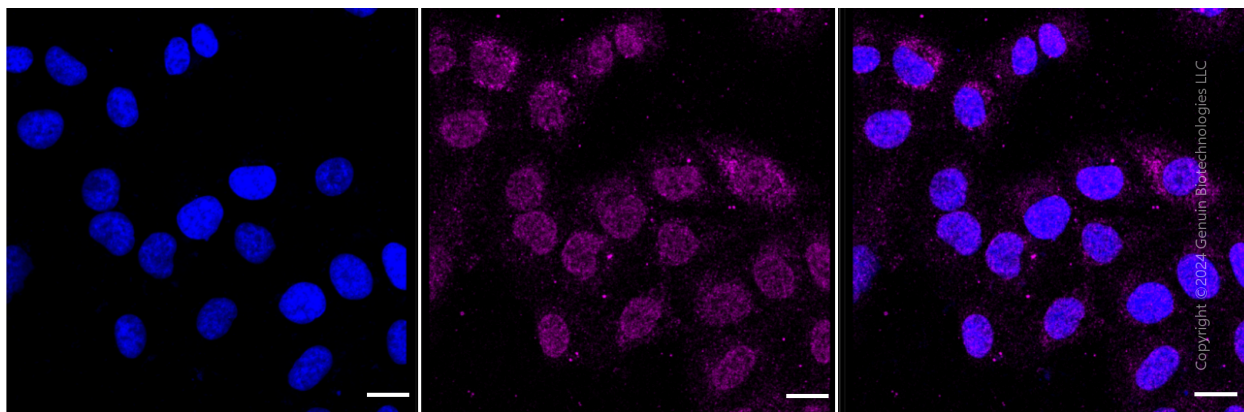
[WWW.GENUINBIOTECH.COM](http://WWW.GENUINBIOTECH.COM)

# Anti-Natriuretic Peptide A Recombinant Rabbit Monoclonal Antibody

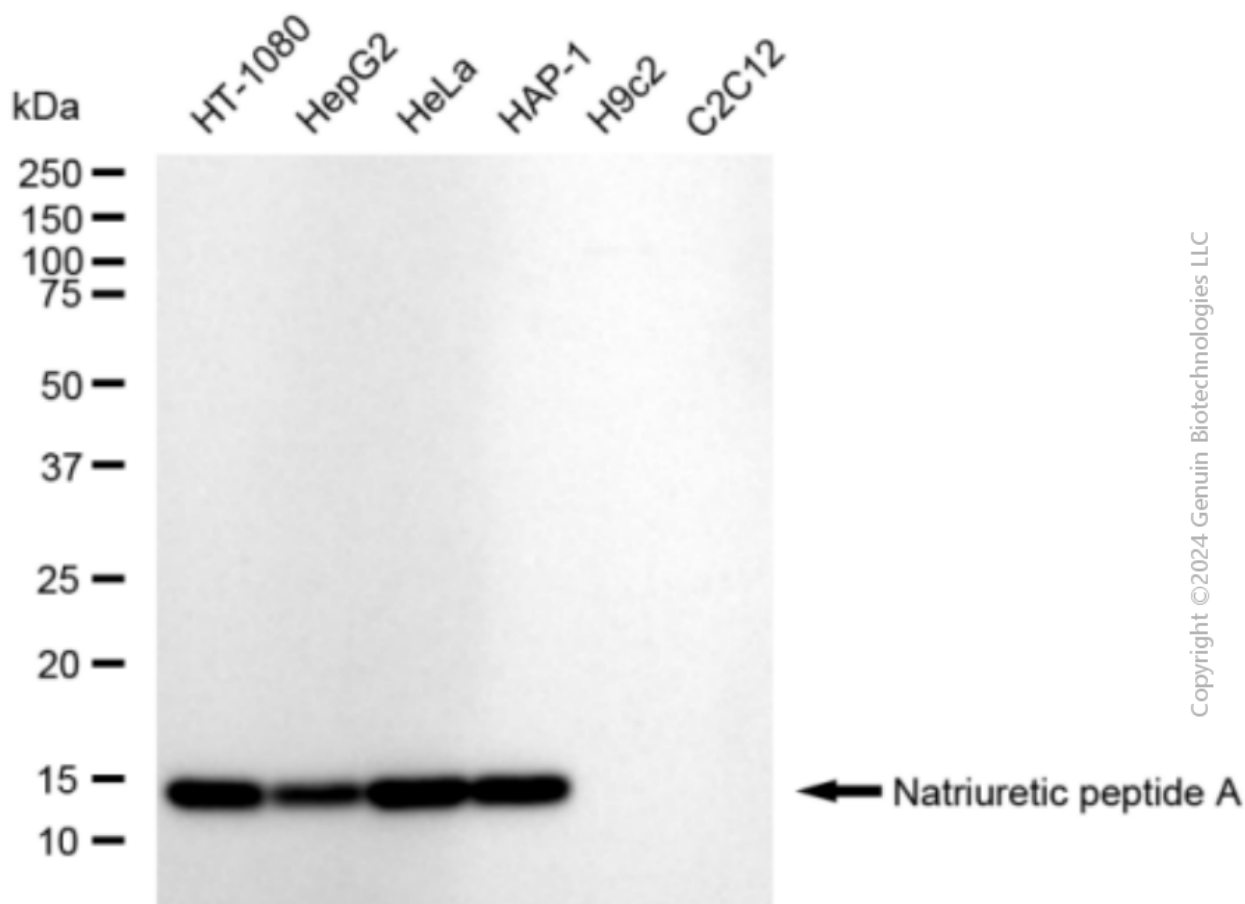
PAGE 2

**Note:** This product is for research use only.

## Validation Data



Immunocytochemical staining of HT-1080 cells with anti-Natriuretic peptide A antibody (Cat#2356, 1:1,000). Nuclei were stained blue with DAPI; Natriuretic peptide A was stained magenta with Alexa Fluor® 647. Images were taken using Leica stellaris 5. Protein abundance based on laser Intensity and smart gain: Medium. Scale bar: 20  $\mu$ m.



### SUPPORT

SUPPORT@GENUINBIOTECH.COM  
TEL: +1-540-855-7041

### ORDERS

SALES@GENUINBIOTECH.COM  
FAX: +1-540-855-7041

WWW.GENUINBIOTECH.COM

## **Anti-Natriuretic Peptide A Recombinant Rabbit Monoclonal Antibody**

PAGE 3

Western blotting analysis using anti-Natriuretic peptide A antibody (Cat#2356). Total cell lysates (30 µg) from various cell lines were loaded and separated by SDS-PAGE. The blot was incubated with anti-Natriuretic peptide A antibody (Cat#2356, 1:5,000) and HRP-conjugated goat anti-rabbit secondary antibody (Cat#201, 1:20,000) respectively. Image was developed using FeQ™ ECL Substrate Kit (Cat#226).

---

### **SUPPORT**

SUPPORT@GENUINBIOTECH.COM  
TEL: +1-540-855-7041

### **ORDERS**

SALES@GENUINBIOTECH.COM  
FAX: +1-540-855-7041

**WWW.GENUINBIOTECH.COM**