

Anti-Metadherin Recombinant Rabbit Monoclonal Antibody



Catalog #: 2357

Aliases

Metadherin; LYRIC; AEG-1; 3D3; Lysine-Rich CEACAM1 Co-Isolated Protein; Astrocyte Elevated Gene-1 Protein; Metastasis Adhesion Protein; Astrocyte Elevated Gene 1; Protein LYRIC; 3D3/LYRIC; AEG1; LYRIC/3D3

Background

Gene Name: MTDH

NCBI Gene Entry: [92140](#)

UniProt Entry: [Q86UE4](#)

Application Information

Molecular Weight: Predicted, 64 kDa; observed, 75 kDa

Clonality: Rabbit monoclonal antibody

Clone ID: 24GB455

Species Reactivity: Human, mouse, rat

Applications Tested: Western blotting (WB), flow cytometry (FCM), immunocytochemistry (IC)

Immunogen

A synthesized peptide derived from human LYRIC

Isotype

Rabbit IgG

Storage Buffer

Supplied in PBS (pH 7.4) containing 50% glycerol, and 0.02% sodium azide.

Storage

Store at -20 °C for one year.

Recommended Dilutions

Western Blotting (WB): 1:1,000-1:5,000

Flow Cytometry (FCM): 1:2,000

Immunocytochemistry (IC): 1:100-1:1,000

Note: This product is for research use only.

SUPPORT

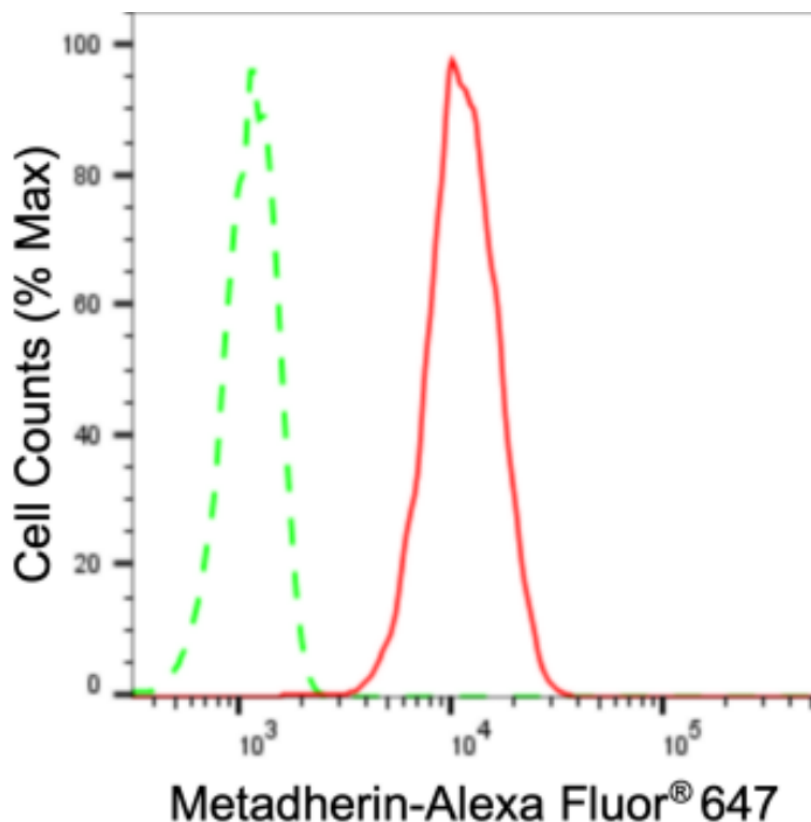
SUPPORT@GENUINBIOTECH.COM
TEL: +1-540-855-7041

ORDERS

SALES@GENUINBIOTECH.COM
FAX: +1-540-855-7041

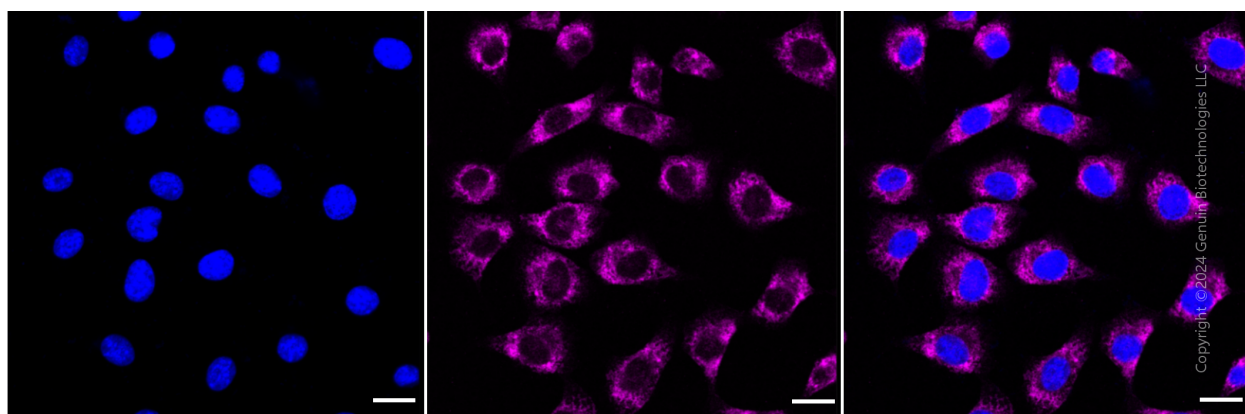
WWW.GENUINBIOTECH.COM

Validation Data



Copyright © 2024 Genuin Biotechnologies LLC

Flow cytometric analysis of Metadherin expression in C2C12 cells using Metadherin antibody (Cat#2357, 1:2,000). Green, isotype control; red, Metadherin.



Copyright © 2024 Genuin Biotechnologies LLC

Immunocytochemical staining of C2C12 cells with anti-Metadherin antibody (Cat#2357, 1:1,000). Nuclei were stained blue with DAPI; Metadherin was stained magenta with Alexa Fluor® 647. Images were taken using Leica stellaris 5. Protein abundance based on laser Intensity and smart gain: High. Scale bar: 20 µm.

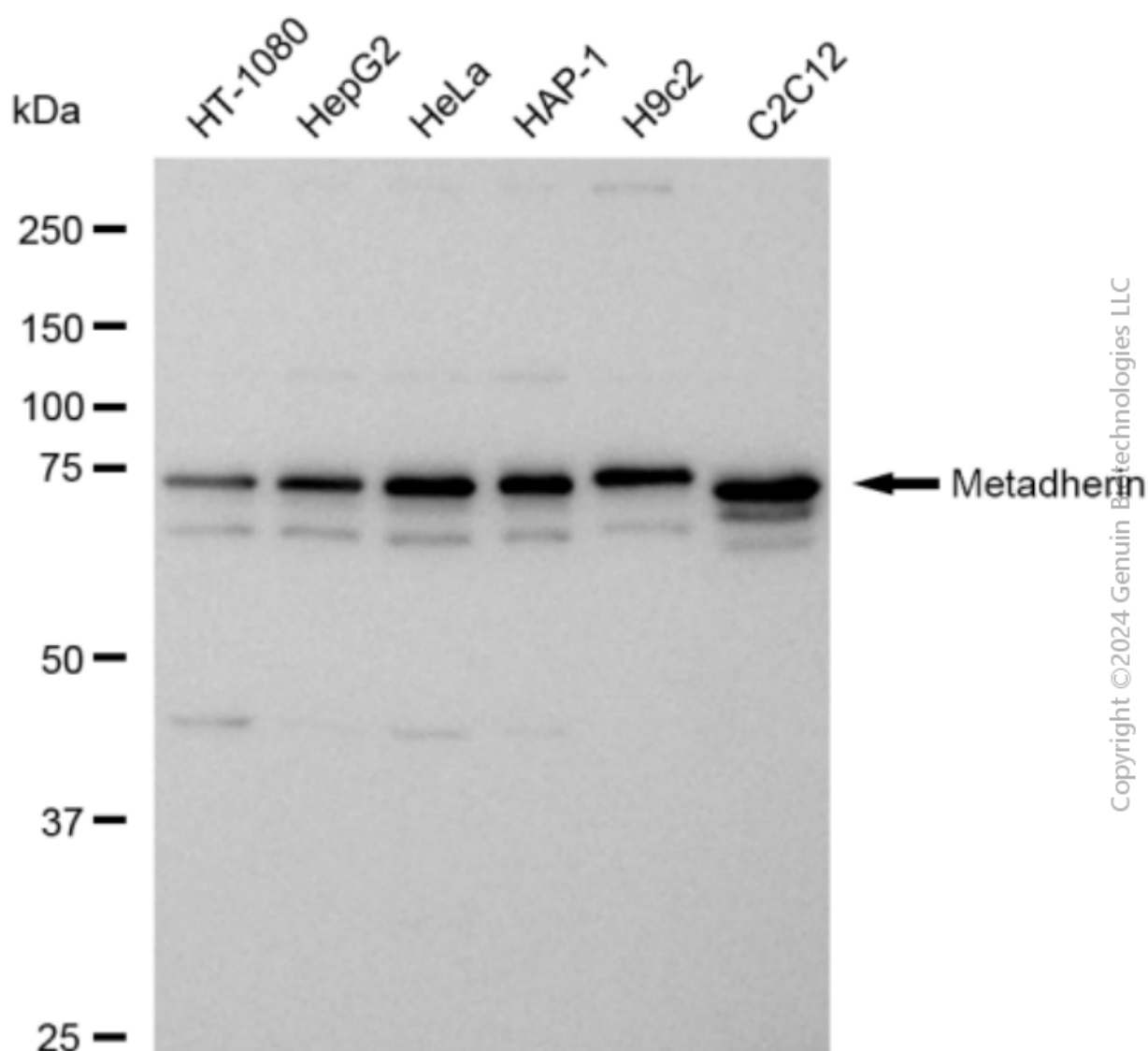
SUPPORT

SUPPORT@GENUINBIOTECH.COM
TEL: +1-540-855-7041

ORDERS

SALES@GENUINBIOTECH.COM
FAX: +1-540-855-7041

WWW.GENUINBIOTECH.COM



Copyright © 2024 Genuin Biotechnologies LLC

Western blotting analysis using anti-Metadherin antibody (Cat#2357). Total cell lysates (30 µg) from various cell lines were loaded and separated by SDS-PAGE. The blot was incubated with anti-Metadherin antibody (Cat#2357, 1:5,000) and HRP-conjugated goat anti-rabbit secondary antibody (Cat#201, 1:20,000) respectively. Image was developed using FeQ™ ECL Substrate Kit (Cat#226).