

# Anti-METTL3 Recombinant Rabbit Monoclonal Antibody



**Catalog #: 2362**

## Aliases

Methyltransferase 3, N6-Adenosine-Methyltransferase Complex Catalytic Subunit; MT-A70; N6-Adenosine-Methyltransferase 70 KDa Subunit; Spo8; M6A; MRNA (2'-O-Methyladenosine-N(6)-)-Methyltransferase; N6-Adenosine-Methyltransferase Catalytic Subunit; Methyltransferase-Like Protein 3; Methyltransferase Like 3; HMETTL3; AdoMet-Binding Subunit Of The Human MRNA (N6-Adenosine)-Methyltransferase; MRNA M(6)A Methyltransferase; EC 2.1.1.348; EC 2.1.1.62; MTA70; IME4

## Background

Gene Name: METTL3

NCBI Gene Entry: [56339](#)

UniProt Entry: [Q86U44](#)

## Application Information

Molecular Weight: Predicted, 65 kDa; observed, 70 kDa

Clonality: Rabbit monoclonal antibody

Clone ID: 24GB475

Species Reactivity: Human, mouse, rat

Applications Tested: Western blotting (WB), flow cytometry (FCM), immunocytochemistry (IC)

## Immunogen

A synthesized peptide derived from human METTL3

## Isotype

Rabbit IgG

## Storage Buffer

Supplied in PBS (pH 7.4) containing 50% glycerol, and 0.02% sodium azide.

## Storage

Store at -20 °C for one year.

## Recommended Dilutions

Western Blotting (WB): 1:1,000-1:5,000

Flow Cytometry (FCM): 1:2,000

Immunocytochemistry (IC): 1:100-1:1,000

---

### SUPPORT

SUPPORT@GENUINBIOTECH.COM  
TEL: +1-540-855-7041

### ORDERS

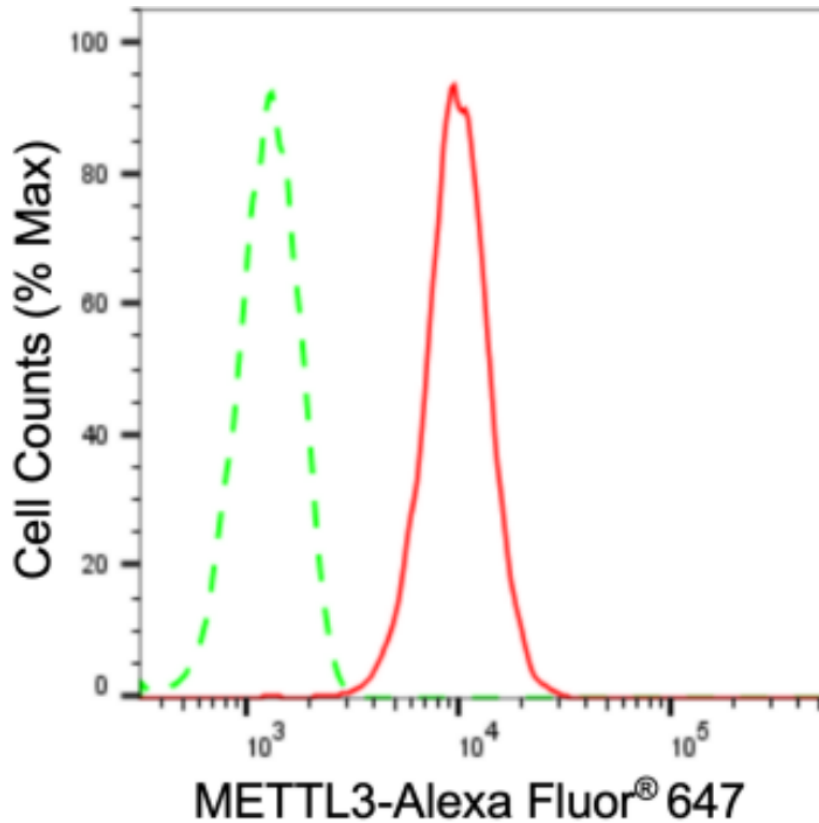
SALES@GENUINBIOTECH.COM  
FAX: +1-540-855-7041

[WWW.GENUINBIOTECH.COM](http://WWW.GENUINBIOTECH.COM)

# Anti-METTL3 Recombinant Rabbit Monoclonal Antibody

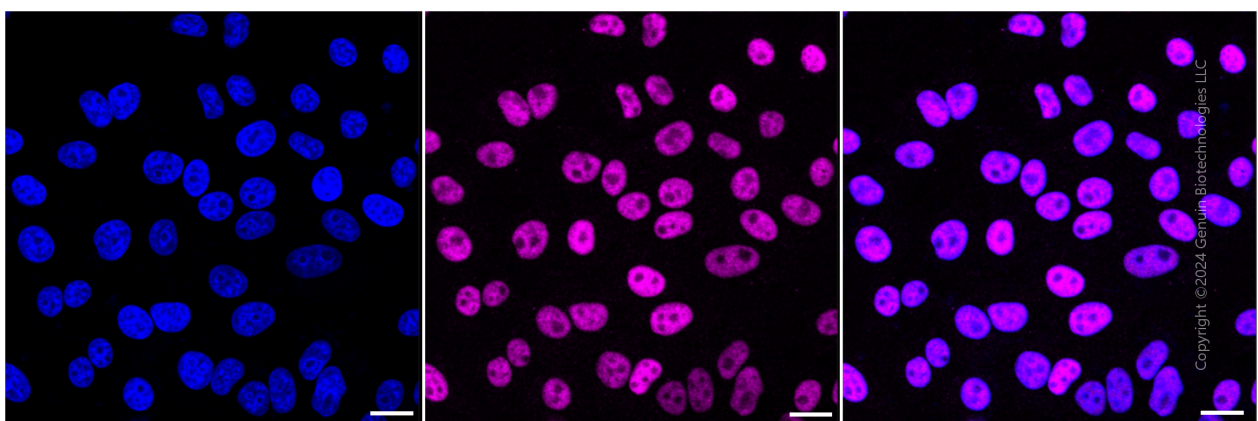
**Note:** This product is for research use only.

## Validation Data



Copyright ©2024 Genuin Biotechnologies LLC

Flow cytometric analysis of METTL3 expression in HepG2 cells using anti-METTL3 antibody (Cat#2362, 1:2,000). Green, isotype control; red, METTL3.



Copyright ©2024 Genuin Biotechnologies LLC

Immunocytochemical staining of HepG2 cells with anti-METTL3 antibody (Cat#2362, 1:1,000). Nuclei were stained blue with DAPI; METTL3 was stained magenta with Alexa Fluor® 647. Images were taken using Leica stellaris 5. Protein abundance based on laser Intensity and smart gain: Medium. Scale bar: 20 µm.

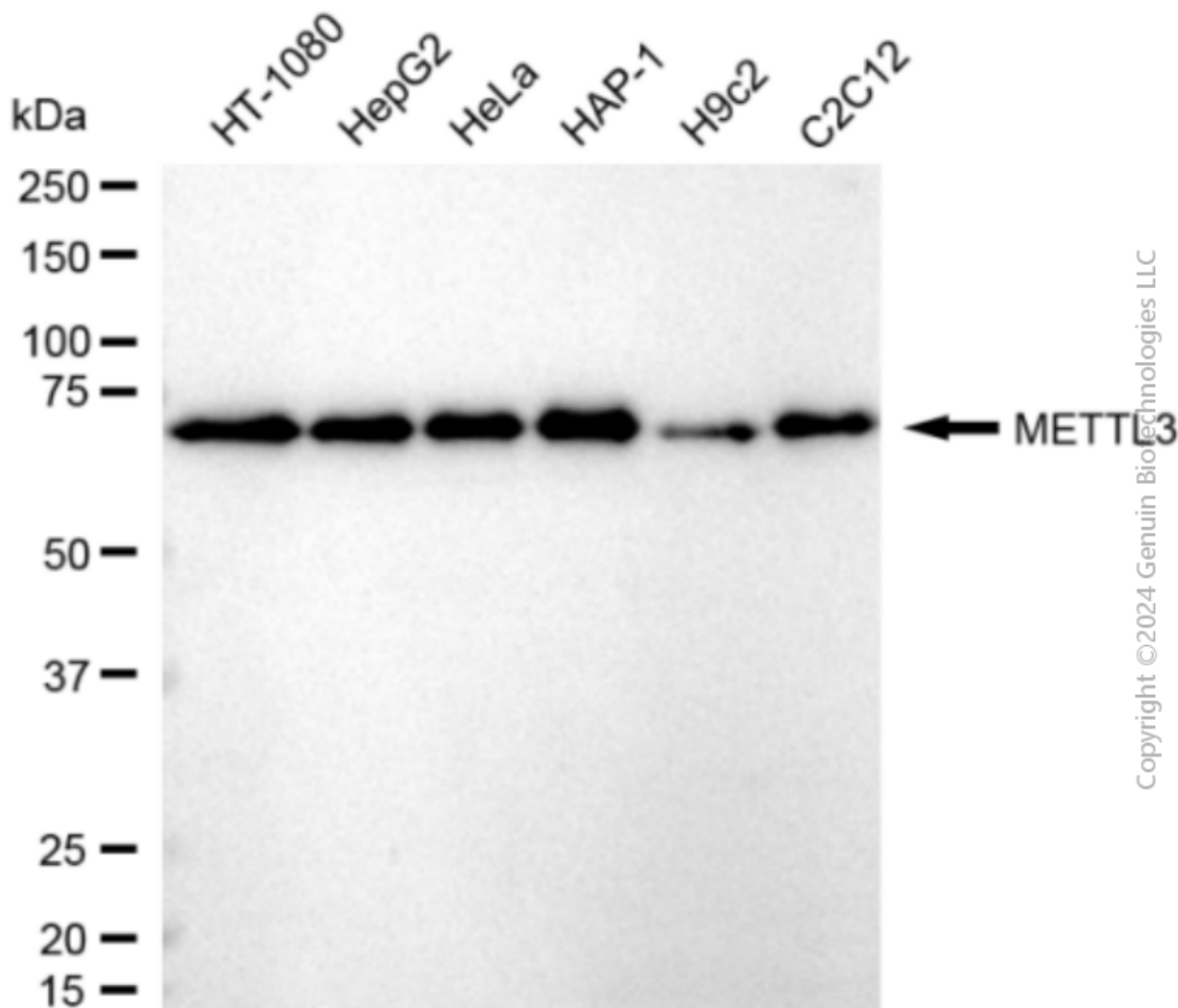
### SUPPORT

SUPPORT@GENUINBIOTECH.COM  
TEL: +1-540-855-7041

### ORDERS

SALES@GENUINBIOTECH.COM  
FAX: +1-540-855-7041

WWW.GENUINBIOTECH.COM



Western blotting analysis using anti-METTL3 antibody (Cat#2362). Total cell lysates (30  $\mu$ g) from various cell lines were loaded and separated by SDS-PAGE. The blot was incubated with anti-METTL3 antibody (Cat#2362, 1:5,000) and HRP-conjugated goat anti-rabbit secondary antibody (Cat#201, 1:20,000) respectively. Image was developed using FeQ™ ECL Substrate Kit (Cat#226).