

## Catalog #: 2366

### Aliases

NADH:Ubiquinone Oxidoreductase Core Subunit S2; NADH Dehydrogenase [Ubiquinone] Iron-Sulfur Protein 2, Mitochondrial; CI-49; NADH Dehydrogenase (Ubiquinone) Fe-S Protein 2, 49kDa (NADH-Coenzyme Q Reductase); NADH-Ubiquinone Oxidoreductase 49 KDa Subunit; Complex I 49kDa Subunit; CI-49kD; NADH Dehydrogenase (Ubiquinone) Fe-S Protein 2 (49kD) (NADH-Coenzyme Q Reductase); Complex 1, Mitochondrial Respiratory Chain, 49-KD Subunit; NADH-Ubiquinone Oxidoreductase NDUFS2 Subunit; Complex I-49kD; EC 1.6.99.5; EC 7.1.1.2; LHONAR2; MC1DN6

### Background

Gene Name: NDUFS2

NCBI Gene Entry: [4720](#)

UniProt Entry: [O75306](#)

### Application Information

Molecular Weight: Predicted, 53 kDa; observed, 45 kDa

Clonality: Rabbit monoclonal antibody

Clone ID: 24GB495

Species Reactivity: Human, mouse, rat

Applications Tested: Western blotting (WB), immunocytochemistry (IC)

### Immunogen

A synthesized peptide derived from human NDUFS2

### Isotype

Rabbit IgG

### Storage Buffer

Supplied in PBS (pH 7.4) containing 50% glycerol, and 0.02% sodium azide.

### Storage

Store at -20 °C for one year.

### Recommended Dilutions

Western Blotting (WB): 1:1,000-1:5,000

Immunocytochemistry (IC): 1:100-1:1,000

---

#### SUPPORT

SUPPORT@GENUINBIOTECH.COM  
TEL: +1-540-855-7041

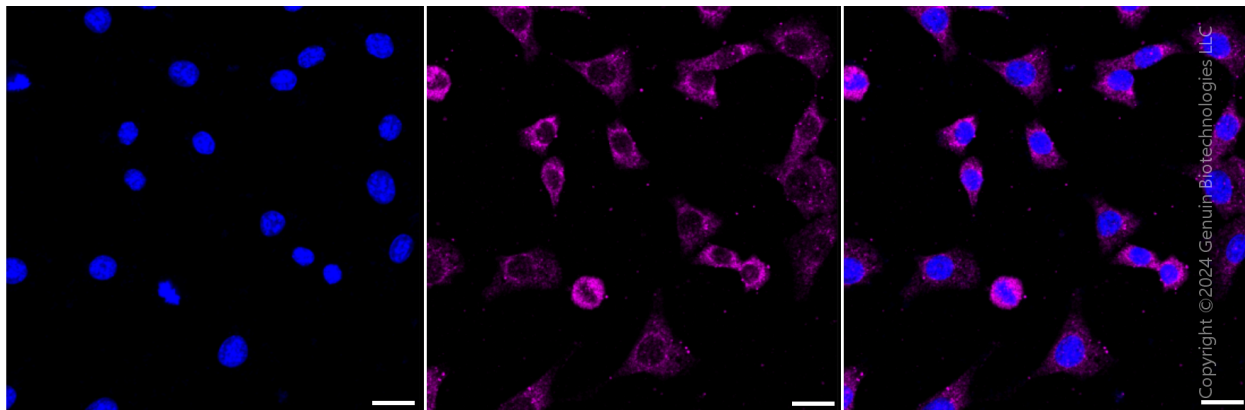
#### ORDERS

SALES@GENUINBIOTECH.COM  
FAX: +1-540-855-7041

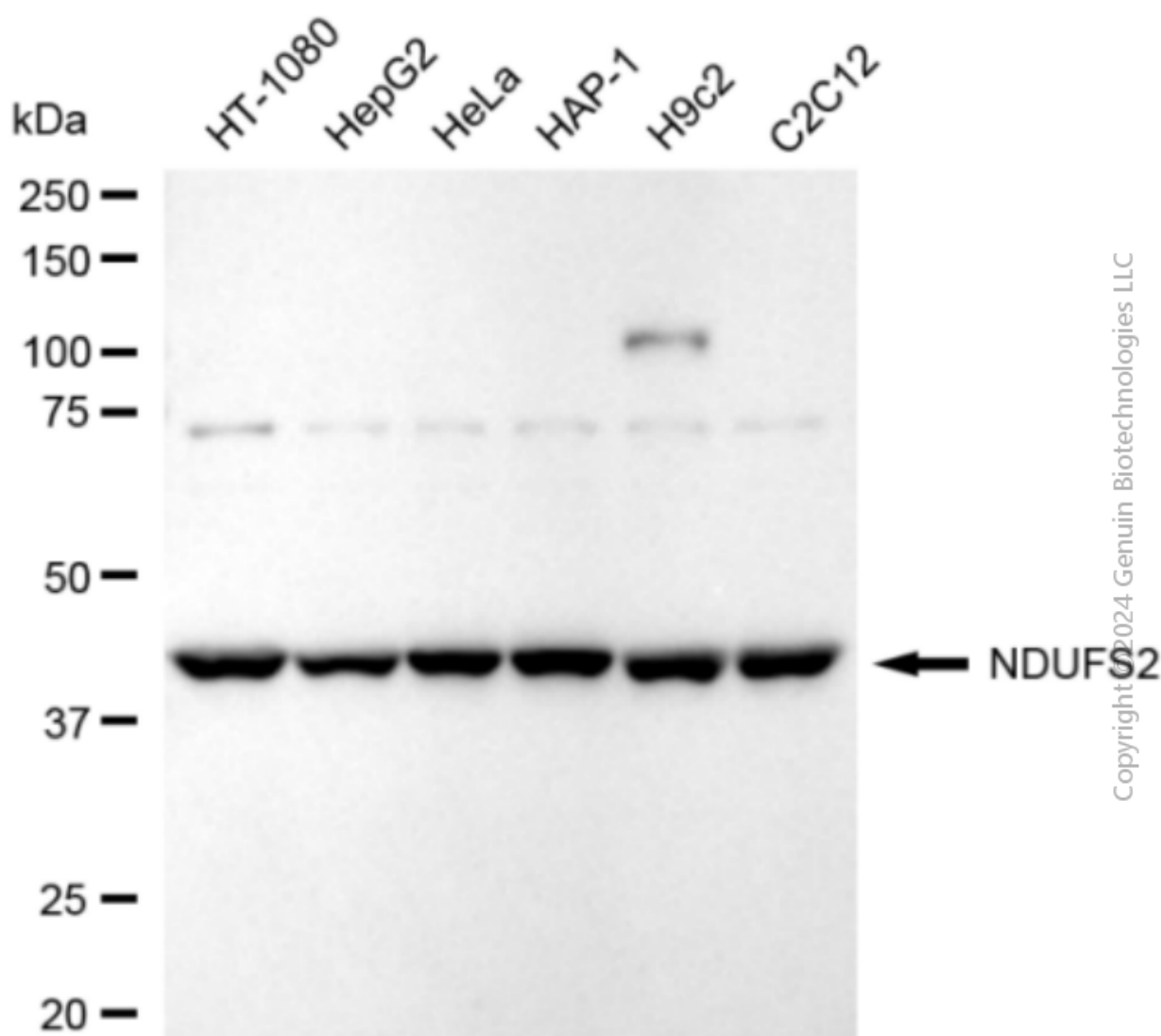
[WWW.GENUINBIOTECH.COM](http://WWW.GENUINBIOTECH.COM)

**Note:** This product is for research use only.

## Validation Data



Immunocytochemical staining of C2C12 cells with anti-NDUFS2 antibody (Cat#2366, 1:1,000). Nuclei were stained blue with DAPI; NDUFS2 was stained magenta with Alexa Fluor® 647. Images were taken using Leica stellaris 5. Protein abundance based on laser Intensity and smart gain: Medium. Scale bar: 20  $\mu$ m.



Western blotting analysis using anti-NDUFS2 antibody (Cat#2366). Total cell lysates (30 µg) from various cell lines were loaded and separated by SDS-PAGE. The blot was incubated with anti-NDUFS2 antibody (Cat#2366, 1:5,000) and HRP-conjugated goat anti-rabbit secondary antibody (Cat#201, 1:20,000) respectively. Image was developed using FeQ™ ECL Substrate Kit (Cat#226).