

Anti-NDUFB4 Recombinant Rabbit Monoclonal Antibody



Catalog #: 2367

Aliases

NADH:Ubiquinone Oxidoreductase Subunit B4; B15; NADH Dehydrogenase (Ubiquinone) 1 Beta Subcomplex, 4, 15kDa; NADH Dehydrogenase [Ubiquinone] 1 Beta Subcomplex Subunit 4; NADH-Ubiquinone Oxidoreductase B15 Subunit; Complex I B15 Subunit; Complex I-B15; CI-B15; NADH Dehydrogenase (Ubiquinone) 1 Beta Subcomplex, 4 (15kD, B15)

Background

Gene Name: NDUFB4

NCBI Gene Entry: [4710](#)

UniProt Entry: [O95168](#)

Application Information

Molecular Weight: Predicted, 15 kDa; observed, 15 kDa

Clonality: Rabbit monoclonal antibody

Clone ID: 24GB500

Species Reactivity: Human, mouse, rat

Applications Tested: Western blotting (WB), immunocytochemistry (IC)

Immunogen

A synthesized peptide derived from human NDUFB4

Isotype

Rabbit IgG

Storage Buffer

Supplied in PBS (pH 7.4) containing 50% glycerol, and 0.02% sodium azide.

Storage

Store at -20 °C for one year.

Recommended Dilutions

Western Blotting (WB): 1:1,000-1:5,000

Immunocytochemistry (IC): 1:100-1:1,000

Note: This product is for research use only.

SUPPORT

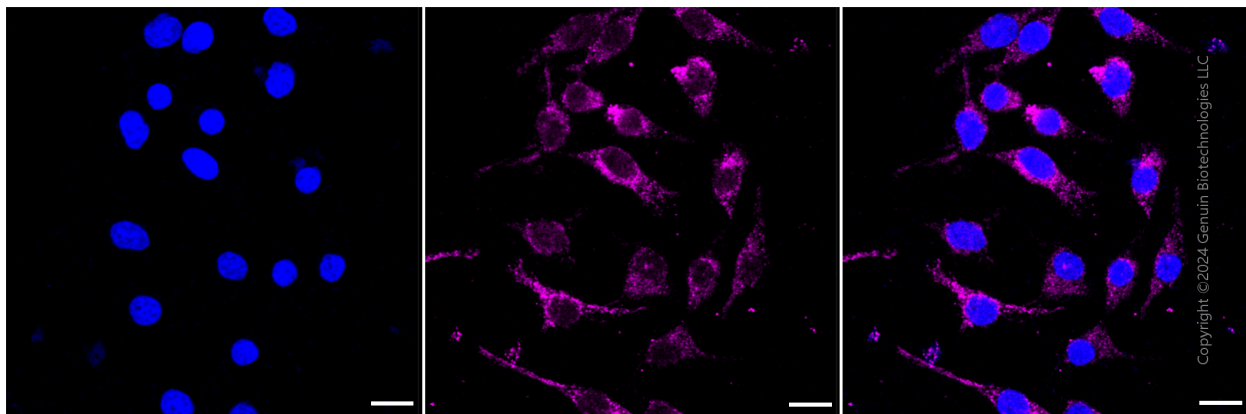
SUPPORT@GENUINBIOTECH.COM
TEL: +1-540-855-7041

ORDERS

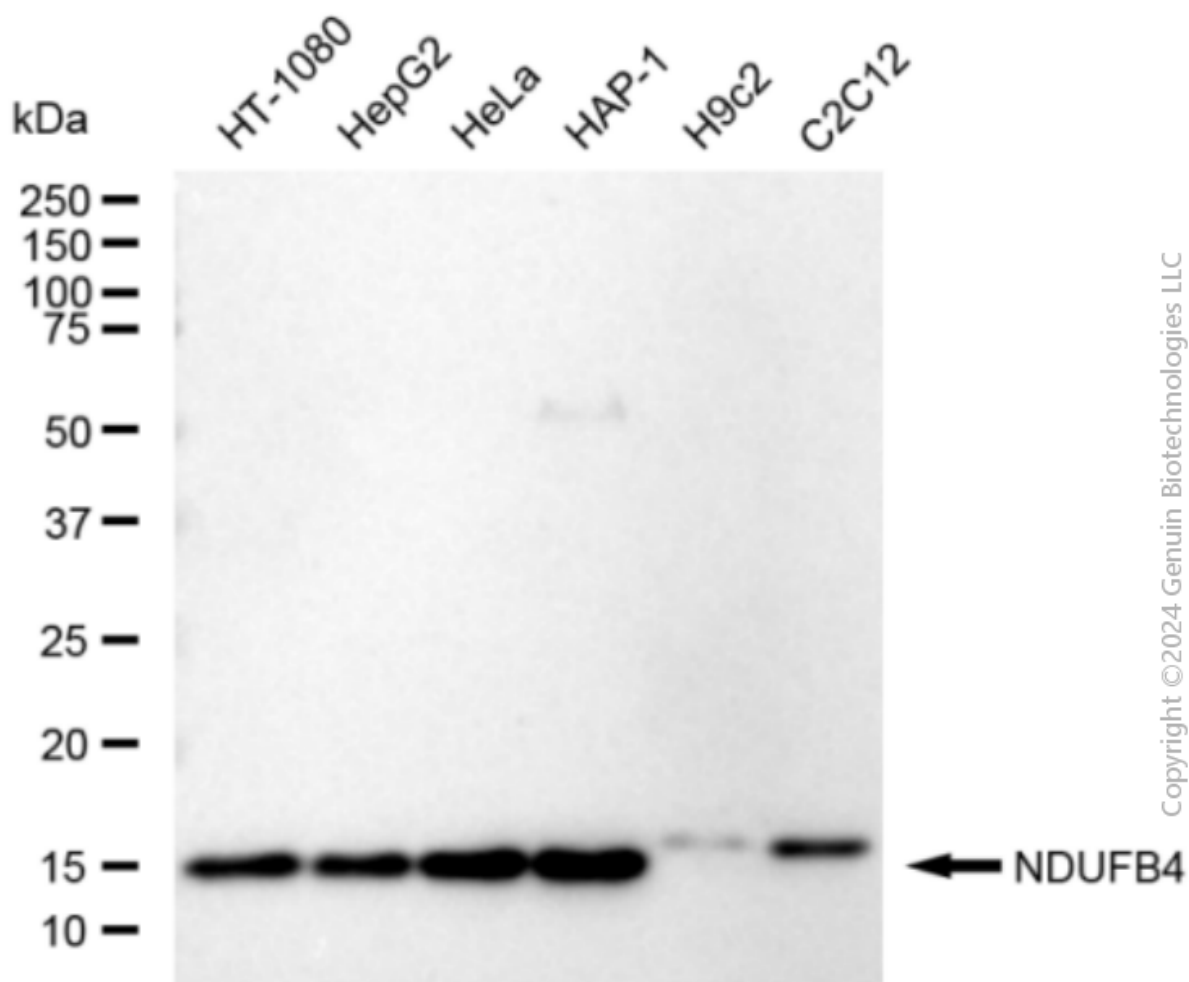
SALES@GENUINBIOTECH.COM
FAX: +1-540-855-7041

WWW.GENUINBIOTECH.COM

Validation Data



Immunocytochemical staining of HeLa cells with anti-NDUFB4 antibody (Cat#2367, 1:1,000). Nuclei were stained blue with DAPI; NDUFB4 was stained magenta with Alexa Fluor® 647. Images were taken using Leica stellaris 5. Protein abundance based on laser Intensity and smart gain: Medium. Scale bar: 20 μ m.



Western blotting analysis using anti-NDUFB4 antibody (Cat#2367). Total cell lysates (30 μ g) from various cell lines were loaded and separated by SDS-PAGE. The blot was incubated with anti-NDUFB4 antibody (Cat#2367, 1:5,000) and HRP-conjugated goat anti-rabbit secondary antibody (Cat#201, 1:20,000) respectively. Image was developed using FeQ™ ECL Substrate Kit (Cat#226).