

# Anti-Myelin Associated Glycoprotein Recombinant Rabbit Monoclonal Antibody



**Catalog #: 2372**

## Aliases

Myelin Associated Glycoprotein; SIGLEC-4A; SIGLEC4A ; S-MAG; GMA; Sialic Acid Binding Ig-Like Lectin 4A; Myelin-Associated Glycoprotein; Sialic Acid-Binding Immunoglobulin-Like Lectin 4A; Siglec-4a; SPG75

## Background

Gene Name: MAG

NCBI Gene Entry: [4099](#)

UniProt Entry: [P20916](#)

## Application Information

Molecular Weight: Predicted, 69 kDa, observed, 100 kDa

Clonality: Rabbit monoclonal antibody

Clone ID: 24GB525

Species Reactivity: Human, mouse, rat

Applications Tested: Western blotting (WB), flow cytometry (FCM), immunocytochemistry (IC)

## Immunogen

A synthesized peptide derived from human MAG

## Isotype

Rabbit IgG

## Storage Buffer

Supplied in PBS (pH 7.4) containing 50% glycerol, and 0.02% sodium azide.

## Storage

Store at -20 °C for one year.

## Recommended Dilutions

Western Blotting (WB): 1:1,000-1:5,000, Flow Cytometry (FCM): 1:2,000, Immunocytochemistry (IC): 1:100-1:1,000

**Note:** This product is for research use only.

## Validation Data

---

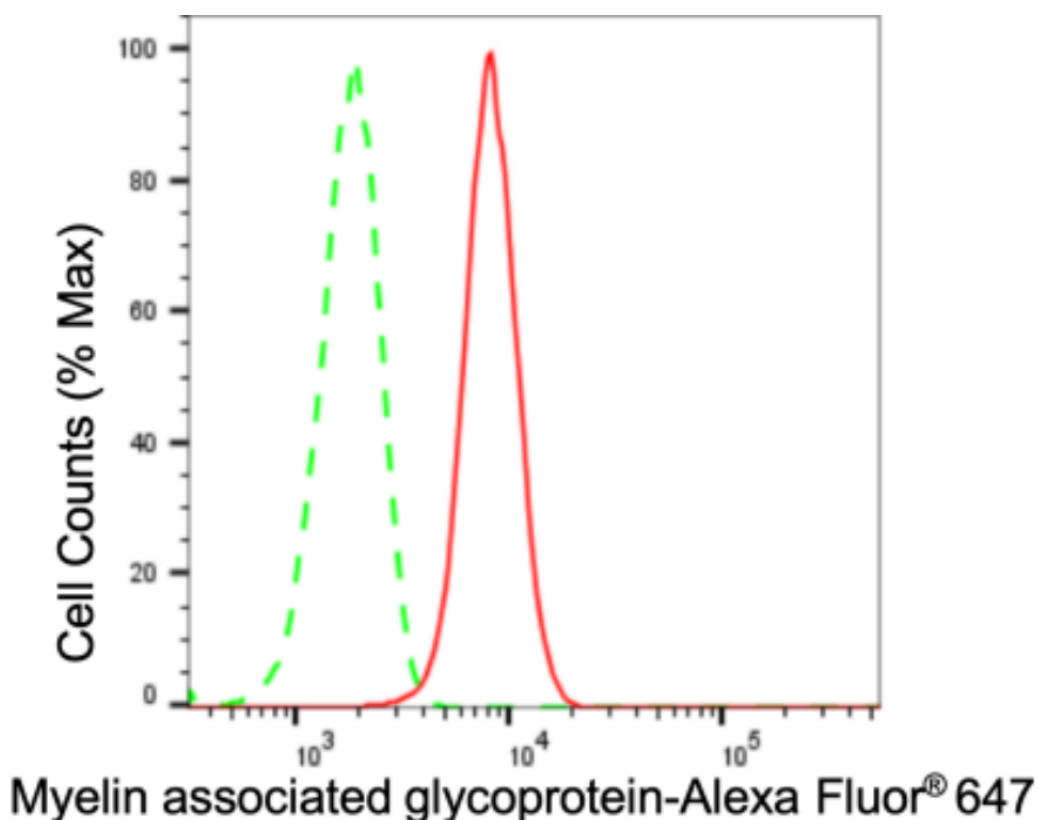
### SUPPORT

SUPPORT@GENUINBIOTECH.COM  
TEL: +1-540-855-7041

### ORDERS

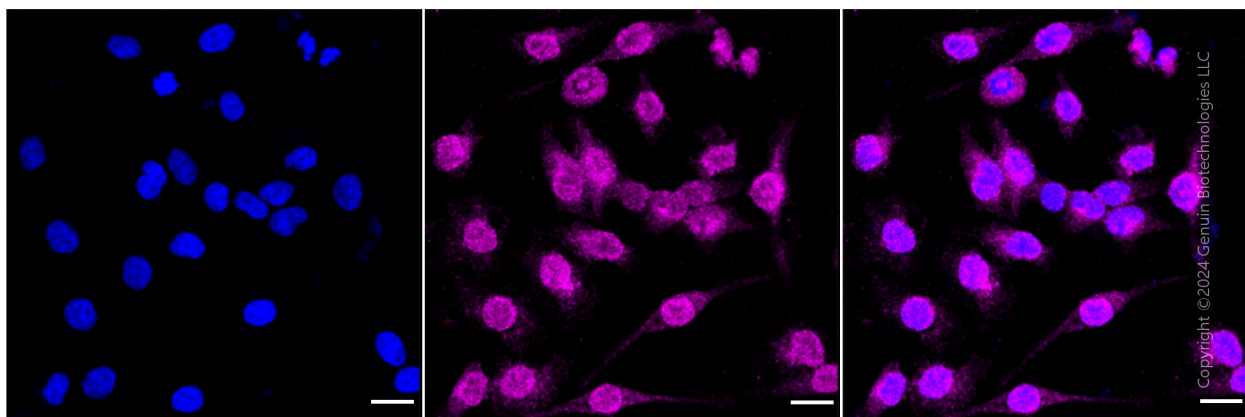
SALES@GENUINBIOTECH.COM  
FAX: +1-540-855-7041

[WWW.GENUINBIOTECH.COM](http://WWW.GENUINBIOTECH.COM)



Copyright ©2024 Genuin Biotechnologies LLC

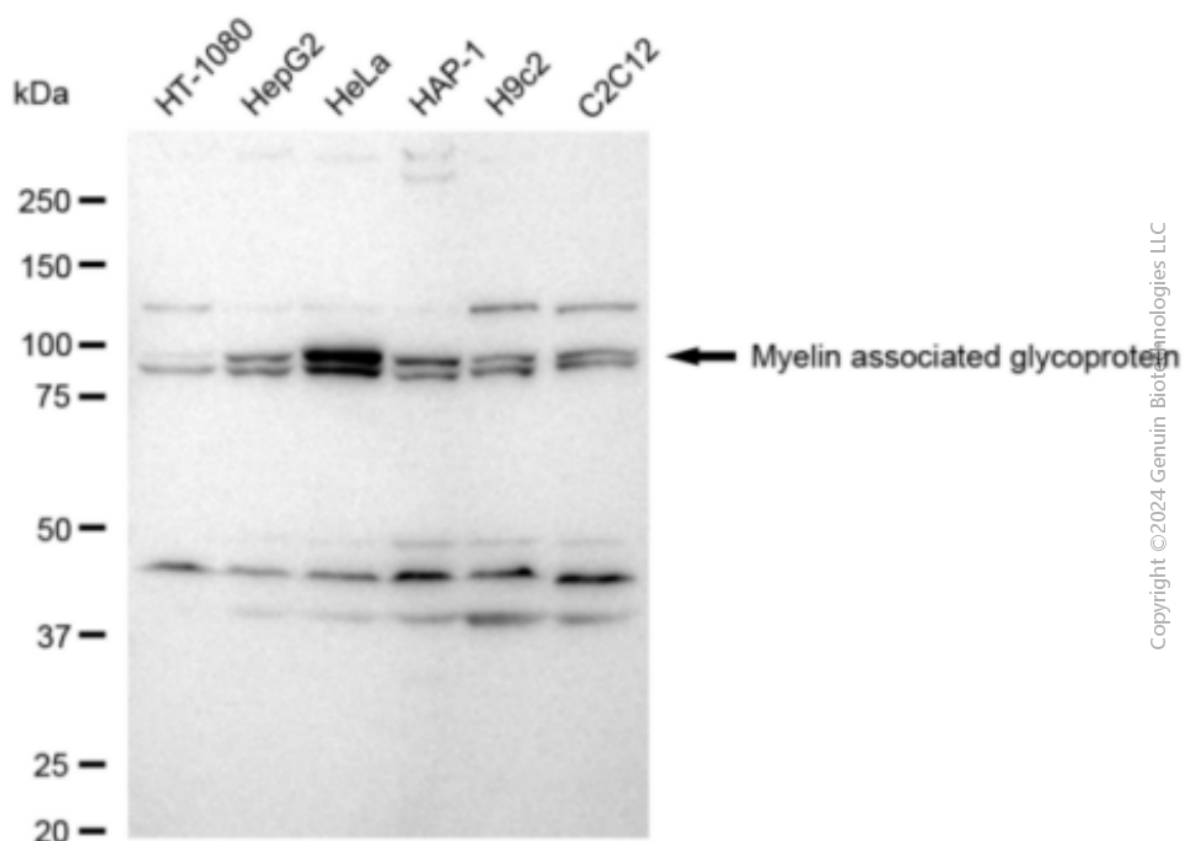
Flow cytometric analysis of Myelin associated glycoprotein expression in HeLa cells using Myelin associated glycoprotein antibody (Cat#2372, 1:2,000). Green, isotype control; red, Myelin associated glycoprotein.



Immunocytochemical staining of HeLa cells with anti-Myelin associated glycoprotein antibody (Cat#2372, 1:1,000). Nuclei were stained blue with DAPI; Myelin associated glycoprotein was stained magenta with Alexa Fluor® 647. Images were taken using Leica stellaris 5. Protein abundance based on laser Intensity and smart gain: Medium. Scale bar: 20 µm.

## Anti-Myelin Associated Glycoprotein Recombinant Rabbit Monoclonal Antibody

PAGE 3



Western blotting analysis using anti-Myelin associated glycoprotein antibody (Cat#2372). Total cell lysates (30 µg) from various cell lines were loaded and separated by SDS-PAGE. The blot was incubated with anti-Myelin associated glycoprotein antibody (Cat#2372, 1:5,000) and HRP-conjugated goat anti-rabbit secondary antibody (Cat#201, 1:20,000) respectively. Image was developed using FeQ™ ECL Substrate Kit (Cat#226).

### SUPPORT

SUPPORT@GENUINBIOTECH.COM  
TEL: +1-540-855-7041

### ORDERS

SALES@GENUINBIOTECH.COM  
FAX: +1-540-855-7041

[WWW.GENUINBIOTECH.COM](http://WWW.GENUINBIOTECH.COM)