

# Anti-NUF2 Recombinant Rabbit Monoclonal Antibody



**Catalog #: 2381**

## Aliases

NUF2 Component Of NDC80 Kinetochore Complex; NUF2R; CT106; CDCA1; NDC80 Kinetochore Complex Component NUF2; Cell Division Cycle-Associated Protein 1; Cell Division Cycle Associated 1; Cancer/Testis Antigen 106; Kinetochore Protein Nuf2; HNuf2R; HsNuf2; HNuf2; NUF2, NDC80 Kinetochore Complex Component, Homolog (S. Cerevisiae); NUF2, NDC80 Kinetochore Complex Component, Homolog

## Background

Gene Name: NUF2

NCBI Gene Entry: [83540](#)

UniProt Entry: [Q9BZD4](#)

## Application Information

Molecular Weight: Predicted, 54 kDa; observed, 48 kDa

Clonality: Rabbit monoclonal antibody

Clone ID: 24GB570

Species Reactivity: Human

Applications Tested: Western blotting (WB), flow cytometry (FCM), immunocytochemistry (IC)

## Immunogen

A synthesized peptide derived from human Nuf2

## Isotype

Rabbit IgG

## Storage Buffer

Supplied in PBS (pH 7.4) containing 50% glycerol, and 0.02% sodium azide.

## Storage

Store at -20 °C for one year.

## Recommended Dilutions

Western Blotting (WB): 1:1,000-1:5,000

Flow Cytometry (FCM): 1:2,000

Immunocytochemistry (IC): 1:100-1:1,000

---

### SUPPORT

SUPPORT@GENUINBIOTECH.COM  
TEL: +1-540-855-7041

### ORDERS

SALES@GENUINBIOTECH.COM  
FAX: +1-540-855-7041

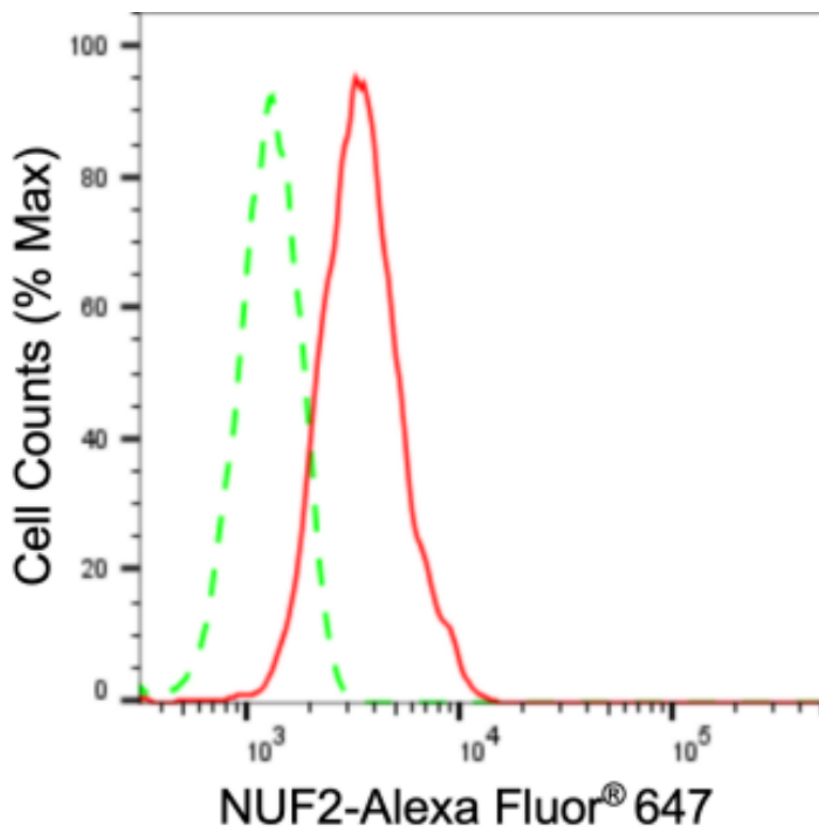
[WWW.GENUINBIOTECH.COM](http://WWW.GENUINBIOTECH.COM)

# Anti-NUF2 Recombinant Rabbit Monoclonal Antibody

PAGE 2

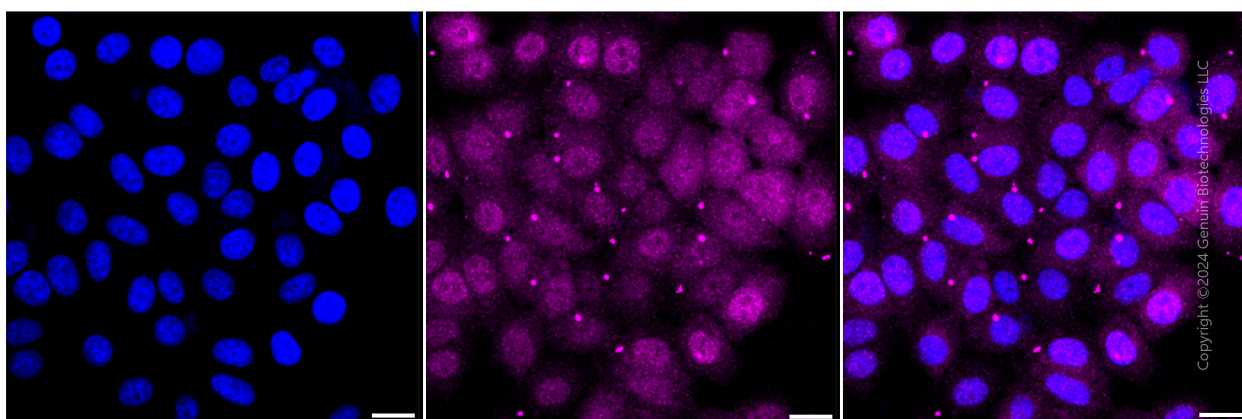
**Note:** This product is for research use only.

## Validation Data



Copyright ©2024 Genuin Biotechnologies LLC

Flow cytometric analysis of NUF2 expression in HepG2 cells using anti-NUF2 antibody (Cat#2381, 1:2,000). Green, isotype control; red, NUF2.



Copyright ©2024 Genuin Biotechnologies LLC

Immunocytochemical staining of HepG2 cells with anti-NUF2 antibody (Cat#2381, 1:1,000). Nuclei were stained blue with DAPI; NUF2 was stained magenta with Alexa Fluor® 647. Images were taken using Leica stellaris 5. Protein abundance based on laser Intensity and smart gain: Medium. Scale bar: 20 μm.

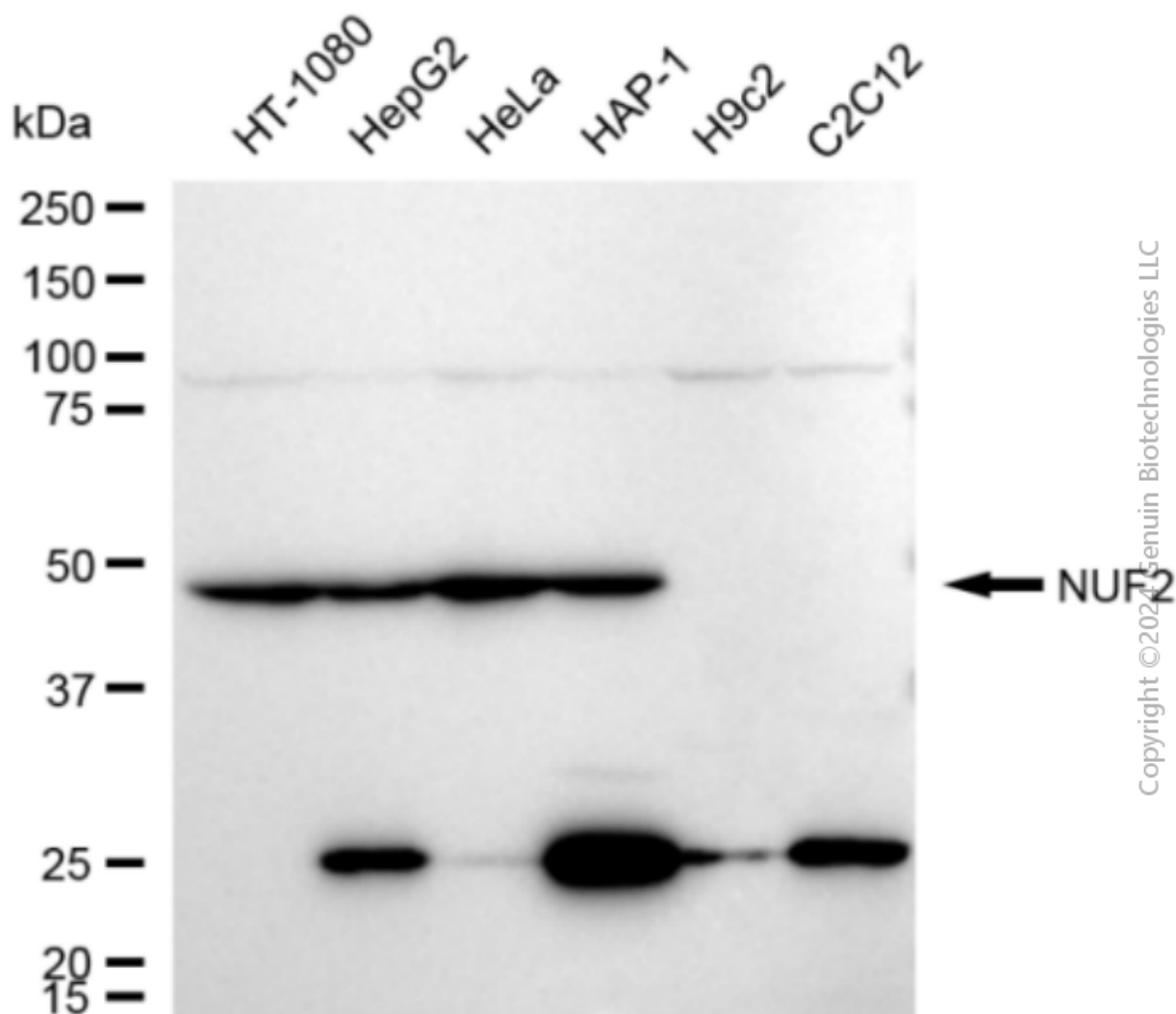
### SUPPORT

SUPPORT@GENUINBIOTECH.COM  
TEL: +1-540-855-7041

### ORDERS

SALES@GENUINBIOTECH.COM  
FAX: +1-540-855-7041

[WWW.GENUINBIOTECH.COM](http://WWW.GENUINBIOTECH.COM)



Western blotting analysis using anti-NUF2 antibody (Cat#2381). Total cell lysates (30 µg) from various cell lines were loaded and separated by SDS-PAGE. The blot was incubated with anti-NUF2 antibody (Cat#2381, 1:5,000) and HRP-conjugated goat anti-rabbit secondary antibody (Cat#201, 1:20,000) respectively. Image was developed using FeQ™ ECL Substrate Kit (Cat#226).