

Anti-Pyrimidinergic Receptor P2Y6 Recombinant Rabbit Monoclonal Antibody



Catalog #: 2385

Aliases

Pyrimidinergic Receptor P2Y6; P2Y6; Pyrimidinergic Receptor P2Y, G-Protein Coupled, 6; P2Y Purinoceptor 6; G-Coupled Nucleotide Receptor; P2 Purinoceptor; P2Y6 Receptor

Background

Gene Name: P2RY6

NCBI Gene Entry: [5031](#)

UniProt Entry: [Q15077](#)

Application Information

Molecular Weight: Predicted, 36 kDa; observed, 42 kDa

Clonality: Rabbit monoclonal antibody

Clone ID: 24GB590

Species Reactivity: Human

Applications Tested: Western blotting (WB), flow cytometry (FCM), immunocytochemistry (IC)

Immunogen

A synthesized peptide derived from human P2Y6

Isotype

Rabbit IgG

Storage Buffer

Supplied in PBS (pH 7.4) containing 50% glycerol, and 0.02% sodium azide.

Storage

Store at -20 °C for one year.

Recommended Dilutions

Western Blotting (WB): 1:1,000-1:5,000

Flow Cytometry (FCM): 1:2,000

Immunocytochemistry (IC): 1:100-1:1,000

Note: This product is for research use only.

Validation Data

SUPPORT

SUPPORT@GENUINBIOTECH.COM
TEL: +1-540-855-7041

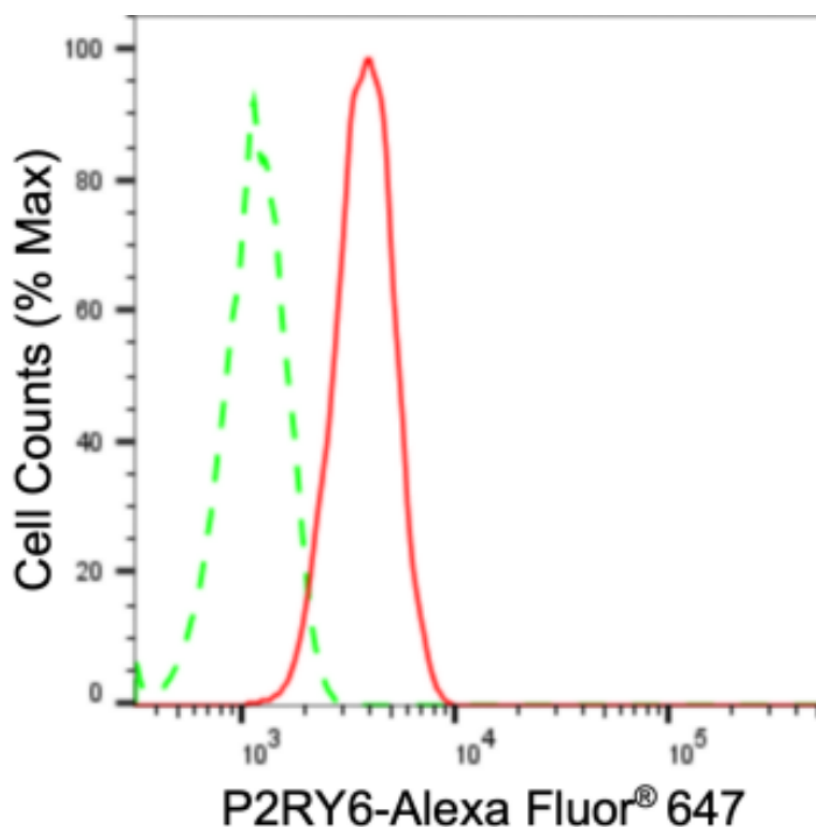
ORDERS

SALES@GENUINBIOTECH.COM
FAX: +1-540-855-7041

WWW.GENUINBIOTECH.COM

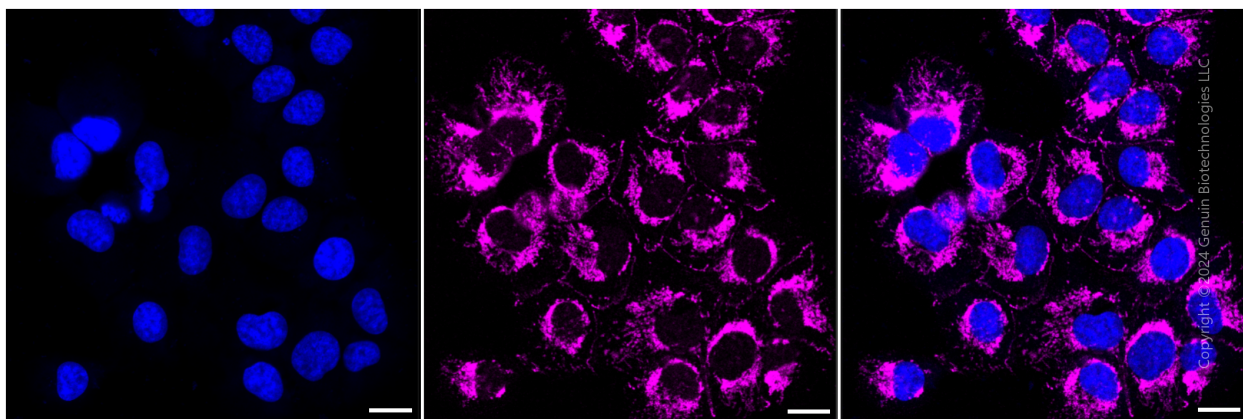
Anti-Pyrimidinergic Receptor P2Y6 Recombinant Rabbit Monoclonal Antibody

PAGE 2



Copyright ©2024 Genuin Biotechnologies LLC

Flow cytometric analysis of P2RY6 expression in HT-1080 cells using anti-P2RY6 antibody (Cat#2385, 1:2,000). Green, isotype control; red, P2RY6.



Copyright ©2024 Genuin Biotechnologies LLC

Immunocytochemical staining of HT-1080 cells with anti-P2RY6 antibody (Cat#2385, 1:1,000). Nuclei were stained blue with DAPI; P2RY6 was stained magenta with Alexa Fluor® 647. Images were taken using Leica stellaris 5. Protein abundance based on laser Intensity and smart gain: Medium. Scale bar: 20 μ m.

SUPPORT

SUPPORT@GENUINBIOTECH.COM
TEL: +1-540-855-7041

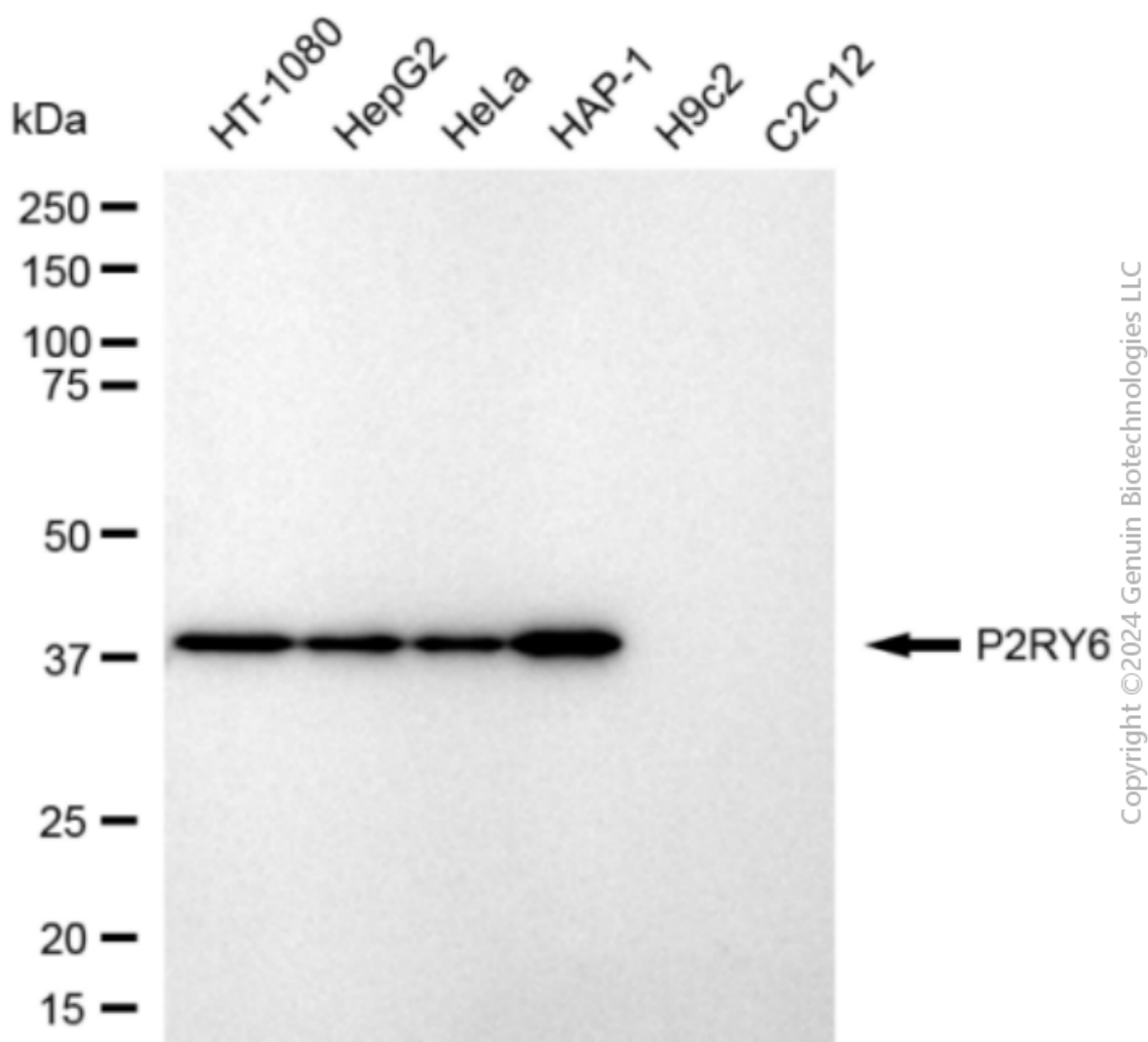
ORDERS

SALES@GENUINBIOTECH.COM
FAX: +1-540-855-7041

WWW.GENUINBIOTECH.COM

Anti-Pyrimidinergic Receptor P2Y6 Recombinant Rabbit Monoclonal Antibody

PAGE 3



Western blotting analysis using anti-P2RY6 antibody (Cat#2385). Total cell lysates (30 μ g) from various cell lines were loaded and separated by SDS-PAGE. The blot was incubated with anti-P2RY6 antibody (Cat#2385, 1:5,000) and HRP-conjugated goat anti-rabbit secondary antibody (Cat#201, 1:20,000) respectively. Image was developed using FeQ™ ECL Substrate Kit (Cat#226).

SUPPORT

SUPPORT@GENUINBIOTECH.COM
TEL: +1-540-855-7041

ORDERS

SALES@GENUINBIOTECH.COM
FAX: +1-540-855-7041

WWW.GENUINBIOTECH.COM