

# Anti-MAGE Family Member A1 Recombinant Rabbit Monoclonal Antibody



**Catalog #: 2386**

## Aliases

MAGE Family Member A1; CT1.1; Melanoma-Associated Antigen 1; MAGE1; Melanoma Antigen Family A, 1 (Directs Expression Of Antigen MZ2-E); Cancer/Testis Antigen Family 1, Member 1; Melanoma-Associated Antigen MZ2-E; Melanoma Antigen Family A 1; Melanoma Antigen Family A1; Cancer/Testis Antigen 1.1; Melanoma Antigen MAGE-1; MAGE-1 Antigen; Antigen MZ2-E; MGC9326; MAGE1A

## Background

Gene Name: MAGEA1

NCBI Gene Entry: [4100](#)

UniProt Entry: [P43355](#)

## Application Information

Molecular Weight: Predicted, 34 kDa; observed, 46 kDa

Clonality: Rabbit monoclonal antibody

Clone ID: 24GB595

Species Reactivity: Human, mouse, rat

Applications Tested: Western blotting (WB), flow cytometry (FCM), immunocytochemistry (IC)

## Immunogen

A synthesized peptide derived from human MAGE 1

## Isotype

Rabbit IgG

## Storage Buffer

Supplied in PBS (pH 7.4) containing 50% glycerol, and 0.02% sodium azide.

## Storage

Store at -20 °C for one year.

## Recommended Dilutions

Western Blotting (WB): 1:1,000-1:5,000

Flow Cytometry (FCM): 1:2,000

Immunocytochemistry (IC): 1:100-1:1,000

---

### SUPPORT

SUPPORT@GENUINBIOTECH.COM  
TEL: +1-540-855-7041

### ORDERS

SALES@GENUINBIOTECH.COM  
FAX: +1-540-855-7041

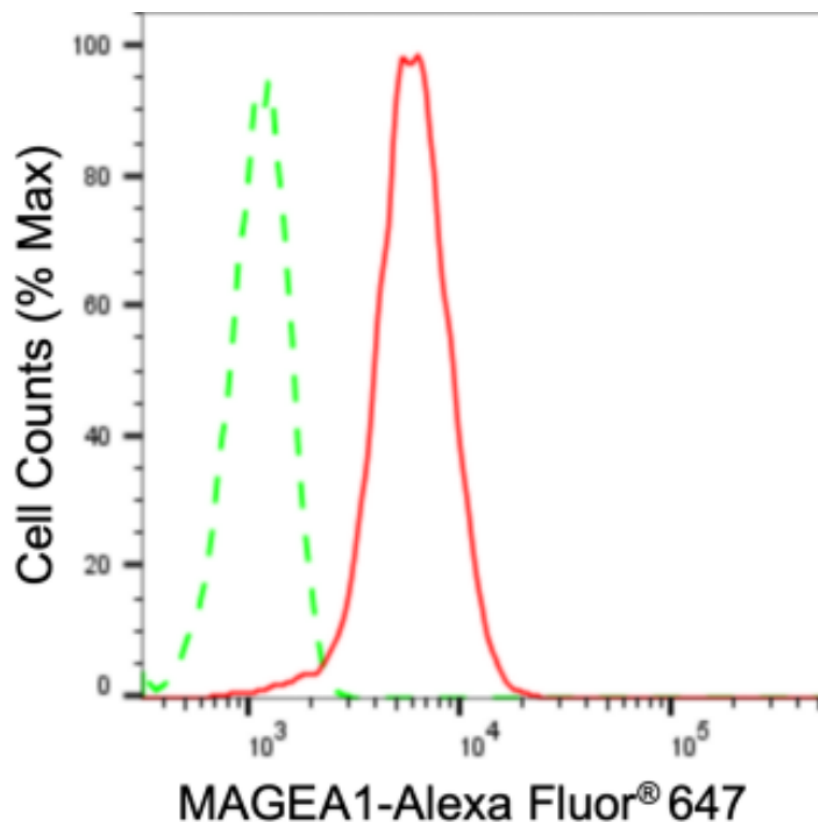
[WWW.GENUINBIOTECH.COM](http://WWW.GENUINBIOTECH.COM)

# Anti-MAGE Family Member A1 Recombinant Rabbit Monoclonal Antibody

PAGE 2

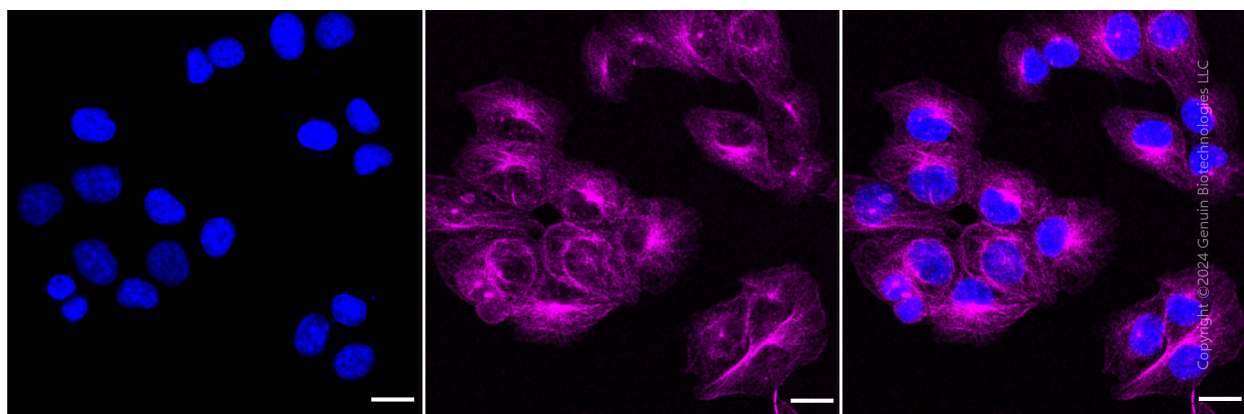
**Note:** This product is for research use only.

## Validation Data



Copyright ©2024 Genuin Biotechnologies LLC

Flow cytometric analysis of MAGEA1 expression in HT-1080 cells using MAGEA1 antibody (Cat#2386, 1:2,000). Green, isotype control; red, MAGEA1.



Copyright ©2024 Genuin Biotechnologies LLC

Immunocytochemical staining of HT-1080 cells with anti-MAGEA1 antibody (Cat#2386, 1:1,000). Nuclei were stained blue with DAPI; MAGEA1 was stained magenta with Alexa Fluor® 647. Images were taken using Leica stellaris 5. Protein abundance based on laser Intensity and smart gain: Medium. Scale bar: 20  $\mu$ m.

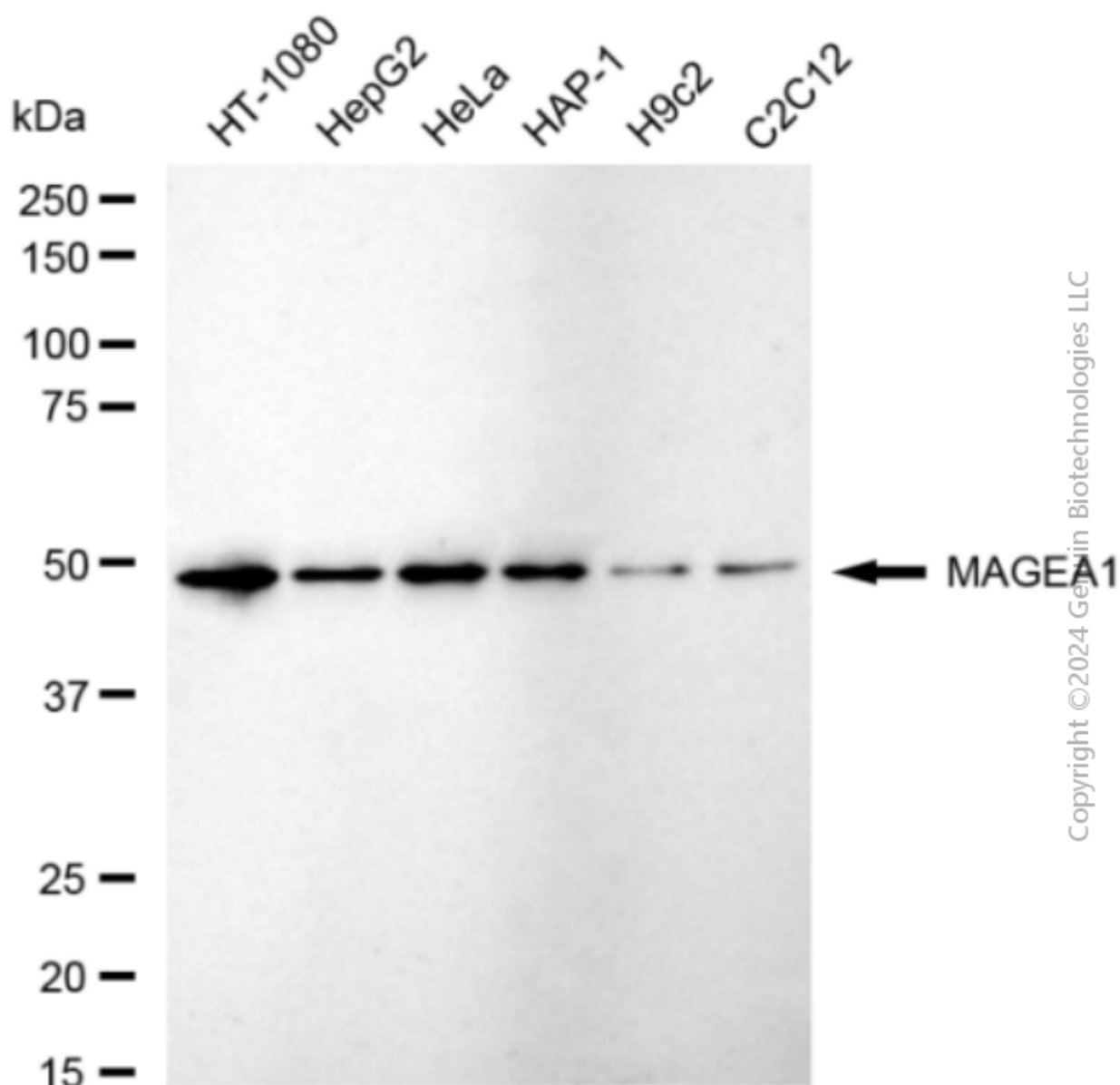
### SUPPORT

SUPPORT@GENUINBIOTECH.COM  
TEL: +1-540-855-7041

### ORDERS

SALES@GENUINBIOTECH.COM  
FAX: +1-540-855-7041

[WWW.GENUINBIOTECH.COM](http://WWW.GENUINBIOTECH.COM)



Western blotting analysis using anti-MAGEA1 antibody (Cat#2386). Total cell lysates (30  $\mu$ g) from various cell lines were loaded and separated by SDS-PAGE. The blot was incubated with anti-MAGEA1 antibody (Cat#2386, 1:5,000) and HRP-conjugated goat anti-rabbit secondary antibody (Cat#201, 1:20,000) respectively. Image was developed using FeQ™ ECL Substrate Kit (Cat#226).