

# Anti-PAF1 Recombinant Rabbit Monoclonal Antibody



**Catalog #: 2392**

## Aliases

PAF1 Homolog, Paf1/RNA Polymerase II Complex Component; PD2; F23149\_1; RNA Polymerase II-Associated Factor 1 Homolog; Pancreatic Differentiation Protein 2; FLJ11123; Paf1, RNA Polymerase II Associated Factor, Homolog (S. Cerevisiae); Paf1, RNA Polymerase II Associated Factor, Homolog; HPAF1

## Background

Gene Name: PAF1

NCBI Gene Entry: [54623](#)

UniProt Entry: [Q8N7H5](#)

## Application Information

Molecular Weight: Predicted, 60 kDa; observed, 80 kDa

Clonality: Rabbit monoclonal antibody

Clone ID: 24GB625

Species Reactivity: Human, mouse, rat

Applications Tested: Western blotting (WB), immunocytochemistry (IC)

## Immunogen

A synthesized peptide derived from human PAF1

## Isotype

Rabbit IgG

## Storage Buffer

Supplied in PBS (pH 7.4) containing 50% glycerol, and 0.02% sodium azide.

## Storage

Store at -20 °C for one year.

## Recommended Dilutions

Western Blotting (WB): 1:1,000-1:5,000

Immunocytochemistry (IC): 1:100-1:1,000

**Note:** This product is for research use only.

---

### SUPPORT

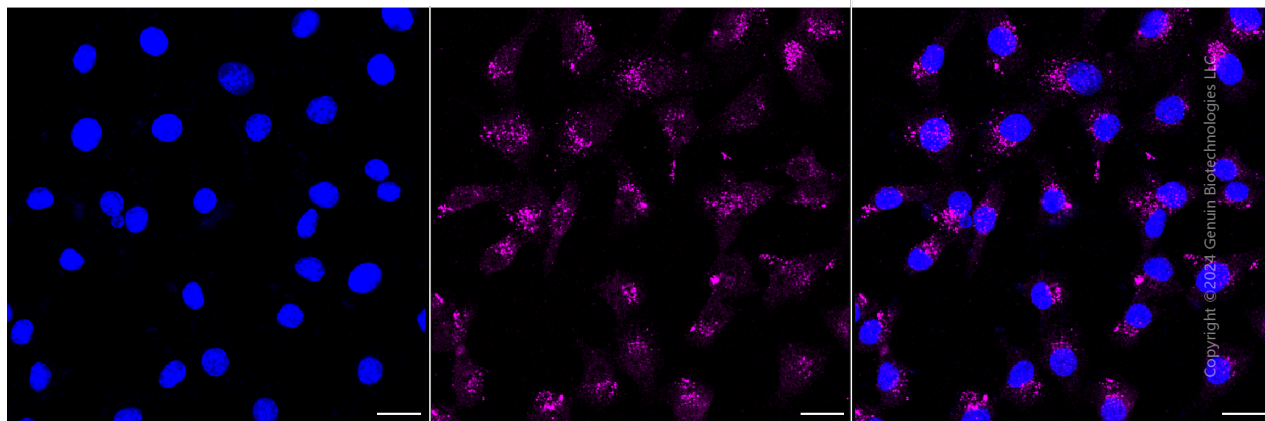
SUPPORT@GENUINBIOTECH.COM  
TEL: +1-540-855-7041

### ORDERS

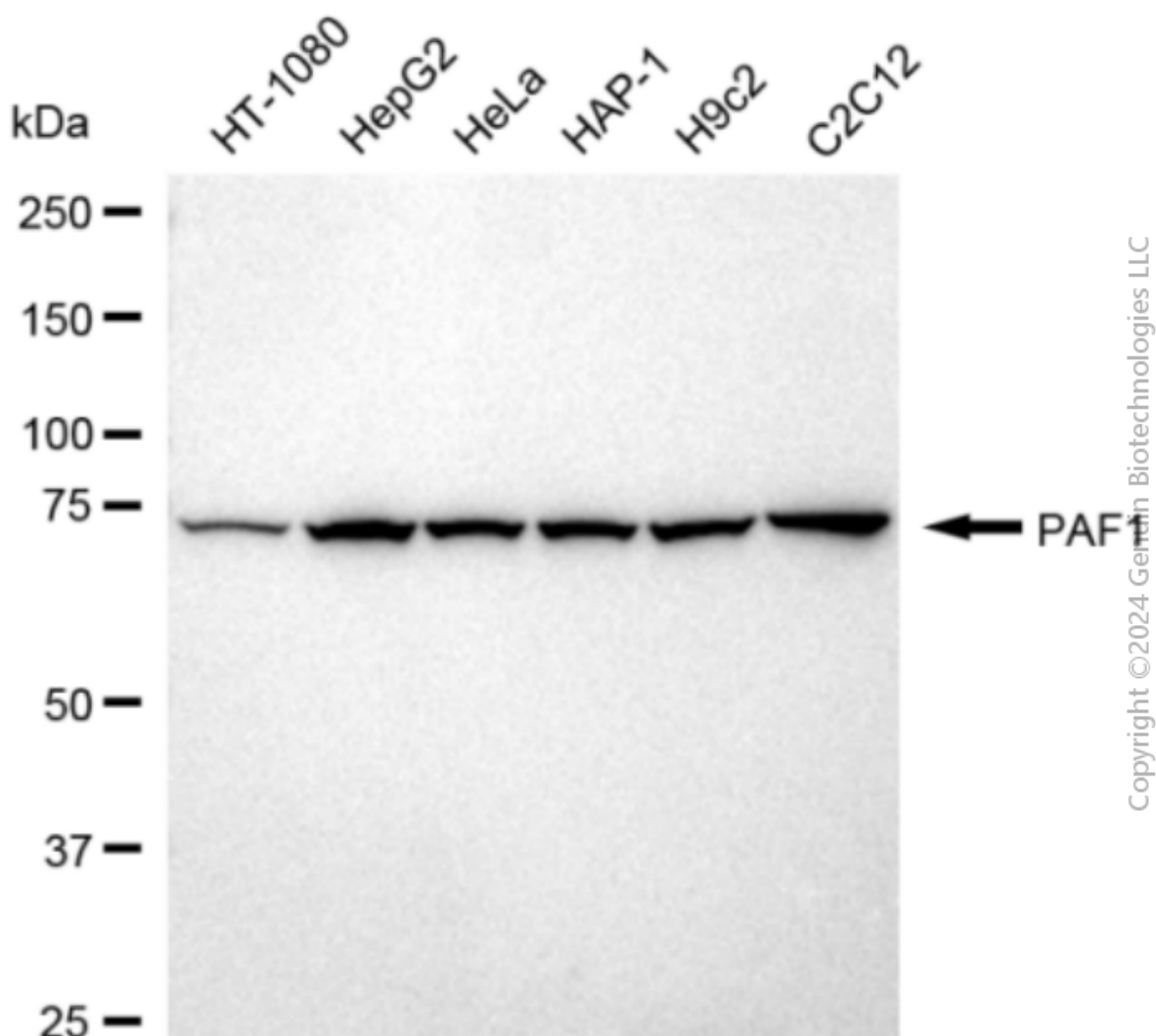
SALES@GENUINBIOTECH.COM  
FAX: +1-540-855-7041

[WWW.GENUINBIOTECH.COM](http://WWW.GENUINBIOTECH.COM)

## Validation Data



Immunocytochemical staining of C2C12 cells with anti-PAF1 antibody (Cat#2392, 1:1,000). Nuclei were stained blue with DAPI; PAF1 was stained magenta with Alexa Fluor® 647. Images were taken using Leica stellaris 5. Protein abundance based on laser Intensity and smart gain: Medium. Scale bar: 20  $\mu$ m.



Western blotting analysis using anti-PAF1 antibody (Cat#2392). Total cell lysates (30 µg) from various cell lines were loaded and separated by SDS-PAGE. The blot was incubated with anti-PAF1 antibody (Cat#2392, 1:5,000) and HRP-conjugated goat anti-rabbit secondary antibody (Cat#201, 1:20,000) respectively. Image was developed using FeQ™ ECL Substrate Kit (Cat#226).