

Anti-Pannexin 1 Recombinant Rabbit Monoclonal Antibody



Catalog #: 2393

Aliases

Pannexin 1; MRS1; UNQ2529; PX1; Pannexin-1; Innexin; OZEMA7; OOMD7

Background

Gene Name: PANX1

NCBI Gene Entry: [24145](#)

UniProt Entry: [Q96RD7](#)

Application Information

Molecular Weight: Predicted, 48 kDa; observed, 48 kDa

Clonality: Rabbit monoclonal antibody

Clone ID: 24GB630

Species Reactivity: Human, mouse, rat

Applications Tested: Western blotting (WB), flow cytometry (FCM), immunocytochemistry (IC)

Immunogen

A synthesized peptide derived from human Pannexin 1

Isotype

Rabbit IgG

Storage Buffer

Supplied in PBS (pH 7.4) containing 50% glycerol, and 0.02% sodium azide.

Storage

Store at -20 °C for one year.

Recommended Dilutions

Western Blotting (WB): 1:1,000-1:5,000

Flow Cytometry (FCM): 1:2,000

Immunocytochemistry (IC): 1:100-1:1,000

Note: This product is for research use only.

Validation Data

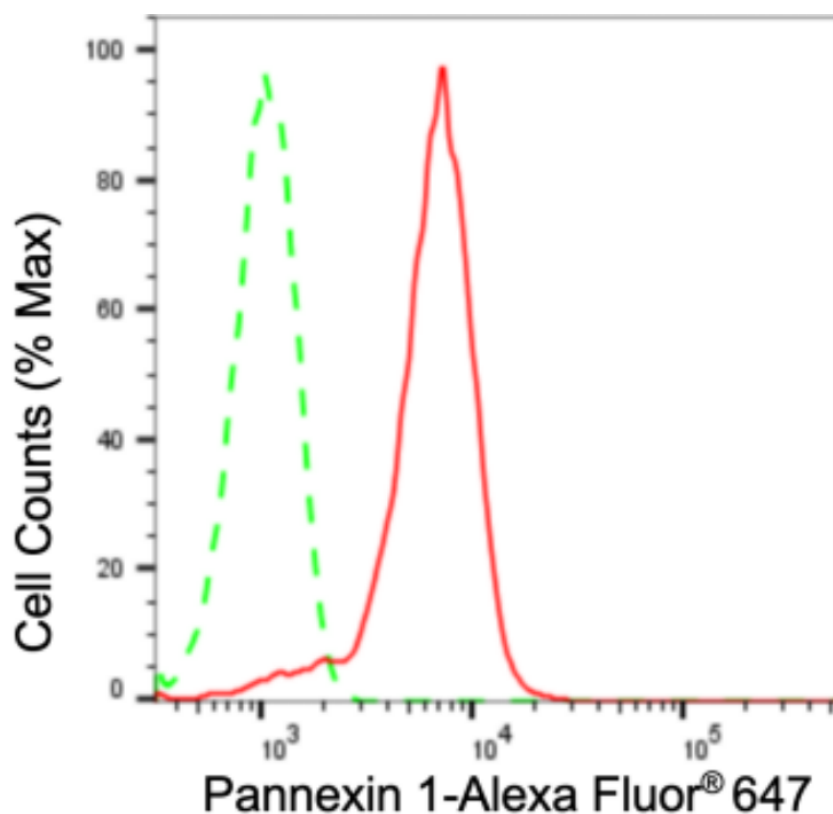
SUPPORT

SUPPORT@GENUINBIOTECH.COM
TEL: +1-540-855-7041

ORDERS

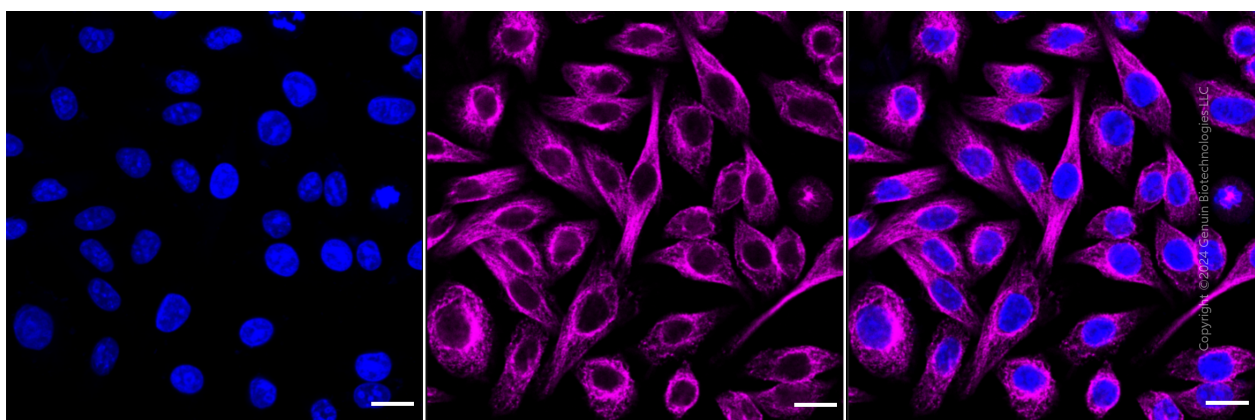
SALES@GENUINBIOTECH.COM
FAX: +1-540-855-7041

WWW.GENUINBIOTECH.COM

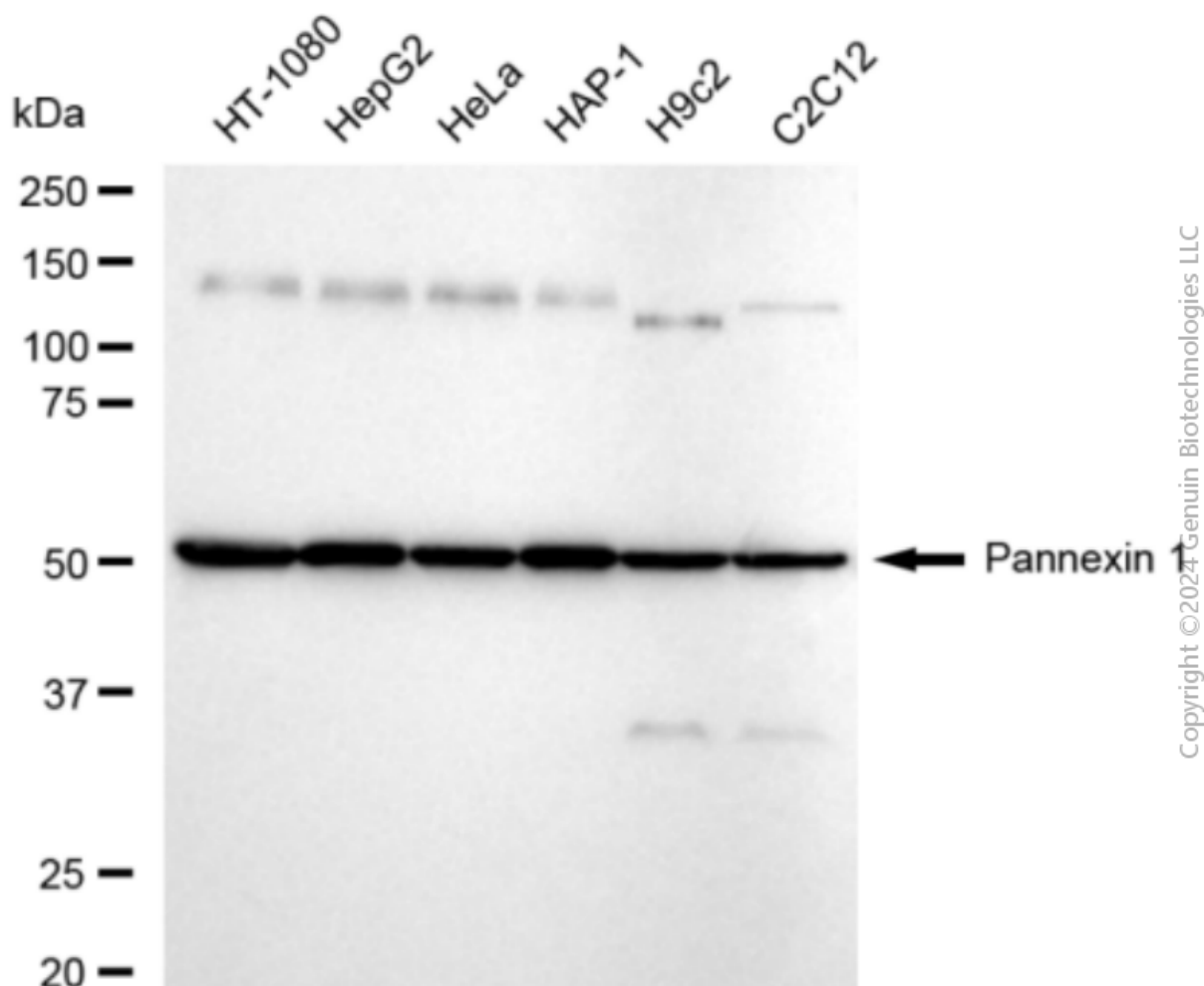


Copyright © 2024 Genuin Biotechnologies LLC

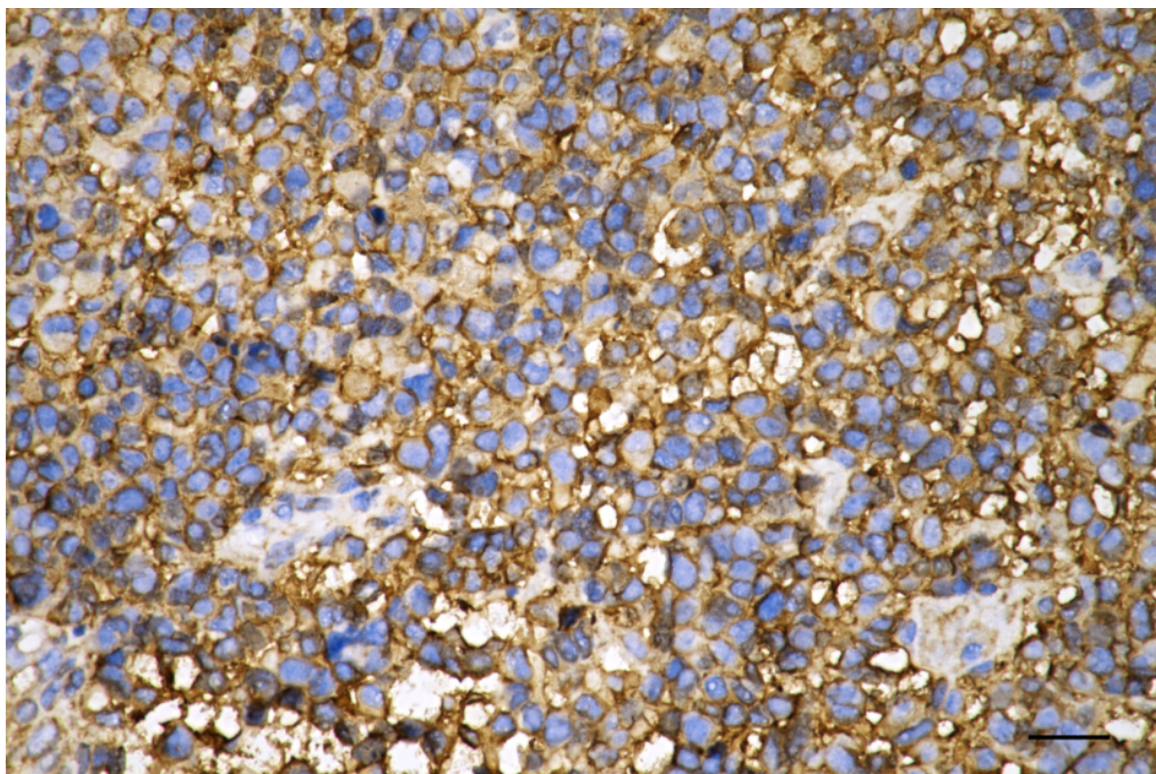
Flow cytometric analysis of Pannexin 1 expression in HepG2 cells using Pannexin 1 antibody (Cat#2393, 1:2,000). Green, isotype control; red, Pannexin 1.



Immunocytochemical staining of HepG2 cells with anti-Pannexin 1 antibody (Cat#2393, 1:1,000). Nuclei were stained blue with DAPI; Pannexin 1 was stained magenta with Alexa Fluor® 647. Images were taken using Leica stellaris 5. Protein abundance based on laser Intensity and smart gain: Medium. Scale bar: 20 μ m.

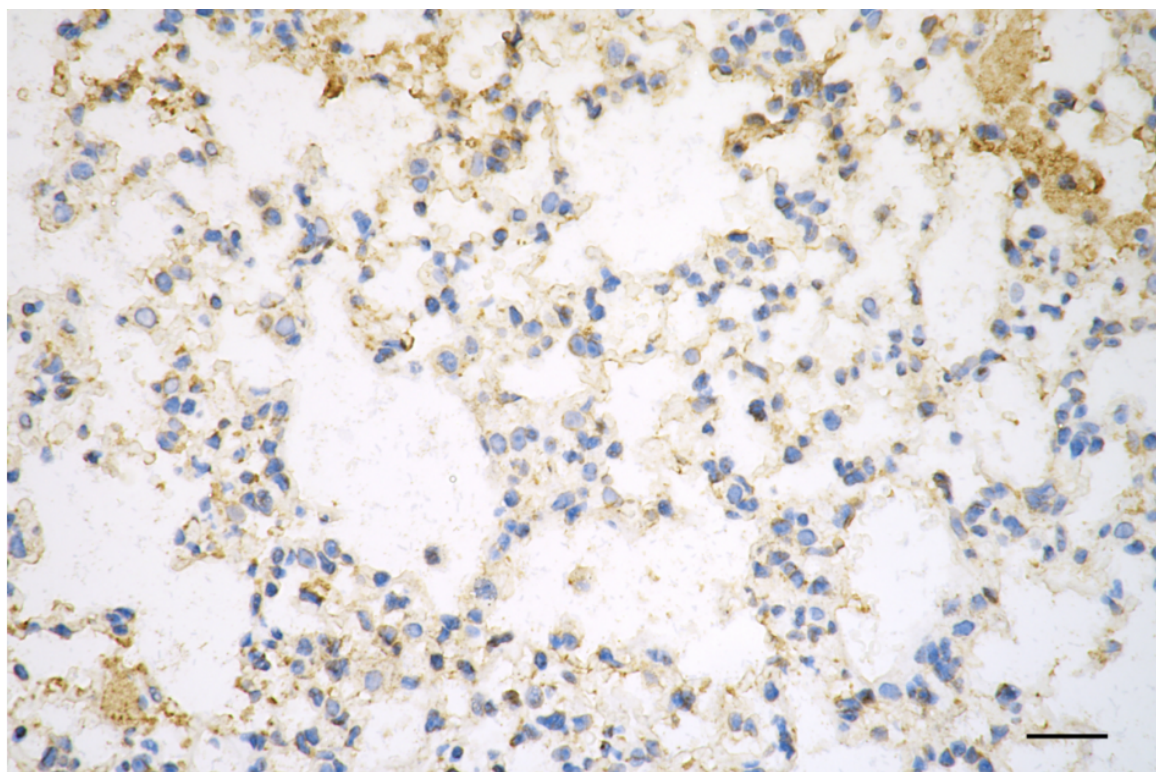


Western blotting analysis using anti-Pannexin 1 antibody (Cat#2393). Total cell lysates (30 µg) from various cell lines were loaded and separated by SDS-PAGE. The blot was incubated with anti-Pannexin 1 antibody (Cat#2393, 1:5,000) and HRP-conjugated goat anti-rabbit secondary antibody (Cat#201, 1:20,000) respectively. Image was developed using FeQ™ ECL Substrate Kit (Cat#226).



Copyright ©2025 Genuin Biotechnologies LLC

Immunohistochemistry was performed on paraffin-embedded human glioblastoma using anti-pannexin 1 antibody (Cat#2393, 1:200). Antigen retrieval was done in sodium citrate buffer (pH 6.0). DAB was used for detection, with hematoxylin counterstaining. Images were acquired using a Nikon Ci-L Plus microscope (40× objective). Scale bar: 25 μ m.

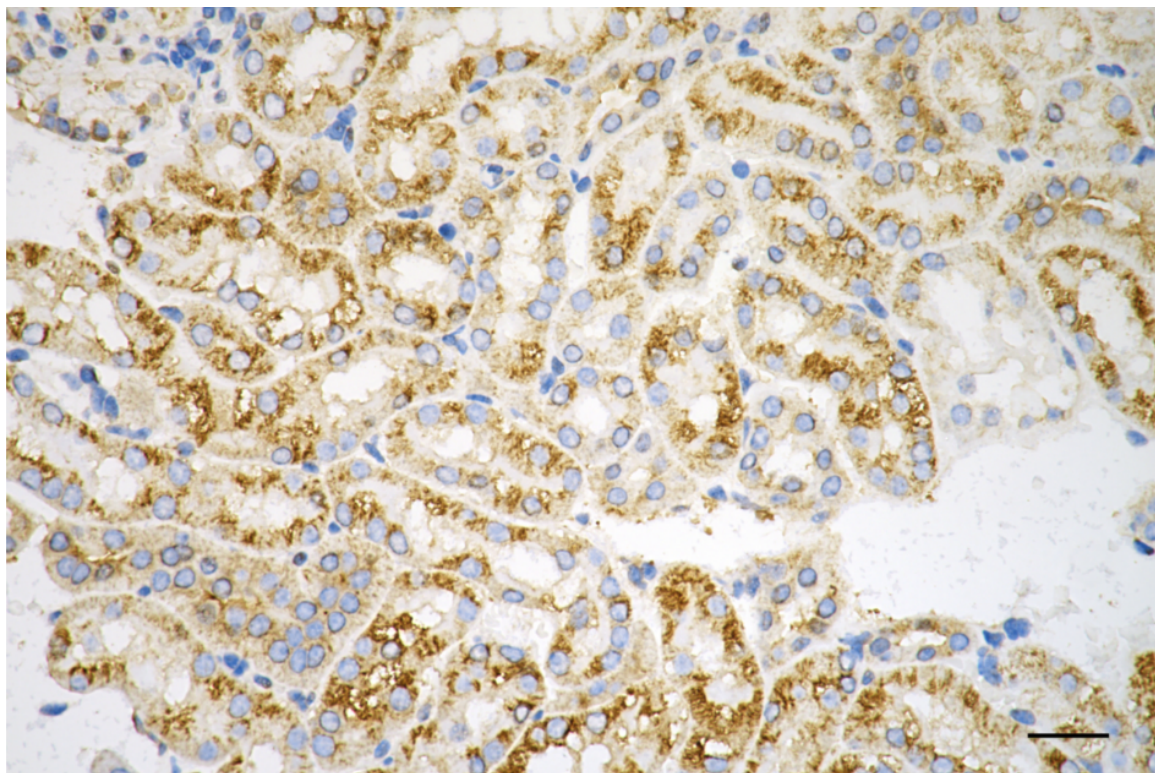


Copyright ©2025 Genuin Biotechnologies LLC

Anti-Pannexin 1 Recombinant Rabbit Monoclonal Antibody

PAGE 5

Immunohistochemistry was performed on paraffin-embedded mouse kidney using anti-pannexin 1 antibody (Cat#2393, 1:200). Antigen retrieval was done in sodium citrate buffer (pH 6.0). DAB was used for detection, with hematoxylin counterstaining. Images were acquired using a Nikon Ci-L Plus microscope (40× objective). Scale bar: 25 μ m.



Copyright ©2025 Genuin Biotechnologies LLC

Immunohistochemistry was performed on paraffin-embedded mouse lung using anti-pannexin 1 antibody (Cat#2393, 1:200). Antigen retrieval was done in sodium citrate buffer (pH 6.0). DAB was used for detection, with hematoxylin counterstaining. Images were acquired using a Nikon Ci-L Plus microscope (40× objective). Scale bar: 25 μ m.

SUPPORT

SUPPORT@GENUINBIOTECH.COM
TEL: +1-540-855-7041

ORDERS

SALES@GENUINBIOTECH.COM
FAX: +1-540-855-7041

WWW.GENUINBIOTECH.COM