

Anti-Macrophage Stimulating 1 Recombinant Rabbit Monoclonal Antibody



Catalog #: 2394

Aliases

Macrophage Stimulating 1; MSP; D3F15S2; DNF15S2; NF15S2; HGFL; Hepatocyte Growth Factor-Like Protein; Macrophage-Stimulating Protein; Macrophage Stimulating 1 (Hepatocyte Growth Factor-Like); Hepatocyte Growth Factor-Like Protein Homolog; Macrophage Stimulatory Protein; Hepatocyte Growth Factor-Like; EC 3.4.21

Background

Gene Name: MST1

NCBI Gene Entry: [4485](#)

UniProt Entry: [P26927](#)

Application Information

Molecular Weight: Predicted, 80 kDa; observed, 85 kDa

Clonality: Rabbit monoclonal antibody

Clone ID: 24GB635

Species Reactivity: Human, mouse, rat

Applications Tested: Western blotting (WB), flow cytometry (FCM), immunocytochemistry (IC)

Immunogen

A synthesized peptide derived from human MST1

Isotype

Rabbit IgG

Storage Buffer

Supplied in PBS (pH 7.4) containing 50% glycerol, and 0.02% sodium azide.

Storage

Store at -20 °C for one year.

Recommended Dilutions

Western Blotting (WB): 1:1,000-1:5,000

Flow Cytometry (FCM): 1:2,000

Immunocytochemistry (IC): 1:100-1:1,000

SUPPORT

SUPPORT@GENUINBIOTECH.COM
TEL: +1-540-855-7041

ORDERS

SALES@GENUINBIOTECH.COM
FAX: +1-540-855-7041

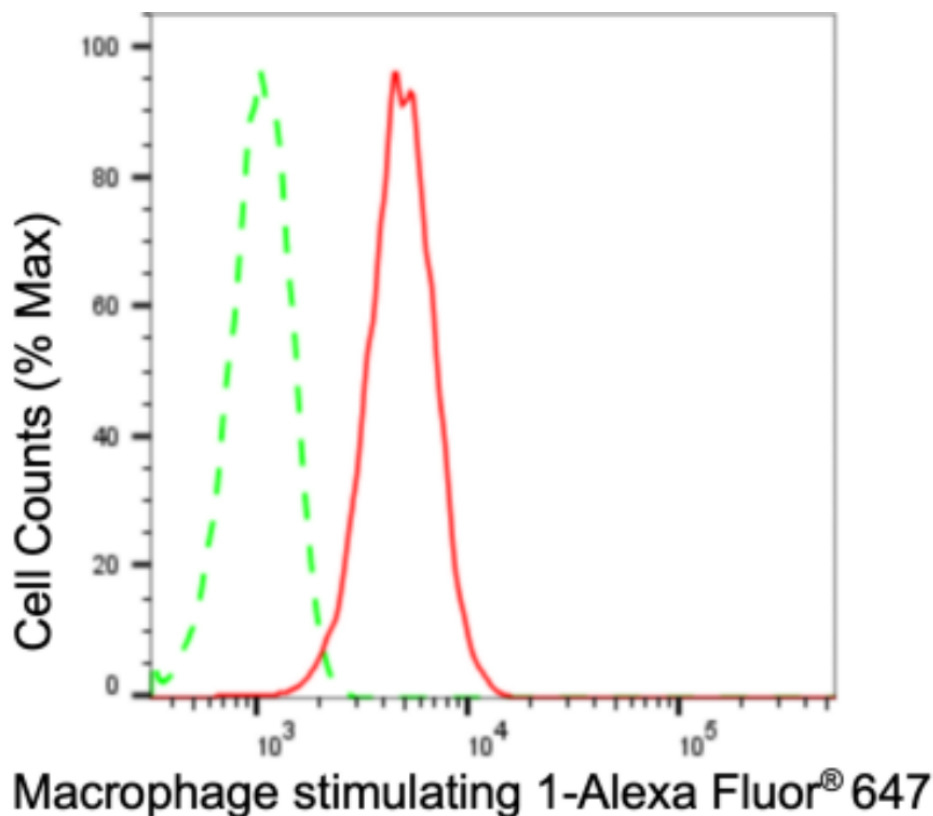
WWW.GENUINBIOTECH.COM

Anti-Macrophage Stimulating 1 Recombinant Rabbit Monoclonal Antibody

PAGE 2

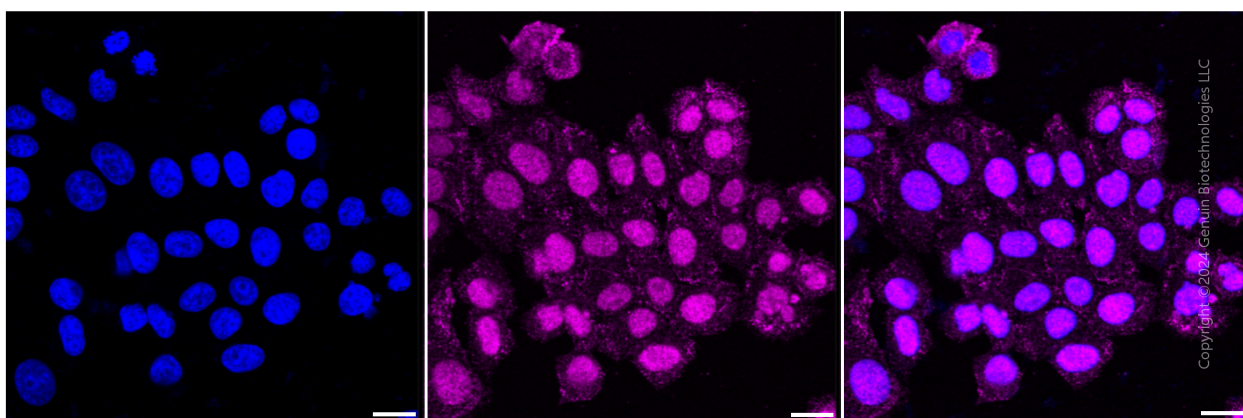
Note: This product is for research use only.

Validation Data



Copyright ©2024 Genuin Biotechnologies LLC

Flow cytometric analysis of Macrophage stimulating 1 expression in HepG2 cells using Macrophage stimulating 1 antibody (Cat#2394, 1:2,000). Green, isotype control; red, Macrophage stimulating 1.



Immunocytochemical staining of HepG2 cells with anti-Macrophage stimulating 1 antibody (Cat#2394, 1:1,000). Nuclei were stained blue with DAPI; Macrophage stimulating 1 was stained magenta with Alexa Fluor® 647. Images were taken using Leica stellaris 5. Protein abundance based on laser Intensity and smart gain: High. Scale bar: 20 µm.

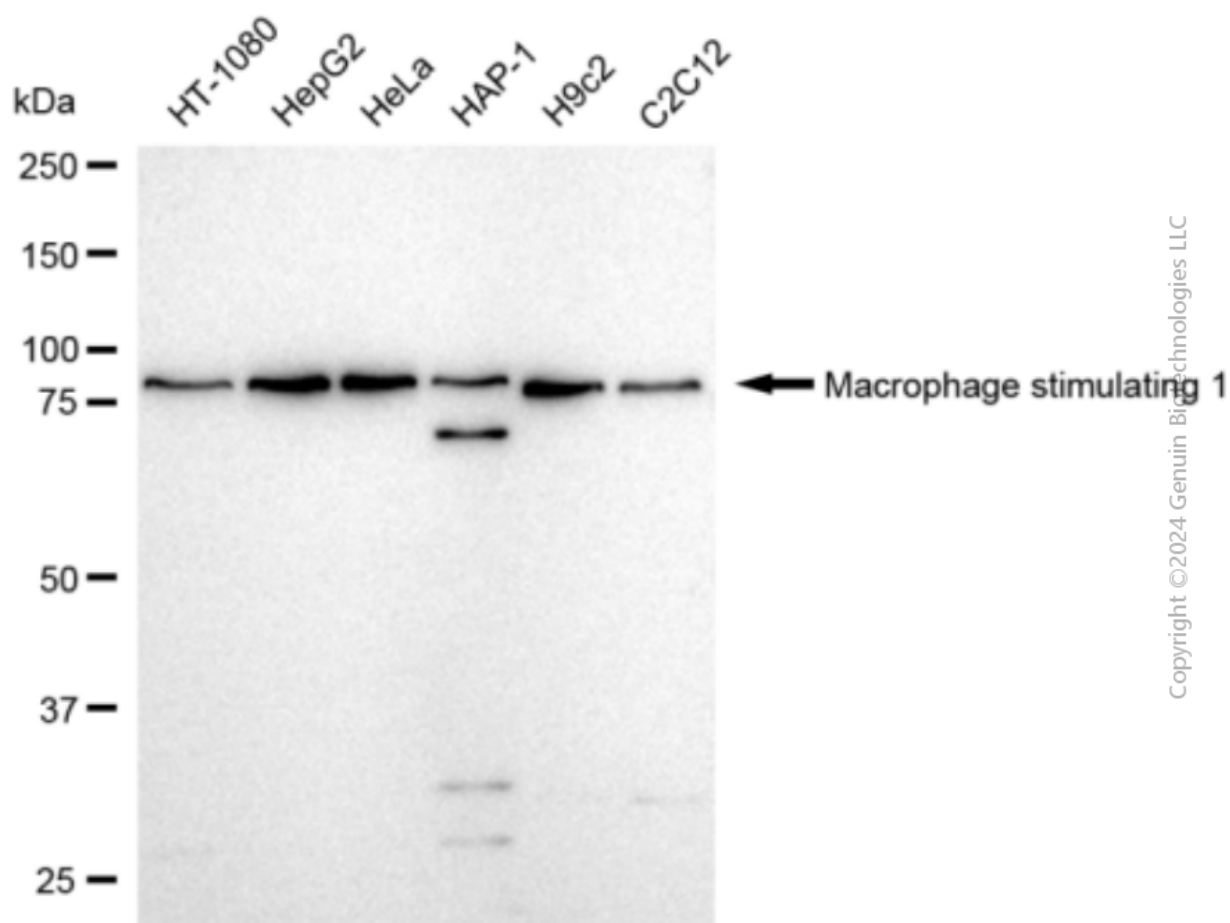
SUPPORT

SUPPORT@GENUINBIOTECH.COM
TEL: +1-540-855-7041

ORDERS

SALES@GENUINBIOTECH.COM
FAX: +1-540-855-7041

WWW.GENUINBIOTECH.COM



Western blotting analysis using anti-Macrophage stimulating 1 antibody (Cat#2394). Total cell lysates (30 μ g) from various cell lines were loaded and separated by SDS-PAGE. The blot was incubated with anti-Macrophage stimulating 1 antibody (Cat#2394, 1:5,000) and HRP-conjugated goat anti-rabbit secondary antibody (Cat#201, 1:20,000) respectively. Image was developed using FeQ™ ECL Substrate Kit (Cat#226).