

Anti-MICA Recombinant Rabbit Monoclonal Antibody



Catalog #: 2396

Aliases

MHC Class I Polypeptide-Related Sequence A; PERB11.1; MIC-A; Major Histocompatibility Complex Class I Chain-Related Protein A; MHC Class I Chain-Related Protein A; Stress Inducible Class I Homolog; MHC Class I Related Sequence A; MHC Class I Related Chain A; HLA Class I Antigen

Background

Gene Name: MICA

NCBI Gene Entry: [100507436](#)

UniProt Entry: [Q29983](#)

Application Information

Molecular Weight: Predicted, 43 kDa; observed, 42-70 kDa

Clonality: Rabbit monoclonal antibody

Clone ID: 24GB645

Species Reactivity: Human

Applications Tested: Western blotting (WB), immunocytochemistry (IC)

Immunogen

A synthesized peptide derived from human MICA

Isotype

Rabbit IgG

Storage Buffer

Supplied in PBS (pH 7.4) containing 50% glycerol, and 0.02% sodium azide.

Storage

Store at -20 °C for one year.

Recommended Dilutions

Western Blotting (WB): 1:1,000-1:5,000

Immunocytochemistry (IC): 1:100-1:1,000

Note: This product is for research use only.

SUPPORT

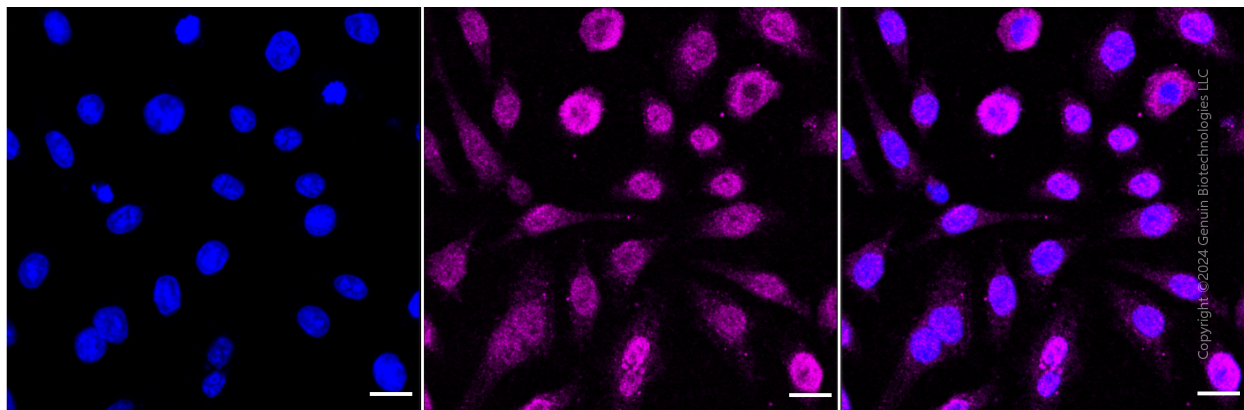
SUPPORT@GENUINBIOTECH.COM
TEL: +1-540-855-7041

ORDERS

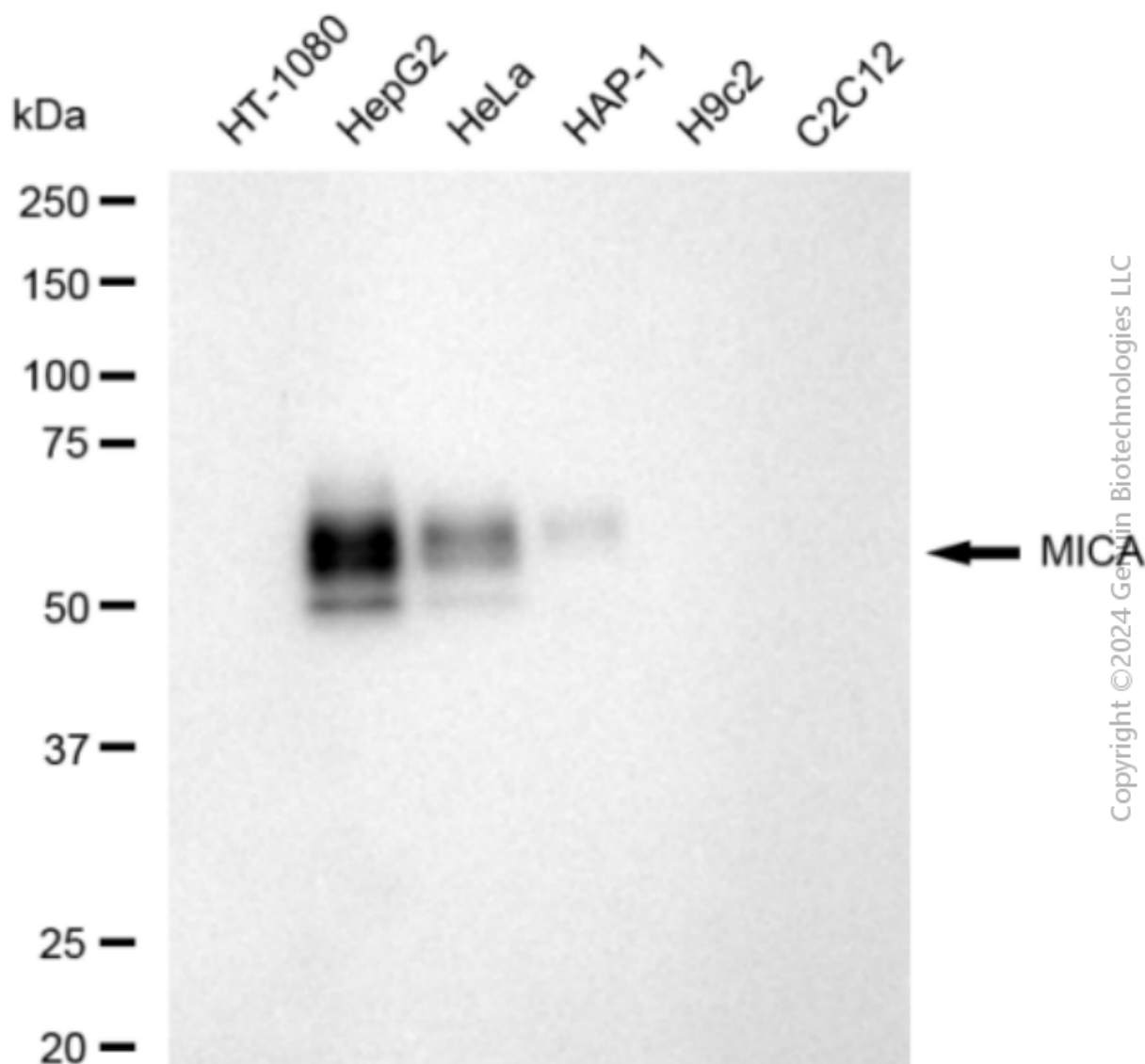
SALES@GENUINBIOTECH.COM
FAX: +1-540-855-7041

WWW.GENUINBIOTECH.COM

Validation Data



Immunocytochemical staining of HepG2 cells with anti-MICA antibody (Cat#2396, 1:1,000). Nuclei were stained blue with DAPI; MICA was stained magenta with Alexa Fluor® 647. Images were taken using Leica stellaris 5. Protein abundance based on laser Intensity and smart gain: Medium. Scale bar: 20 μ m.



Western blotting analysis using anti-MICA antibody (Cat#2396). Total cell lysates (30 µg) from various cell lines were loaded and separated by SDS-PAGE. The blot was incubated with anti-MICA antibody (Cat#2396, 1:5,000) and HRP-conjugated goat anti-rabbit secondary antibody (Cat#201, 1:20,000) respectively. Image was developed using FeQ™ ECL Substrate Kit (Cat#226).