

# Anti-Nuclear RNA Export Factor 1 Recombinant Rabbit Monoclonal Antibody



**Catalog #: 2401**

## Aliases

Nuclear RNA Export Factor 1; TAP; Mex67; Tip Associating Protein; MRNA Export Factor TAP; Tip-Associated Protein; DKFZp667O0311; Tip-Associating Protein

## Background

Gene Name: NXF1

NCBI Gene Entry: [10482](#)

UniProt Entry: [Q9UBU9](#)

## Application Information

Molecular Weight: Predicted, 70 kDa; observed, 70 kDa

Clonality: Rabbit monoclonal antibody

Clone ID: 24GB670

Species Reactivity: Human

Applications Tested: Western blotting (WB), flow cytometry (FCM), immunocytochemistry (IC)

## Immunogen

A synthesized peptide derived from human NXF1

## Isotype

Rabbit IgG

## Storage Buffer

Supplied in PBS (pH 7.4) containing 50% glycerol, and 0.02% sodium azide.

## Storage

Store at -20 °C for one year.

## Recommended Dilutions

Western Blotting (WB): 1:1,000-1:5,000

Flow Cytometry (FCM): 1:2,000

Immunocytochemistry (IC): 1:100-1:1,000

**Note:** This product is for research use only.

## Validation Data

---

### SUPPORT

SUPPORT@GENUINBIOTECH.COM  
TEL: +1-540-855-7041

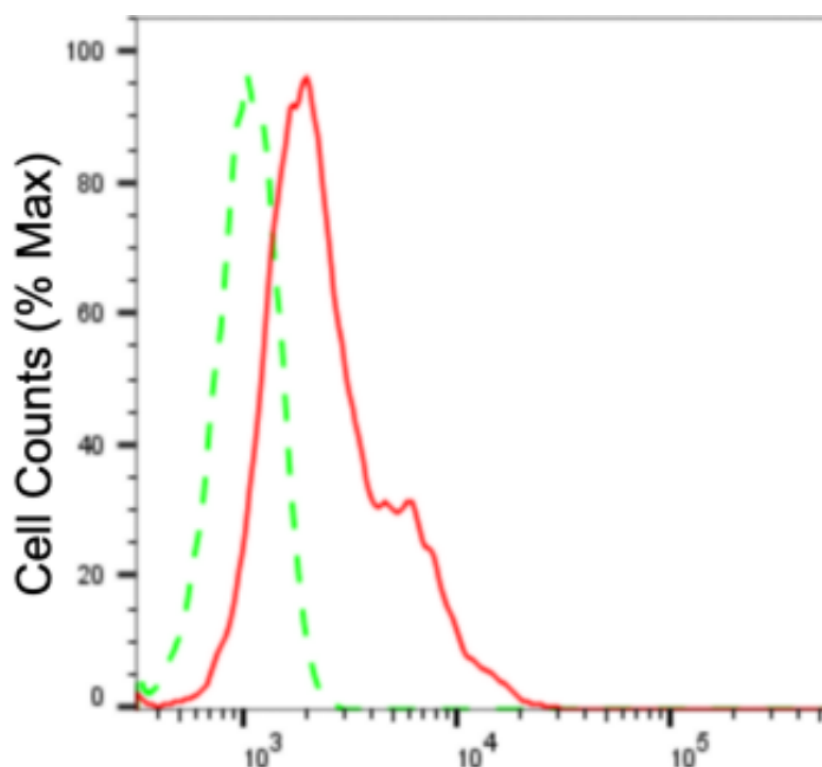
### ORDERS

SALES@GENUINBIOTECH.COM  
FAX: +1-540-855-7041

[WWW.GENUINBIOTECH.COM](http://WWW.GENUINBIOTECH.COM)

## Anti-Nuclear RNA Export Factor 1 Recombinant Rabbit Monoclonal Antibody

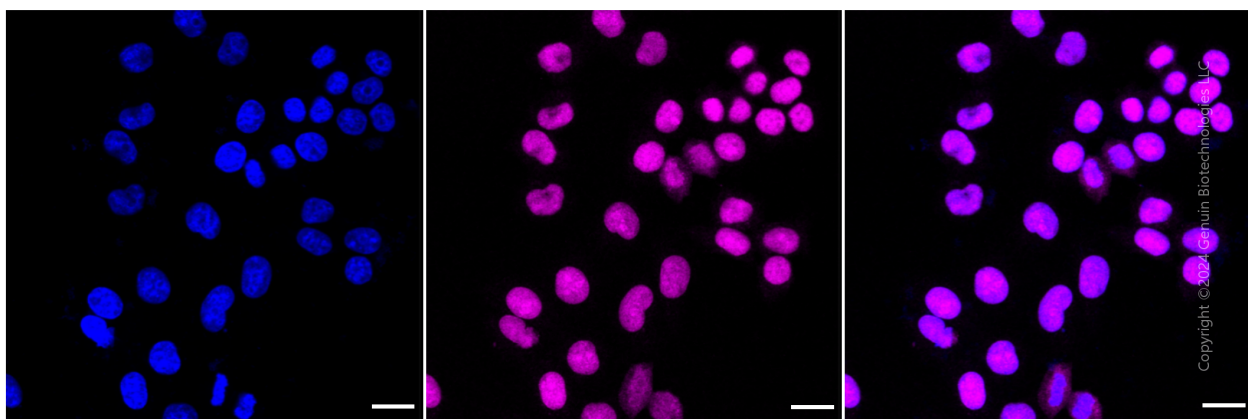
PAGE 2



Copyright © 2024 Genuin Biotechnologies LLC

### Nuclear RNA export factor 1-Alexa Fluor® 647

Flow cytometric analysis of Nuclear RNA export factor 1 expression in HepG2 cells using Nuclear RNA export factor 1 antibody (Cat#2401, 1:2,000). Green, isotype control; red, Nuclear RNA export factor 1.



Copyright © 2024 Genuin Biotechnologies LLC

Immunocytochemical staining of HepG2 cells with anti-Nuclear RNA export factor 1 antibody (Cat#2401, 1:1,000). Nuclei were stained blue with DAPI; Nuclear RNA export factor 1 was stained magenta with Alexa Fluor® 647. Images were taken using Leica stellaris 5. Protein abundance based on laser Intensity and smart gain: High. Scale bar: 20  $\mu$ m.

#### SUPPORT

SUPPORT@GENUINBIOTECH.COM  
TEL: +1-540-855-7041

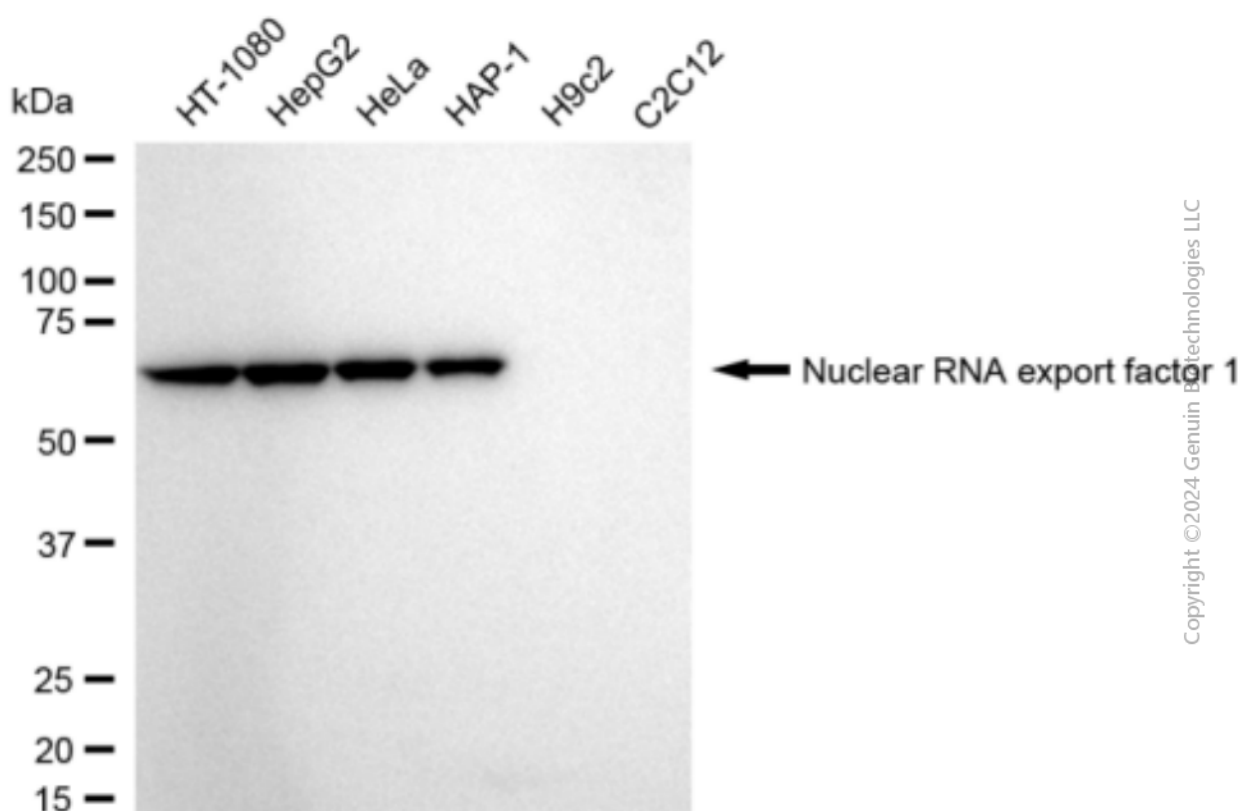
#### ORDERS

SALES@GENUINBIOTECH.COM  
FAX: +1-540-855-7041

WWW.GENUINBIOTECH.COM

## Anti-Nuclear RNA Export Factor 1 Recombinant Rabbit Monoclonal Antibody

PAGE 3



Copyright © 2024 Genuin Biotechnologies LLC

Western blotting analysis using anti-Nuclear RNA export factor 1 antibody (Cat# 2401). Total cell lysates (30 µg) from various cell lines were loaded and separated by SDS-PAGE. The blot was incubated with anti-Nuclear RNA export factor 1 antibody (Cat# 2401, 1:5,000) and HRP-conjugated goat anti-rabbit secondary antibody (Cat#201, 1:20,000) respectively. Image was developed using FeQ™ ECL Substrate Kit (Cat#226).

### SUPPORT

SUPPORT@GENUINBIOTECH.COM  
TEL: +1-540-855-7041

### ORDERS

SALES@GENUINBIOTECH.COM  
FAX: +1-540-855-7041

[WWW.GENUINBIOTECH.COM](http://WWW.GENUINBIOTECH.COM)