

Anti-Mitotic Arrest Deficient 2 Like 1 Recombinant Rabbit Monoclonal Antibody



Catalog #: 2405

Aliases

Mitotic Arrest Deficient 2 Like 1; MAD2; HSMAD2; MAD2 (Mitotic Arrest Deficient, Yeast, Homolog)-Like 1; Mitotic Spindle Assembly Checkpoint Protein MAD2A; Mitotic Arrest Deficient 2-Like Protein 1; MAD2-Like Protein 1; Mitotic Arrest Deficient, Yeast, Homolog-Like 1; MAD2 Mitotic Arrest Deficient-Like 1; HsMAD2

Background

Gene Name: MAD2L1

NCBI Gene Entry: [4085](#)

UniProt Entry: [Q13257](#)

Application Information

Molecular Weight: Predicted, 24 kDa; observed, 24 kDa

Clonality: Rabbit monoclonal antibody

Clone ID: 24GB690

Species Reactivity: Human

Applications Tested: Western blotting (WB), immunocytochemistry (IC)

Immunogen

A synthesized peptide derived from human Mad2L1

Isotype

Rabbit IgG

Storage Buffer

Supplied in PBS (pH 7.4) containing 50% glycerol, and 0.02% sodium azide.

Storage

Store at -20 °C for one year.

Recommended Dilutions

Western Blotting (WB): 1:1,000-1:5,000

Immunocytochemistry (IC): 1:100-1:1,000

Note: This product is for research use only.

SUPPORT

SUPPORT@GENUINBIOTECH.COM
TEL: +1-540-855-7041

ORDERS

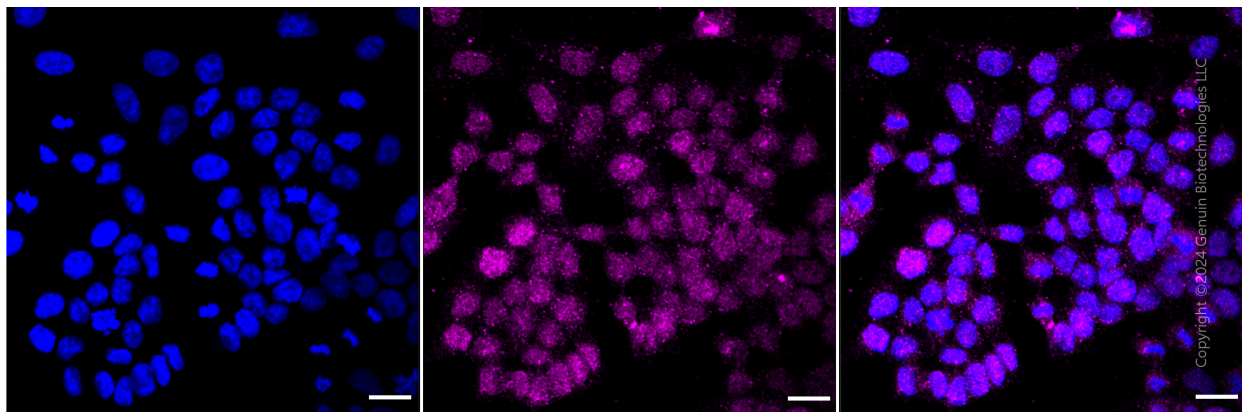
SALES@GENUINBIOTECH.COM
FAX: +1-540-855-7041

WWW.GENUINBIOTECH.COM

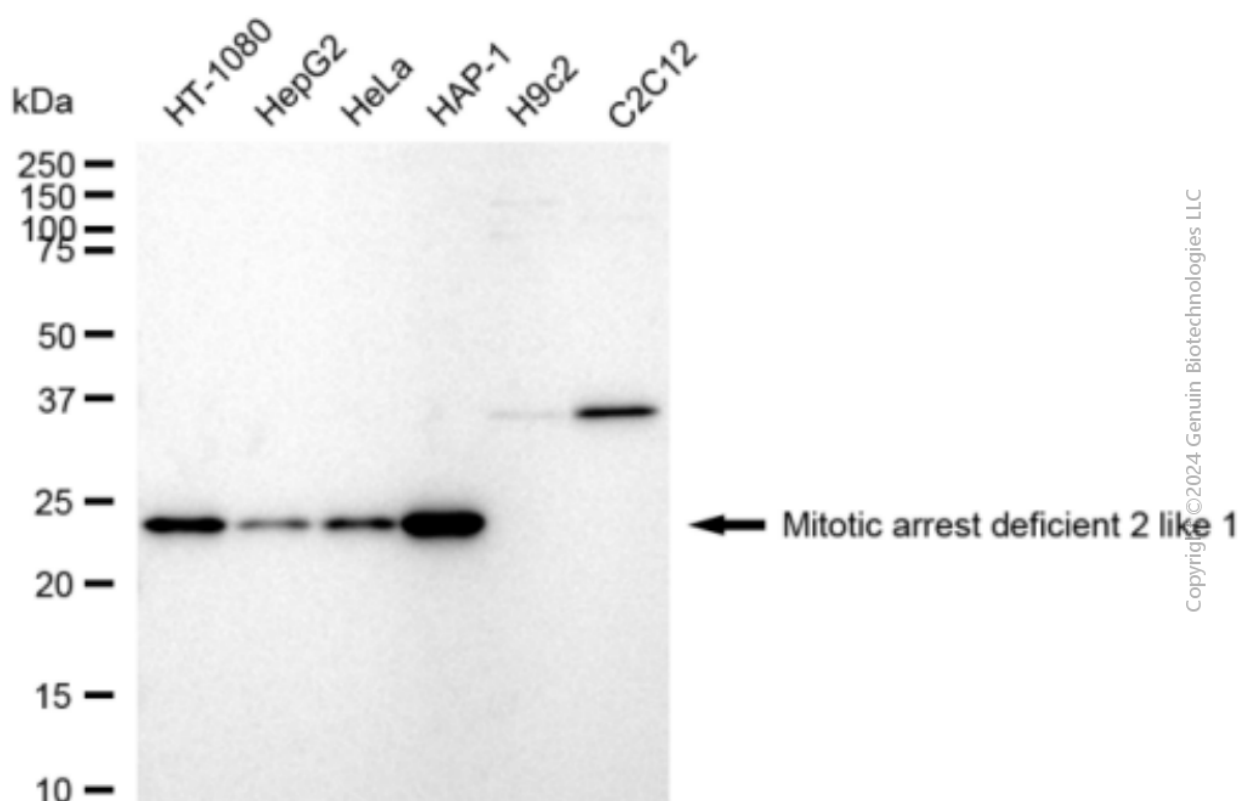
Anti-Mitotic Arrest Deficient 2 Like 1 Recombinant Rabbit Monoclonal Antibody

PAGE 2

Validation Data



Immunocytochemical staining of HAP-1 cells with anti-Mitotic arrest deficient 2 like 1 antibody (Cat#2405, 1:1,000). Nuclei were stained blue with DAPI; Mitotic arrest deficient 2 like 1 was stained magenta with Alexa Fluor® 647. Images were taken using Leica stellaris 5. Protein abundance based on laser Intensity and smart gain:Medium . Scale bar: 20 μ m.



Western blotting analysis using anti-Mitotic arrest deficient 2 like 1 antibody (Cat#2405). Total cell lysates (30 μ g) from various cell lines were loaded and separated by SDS-PAGE. The blot was incubated with anti-Mitotic arrest deficient 2 like 1 antibody (Cat#2405, 1:5,000) and HRP-conjugated goat anti-rabbit secondary antibody (Cat#201, 1:20,000) respectively. Image was

SUPPORT

SUPPORT@GENUINBIOTECH.COM
TEL: +1-540-855-7041

ORDERS

SALES@GENUINBIOTECH.COM
FAX: +1-540-855-7041

WWW.GENUINBIOTECH.COM

Anti-Mitotic Arrest Deficient 2 Like 1 Recombinant Rabbit Monoclonal Antibody

PAGE 3

developed using FeQ™ ECL Substrate Kit (Cat#226).

SUPPORT

SUPPORT@GENUINBIOTECH.COM
TEL: +1-540-855-7041

ORDERS

SALES@GENUINBIOTECH.COM
FAX: +1-540-855-7041

WWW.GENUINBIOTECH.COM