

# Anti-Membrane Metalloendopeptidase Recombinant Rabbit Monoclonal Antibody



**Catalog #: 2409**

## Aliases

Membrane Metalloendopeptidase; CALLA; NEP; Neprilysin; CD10; Common Acute Lymphocytic Leukemia Antigen; Neutral Endopeptidase 24.11; Skin Fibroblast Elastase; Neutral Endopeptidase; Atriopeptidase; Enkephalinase; EC 3.4.24.11; SFE; Membrane Metallo-Endopeptidase (Neutral Endopeptidase, Enkephalinase, CALLA, CD10); Neprilysin-390; Neprilysin-411; CD10 Antigen; EC 3.4.24; CMT2T; SCA43; EPN

## Background

Gene Name: MME

NCBI Gene Entry: [4311](#)

UniProt Entry: [P08473](#)

## Application Information

Molecular Weight: Predicted, 86 kDa; observed, 100 kDa

Clonality: Rabbit monoclonal antibody

Clone ID: 24GB710

Species Reactivity: Human

Applications Tested: Western blotting (WB), flow cytometry (FCM), immunocytochemistry (IC)

## Immunogen

A synthesized peptide derived from human CD10

## Isotype

Rabbit IgG

## Storage Buffer

Supplied in PBS (pH 7.4) containing 50% glycerol, and 0.02% sodium azide.

## Storage

Store at -20 °C for one year.

## Recommended Dilutions

Western Blotting (WB): 1:1,000-1:5,000

Flow Cytometry (FCM): 1:2,000

Immunocytochemistry (IC): 1:100-1:1,000

---

### SUPPORT

SUPPORT@GENUINBIOTECH.COM  
TEL: +1-540-855-7041

### ORDERS

SALES@GENUINBIOTECH.COM  
FAX: +1-540-855-7041

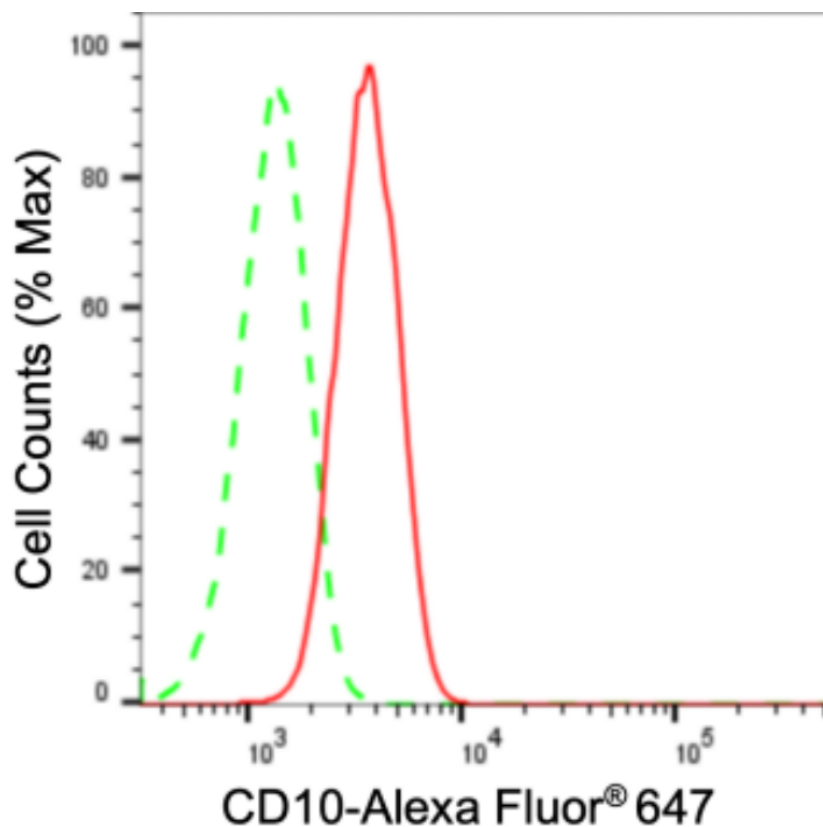
[WWW.GENUINBIOTECH.COM](http://WWW.GENUINBIOTECH.COM)

# Anti-Membrane Metalloendopeptidase Recombinant Rabbit Monoclonal Antibody

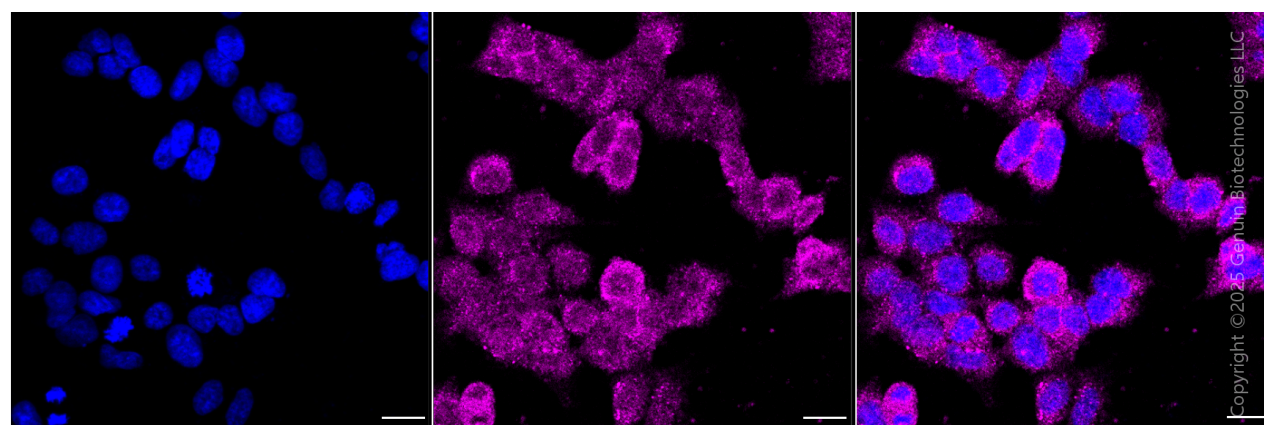
PAGE 2

**Note:** This product is for research use only.

## Validation Data



Copyright ©2024 Genuin Biotechnologies LLC



Copyright ©2025 Genuin Biotechnologies LLC

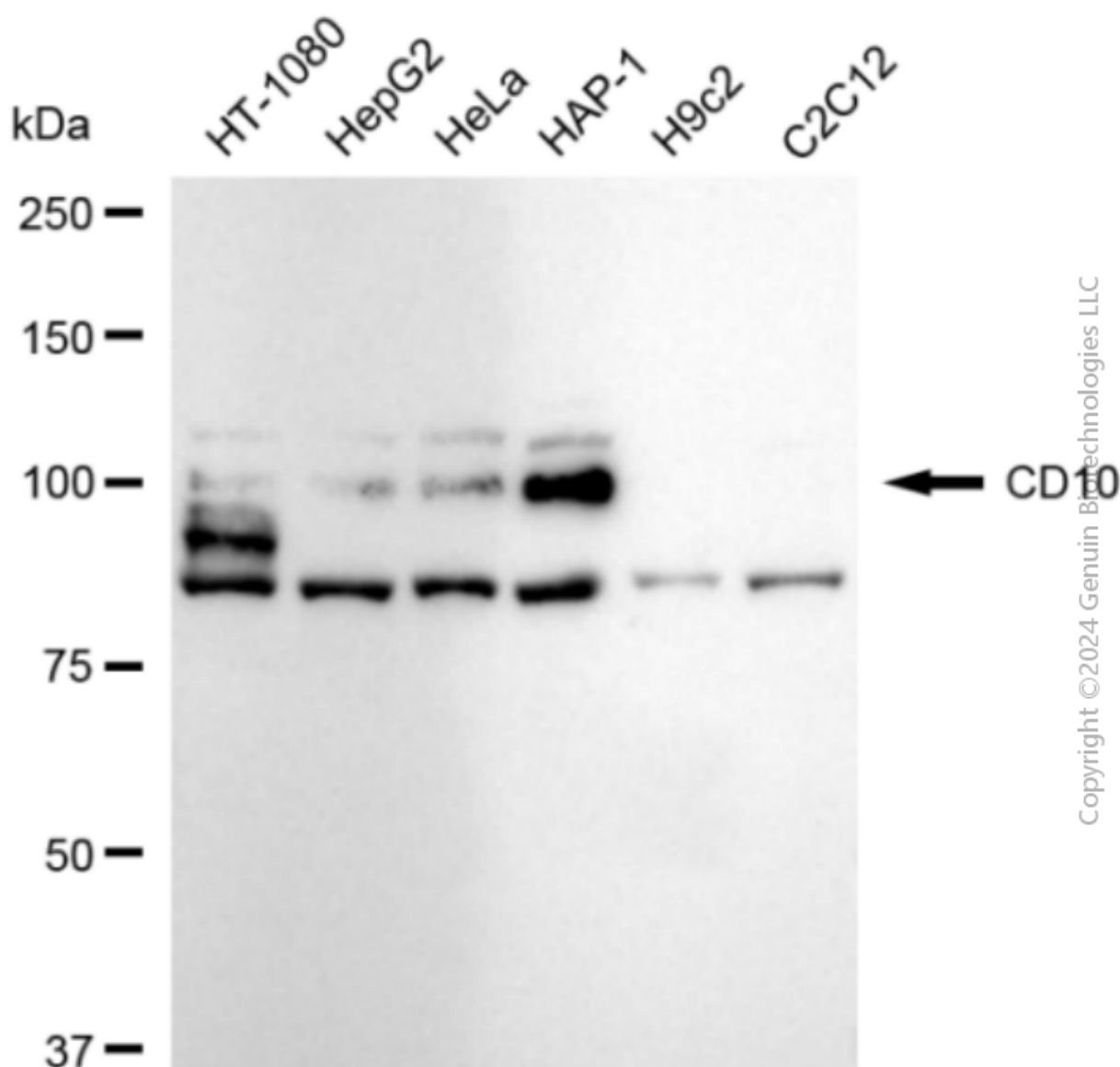
### SUPPORT

SUPPORT@GENUINBIOTECH.COM  
TEL: +1-540-855-7041

### ORDERS

SALES@GENUINBIOTECH.COM  
FAX: +1-540-855-7041

[WWW.GENUINBIOTECH.COM](http://WWW.GENUINBIOTECH.COM)



Western blotting analysis using anti-CD10 antibody (Cat#2409). Total cell lysates (30 µg) from various cell lines were loaded and separated by SDS-PAGE. The blot was incubated with anti-CD10 antibody (Cat#2409, 1:5,000) and HRP-conjugated goat anti-rabbit secondary antibody (Cat#201, 1:20,000) respectively. Image was developed using FeQ™ ECL Substrate Kit (Cat#226).