

Anti-NK2 Homeobox 2 Recombinant Rabbit Monoclonal Antibody



Catalog #: 2410

Aliases

NK2 Homeobox 2; NKX2.2; NKX2B; Homeobox Protein NK-2 Homolog B; Homeobox Protein Nkx-2.2; NK2 Transcription Factor Related, Locus 2 (Drosophila); NK2 Transcription Factor Related, Locus 2; NK2 Transcription Factor-Like Protein B; NK-2 (Drosophila) Homolog B

Background

Gene Name: NKX2-2

NCBI Gene Entry: [4821](#)

UniProt Entry: [O95096](#)

Application Information

Molecular Weight: Predicted, 30 kDa; observed, 30 kDa

Clonality: Rabbit monoclonal antibody

Clone ID: 24GB715

Species Reactivity: Human, mouse

Applications Tested: Western blotting (WB), flow cytometry (FCM), immunocytochemistry (IC)

Immunogen

A synthesized peptide derived from human NKX2.2

Isotype

Rabbit IgG

Storage Buffer

Supplied in PBS (pH 7.4) containing 50% glycerol, and 0.02% sodium azide.

Storage

Store at -20 °C for one year.

Recommended Dilutions

Western Blotting (WB): 1:1,000-1:5,000

Flow Cytometry (FCM): 1:2,000

Immunocytochemistry (IC): 1:100-1:1,000

Note: This product is for research use only.

SUPPORT

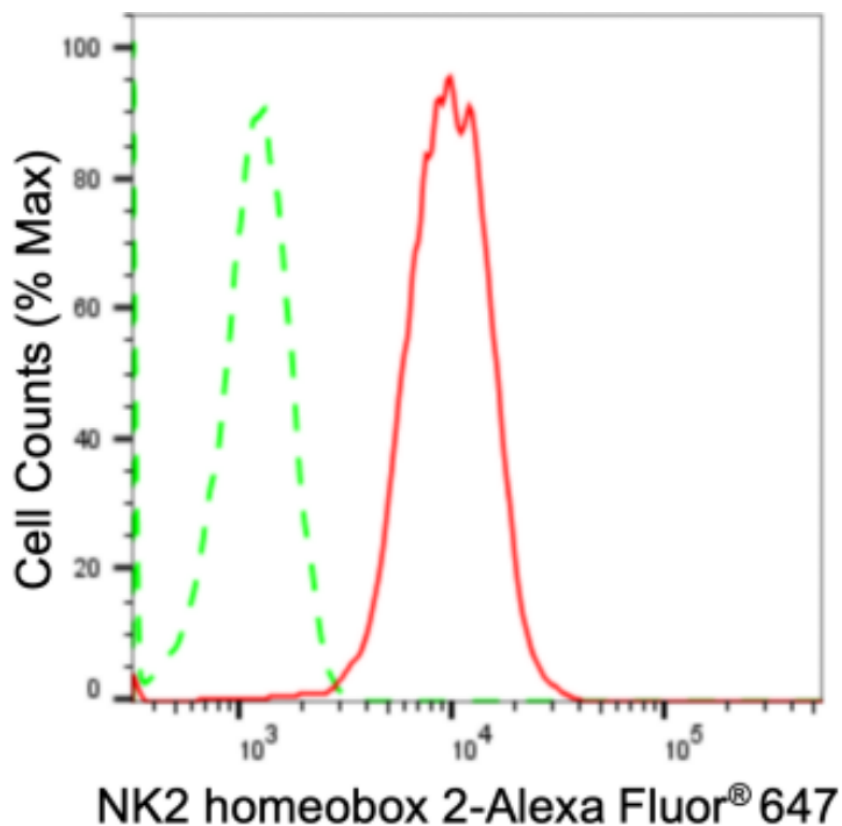
SUPPORT@GENUINBIOTECH.COM
TEL: +1-540-855-7041

ORDERS

SALES@GENUINBIOTECH.COM
FAX: +1-540-855-7041

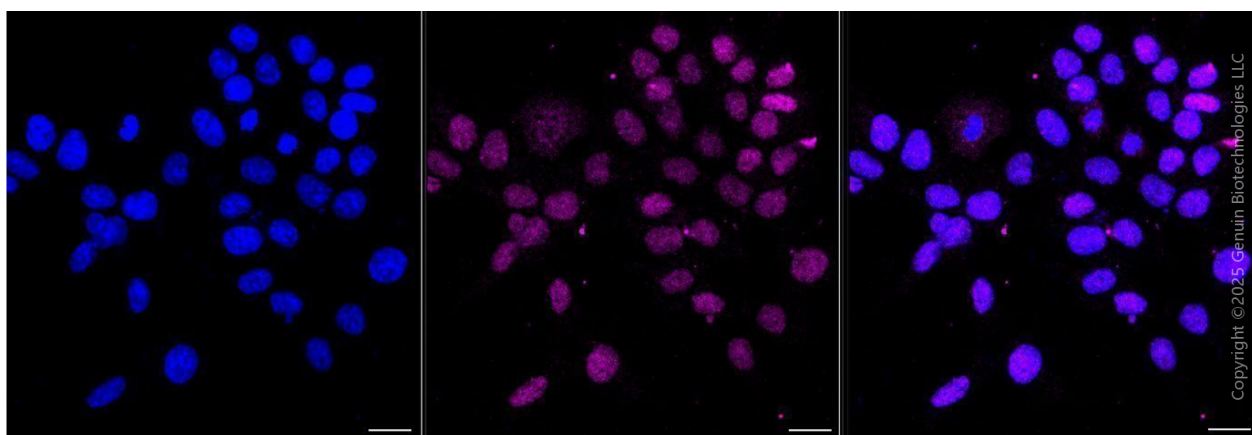
WWW.GENUINBIOTECH.COM

Validation Data



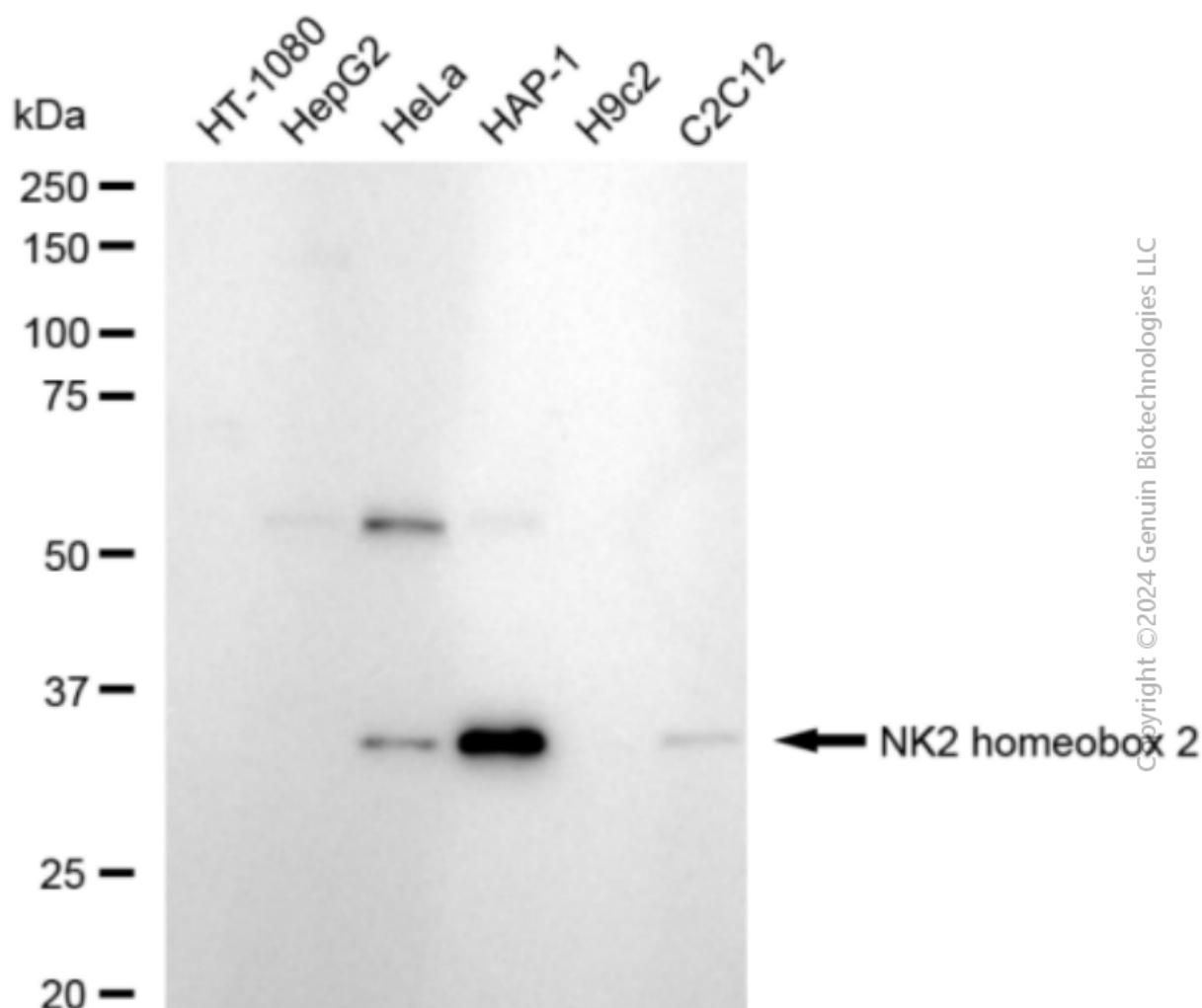
Copyright ©2024 Genuin Biotechnologies LLC

Flow cytometric analysis of NK2 homeobox 2 expression in HAP-1 cells using anti-NK2 homeobox 2 antibody (Cat#2410, 1:2,000). Green, isotype control; red, NK2 homeobox 2.



Copyright ©2025 Genuin Biotechnologies LLC

Immunocytochemical staining of HAP-1 cells with anti-NK2 homeobox 2 antibody (Cat#2410, 1:1,000). Nuclei were stained blue with DAPI; NK2 homeobox 2 was stained magenta with Alexa Fluor® 647. Images were taken using Leica stellaris 5. Protein abundance based on laser Intensity and smart gain: Medium. Scale bar, 20 μ m.



Western blotting analysis using anti-NK2 homeobox 2 antibody (Cat#2410). Total cell lysates (30 μ g) from various cell lines were loaded and separated by SDS-PAGE. The blot was incubated with anti-NK2 homeobox 2 antibody (Cat#2410, 1:5,000) and HRP-conjugated goat anti-rabbit secondary antibody (Cat#201, 1:20,000) respectively. Image was developed using FeQ™ ECL Substrate Kit (Cat#226).