

Anti-Dyskerin pseudouridine synthase 1 Recombinant Rabbit Monoclonal Antibody



Catalog #: 2411

Aliases

DKC1; Dyskerin Pseudouridine Synthase 1; NOLA4; XAP101; NAP57; H/ACA Ribonucleoprotein Complex Subunit DKC1; H/ACA Ribonucleoprotein Complex Subunit; Nopp140-Associated Protein Of 57 KDa; Nucleolar Protein Family A Member 4; Dyskeratosis Congenita 1, Dyskerin; Nucleolar Protein NAP57; SnoRNP Protein DKC1; CBF5 Homolog; Dyskerin; CBF5; DKC; EC 5.4.99.-; EC 5.4.99; DYSKERIN; CHINE1; Cbf5; DKCX

Background

Gene Name: DKC1
NCBI Gene Entry: [1736](#)
UniProt Entry: [O60832](#)

Application Information

Molecular Weight: Predicted, 58 kDa; observed, 58 kDa
Clonality: Rabbit monoclonal antibody
Clone ID: 23GB1810
Species Reactivity: Human, mouse, rat
Applications Tested: Western blotting (WB), flow cytometry (FCM), immunocytochemistry (IC)

Immunogen

A synthesized peptide derived from human DKC1

Isotype

Rabbit IgG

Storage Buffer

Supplied in PBS (pH 7.4) containing 50% glycerol, and 0.02% sodium azide.

Storage

Store at -20 °C for one year.

Recommended Dilutions

Western Blotting (WB): 1:1,000-1:5,000
Flow Cytometry (FCM): 1:2,000
Immunocytochemistry (IC): 1:100-1:1,000

SUPPORT

SUPPORT@GENUINBIOTECH.COM
TEL: +1-540-855-7041

ORDERS

SALES@GENUINBIOTECH.COM
FAX: +1-540-855-7041

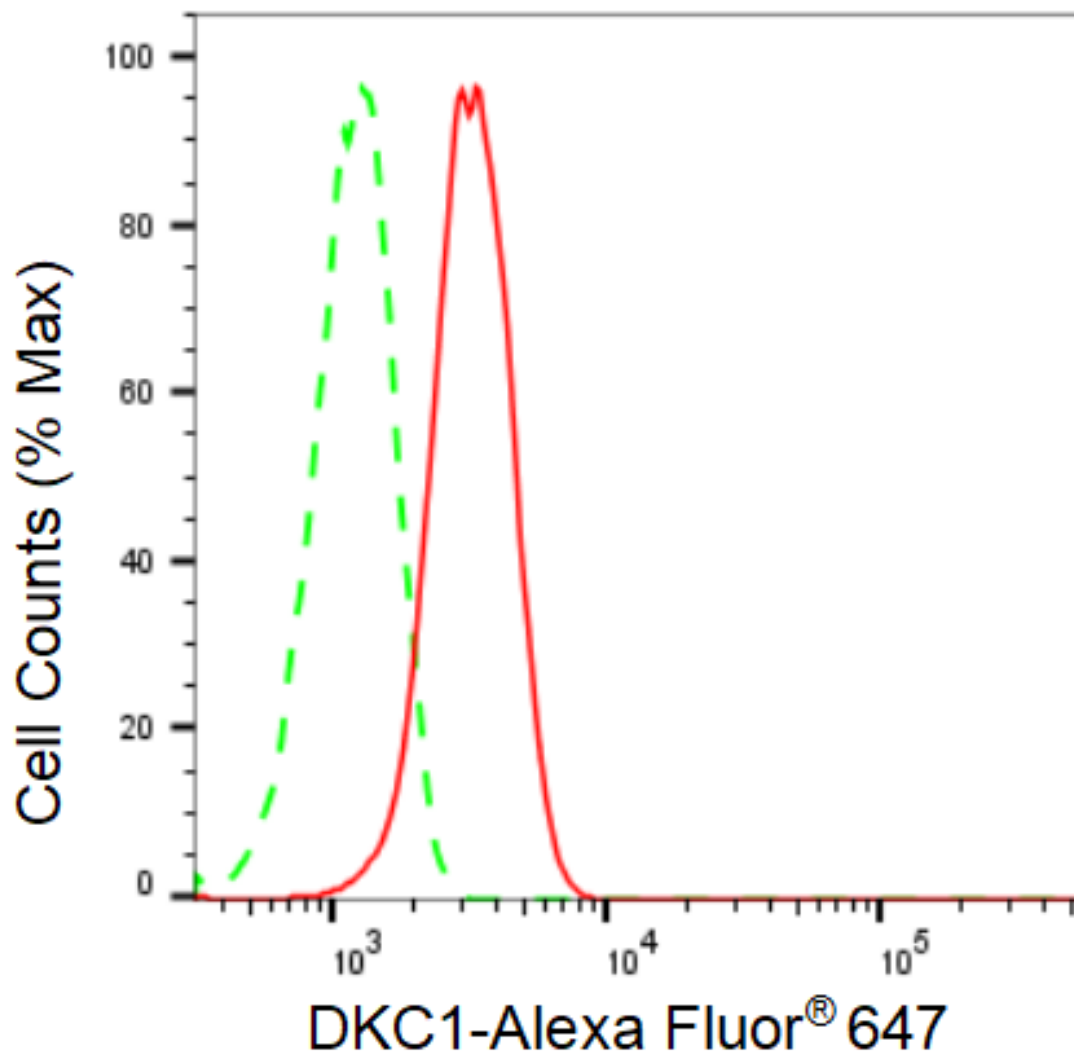
WWW.GENUINBIOTECH.COM

Anti-Dyskerin pseudouridine synthase 1 Recombinant Rabbit Monoclonal Antibody

PAGE 2

Note: This product is for research use only.

Validation Data



Copyright ©2025 Genuin Biotechnologies LLC

Flow cytometric analysis of DKC1 expression in HepG2 cells using anti-DKC1 antibody (Cat#2411, 1 μ 2000). Green, isotype control; red, DKC1.

SUPPORT

SUPPORT@GENUINBIOTECH.COM
TEL: +1-540-855-7041

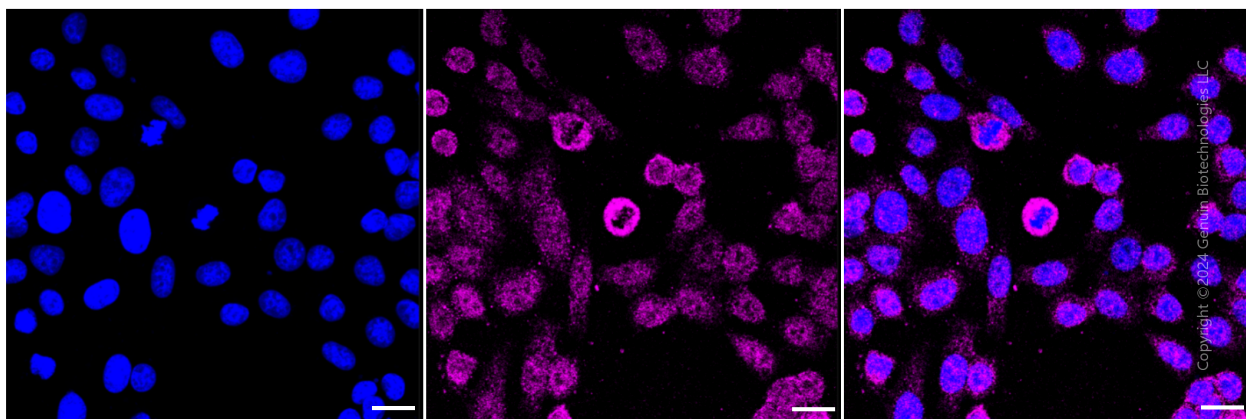
ORDERS

SALES@GENUINBIOTECH.COM
FAX: +1-540-855-7041

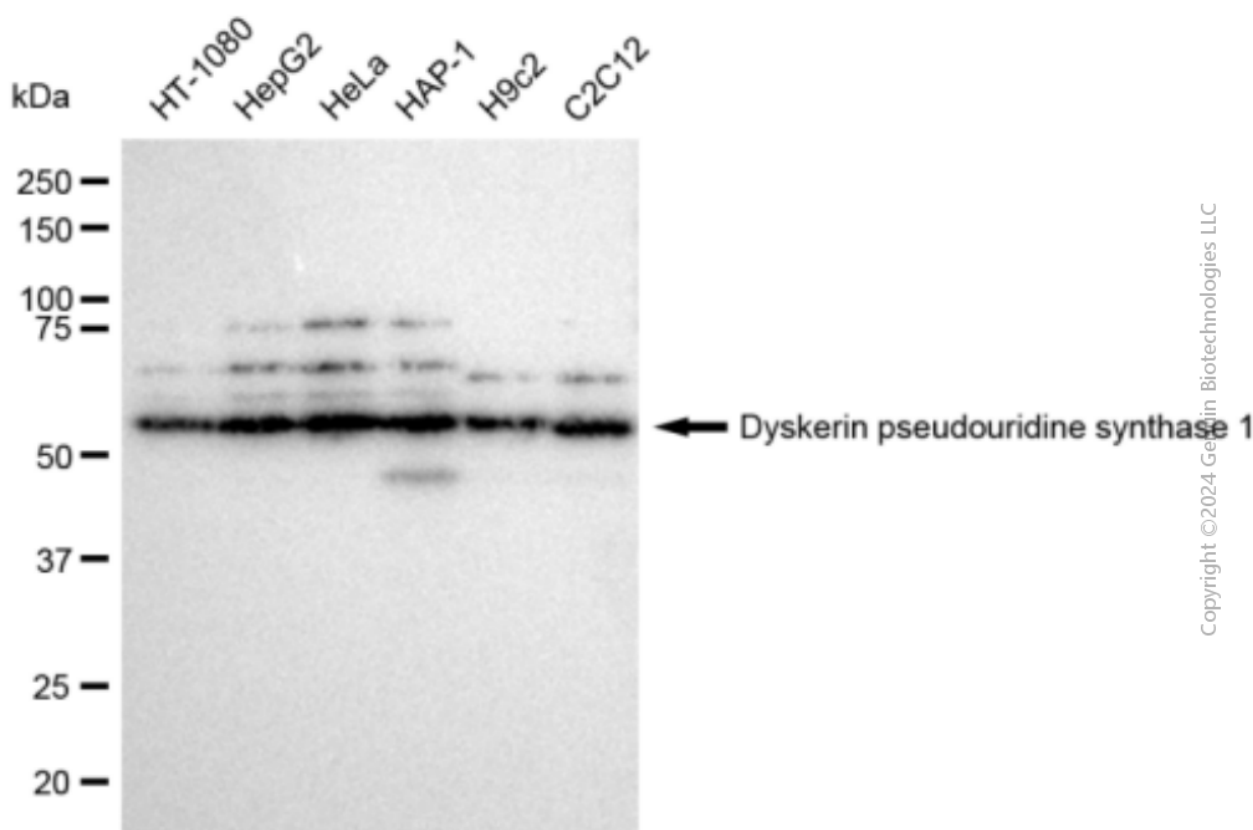
WWW.GENUINBIOTECH.COM

Anti-Dyskerin pseudouridine synthase 1 Recombinant Rabbit Monoclonal Antibody

PAGE 3



Immunocytochemical staining of HepG2 cells with Dyskerin pseudouridine synthase 1 antibody (Cat#2411, 1:1,000). Nuclei were stained blue with DAPI; Dyskerin pseudouridine synthase 1 was stained magenta with Alexa Fluor® 647. Images were taken using Leica stellaris 5. Protein abundance based on laser Intensity and smart gain: Medium. Scale bar: 20 μ m.



Western blotting analysis using anti-Dyskerin pseudouridine synthase 1 antibody (Cat#2411). Total cell lysates (30 μ g) from various cell lines were loaded and separated by SDS-PAGE. The blot was incubated with anti-Dyskerin pseudouridine synthase 1 antibody (Cat#2411, 1:5,000) and HRP-conjugated goat anti-rabbit secondary antibody (Cat#201, 1:20,000) respectively. Image was developed using FeQ™ ECL Substrate Kit (Cat#226).

SUPPORT

SUPPORT@GENUINBIOTECH.COM
TEL: +1-540-855-7041

ORDERS

SALES@GENUINBIOTECH.COM
FAX: +1-540-855-7041

WWW.GENUINBIOTECH.COM

Anti-Dyskerin pseudouridine synthase 1 Recombinant Rabbit Monoclonal Antibody

PAGE 4

SUPPORT

SUPPORT@GENUINBIOTECH.COM
TEL: +1-540-855-7041

ORDERS

SALES@GENUINBIOTECH.COM
FAX: +1-540-855-7041

WWW.GENUINBIOTECH.COM