

Anti-FKBP prolyl isomerase 4 Recombinant Rabbit Monoclonal Antibody



Catalog #: 2416

Aliases

FKBP4; FKBP Prolyl Isomerase 4; FKBP59; FKBP52; Peptidyl-Prolyl Cis-Trans Isomerase FKBP4; FK506 Binding Protein 4, 59kDa; EC 5.2.1.8; Rotamase; FKBP51; HBI; T-Cell FK506-Binding Protein, 59kD; Peptidylprolyl Cis-Trans Isomerase; FK506-Binding Protein 4 (59kD); 51 KDa FK506-Binding Protein; 52 KDa FK506-Binding Protein; HSP Binding Immunophilin; HSP-Binding Immunophilin; FK506 Binding; Protein 4; FK506-Binding Protein 4; 59 KDa Immunophilin; Immunophilin FKBP52; PPIase FKBP4; 52 KDa; FKBP; FKBP-52; PPIase; FKBP-4; Hsp56; P52; P59

Background

Gene Name: FKBP4

NCBI Gene Entry: [2288](#)

UniProt Entry: [Q02790](#)

Application Information

Molecular Weight: Predicted, 52 kDa; observed, 52 kDa

Clonality: Rabbit monoclonal antibody

Clone ID: 23GB1915

Species Reactivity: Human, mouse, rat

Applications Tested: Western blotting (WB), flow cytometry (FCM), immunocytochemistry (IC)

Immunogen

A synthesized peptide derived from human FKBP52

Isotype

Rabbit IgG

Storage Buffer

Supplied in PBS (pH 7.4) containing 50% glycerol, and 0.02% sodium azide.

Storage

Store at -20 °C for one year.

Recommended Dilutions

Western Blotting (WB): 1:1,000-1:5,000

Flow Cytometry (FCM): 1:2,000

SUPPORT

SUPPORT@GENUINBIOTECH.COM
TEL: +1-540-855-7041

ORDERS

SALES@GENUINBIOTECH.COM
FAX: +1-540-855-7041

WWW.GENUINBIOTECH.COM

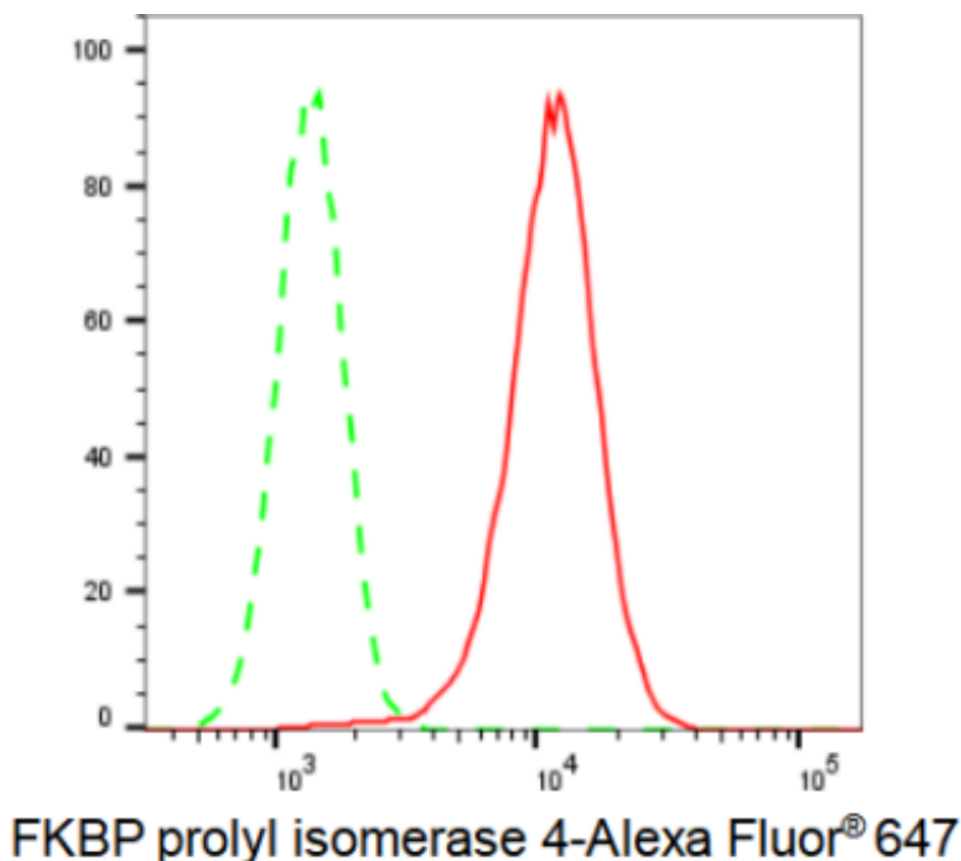
Anti-FKBP prolyl isomerase 4 Recombinant Rabbit Monoclonal Antibody

PAGE 2

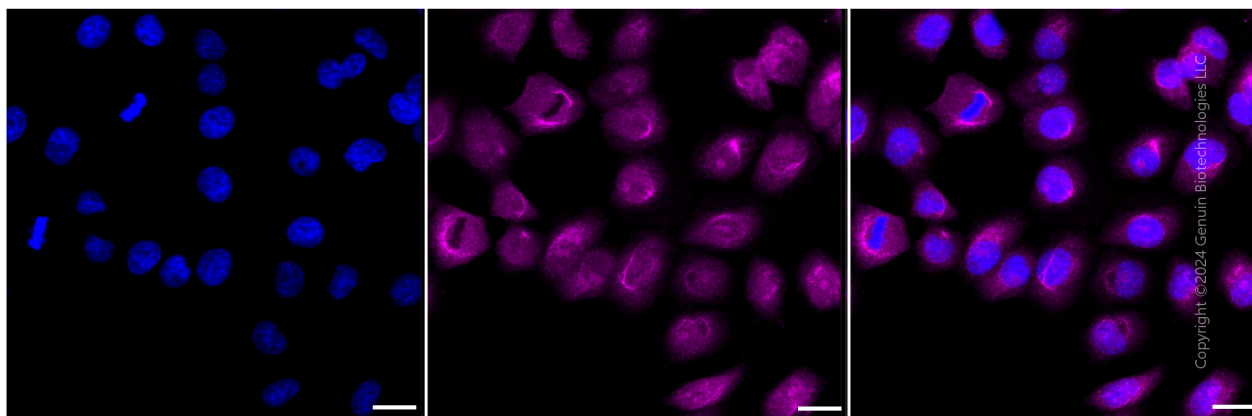
Immunocytochemistry (IC): 1:100-1:1,000

Note: This product is for research use only.

Validation Data



Copyright ©2024 Genuin Biotechnologies LLC



Copyright ©2024 Genuin Biotechnologies LLC

SUPPORT

SUPPORT@GENUINBIOTECH.COM
TEL: +1-540-855-7041

ORDERS

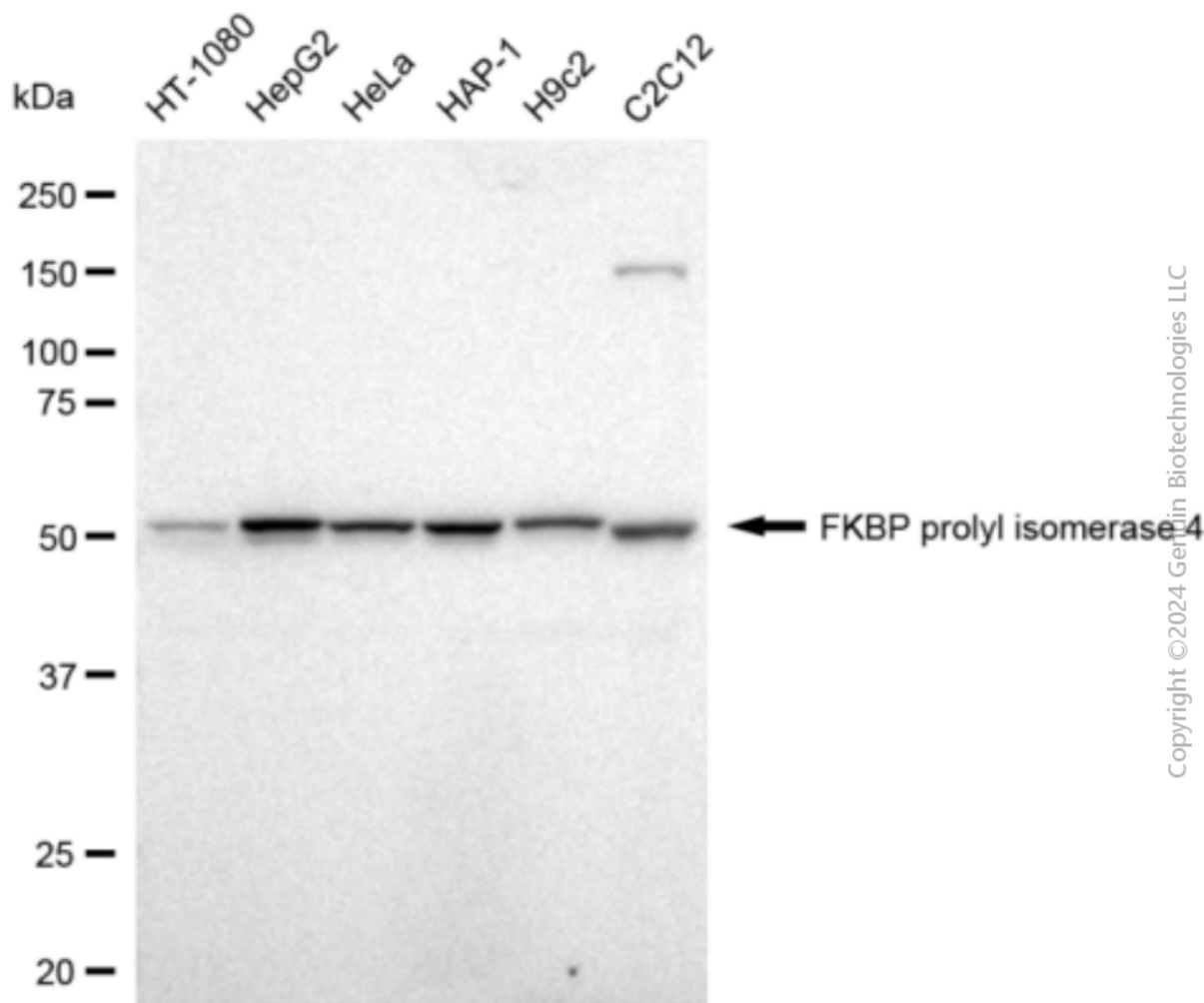
SALES@GENUINBIOTECH.COM
FAX: +1-540-855-7041

WWW.GENUINBIOTECH.COM

Anti-FKBP prolyl isomerase 4 Recombinant Rabbit Monoclonal Antibody

PAGE 3

1:1,000). Nuclei were stained blue with DAPI; FKBP prolyl isomerase 4 was stained magenta with Alexa Fluor® 647. Images were taken using Leica stellaris 5. Protein abundance based on laser Intensity and smart gain: High. Scale bar: 20 μ m.



Copyright ©2024 Genin Biotechnologies LLC

Western blotting analysis using anti-FKBP prolyl isomerase 4 antibody (Cat#2416). Total cell lysates (30 μ g) from various cell lines were loaded and separated by SDS-PAGE. The blot was incubated with anti-FKBP prolyl isomerase 4 antibody (Cat#2416, 1:5,000) and HRP-conjugated goat anti-rabbit secondary antibody (Cat#201, 1:20,000) respectively. Image was developed using FeQ™ ECL Substrate Kit (Cat#226).

SUPPORT

SUPPORT@GENUINBIOTECH.COM
TEL: +1-540-855-7041

ORDERS

SALES@GENUINBIOTECH.COM
FAX: +1-540-855-7041

WWW.GENUINBIOTECH.COM