

Anti-NUDC Recombinant Rabbit Monoclonal Antibody



Catalog #: 2420

Aliases

Nuclear Distribution C, Dynein Complex Regulator; Nuclear Distribution Protein C Homolog; NudC Nuclear Distribution Protein; Nuclear Migration Protein NudC; Nuclear Distribution Gene C Homolog (A. Nidulans); Nuclear Distribution C Homolog (A. Nidulans); Nuclear Distribution Gene C Homolog; Nuclear Distribution C Homolog; NPD011; HNUDC; MNUDC

Background

Gene Name: NUDC

NCBI Gene Entry: [10726](#)

UniProt Entry: [Q9Y266](#)

Application Information

Molecular Weight: Predicted, 38 kDa; observed, 42 kDa

Clonality: Rabbit monoclonal antibody

Clone ID: 24GB750

Species Reactivity: Human, mouse, rat

Applications Tested: Western blotting (WB), flow cytometry (FCM), immunocytochemistry (IC)

Immunogen

A synthesized peptide derived from human NUDC

Isotype

Rabbit IgG

Storage Buffer

Supplied in PBS (pH 7.4) containing 50% glycerol, and 0.02% sodium azide.

Storage

Store at -20 °C for one year.

Recommended Dilutions

Western Blotting (WB): 1:1,000-1:5,000

Flow Cytometry (FCM): 1:2,000

Immunocytochemistry (IC): 1:100-1:1,000

SUPPORT

SUPPORT@GENUINBIOTECH.COM
TEL: +1-540-855-7041

ORDERS

SALES@GENUINBIOTECH.COM
FAX: +1-540-855-7041

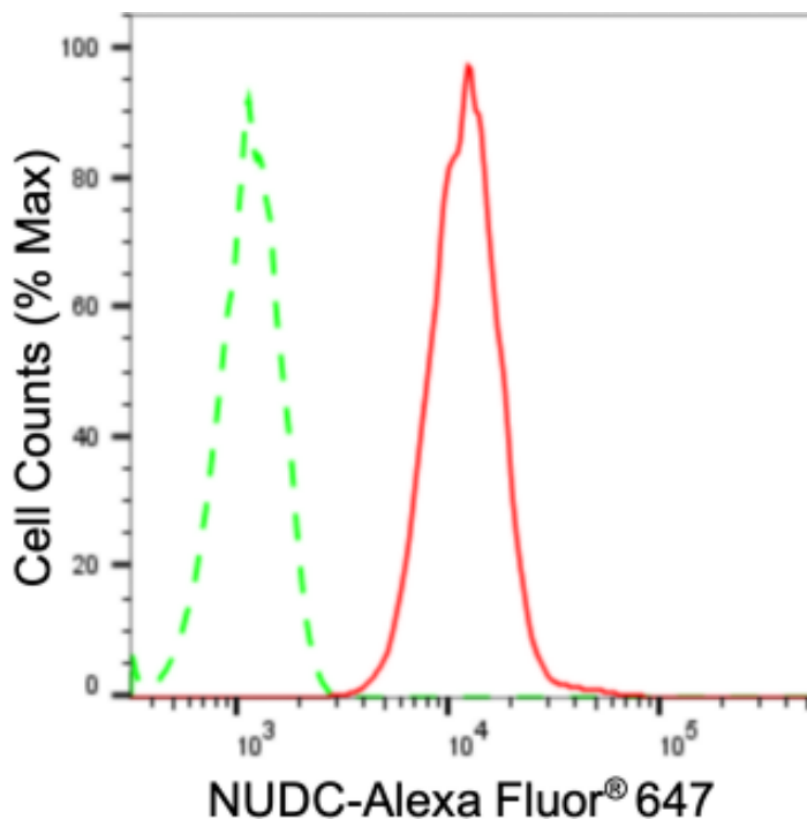
WWW.GENUINBIOTECH.COM

Anti-NUDC Recombinant Rabbit Monoclonal Antibody

PAGE 2

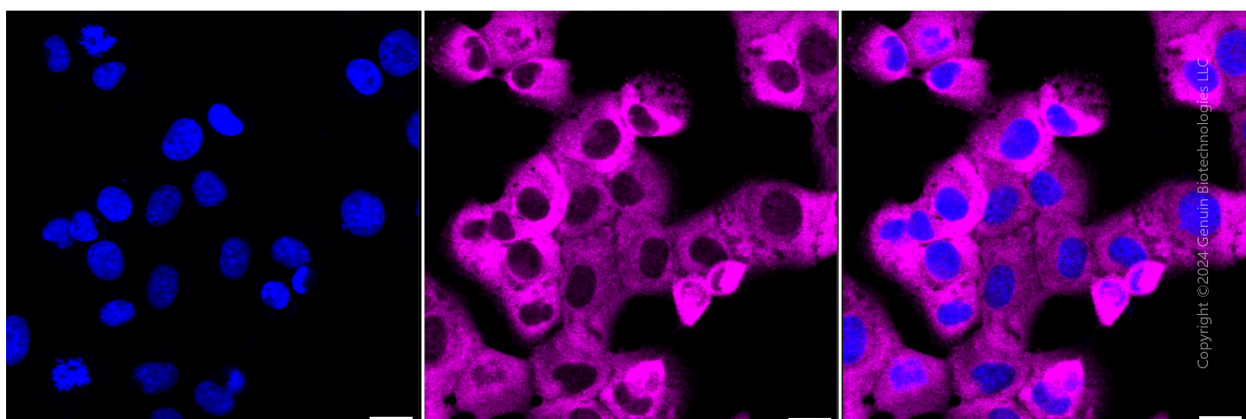
Note: This product is for research use only.

Validation Data



Copyright ©2024 Genuin Biotechnologies LLC

Flow cytometric analysis of NUDC expression in HT-1080 cells using anti-NUDC antibody (Cat#2420, 1:2,000). Green, isotype control; red, NUDC.



Copyright ©2024 Genuin Biotechnologies LLC

Immunocytochemical staining of HT-1080 cells with anti-NUDC antibody (Cat#2420, 1:1,000). Nuclei were stained blue with DAPI; NUDC was stained magenta with Alexa Fluor® 647. Images were taken using Leica stellaris 5. Protein abundance based on laser Intensity and smart gain: Medium. Scale bar: 20 µm.

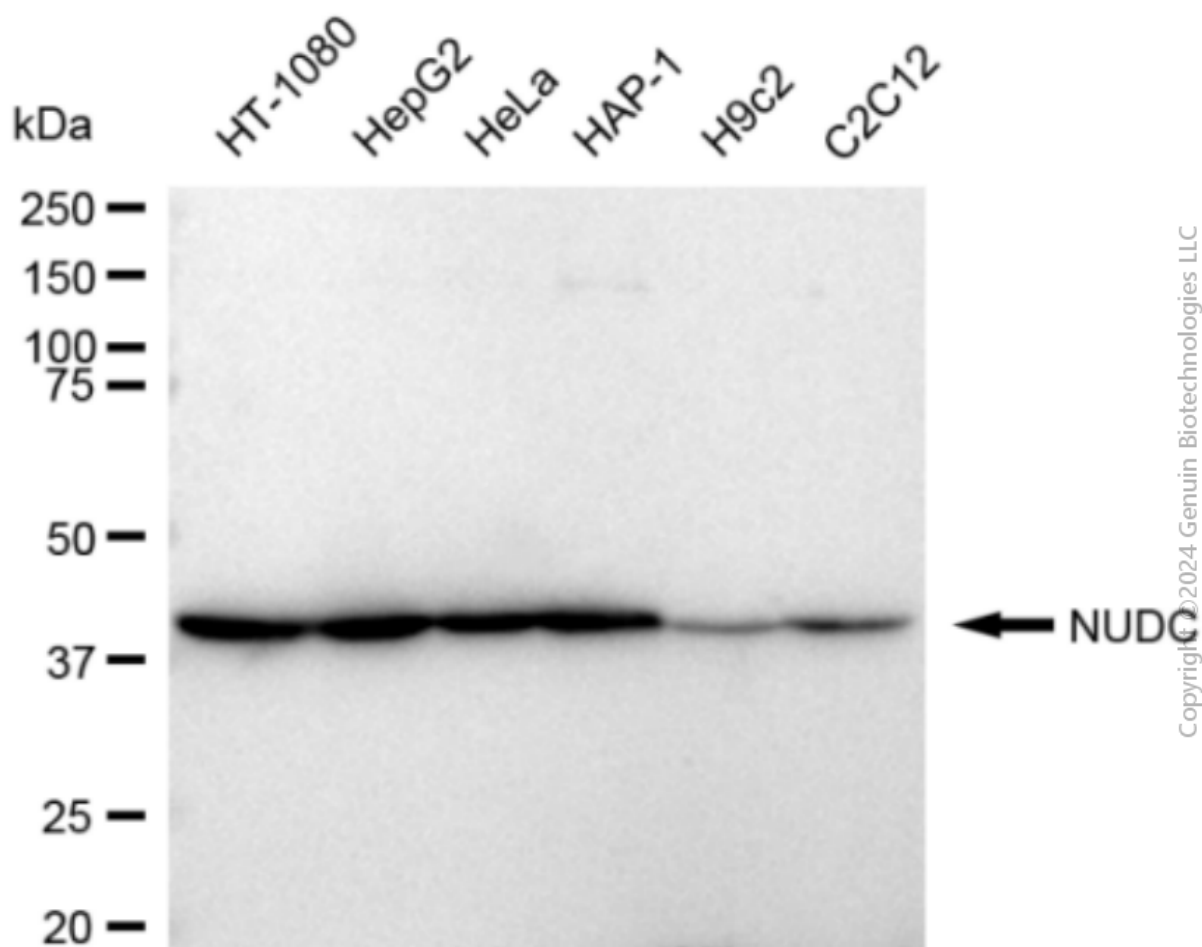
SUPPORT

SUPPORT@GENUINBIOTECH.COM
TEL: +1-540-855-7041

ORDERS

SALES@GENUINBIOTECH.COM
FAX: +1-540-855-7041

WWW.GENUINBIOTECH.COM



Western blotting analysis using anti-NUDC antibody (Cat#2420). Total cell lysates (30 μ g) from various cell lines were loaded and separated by SDS-PAGE. The blot was incubated with anti-NUDC antibody (Cat#2420, 1:5,000) and HRP-conjugated goat anti-rabbit secondary antibody (Cat#201, 1:20,000) respectively. Image was developed using FeQ™ ECL Substrate Kit (Cat#226).