

Anti-Leukotriene A4 Hydrolase Recombinant Rabbit Monoclonal Antibody



Catalog #: 2422

Aliases

Leukotriene A4 Hydrolase; Tripeptide Aminopeptidase LTA4H; Leukotriene A-4 Hydrolase; LTA-4 Hydrolase; Testicular Secretory Protein Li 27; Leukotriene A(4) Hydrolase; EC 3.4.11.4; EC 3.3.2.6; LTA4

Background

Gene Name: LTA4H

NCBI Gene Entry: [4048](#)

UniProt Entry: [P09960](#)

Application Information

Molecular Weight: Predicted, 69 kDa; observed, 69 kDa

Clonality: Rabbit monoclonal antibody

Clone ID: 24GB760

Species Reactivity: Human, mouse, rat

Applications Tested: Western blotting (WB), flow cytometry (FCM), immunocytochemistry (IC)

Immunogen

A synthesized peptide derived from human LTA4H

Isotype

Rabbit IgG

Storage Buffer

Supplied in PBS (pH 7.4) containing 50% glycerol, and 0.02% sodium azide.

Storage

Store at -20 °C for one year.

Recommended Dilutions

Western Blotting (WB): 1:1,000-1:5,000

Flow Cytometry (FCM): 1:2,000

Immunocytochemistry (IC): 1:100-1:1,000

Note: This product is for research use only.

SUPPORT

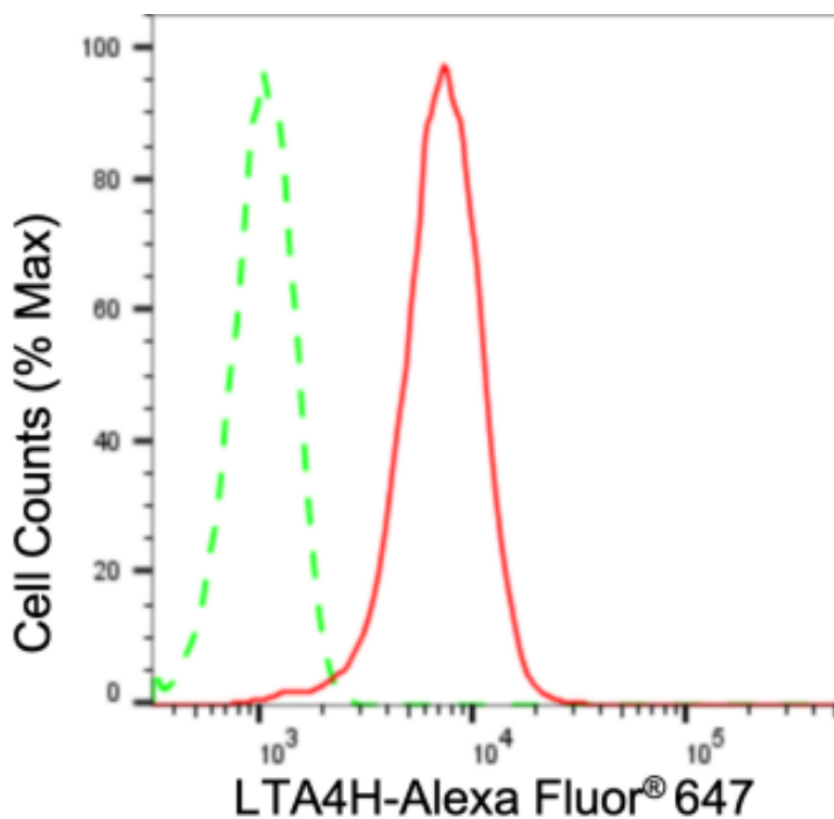
SUPPORT@GENUINBIOTECH.COM
TEL: +1-540-855-7041

ORDERS

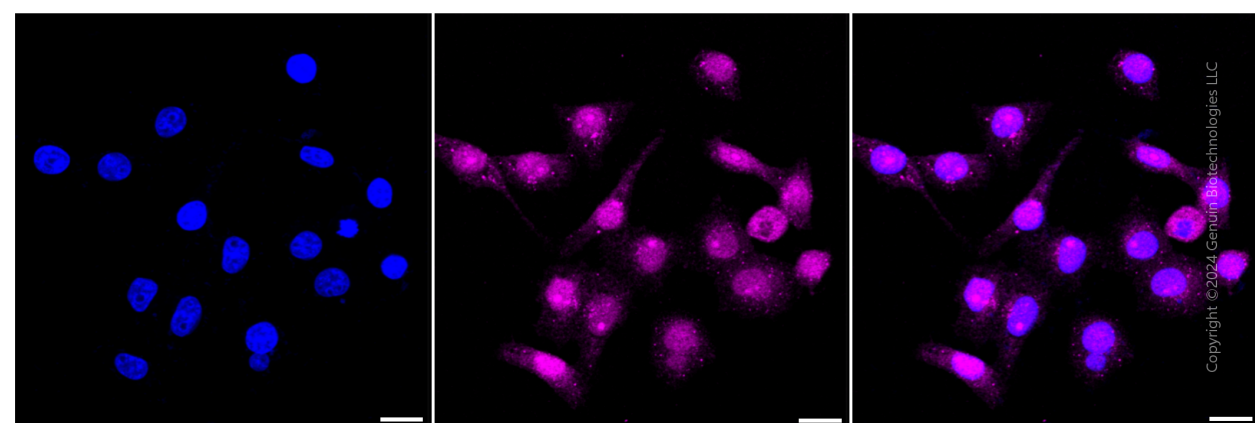
SALES@GENUINBIOTECH.COM
FAX: +1-540-855-7041

WWW.GENUINBIOTECH.COM

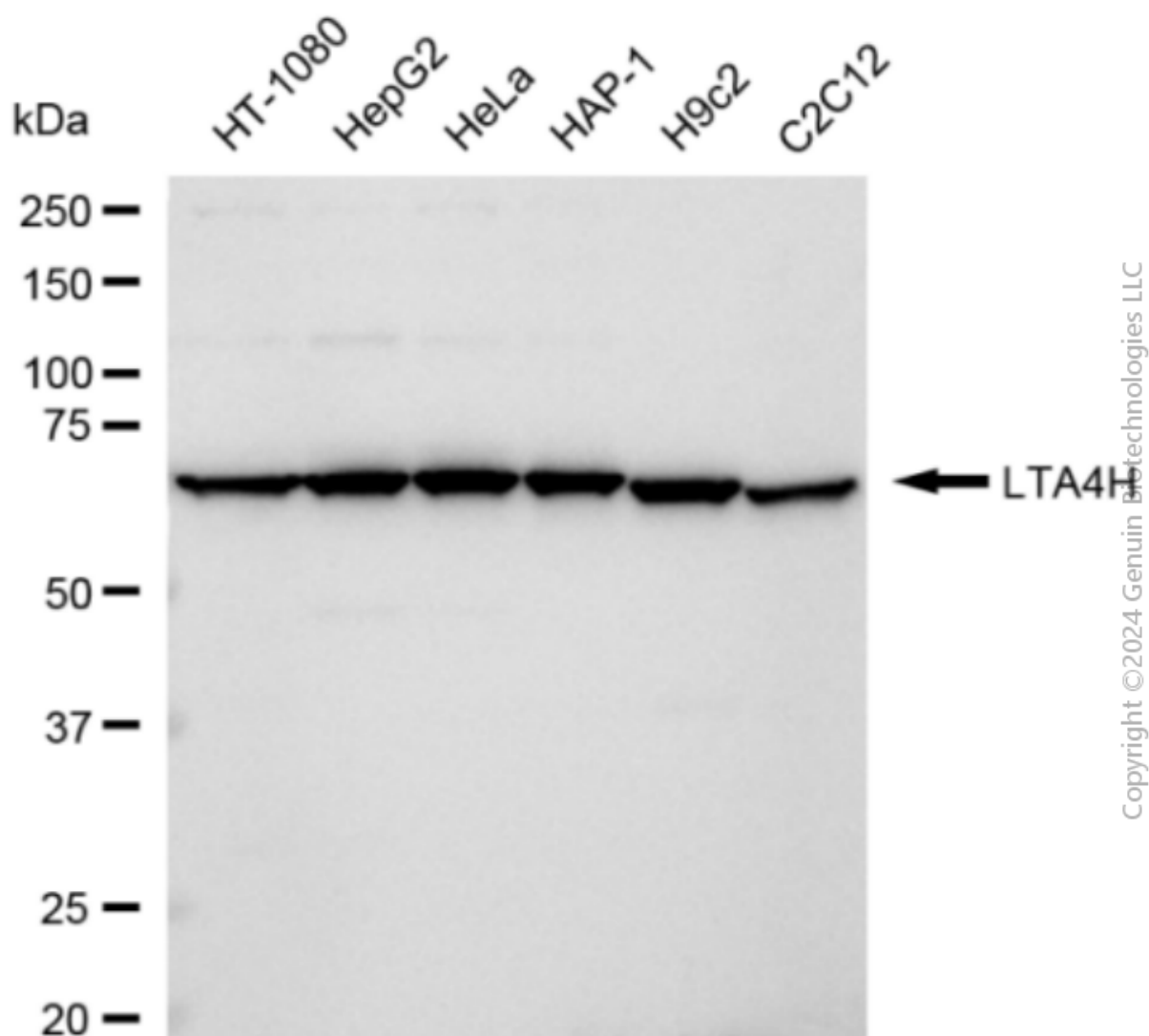
Validation Data



Copyright © 2024 Genuin Biotechnologies LLC



Copyright © 2024 Genuin Biotechnologies LLC



Western blotting analysis using anti-LTA4H antibody (Cat#2422). Total cell lysates (30 µg) from various cell lines were loaded and separated by SDS-PAGE. The blot was incubated with anti-LTA4H antibody (Cat#2422, 1:5,000) and HRP-conjugated goat anti-rabbit secondary antibody (Cat#201, 1:20,000) respectively. Image was developed using FeQ™ ECL Substrate Kit (Cat#226).