

# Anti-Ribosomal Protein L13 Recombinant Rabbit Monoclonal Antibody



**Catalog #: 2424**

## Aliases

Ribosomal Protein L13; BBC1; D16S444E; L13; Large Ribosomal Subunit Protein EL13; Breast Basic Conserved Protein 1; 60S Ribosomal Protein L13; Breast Basic Conserved 1; EL13; D16S44E; SEMDIST

## Background

Gene Name: RPL13

NCBI Gene Entry: [6137](#)

UniProt Entry: [P26373](#)

## Application Information

Molecular Weight: Predicted, 24 kDa; observed, 24 kDa

Clonality: Rabbit monoclonal antibody

Clone ID: 24GB770

Species Reactivity: Human, mouse, rat

Applications Tested: Western blotting (WB), flow cytometry (FCM), immunocytochemistry (IC)

## Immunogen

A synthesized peptide derived from human RPL13

## Isotype

Rabbit IgG

## Storage Buffer

Supplied in PBS (pH 7.4) containing 50% glycerol, and 0.02% sodium azide.

## Storage

Store at -20 °C for one year.

## Recommended Dilutions

Western Blotting (WB): 1:1,000-1:5,000

Flow Cytometry (FCM): 1:2,000

Immunocytochemistry (IC): 1:100-1:1,000

**Note:** This product is for research use only.

---

### SUPPORT

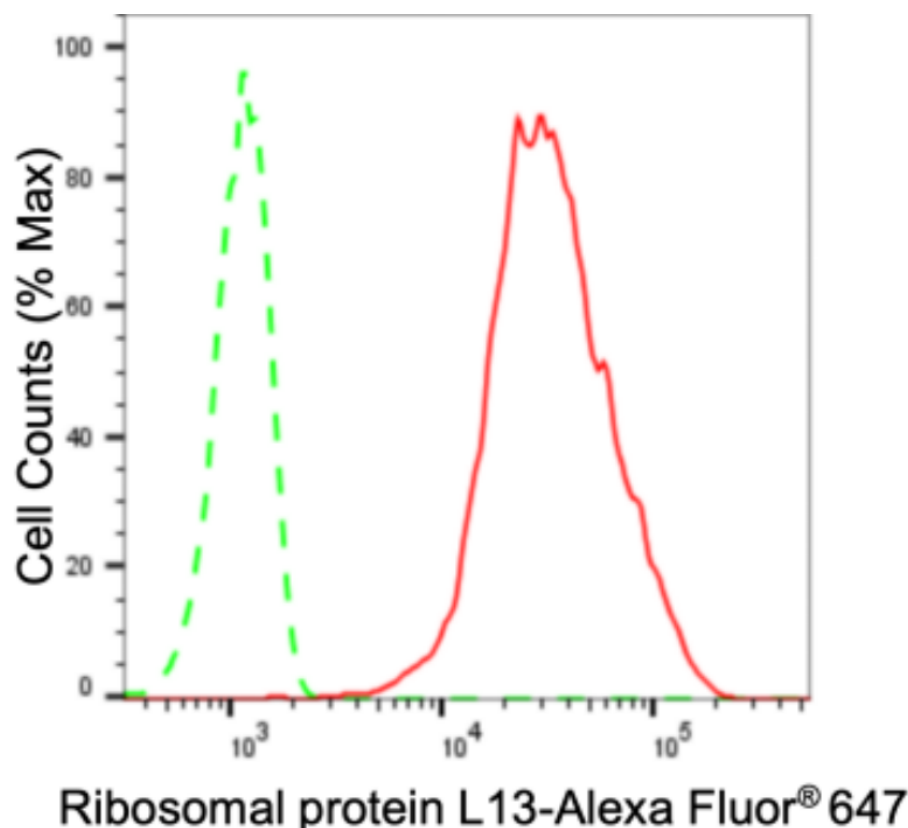
SUPPORT@GENUINBIOTECH.COM  
TEL: +1-540-855-7041

### ORDERS

SALES@GENUINBIOTECH.COM  
FAX: +1-540-855-7041

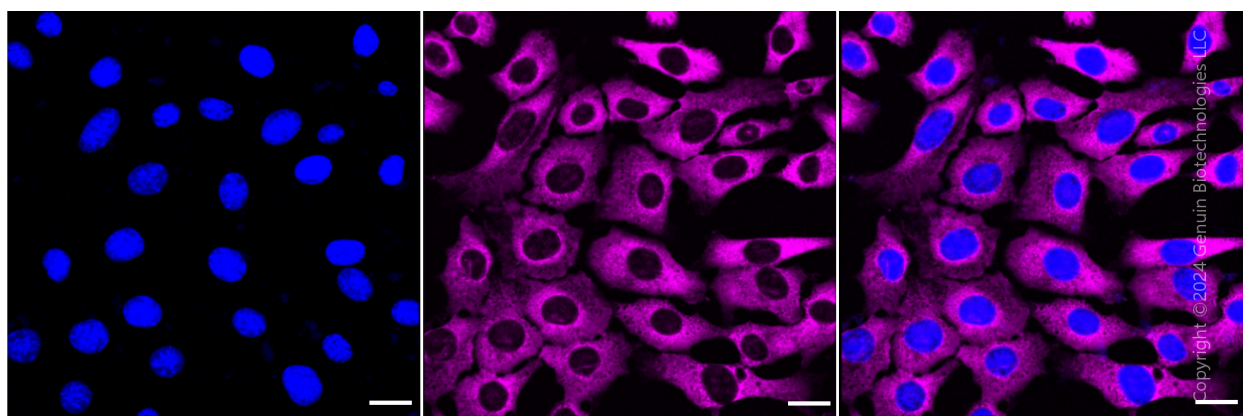
[WWW.GENUINBIOTECH.COM](http://WWW.GENUINBIOTECH.COM)

**Validation Data**



Copyright ©2024 Genuin Biotechnologies LLC

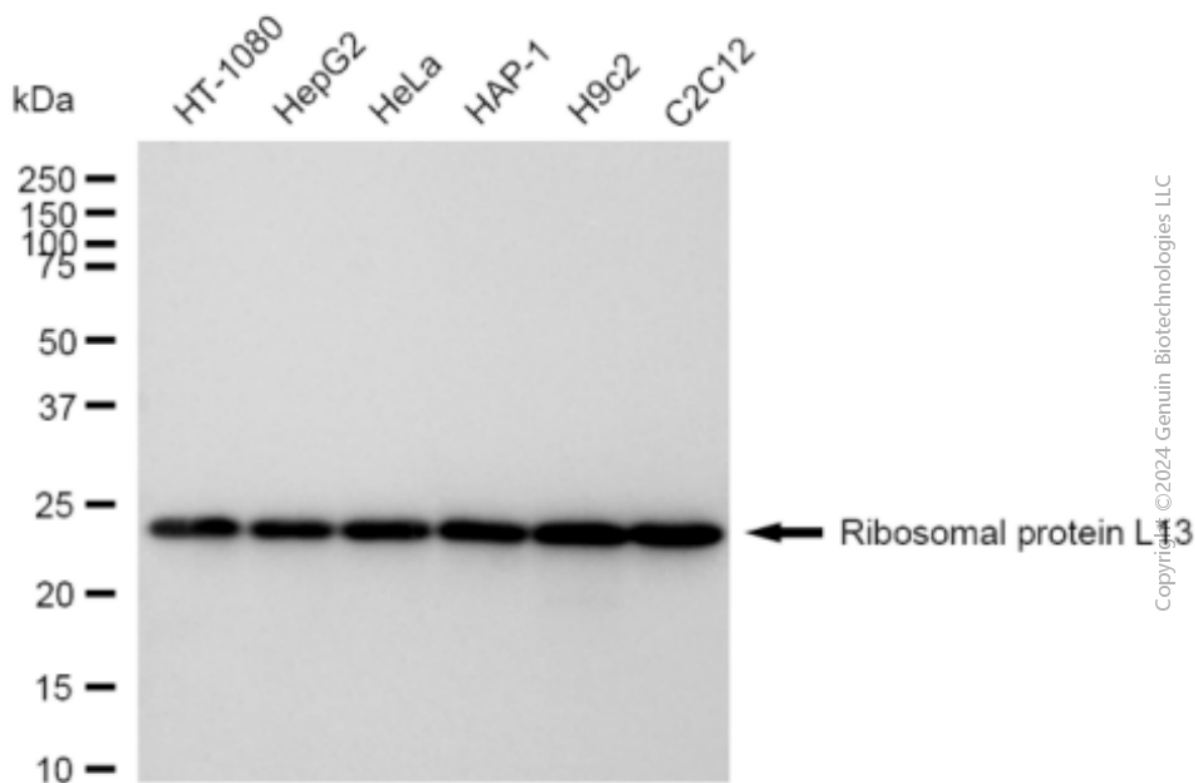
Flow cytometric analysis of Ribosomal protein L13 expression in C2C12 cells using Ribosomal protein L13 antibody (Cat#2424, 1:2,000). Green, isotype control; red, Ribosomal protein L13.



Immunocytochemical staining of C2C12 cells with anti-Ribosomal protein L13 antibody (Cat#2424, 1:1,000). Nuclei were stained blue with DAPI; Ribosomal protein L13 was stained magenta with Alexa Fluor® 647. Images were taken using Leica stellaris 5. Protein abundance based on laser Intensity and smart gain: High. Scale bar: 20  $\mu$ m.

## Anti-Ribosomal Protein L13 Recombinant Rabbit Monoclonal Antibody

PAGE 3



Western blotting analysis using anti-Ribosomal protein L13 antibody (Cat#2424). Total cell lysates (30 µg) from various cell lines were loaded and separated by SDS-PAGE. The blot was incubated with anti-Ribosomal protein L13 antibody (Cat#2424, 1:5,000) and HRP-conjugated goat anti-rabbit secondary antibody (Cat#201, 1:20,000) respectively. Image was developed using FeQ™ ECL Substrate Kit (Cat#226).

### SUPPORT

SUPPORT@GENUINBIOTECH.COM  
TEL: +1-540-855-7041

### ORDERS

SALES@GENUINBIOTECH.COM  
FAX: +1-540-855-7041

[WWW.GENUINBIOTECH.COM](http://WWW.GENUINBIOTECH.COM)