

# Anti-Protein Kinase N2 Recombinant Rabbit Monoclonal Antibody



**Catalog #: 2425**

## Aliases

Protein Kinase N2; PRK2; Protein Kinase C-Like 2; PRKCL2; Pak-2; STK7; Cardiolipin-Activated Protein Kinase Pak2; Serine/Threonine-Protein Kinase N2; Protein-Kinase C-Related Kinase 2; EC 2.7.11.13; PKN Gamma; EC 2.7.11; PRO2042; PAK2

## Background

Gene Name: PKN2

NCBI Gene Entry: [5586](#)

UniProt Entry: [Q16513](#)

## Application Information

Molecular Weight: Predicted, 112 kDa; observed, 140 kDa

Clonality: Rabbit monoclonal antibody

Clone ID: 24GB775

Species Reactivity: Human, mouse, rat

Applications Tested: Western blotting (WB), flow cytometry (FCM), immunocytochemistry (IC)

## Immunogen

A synthesized peptide derived from human PKN2

## Isotype

Rabbit IgG

## Storage Buffer

Supplied in PBS (pH 7.4) containing 50% glycerol, and 0.02% sodium azide.

## Storage

Store at -20 °C for one year.

## Recommended Dilutions

Western Blotting (WB): 1:1,000-1:5,000

Flow Cytometry (FCM): 1:2,000

Immunocytochemistry (IC): 1:100-1:1,000

**Note:** This product is for research use only.

---

### SUPPORT

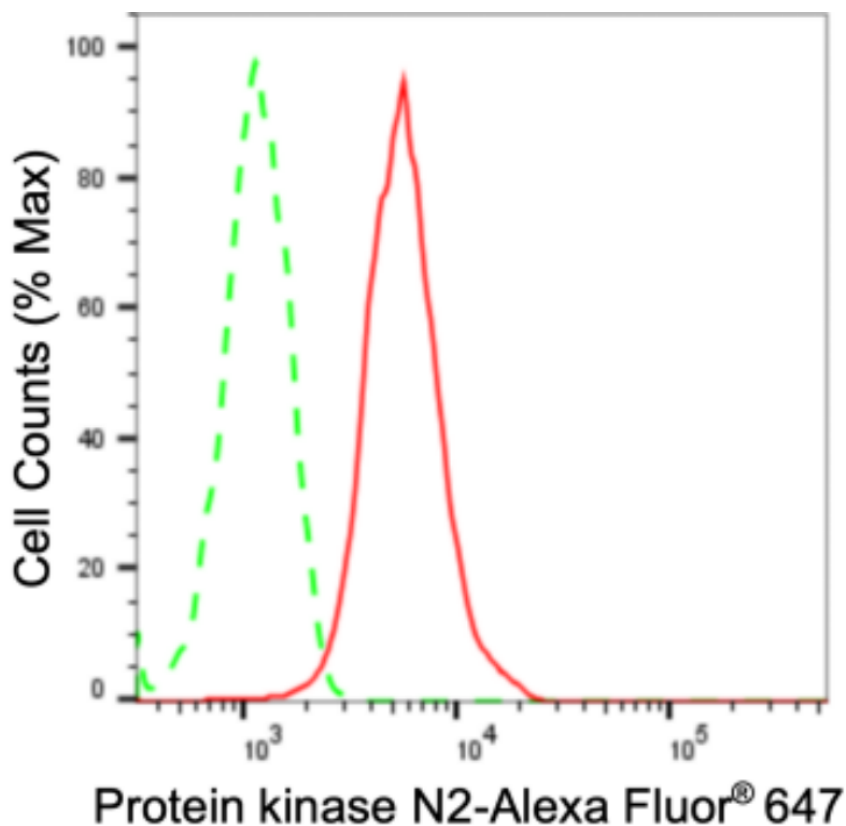
SUPPORT@GENUINBIOTECH.COM  
TEL: +1-540-855-7041

### ORDERS

SALES@GENUINBIOTECH.COM  
FAX: +1-540-855-7041

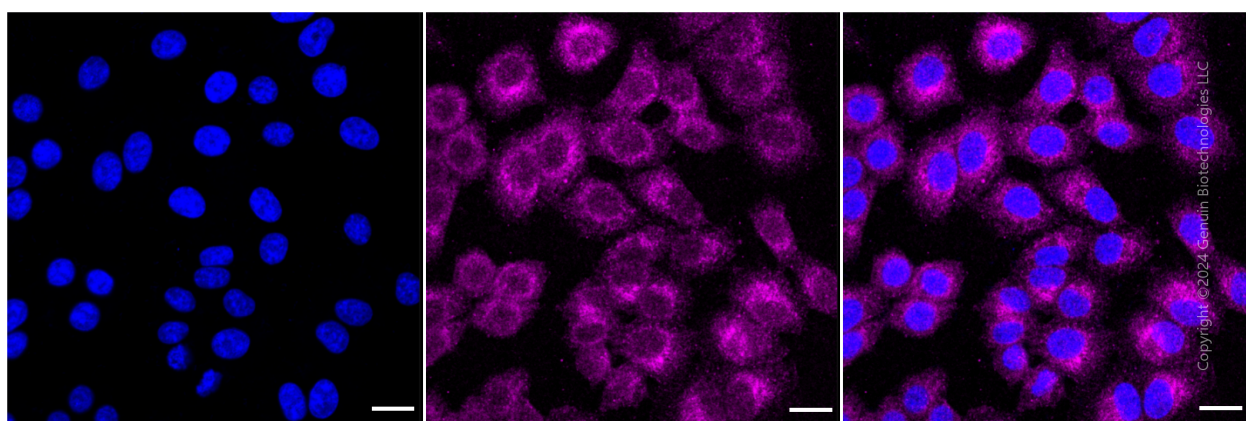
[WWW.GENUINBIOTECH.COM](http://WWW.GENUINBIOTECH.COM)

## Validation Data



Copyright ©2024 Genuin Biotechnologies LLC

Flow cytometric analysis of Protein kinase N2 expression in HepG2 cells using anti-Protein kinase N2 antibody (Cat#2425, 1:2,000). Green, isotype control; red, Protein kinase N2.



Copyright ©2024 Genuin Biotechnologies LLC

Immunocytochemical staining of HepG2 cells with anti-Protein kinase N2 antibody (Cat#2425, 1:1,000). Nuclei were stained blue with DAPI; Protein kinase N2 was stained magenta with Alexa Fluor® 647. Images were taken using Leica stellaris 5. Protein abundance based on laser Intensity and smart gain: Medium. Scale bar: 20 μm.

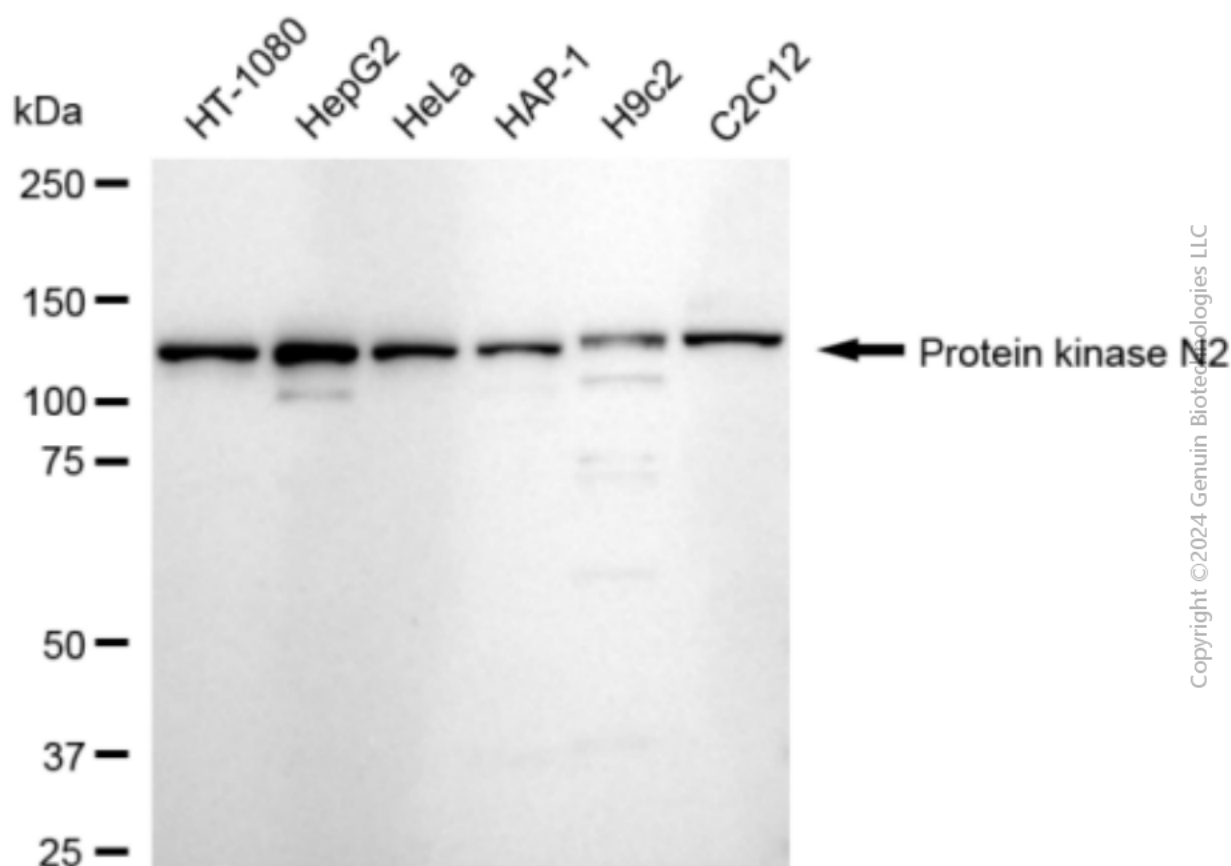
### SUPPORT

SUPPORT@GENUINBIOTECH.COM  
TEL: +1-540-855-7041

### ORDERS

SALES@GENUINBIOTECH.COM  
FAX: +1-540-855-7041

[WWW.GENUINBIOTECH.COM](http://WWW.GENUINBIOTECH.COM)



Copyright ©2024 Genuin Biotechnologies LLC

Western blotting analysis using anti-Protein kinase N2 antibody (Cat#2425). Total cell lysates (30  $\mu$ g) from various cell lines were loaded and separated by SDS-PAGE. The blot was incubated with anti-Protein kinase N2 antibody (Cat#2425, 1:5,000) and HRP-conjugated goat anti-rabbit secondary antibody (Cat#201, 1:20,000) respectively. Image was developed using FeQ™ ECL Substrate Kit (Cat#226).