

# Anti-Ribosomal Protein L26 Like 1 Recombinant Rabbit Monoclonal Antibody



**Catalog #: 2426**

## Aliases

Ribosomal Protein L26 Like 1; RPL26P1; Large Ribosomal Subunit Protein UL24-Like 1; Ribosomal Protein L26 Pseudogene 1; 60S Ribosomal Protein L26-Like 1; Ribosomal Protein UL24-Like; Ribosomal Protein L26 Homolog; Ribosomal Protein L26-Like 1

## Background

Gene Name: RPL26L1

NCBI Gene Entry: [51121](#)

UniProt Entry: [Q9UNX3](#)

## Application Information

Molecular Weight: Predicted, 17 kDa; observed, 17 kDa

Clonality: Rabbit monoclonal antibody

Clone ID: 24GB780

Species Reactivity: Human, mouse, rat

Applications Tested: Western blotting (WB), flow cytometry (FCM), immunocytochemistry (IC)

## Immunogen

A synthesized peptide derived from human RPL26L1

## Isotype

Rabbit IgG

## Storage Buffer

Supplied in PBS (pH 7.4) containing 50% glycerol, and 0.02% sodium azide.

## Storage

Store at -20 °C for one year.

## Recommended Dilutions

Western Blotting (WB): 1:1,000-1:5,000

Flow Cytometry (FCM): 1:2,000

Immunocytochemistry (IC): 1:100-1:1,000

**Note:** This product is for research use only.

---

### SUPPORT

SUPPORT@GENUINBIOTECH.COM  
TEL: +1-540-855-7041

### ORDERS

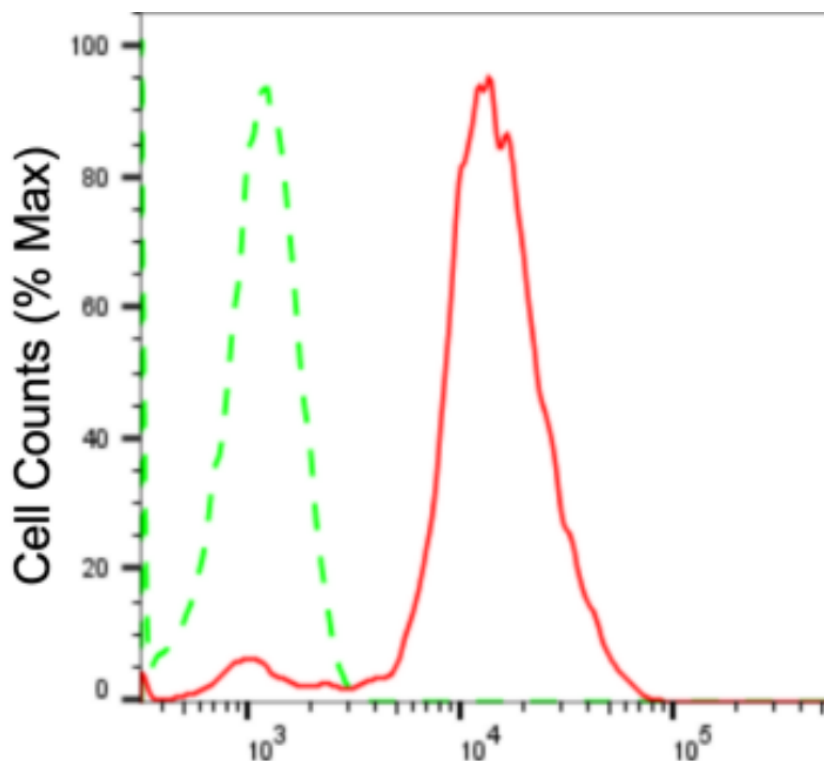
SALES@GENUINBIOTECH.COM  
FAX: +1-540-855-7041

[WWW.GENUINBIOTECH.COM](http://WWW.GENUINBIOTECH.COM)

# Anti-Ribosomal Protein L26 Like 1 Recombinant Rabbit Monoclonal Antibody

PAGE 2

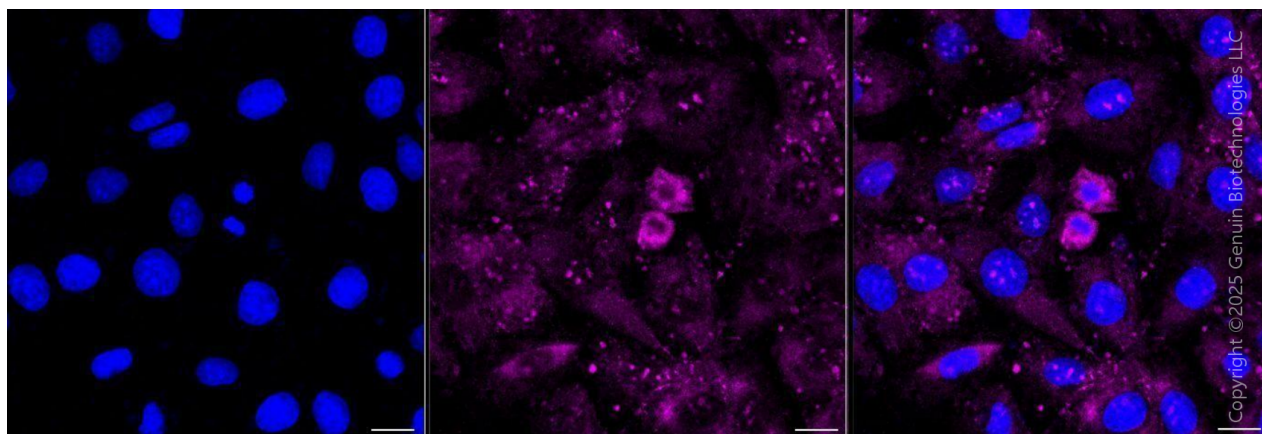
## Validation Data



Copyright ©2024 Genuin Biotechnologies LLC

### Ribosomal protein L26 like 1-Alexa Fluor® 647

Flow cytometric analysis of Ribosomal protein L26 like 1 expression in H9c2 cells using anti-Ribosomal protein L26 like 1 antibody (Cat#2426, 1:2,000). Green, isotype control; red, Ribosomal protein L26 like 1.



Copyright ©2025 Genuin Biotechnologies LLC

Immunocytochemical staining of H9c2 cells with anti-Ribosomal protein L26 like 1 antibody (Cat#2426, 1:1,000). Nuclei were stained blue with DAPI; Ribosomal protein L26 like 1 was stained magenta with Alexa Fluor® 647. Images were taken using Leica stellaris 5. Protein abundance based on laser Intensity and smart gain: Medium. Scale bar, 20  $\mu$ m.

## SUPPORT

SUPPORT@GENUINBIOTECH.COM  
TEL: +1-540-855-7041

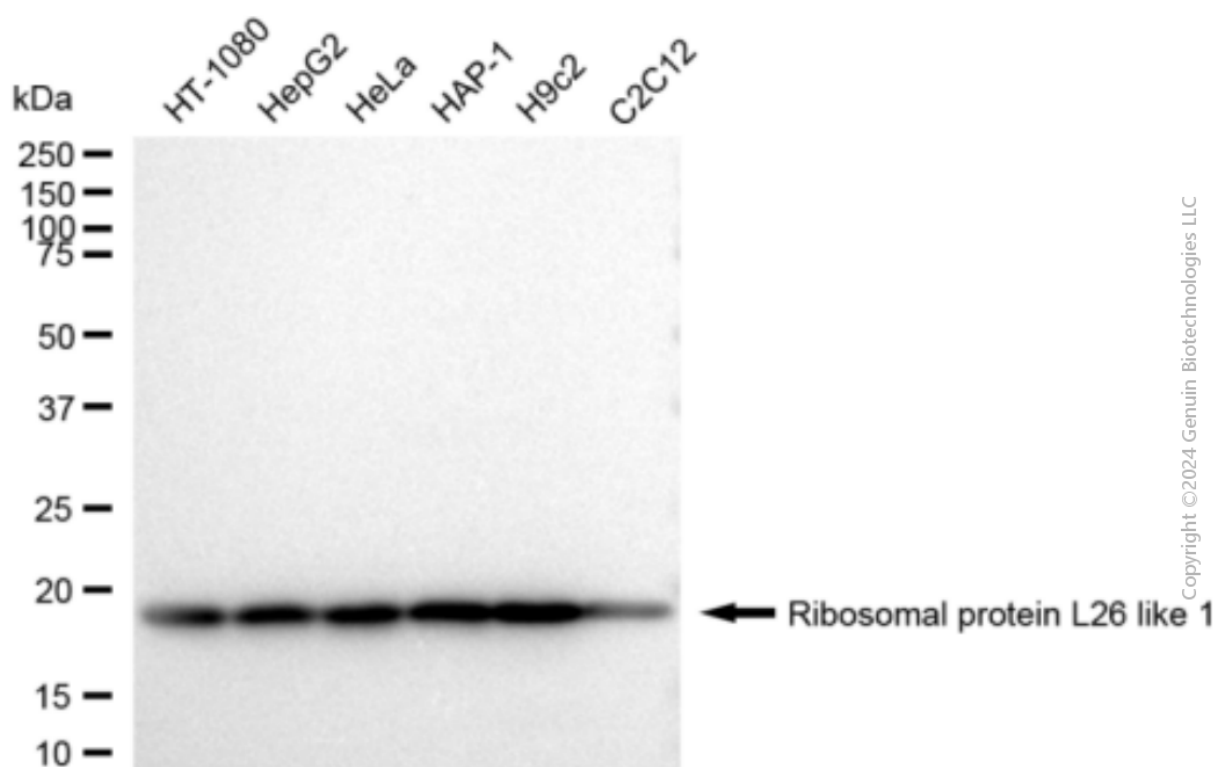
## ORDERS

SALES@GENUINBIOTECH.COM  
FAX: +1-540-855-7041

WWW.GENUINBIOTECH.COM

## Anti-Ribosomal Protein L26 Like 1 Recombinant Rabbit Monoclonal Antibody

PAGE 3



Western blotting analysis using anti-Ribosomal protein L26 like 1 antibody (Cat#2426). Total cell lysates (30  $\mu$ g) from various cell lines were loaded and separated by SDS-PAGE. The blot was incubated with anti-Ribosomal protein L26 like 1 antibody (Cat#2426, 1:5,000) and HRP-conjugated goat anti-rabbit secondary antibody (Cat#201, 1:20,000) respectively. Image was developed using FeQ™ ECL Substrate Kit (Cat#226).

### SUPPORT

SUPPORT@GENUINBIOTECH.COM  
TEL: +1-540-855-7041

### ORDERS

SALES@GENUINBIOTECH.COM  
FAX: +1-540-855-7041

[WWW.GENUINBIOTECH.COM](http://WWW.GENUINBIOTECH.COM)