

# Anti-Sterol Carrier Protein 2 Recombinant Rabbit Monoclonal Antibody



**Catalog #: 2428**

## Aliases

Sterol Carrier Protein 2; Non-Specific Lipid-Transfer Protein; Acetyl-CoA C-Myristoyltransferase; Propanoyl-CoA C-Acyltransferase; SCP-2/3-Oxoacyl-CoA Thiolase; Sterol Carrier Protein X; SCP-2/Thiolase; EC 2.3.1.176; NSL-TP; SCP-2; SCP-X; SCPX; Epididymis Secretory Sperm Binding Protein; Straight-Chain Acyl-CoA Oxidase; EC 2.3.1.155; EC 2.3.1.16; SCP-CHI; SCP-Chi; NLTP; SCOX

## Background

Gene Name: SCP2

NCBI Gene Entry: [6342](#)

UniProt Entry: [P22307](#)

## Application Information

Molecular Weight: Predicted, 59 kDa; observed, 58 kDa

Clonality: Rabbit monoclonal antibody

Clone ID: 24GB790

Species Reactivity: Human, mouse, rat

Applications Tested: Western blotting (WB), flow cytometry (FCM), immunocytochemistry (IC)

## Immunogen

A synthesized peptide derived from human Sterol carrier protein 2

## Isotype

Rabbit IgG

## Storage Buffer

Supplied in PBS (pH 7.4) containing 50% glycerol, and 0.02% sodium azide.

## Storage

Store at -20 °C for one year.

## Recommended Dilutions

Western Blotting (WB): 1:1,000-1:5,000

Flow Cytometry (FCM): 1:2,000

Immunocytochemistry (IC): 1:100-1:1,000

---

### SUPPORT

SUPPORT@GENUINBIOTECH.COM  
TEL: +1-540-855-7041

### ORDERS

SALES@GENUINBIOTECH.COM  
FAX: +1-540-855-7041

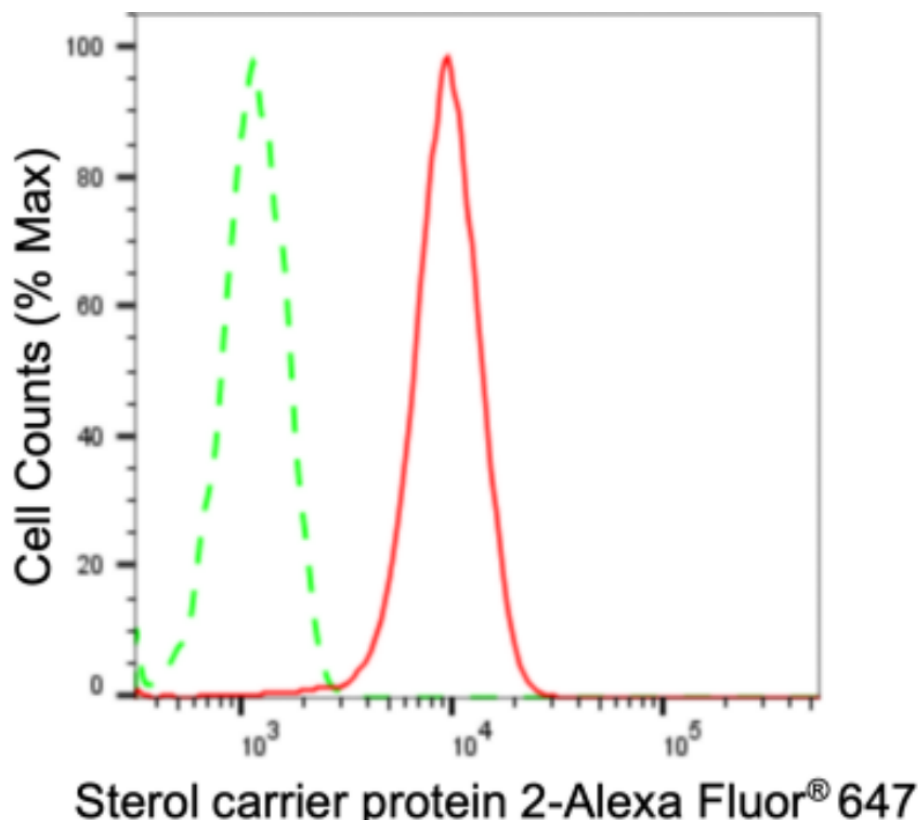
[WWW.GENUINBIOTECH.COM](http://WWW.GENUINBIOTECH.COM)

# Anti-Sterol Carrier Protein 2 Recombinant Rabbit Monoclonal Antibody

PAGE 2

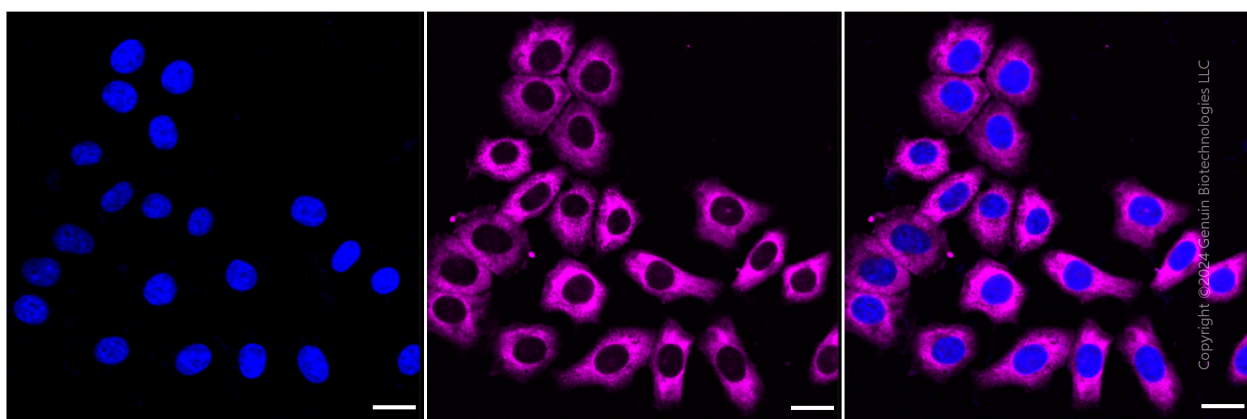
**Note:** This product is for research use only.

## Validation Data



Copyright ©2024 Genuin Biotechnologies LLC

Flow cytometric analysis of Sterol carrier protein 2 expression in HepG2 cells using anti-Sterol carrier protein 2 antibody (Cat#2428, 1:2,000). Green, isotype control; red, Sterol carrier protein 2.



Immunocytochemical staining of HepG2 cells with anti-Sterol carrier protein 2 antibody (Cat#2428, 1:1,000). Nuclei were stained blue with DAPI; Sterol carrier protein 2 was stained magenta with Alexa Fluor® 647. Images were taken using Leica stellaris 5. Protein abundance based on laser Intensity and smart gain: High. Scale bar: 20  $\mu$ m.

### SUPPORT

SUPPORT@GENUINBIOTECH.COM  
TEL: +1-540-855-7041

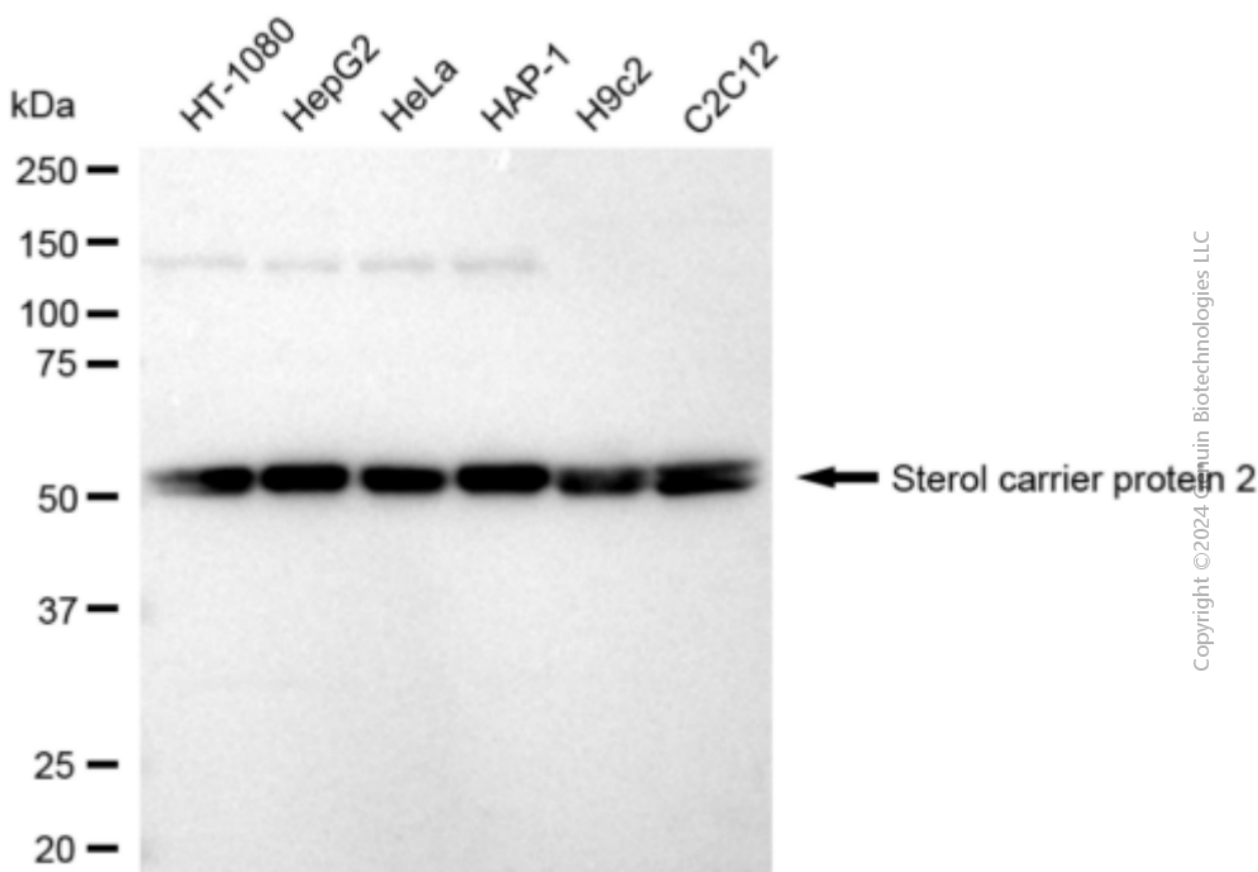
### ORDERS

SALES@GENUINBIOTECH.COM  
FAX: +1-540-855-7041

WWW.GENUINBIOTECH.COM

## Anti-Sterol Carrier Protein 2 Recombinant Rabbit Monoclonal Antibody

PAGE 3



Western blotting analysis using anti-Sterol carrier protein 2 antibody (Cat#2428). Total cell lysates (30 µg) from various cell lines were loaded and separated by SDS-PAGE. The blot was incubated with anti-Sterol carrier protein 2 antibody (Cat#2428, 1:5,000) and HRP-conjugated goat anti-rabbit secondary antibody (Cat#201, 1:20,000) respectively. Image was developed using FeQ™ ECL Substrate Kit (Cat#226).

### SUPPORT

SUPPORT@GENUINBIOTECH.COM  
TEL: +1-540-855-7041

### ORDERS

SALES@GENUINBIOTECH.COM  
FAX: +1-540-855-7041

[WWW.GENUINBIOTECH.COM](http://WWW.GENUINBIOTECH.COM)