

# Anti-RAB11A Recombinant Rabbit Monoclonal Antibody



**Catalog #: 2434**

## Aliases

RAB11A, Member RAS Oncogene Family; YL8; Ras-Related Protein Rab-11A; Rab-11; RAB11A, Member Oncogene Family; EC 3.6.5.2; RAB11

## Background

Gene Name: RAB11A

NCBI Gene Entry: [8766](#)

UniProt Entry: [P62491](#)

## Application Information

Molecular Weight: Predicted, 24 kDa; observed, 24 kDa

Clonality: Rabbit monoclonal antibody

Clone ID: 24GB820

Species Reactivity: Human, mouse, rat

Applications Tested: Western blotting (WB), flow cytometry (FCM), immunocytochemistry (IC)

## Immunogen

A synthesized peptide derived from human RAB11A

## Isotype

Rabbit IgG

## Storage Buffer

Supplied in PBS (pH 7.4) containing 50% glycerol, and 0.02% sodium azide.

## Storage

Store at -20 °C for one year.

## Recommended Dilutions

Western Blotting (WB): 1:1,000-1:5,000

Flow Cytometry (FCM): 1:2,000

Immunocytochemistry (IC): 1:100-1:1,000

**Note:** This product is for research use only.

## Validation Data

---

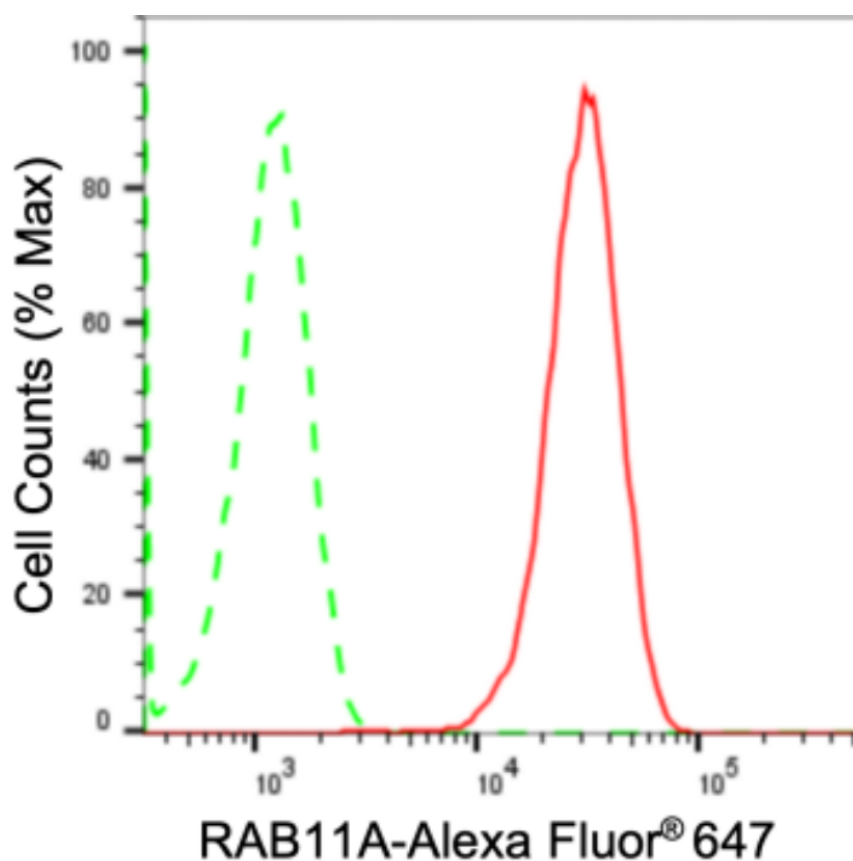
### SUPPORT

SUPPORT@GENUINBIOTECH.COM  
TEL: +1-540-855-7041

### ORDERS

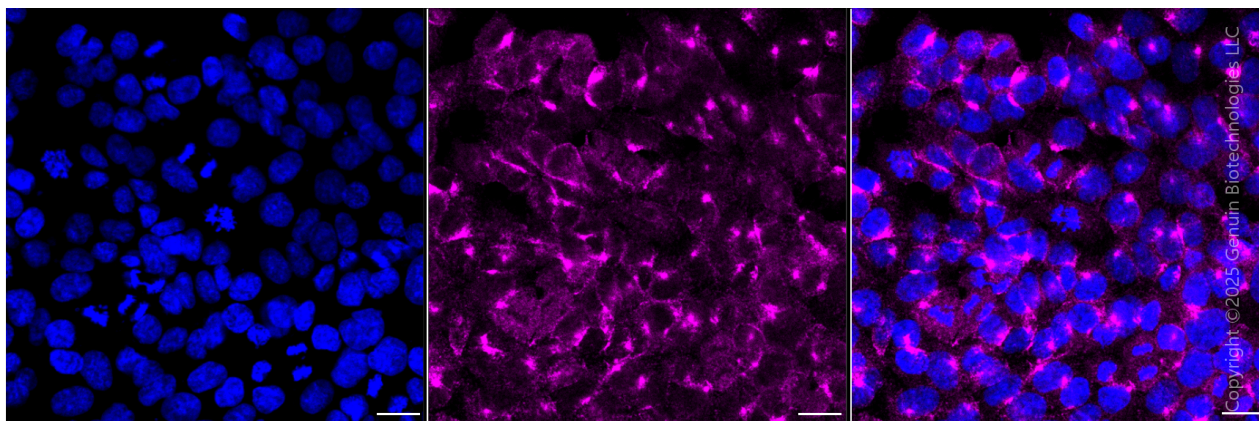
SALES@GENUINBIOTECH.COM  
FAX: +1-540-855-7041

[WWW.GENUINBIOTECH.COM](http://WWW.GENUINBIOTECH.COM)



Copyright ©2024 Genuin Biotechnologies LLC

Flow cytometric analysis of RAB11A expression in HAP-1 cells using anti-RAB11A antibody (Cat#2434, 1:2,000). Green, isotype control; red, RAB11A.



Copyright ©2025 Genuin Biotechnologies LLC

Immunocytochemical staining of HAP1 cells with anti-RAB11A antibody (Cat#2434, 1:1,000) . Nuclei were stained blue with DAPI; RAB11A was stained magenta with Alexa Fluor® 647. Images were taken using Leica stellaris 5. Protein abundance based on laser Intensity and smart gain: Medium. Scale bar, 20 µm.

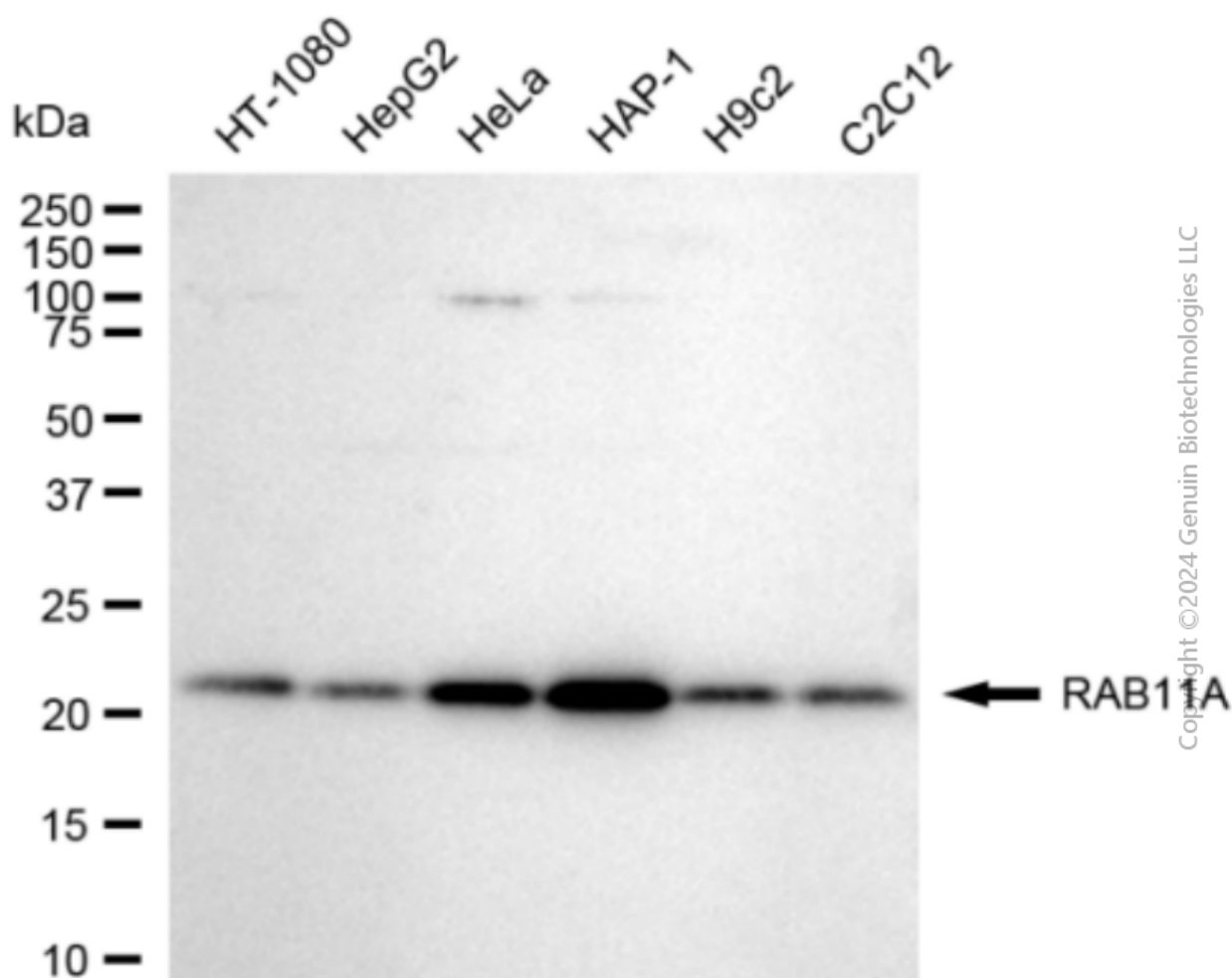
## SUPPORT

SUPPORT@GENUINBIOTECH.COM  
TEL: +1-540-855-7041

## ORDERS

SALES@GENUINBIOTECH.COM  
FAX: +1-540-855-7041

[WWW.GENUINBIOTECH.COM](http://WWW.GENUINBIOTECH.COM)



Western blotting analysis using anti-RAB11A antibody (Cat#2434). Total cell lysates (30  $\mu$ g) from various cell lines were loaded and separated by SDS-PAGE. The blot was incubated with anti-RAB11A antibody (Cat#2434, 1:5,000) and HRP-conjugated goat anti-rabbit secondary antibody (Cat#201, 1:20,000) respectively. Image was developed using FeQ™ ECL Substrate Kit (Cat#226).