

Anti-Raptor Recombinant Rabbit Monoclonal Antibody



Catalog #: 2441

Aliases

Regulatory Associated Protein Of MTOR Complex 1; Raptor; KIAA1303; KOG1; Mip1; Regulatory-Associated Protein Of MTOR; P150 Target Of Rapamycin (TOR)-Scaffold Protein Containing WD-Repeats; Regulatory Associated Protein Of MTOR, Complex 1; P150 Target Of Rapamycin (TOR)-Scaffold Protein; Regulatory Associated Protein Of MTOR; RAPTOR

Background

Gene Name: RPTOR

NCBI Gene Entry: [57521](#)

UniProt Entry: [Q8N122](#)

Application Information

Molecular Weight: Predicted, 149 kDa; observed, 149 kDa

Clonality: Rabbit monoclonal antibody

Clone ID: 24GB855

Species Reactivity: Human, mouse, rat

Applications Tested: Western blotting (WB), flow cytometry (FCM), immunocytochemistry (IC)

Immunogen

A synthesized peptide derived from human Raptor

Isotype

Rabbit IgG

Storage Buffer

Supplied in PBS (pH 7.4) containing 50% glycerol, and 0.02% sodium azide.

Storage

Store at -20 °C for one year.

Recommended Dilutions

Western Blotting (WB): 1:1,000-1:5,000

Flow Cytometry (FCM): 1:2,000

Immunocytochemistry (IC): 1:100-1:1,000

SUPPORT

SUPPORT@GENUINBIOTECH.COM
TEL: +1-540-855-7041

ORDERS

SALES@GENUINBIOTECH.COM
FAX: +1-540-855-7041

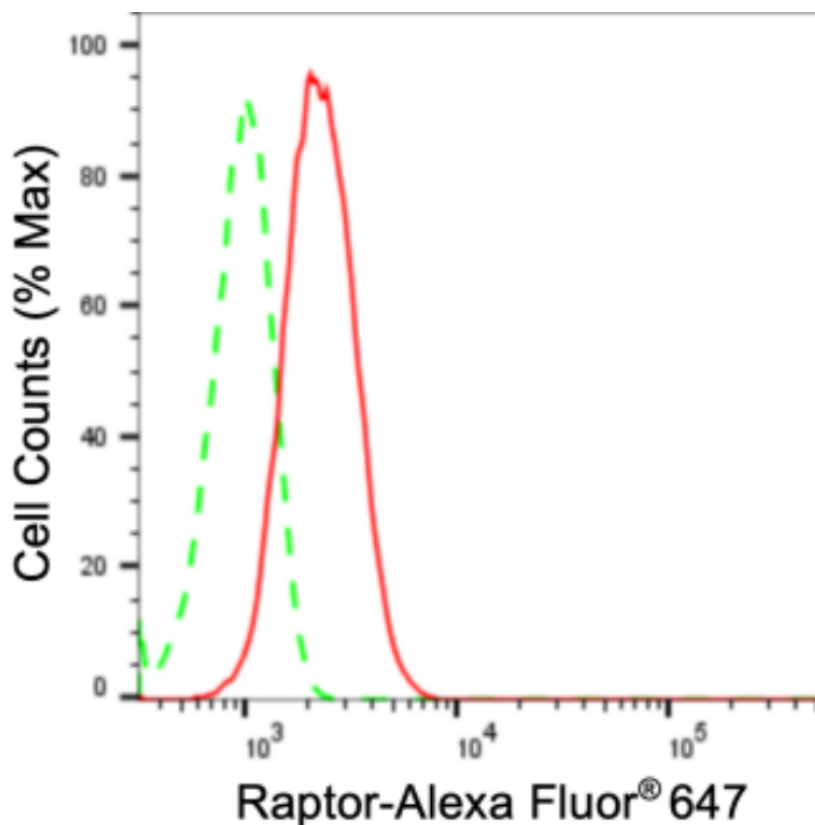
WWW.GENUINBIOTECH.COM

Anti-Raptor Recombinant Rabbit Monoclonal Antibody

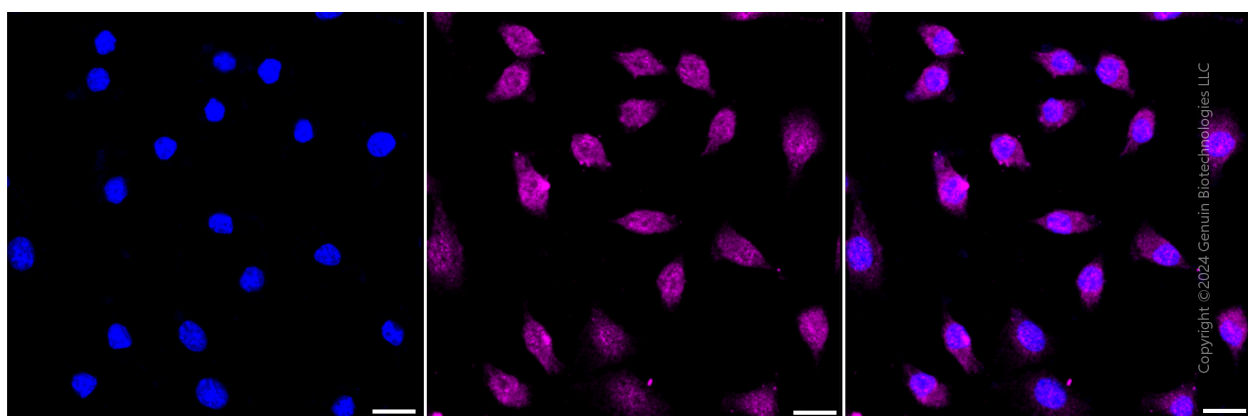
PAGE 2

Note: This product is for research use only.

Validation Data



Flow cytometric analysis of Raptor expression in C2C12 cells using anti-Raptor antibody (Cat#2441, 1:2,000). Green, isotype control; red, Raptor.



Immunocytochemical staining of C2C12 cells with anti-Raptor antibody (Cat#2441, 1:1,000). Nuclei were stained blue with DAPI; Raptor was stained magenta with Alexa Fluor® 647. Images were taken using Leica stellaris 5. Protein abundance based on laser Intensity and smart gain: Low. Scale bar: 20 μ m.

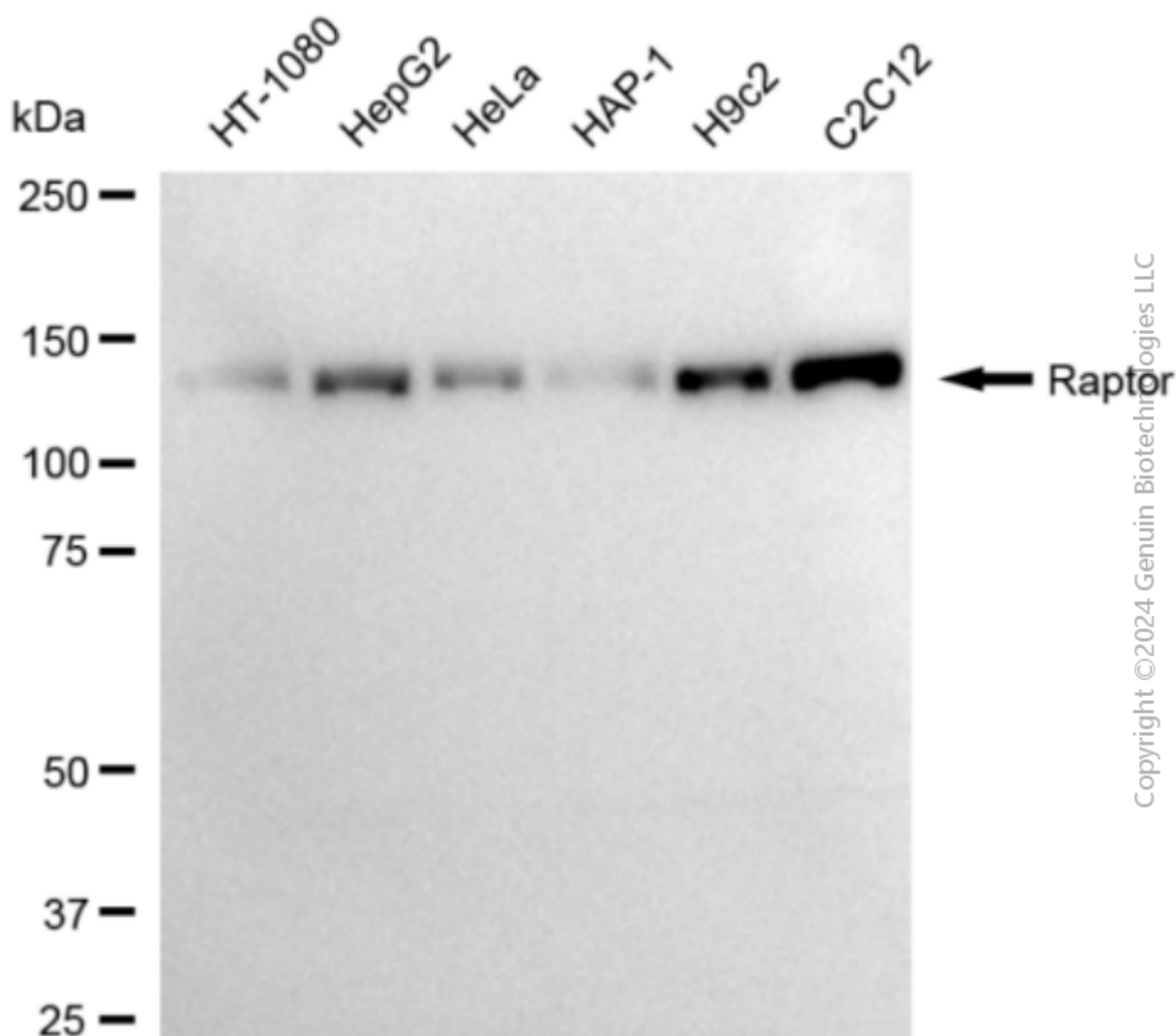
SUPPORT

SUPPORT@GENUINBIOTECH.COM
TEL: +1-540-855-7041

ORDERS

SALES@GENUINBIOTECH.COM
FAX: +1-540-855-7041

WWW.GENUINBIOTECH.COM



Western blotting analysis using anti-Raptor antibody (Cat#2441). Total cell lysates (30 μ g) from various cell lines were loaded and separated by SDS-PAGE. The blot was incubated with anti-Raptor antibody (Cat#2441, 1:5,000) and HRP-conjugated goat anti-rabbit secondary antibody (Cat#201, 1:20,000) respectively. Image was developed using FeQ™ ECL Substrate Kit (Cat#226).