

Anti-PDIA3 Recombinant Rabbit Monoclonal Antibody



Catalog #: 2454

Aliases

Protein Disulfide Isomerase Family A Member 3; ERp57; ERp60; P58; HsT17083; PI-PLC; ERp61; GRP57; GRP58; Endoplasmic Reticulum Resident Protein 57; Endoplasmic Reticulum Resident Protein 60; Protein Disulfide Isomerase-Associated 3; Glucose Regulated Protein, 58kDa; 58 KDa Glucose-Regulated Protein; Protein Disulfide-Isomerase A3; 58 KDa Microsomal Protein; Disulfide Isomerase ER-60; ER Protein 57; ER Protein 60; EC 5.3.4.1; Epididymis Secretory Sperm Binding Protein Li 93n; Protein Disulfide Isomerase Family A, Member 3; Epididymis Secretory Protein Li 269; Endoplasmic Reticulum P58; Phospholipase C-Alpha; HEL-S-269; HEL-S-93n; ERP57; ERP60; ER60

Background

Gene Name: PDIA3

NCBI Gene Entry: [2923](#)

UniProt Entry: [P30101](#)

Application Information

Molecular Weight: Predicted, 57 kDa; observed, 57 kDa

Clonality: Rabbit monoclonal antibody

Clone ID: 24GB915

Species Reactivity: Human

Applications Tested: Western blotting (WB), flow cytometry (FCM)

Immunogen

A synthesized peptide derived from human ERp57

Isotype

Rabbit IgG

Storage Buffer

Supplied in PBS (pH 7.4) containing 50% glycerol, and 0.02% sodium azide.

Storage

Store at -20 °C for one year.

Recommended Dilutions

Western Blotting (WB): 1:1,000-1:5,000

SUPPORT

SUPPORT@GENUINBIOTECH.COM
TEL: +1-540-855-7041

ORDERS

SALES@GENUINBIOTECH.COM
FAX: +1-540-855-7041

WWW.GENUINBIOTECH.COM

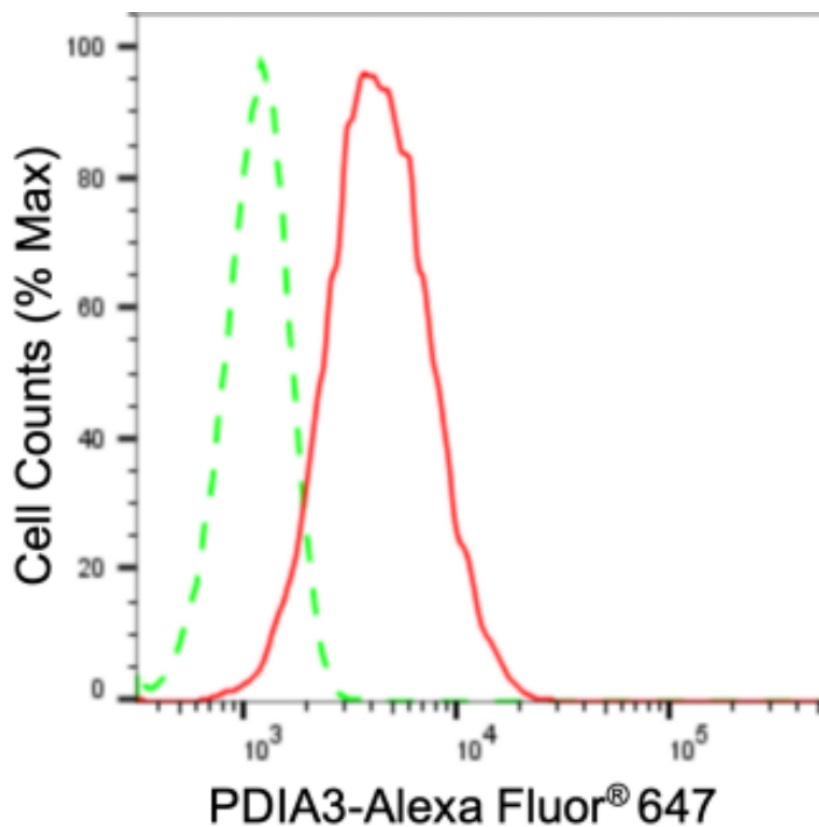
Anti-PDIA3 Recombinant Rabbit Monoclonal Antibody

PAGE 2

Flow Cytometry (FCM): 1:2,000

Note: This product is for research use only.

Validation Data



Copyright ©2024 Genuin Biotechnologies LLC

Flow cytometric analysis of PDIA3 expression in HeLa cells using PDIA3 antibody (Cat#2454, 1:2,000). Green, isotype control; red, PDIA3.

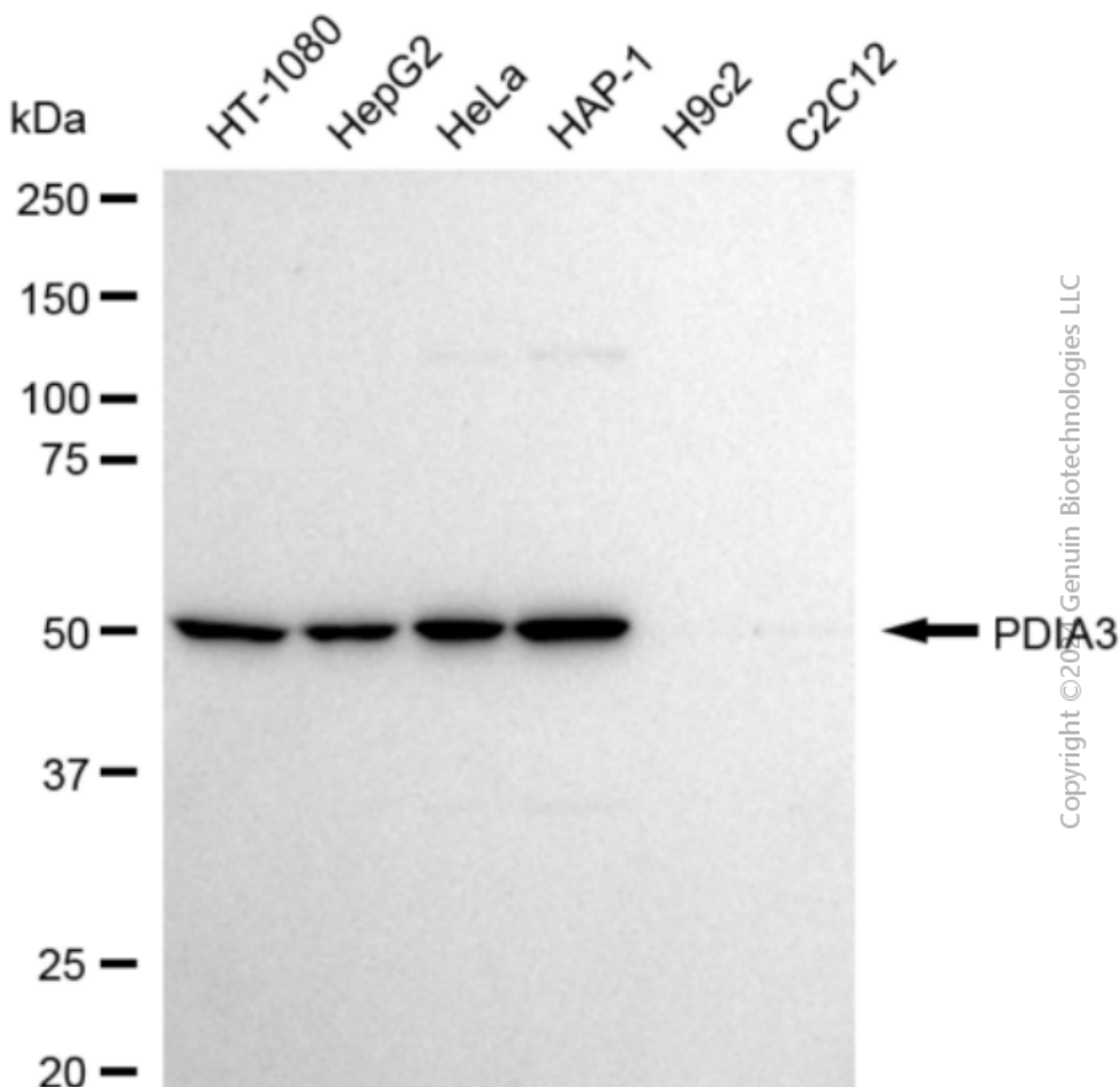
SUPPORT

SUPPORT@GENUINBIOTECH.COM
TEL: +1-540-855-7041

ORDERS

SALES@GENUINBIOTECH.COM
FAX: +1-540-855-7041

WWW.GENUINBIOTECH.COM



Western blotting analysis using anti-PDIA3 antibody (Cat#2454). Total cell lysates (30 µg) from various cell lines were loaded and separated by SDS-PAGE. The blot was incubated with anti-PDIA3 antibody (Cat#2454, 1:5,000) and HRP-conjugated goat anti-rabbit secondary antibody (Cat#201, 1:20,000) respectively. Image was developed using FeQ™ ECL Substrate Kit (Cat#226).