

Anti-PIAS1+PIAS2 Recombinant Rabbit Monoclonal Antibody



Catalog #: 2455

Aliases

Protein Inhibitor Of Activated STAT 1; GBP; GU/RH-II; DDXBP1; ZMIZ3; DEAD/H (Asp-Glu-Ala-Asp/His) Box Binding Protein 1; Protein Inhibitor Of Activated STAT Protein 1; Zinc Finger, MIZ-Type Containing 3; E3 SUMO-Protein Transferase PIAS1; RNA Helicase II-Binding Protein; E3 SUMO-Protein Ligase PIAS1; DEAD/H Box-Binding Protein 1; Gu-Binding Protein; AR Interacting Protein; EC 2.3.2.-; Protein Inhibitor Of Activated STAT 2; ARIP3; ZMIZ4; Androgen Receptor-Interacting Protein 3; Protein Inhibitor Of Activated STAT X; Msx-Interacting Zinc Finger Protein; Zinc Finger, MIZ-Type Containing 4; E3 SUMO-Protein Transferase PIAS2; E3 SUMO-Protein Ligase PIAS2; DAB2-Interacting Protein; PIASX-ALPHA; PIASX-BETA; PIASX; Miz; DIP; Protein Inhibitor Of Activated STAT2; PIAS-NY Protein; EC 2.3.2.-; MIZ1; SIZ2; Miz1

Background

Gene Name: PIAS1/ PIAS2

NCBI Gene Entry: [8554/9063](#)

UniProt Entry: [O75925/O75928](#)

Application Information

Molecular Weight: Predicted, 72,68 kDa; observed, 76 kDa

Clonality: Rabbit monoclonal antibody

Clone ID: 24GB920

Species Reactivity: Human, mouse, rat

Applications Tested: Western blotting (WB), flow cytometry (FCM), immunocytochemistry (IC)

Immunogen

A synthesized peptide derived from human PIAS1

Isotype

Rabbit IgG

Storage Buffer

Supplied in PBS (pH 7.4) containing 50% glycerol, and 0.02% sodium azide.

Storage

Store at -20 °C for one year.

SUPPORT

SUPPORT@GENUINBIOTECH.COM
TEL: +1-540-855-7041

ORDERS

SALES@GENUINBIOTECH.COM
FAX: +1-540-855-7041

WWW.GENUINBIOTECH.COM

Recommended Dilutions

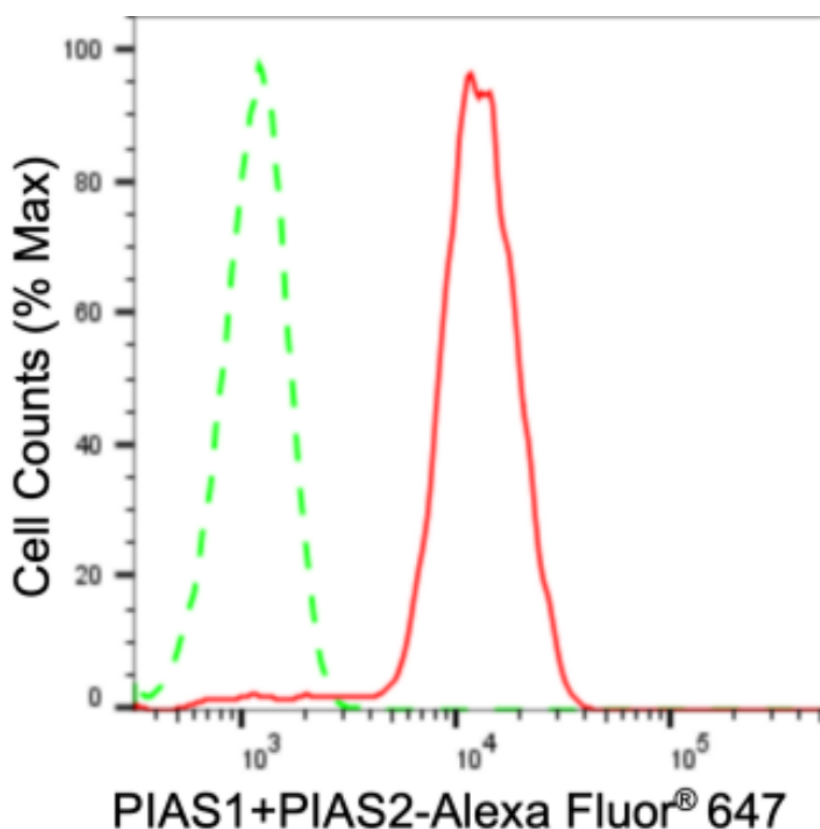
Western Blotting (WB): 1:1,000-1:5,000

Flow Cytometry (FCM): 1:2,000

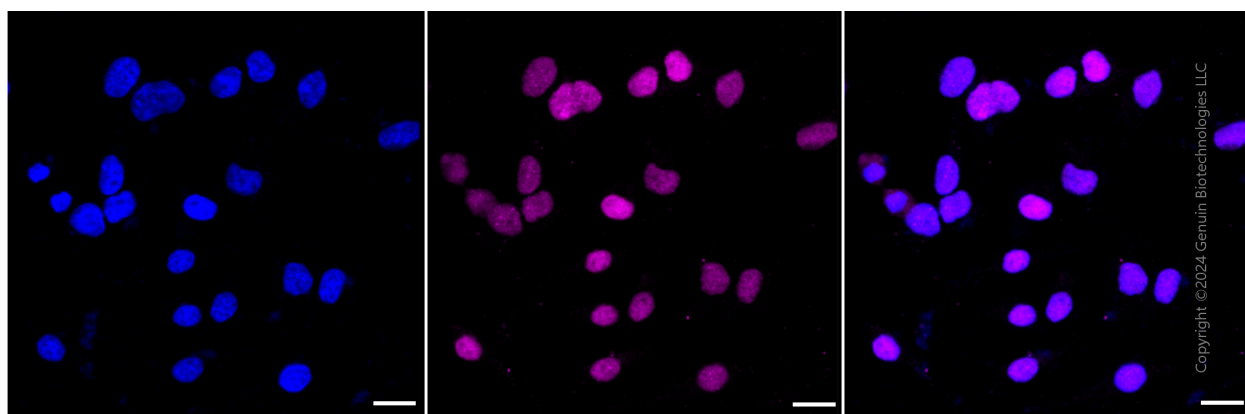
Immunocytochemistry (IC): 1:100-1:1,000

Note: This product is for research use only.

Validation Data



Copyright ©2024 Genuin Biotechnologies LLC



Copyright ©2024 Genuin Biotechnologies LLC

SUPPORT

SUPPORT@GENUINBIOTECH.COM
TEL: +1-540-855-7041

ORDERS

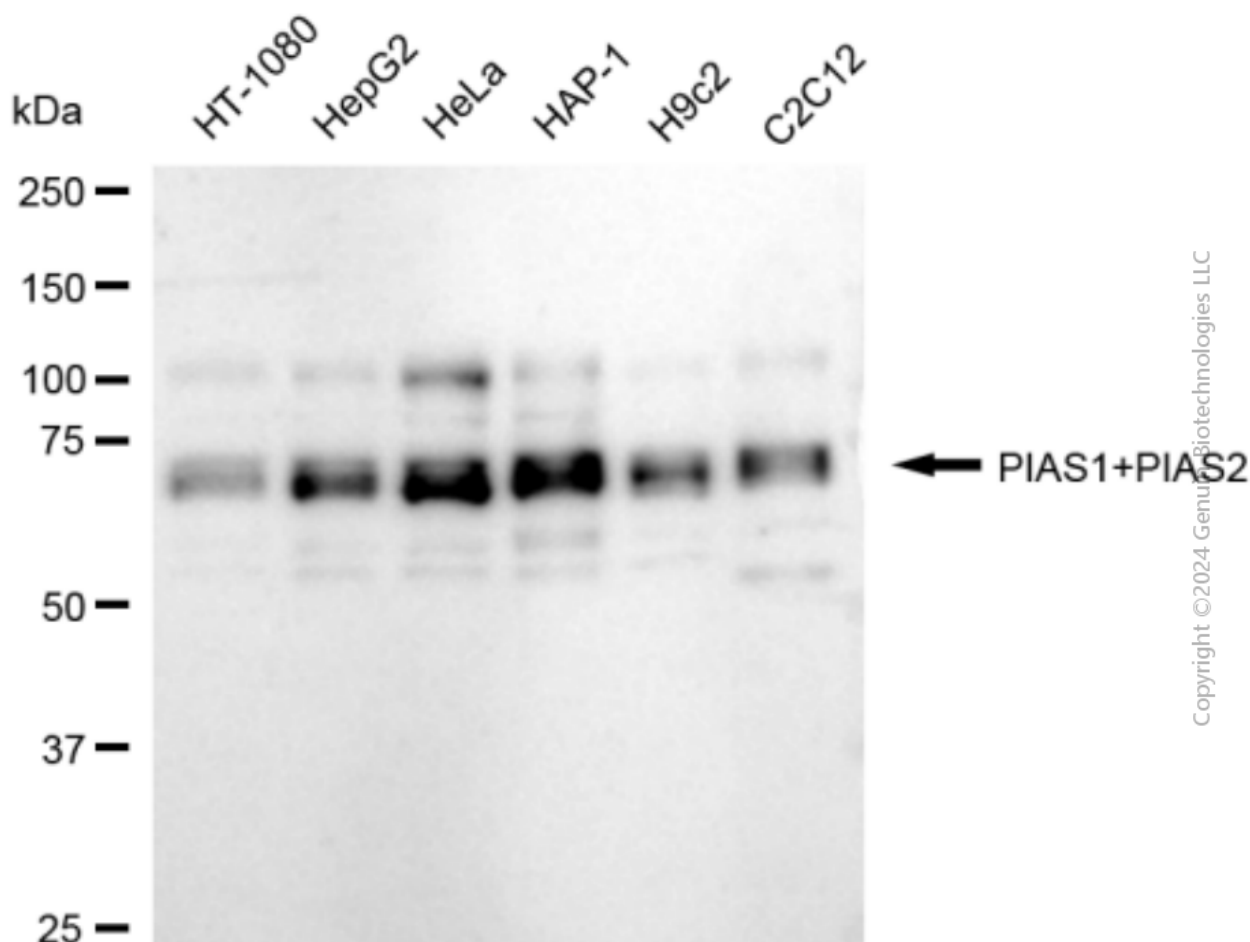
SALES@GENUINBIOTECH.COM
FAX: +1-540-855-7041

WWW.GENUINBIOTECH.COM

Anti-PIAS1+PIAS2 Recombinant Rabbit Monoclonal Antibody

PAGE 3

Immunocytochemical staining of Hela cells with anti-PIAS1+PIAS2 antibody (Cat#2455, 1:1,000). Nuclei were stained blue with DAPI; PIAS1+PIAS2 was stained magenta with Alexa Fluor® 647. Images were taken using Leica stellaris 5. Protein abundance based on laser Intensity and smart gain: Medium. Scale bar: 20 μ m.



Western blotting analysis using anti-PIAS1+PIAS2 antibody (Cat#2455). Total cell lysates (30 μ g) from various cell lines were loaded and separated by SDS-PAGE. The blot was incubated with anti-PIAS1+PIAS2 antibody (Cat#2455, 1:5,000) and HRP-conjugated goat anti-rabbit secondary antibody (Cat#201, 1:20,000) respectively. Image was developed using FeQ™ ECL Substrate Kit (Cat#226).

SUPPORT

SUPPORT@GENUINBIOTECH.COM
TEL: +1-540-855-7041

ORDERS

SALES@GENUINBIOTECH.COM
FAX: +1-540-855-7041

WWW.GENUINBIOTECH.COM