

# Anti-Ran Recombinant Rabbit Monoclonal Antibody



**Catalog #: 2459**

## Aliases

RAN, Member RAS Oncogene Family; ARA24; Gsp1; TC4; Androgen Receptor-Associated Protein 24; GTP-Binding Nuclear Protein Ran; Ras-Related Nuclear Protein; Ras-Like Protein TC4; GTPase Ran; Guanosine Triphosphatase Ran; Member RAS Oncogene Family; EC 3.6.5.-; RanGTPase

## Background

Gene Name: RAN

NCBI Gene Entry: [5901](#)

UniProt Entry: [P62826](#)

## Application Information

Molecular Weight: Predicted, 24 kDa; observed, 24 kDa

Clonality: Rabbit monoclonal antibody

Clone ID: 24GB940

Species Reactivity: Human, mouse, rat

Applications Tested: Western blotting (WB), flow cytometry (FCM), immunocytochemistry (IC)

## Immunogen

A synthesized peptide derived from human Ran

## Isotype

Rabbit IgG

## Storage Buffer

Supplied in PBS (pH 7.4) containing 50% glycerol, and 0.02% sodium azide.

## Storage

Store at -20 °C for one year.

## Recommended Dilutions

Western Blotting (WB): 1:1,000-1:5,000

Flow Cytometry (FCM): 1:2,000

Immunocytochemistry (IC): 1:100-1:1,000

---

### SUPPORT

SUPPORT@GENUINBIOTECH.COM  
TEL: +1-540-855-7041

### ORDERS

SALES@GENUINBIOTECH.COM  
FAX: +1-540-855-7041

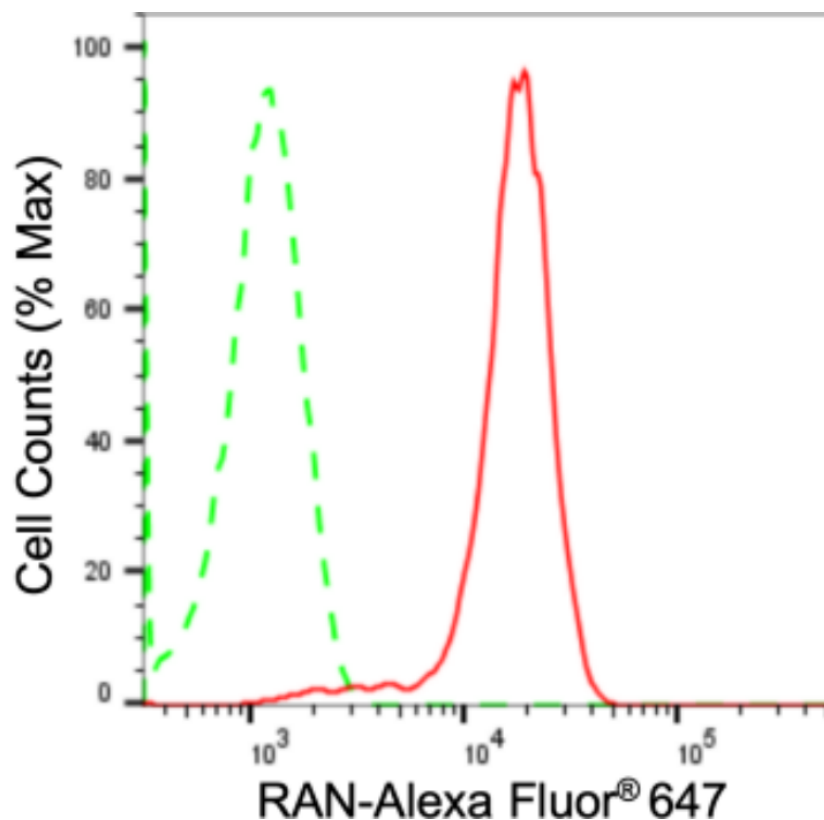
[WWW.GENUINBIOTECH.COM](http://WWW.GENUINBIOTECH.COM)

# Anti-RAN Recombinant Rabbit Monoclonal Antibody

PAGE 2

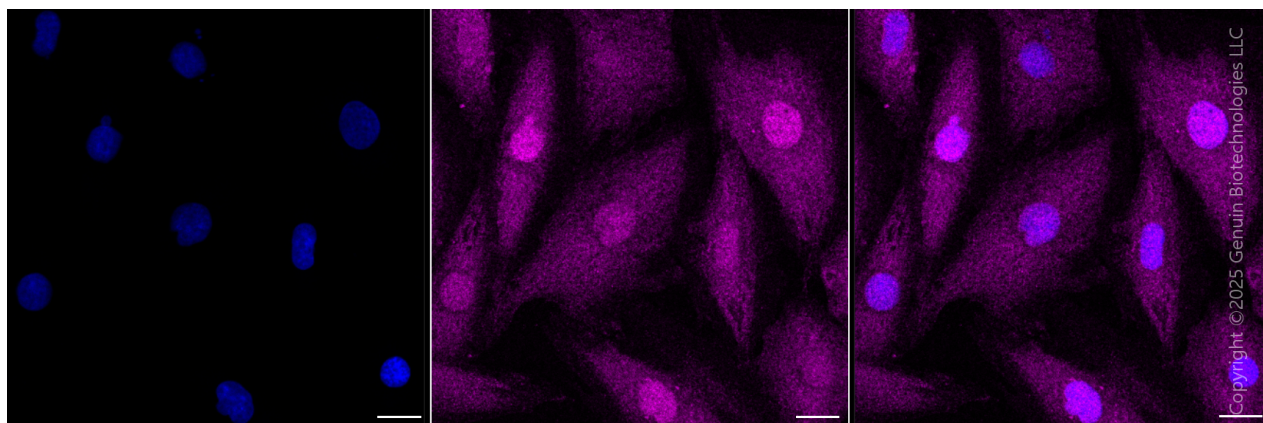
**Note:** This product is for research use only.

## Validation Data



Copyright ©2024 Genuin Biotechnologies LLC

Flow cytometric analysis of RAN expression in H9c2 cells using anti-RAN antibody (Cat#2459, 1:2,000). Green, isotype control; red, RAN.



Copyright ©2025 Genuin Biotechnologies LLC

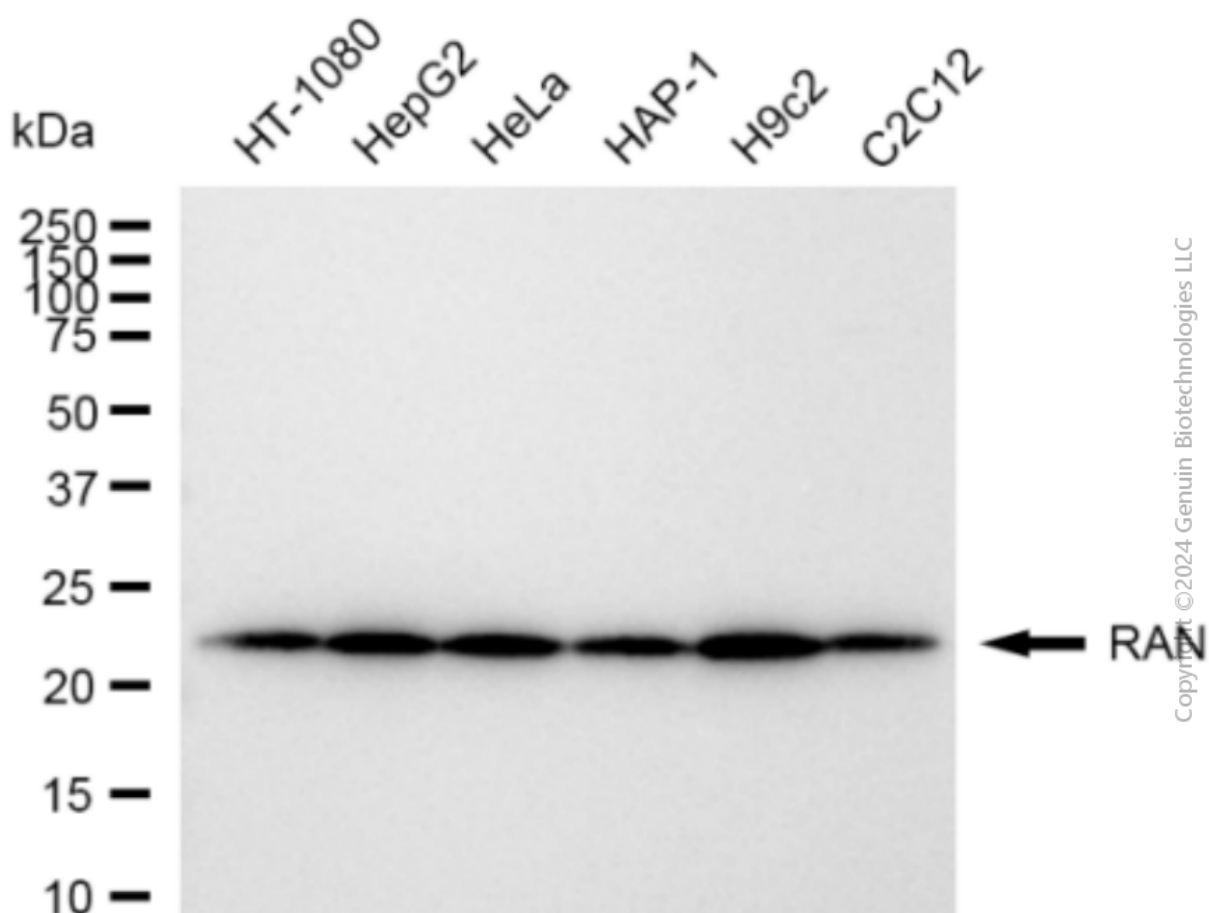
### SUPPORT

SUPPORT@GENUINBIOTECH.COM  
TEL: +1-540-855-7041

### ORDERS

SALES@GENUINBIOTECH.COM  
FAX: +1-540-855-7041

[WWW.GENUINBIOTECH.COM](http://WWW.GENUINBIOTECH.COM)



Western blotting analysis using anti-RAN antibody (Cat#2459). Total cell lysates (30  $\mu$ g) from various cell lines were loaded and separated by SDS-PAGE. The blot was incubated with anti-RAN antibody (Cat#2459, 1:5,000) and HRP-conjugated goat anti-rabbit secondary antibody (Cat#201, 1:20,000) respectively. Image was developed using FeQ™ ECL Substrate Kit (Cat#226).