

Anti-PHD Finger Protein 8 Recombinant Rabbit Monoclonal Antibody



Catalog #: 2460

Aliases

PHD Finger Protein 8; ZNF422; Histone Lysine Demethylase PHF8; KIAA1111; JHDM1F; KDM7B; [Histone H3]-Dimethyl-L-Lysine(36) Demethylase PHF8; Jumonji C Domain-Containing Histone Demethylase 1F; [Histone H3]-Dimethyl-L-Lysine(9) Demethylase PHF8; Zinc Finger Protein 422; Lysine Demethylase 7B; EC 1.14.11.27; EC 1.14.11.65; MRXSSD

Background

Gene Name: PHF8

NCBI Gene Entry: [23133](#)

UniProt Entry: [Q9UPP1](#)

Application Information

Molecular Weight: Predicted, 118 kDa; observed, 140 kDa

Clonality: Rabbit monoclonal antibody

Clone ID: 24GB945

Species Reactivity: Human, mouse, rat

Applications Tested: Western blotting (WB), flow cytometry (FCM), immunocytochemistry (IC)

Immunogen

A synthesized peptide derived from human PHF8

Isotype

Rabbit IgG

Storage Buffer

Supplied in PBS (pH 7.4) containing 50% glycerol, and 0.02% sodium azide.

Storage

Store at -20 °C for one year.

Recommended Dilutions

Western Blotting (WB): 1:1,000-1:5,000

Flow Cytometry (FCM): 1:2,000

Immunocytochemistry (IC): 1:100-1:1,000

SUPPORT

SUPPORT@GENUINBIOTECH.COM
TEL: +1-540-855-7041

ORDERS

SALES@GENUINBIOTECH.COM
FAX: +1-540-855-7041

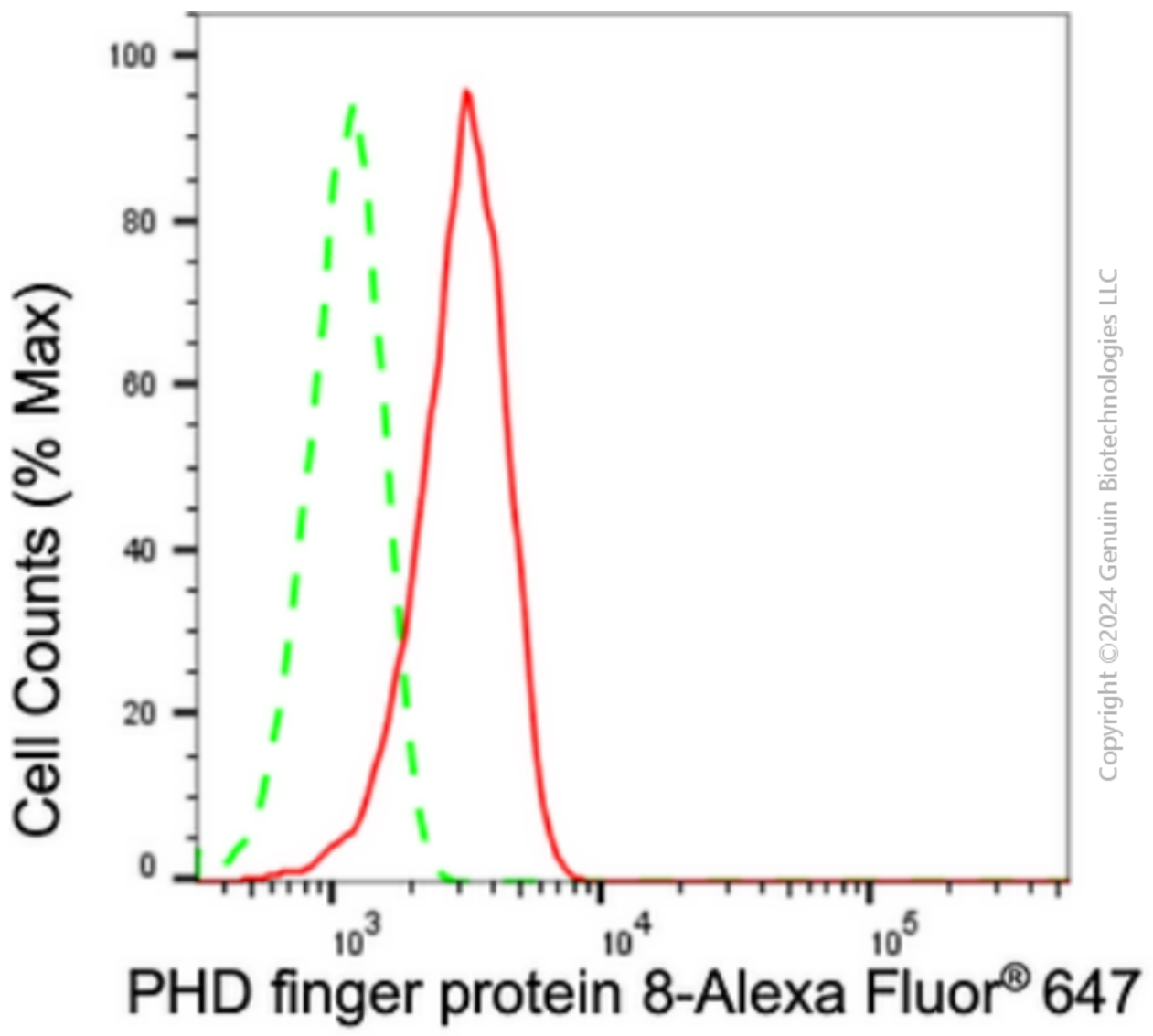
WWW.GENUINBIOTECH.COM

Anti-PHD Finger Protein 8 Recombinant Rabbit Monoclonal Antibody

PAGE 2

Note: This product is for research use only.

Validation Data



Flow cytometric analysis of PHD finger protein 8 expression in HepG2 cells using anti-PHD finger protein 8 antibody (Cat#2460, 1:2,000). Green, isotype control; red, PHD finger protein 8.

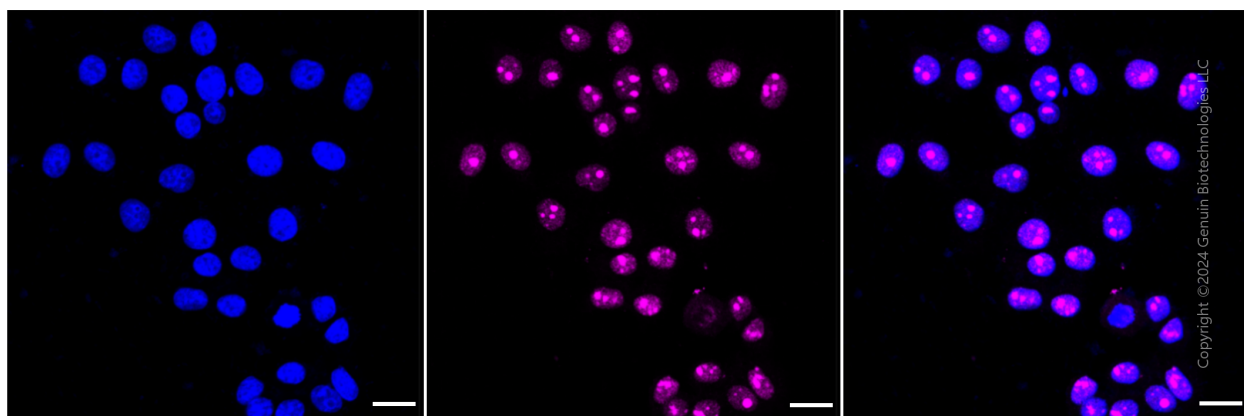
SUPPORT

SUPPORT@GENUINBIOTECH.COM
TEL: +1-540-855-7041

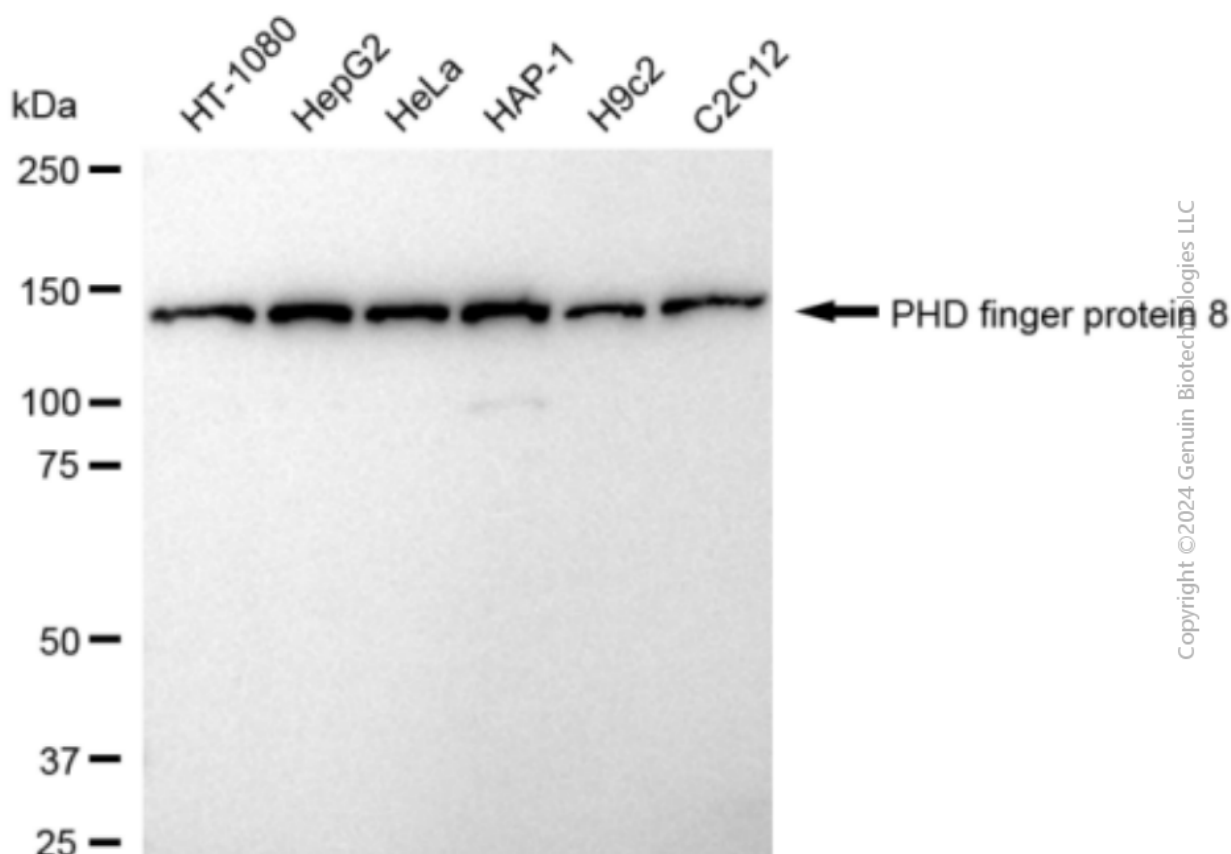
ORDERS

SALES@GENUINBIOTECH.COM
FAX: +1-540-855-7041

WWW.GENUINBIOTECH.COM



Immunocytochemical staining of HepG2 cells with anti-PHD finger protein 8 antibody (Cat#2460, 1:1,000). Nuclei were stained blue with DAPI; PHD finger protein 8 was stained magenta with Alexa Fluor® 647. Images were taken using Leica stellaris 5. Protein abundance based on laser Intensity and smart gain: High. Scale bar: 20 µm.



Western blotting analysis using anti-PHD finger protein 8 antibody (Cat#2460). Total cell lysates (30 µg) from various cell lines were loaded and separated by SDS-PAGE. The blot was incubated with anti-PHD finger protein 8 antibody (Cat#2460, 1:5,000) and HRP-conjugated goat anti-rabbit secondary antibody (Cat#201, 1:20,000) respectively. Image was developed using FeQ™ ECL

SUPPORT

SUPPORT@GENUINBIOTECH.COM
TEL: +1-540-855-7041

ORDERS

SALES@GENUINBIOTECH.COM
FAX: +1-540-855-7041

WWW.GENUINBIOTECH.COM

Anti-PHD Finger Protein 8 Recombinant Rabbit Monoclonal Antibody

PAGE 4

Substrate Kit (Cat#226).

SUPPORT

SUPPORT@GENUINBIOTECH.COM
TEL: +1-540-855-7041

ORDERS

SALES@GENUINBIOTECH.COM
FAX: +1-540-855-7041

WWW.GENUINBIOTECH.COM