

# Anti-Ring-Box 1 Recombinant Rabbit Monoclonal Antibody



**Catalog #: 2461**

## Aliases

Ring-Box 1; RNF75; ROC1; Regulator Of Cullins 1; BA554C12.1; E3 Ubiquitin-Protein Transferase RBX1; E3 Ubiquitin-Protein Ligase RBX1; RING Finger Protein 75; RING-Box Protein 1; Ring-Box 1, E3 Ubiquitin Protein Ligase; ZYP Protein; Protein ZYP; EC 2.3.2.27; EC 2.3.2.32; Rbx1

## Background

Gene Name: RBX1

NCBI Gene Entry: [9978](#)

UniProt Entry: [P62877](#)

## Application Information

Molecular Weight: Predicted, 12 kDa; observed, 15 kDa

Clonality: Rabbit monoclonal antibody

Clone ID: 24GB950

Species Reactivity: Human, mouse, rat

Applications Tested: Western blotting (WB), flow cytometry (FCM), immunocytochemistry (IC)

## Immunogen

A synthesized peptide derived from human ROC1

## Isotype

Rabbit IgG

## Storage Buffer

Supplied in PBS (pH 7.4) containing 50% glycerol, and 0.02% sodium azide.

## Storage

Store at -20 °C for one year.

## Recommended Dilutions

Western Blotting (WB): 1:1,000-1:5,000

Flow Cytometry (FCM): 1:2,000

Immunocytochemistry (IC): 1:100-1:1,000

---

### SUPPORT

SUPPORT@GENUINBIOTECH.COM  
TEL: +1-540-855-7041

### ORDERS

SALES@GENUINBIOTECH.COM  
FAX: +1-540-855-7041

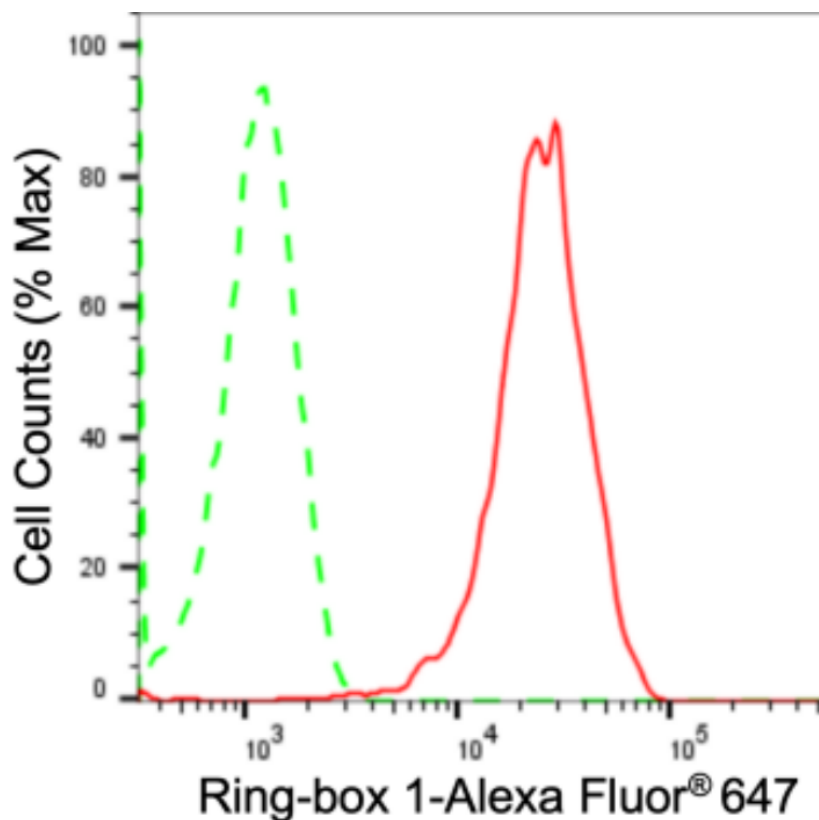
[WWW.GENUINBIOTECH.COM](http://WWW.GENUINBIOTECH.COM)

# Anti-Ring-Box 1 Recombinant Rabbit Monoclonal Antibody

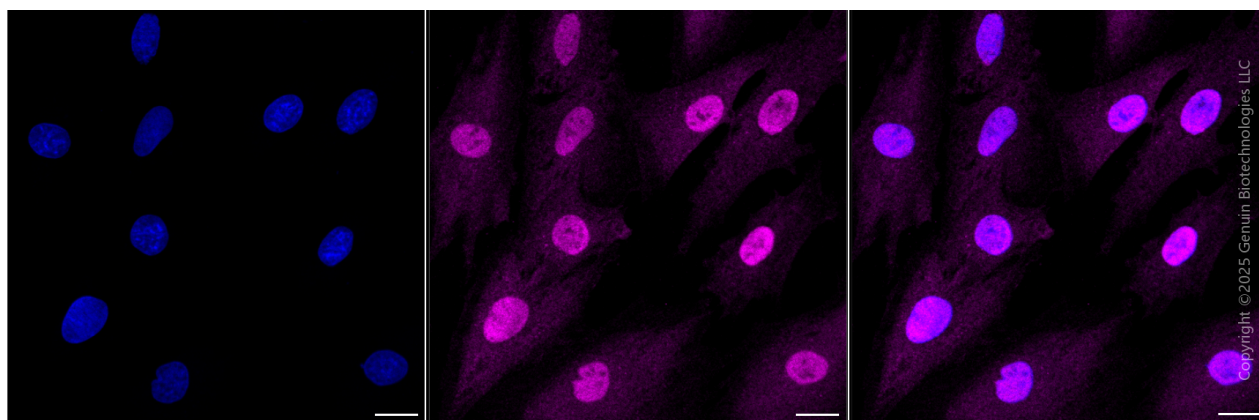
PAGE 2

**Note:** This product is for research use only.

## Validation Data



Flow cytometric analysis of Ring-box 1 expression in H9c2 cells using anti-Ring-box 1 antibody (Cat#2461, 1:2,000). Green, isotype control; red, Ring-box 1.



Immunocytochemical staining of H9C2 cells with anti-Ring-box 1 antibody (Cat#2461, 1:1,000) . Nuclei were stained blue with DAPI;Ring-box 1 was stained magenta with Alexa Fluor® 647. Images were taken using Leica stellaris 5. Protein abundance based on laser Intensity and smart gain: High. Scale bar, 20  $\mu$ m.

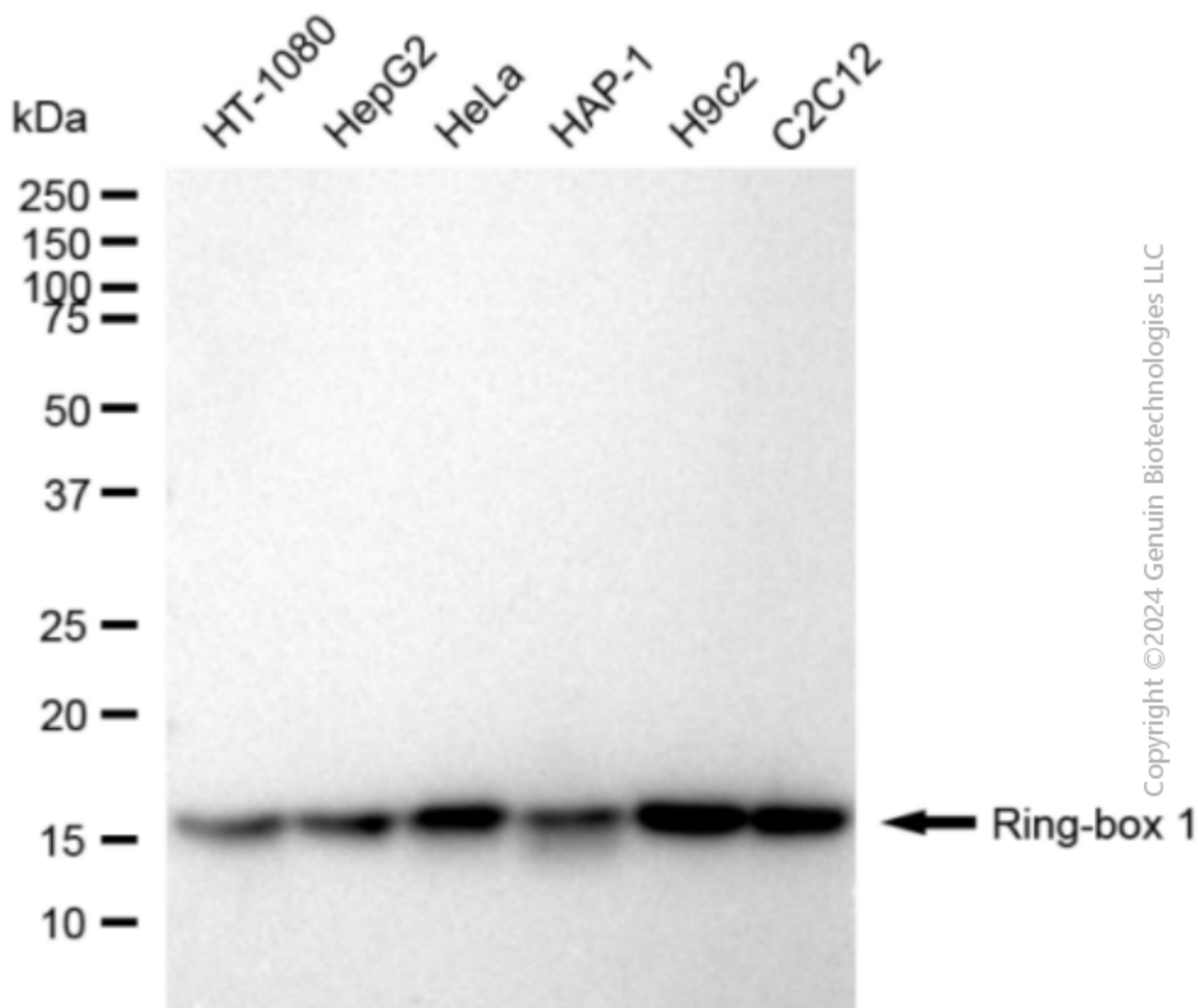
### SUPPORT

SUPPORT@GENUINBIOTECH.COM  
TEL: +1-540-855-7041

### ORDERS

SALES@GENUINBIOTECH.COM  
FAX:+1-540-855-7041

[WWW.GENUINBIOTECH.COM](http://WWW.GENUINBIOTECH.COM)



Western blotting analysis using anti-Ring-box 1 antibody (Cat#2461). Total cell lysates (30 µg) from various cell lines were loaded and separated by SDS-PAGE. The blot was incubated with anti-Ring-box 1 antibody (Cat#2461, 1:5,000) and HRP-conjugated goat anti-rabbit secondary antibody (Cat#201, 1:20,000) respectively. Image was developed using FeQ™ ECL Substrate Kit (Cat#226).