

Anti-Ribosomal Protein S6 Kinase B1 Recombinant Rabbit Monoclonal Antibody



Catalog #: 2474

Aliases

Ribosomal Protein S6 Kinase B1; S6K1; P70(S6K)-Alpha; STK14A; PS6K; S6K; Serine/Threonine-Protein Kinase 14A; Ribosomal Protein S6 Kinase Beta-1; Ribosomal Protein S6 Kinase I; EC 2.7.11.1; S6K-Beta-1; P70 S6KA; Ribosomal Protein S6 Kinase, 70kDa, Polypeptide 1; Ribosomal Protein S6 Kinase, 70kD, Polypeptide 1; 70 KDa Ribosomal Protein S6 Kinase 1; Serine/Threonine Kinase 14 Alpha; P70 Ribosomal S6 Kinase Alpha; P70 S6 Kinase Alpha; P70 S6K-Alpha; P70-Alpha; P70-S6K 1; EC 2.7.11; P70-S6K; P70S6K1

Background

Gene Name: RPS6KB1

NCBI Gene Entry: [6198](#)

UniProt Entry: [P23443](#)

Application Information

Molecular Weight: Predicted, 59 kDa; observed, 70 kDa

Clonality: Rabbit monoclonal antibody

Clone ID: 24GB1015

Species Reactivity: Human, mouse, rat

Applications Tested: Western blotting (WB), flow cytometry (FCM), immunocytochemistry (IC)

Immunogen

A synthesized peptide derived from human P70 S6 Kinase alpha

Isotype

Rabbit IgG

Storage Buffer

Supplied in PBS (pH 7.4) containing 50% glycerol, and 0.02% sodium azide.

Storage

Store at -20 °C for one year.

Recommended Dilutions

Western Blotting (WB): 1:1,000-1:5,000

Flow Cytometry (FCM): 1:2,000

Immunocytochemistry (IC): 1:100-1:1,000

SUPPORT

SUPPORT@GENUINBIOTECH.COM
TEL: +1-540-855-7041

ORDERS

SALES@GENUINBIOTECH.COM
FAX: +1-540-855-7041

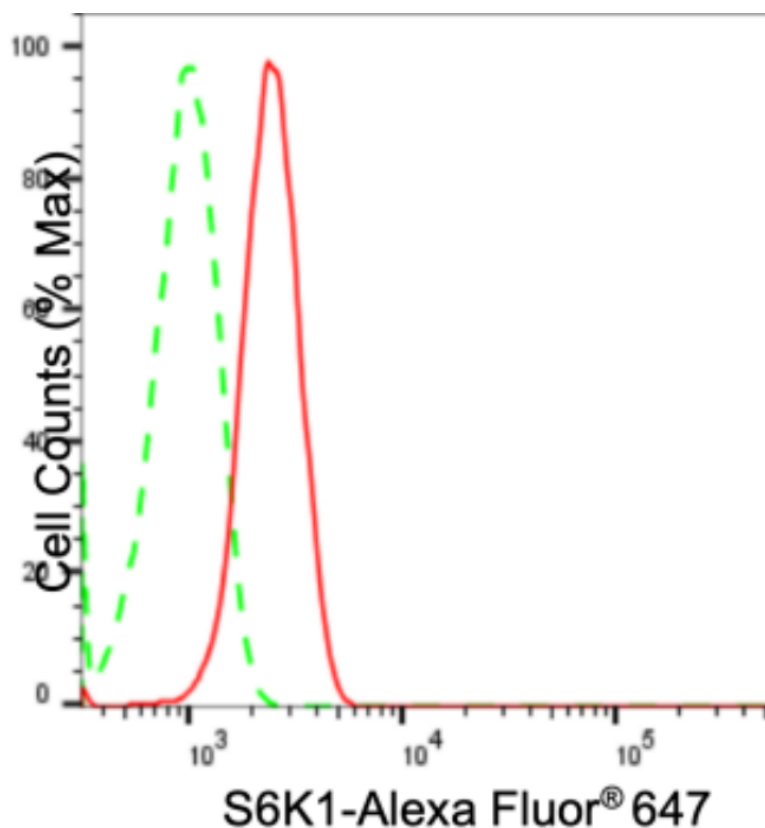
WWW.GENUINBIOTECH.COM

Anti-Ribosomal Protein S6 Kinase B1 Recombinant Rabbit Monoclonal Antibody

PAGE 2

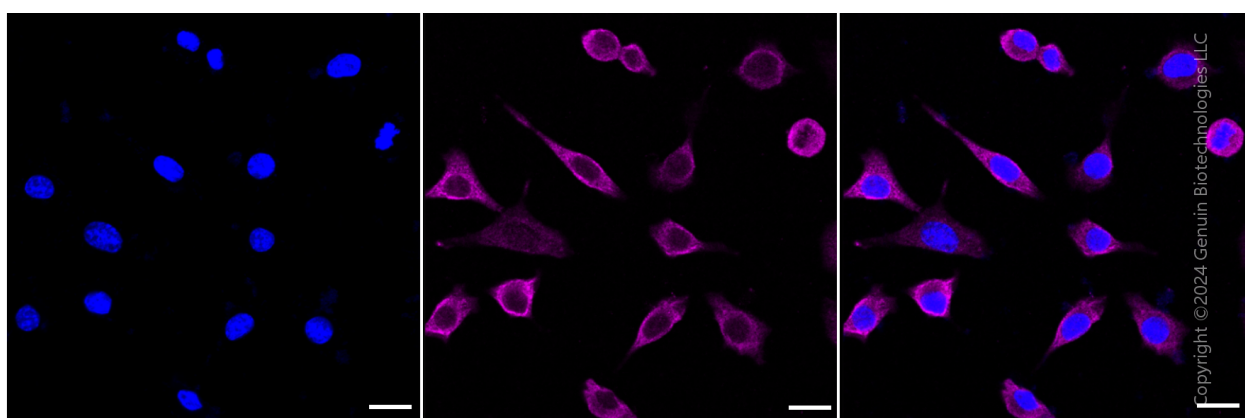
Note: This product is for research use only.

Validation Data



Copyright ©2024 Genuin Biotechnologies LLC

Flow cytometric analysis of S6K1 expression in C2C12 cells using anti-S6K1 antibody (Cat#2474, 1:2,000). Green, isotype control; red, S6K1.



Copyright ©2024 Genuin Biotechnologies LLC

SUPPORT

SUPPORT@GENUINBIOTECH.COM
TEL: +1-540-855-7041

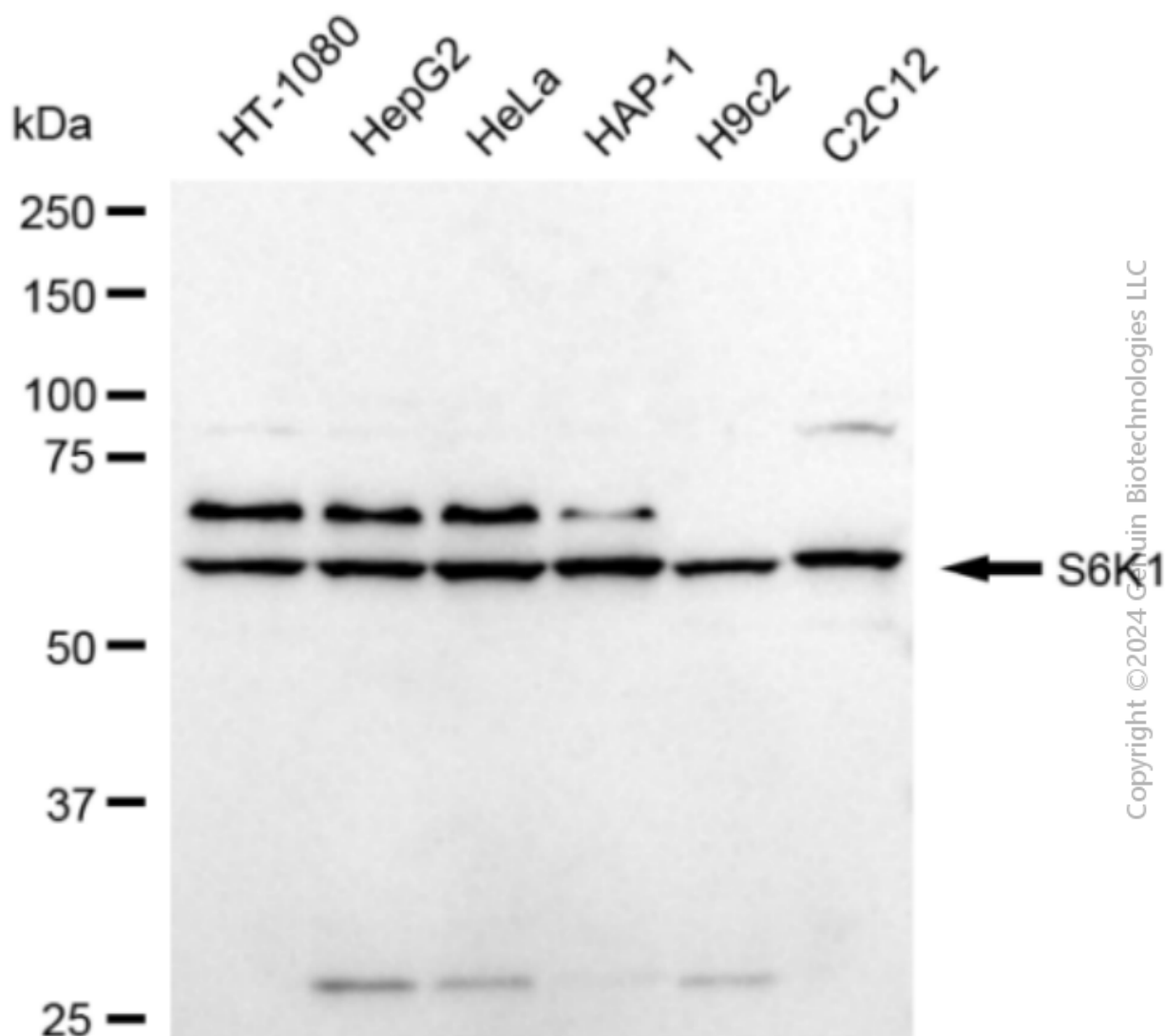
ORDERS

SALES@GENUINBIOTECH.COM
FAX: +1-540-855-7041

WWW.GENUINBIOTECH.COM

Anti-Ribosomal Protein S6 Kinase B1 Recombinant Rabbit Monoclonal Antibody

PAGE 3



Western blotting analysis using anti-S6K1 antibody (Cat#2474). Total cell lysates (30 μ g) from various cell lines were loaded and separated by SDS-PAGE. The blot was incubated with anti-S6K1 antibody (Cat#2474, 1:5,000) and HRP-conjugated goat anti-rabbit secondary antibody (Cat#201, 1:20,000) respectively. Image was developed using FeQ™ ECL Substrate Kit (Cat#226).

SUPPORT

SUPPORT@GENUINBIOTECH.COM
TEL: +1-540-855-7041

ORDERS

SALES@GENUINBIOTECH.COM
FAX: +1-540-855-7041

WWW.GENUINBIOTECH.COM