

Anti-RAP1A + RAP1B Recombinant Rabbit Monoclonal Antibody



Catalog #: 2477

Aliases

RAP1B, Member Of RAS Oncogene Family; K-REV; RAL1B; GTP-Binding Protein Smg P21B; Ras-Related Protein Rap-1b; DKFZp586H0723; Ras Family Small GTP Binding Protein RAP1B; RAS-Related Protein RAP1B; Small GTP Binding Protein; EC 3.6.5.2; RAP1A, Member Of RAS Oncogene Family; KREV-1; SMGP21; GTP-Binding Protein Smg P21A; Ras-Related Protein Rap-1A; Ras-Related Protein Krev-1; C21KG; G-22K; KREV1; EC 3.6.5.2; RAP1

Background

Gene Name: RAP1B/ RAP1A

NCBI Gene Entry: [5908/5906](#)

UniProt Entry: [P61224/P62834](#)

Application Information

Molecular Weight: Predicted, 21 kDa; observed, 21 kDa

Clonality: Rabbit monoclonal antibody

Clone ID: 24GB1030

Species Reactivity: Human, mouse, rat

Applications Tested: Western blotting (WB), flow cytometry (FCM), immunocytochemistry (IC)

Immunogen

A synthesized peptide derived from human RAP1A + RAP1B

Isotype

Rabbit IgG

Storage Buffer

Supplied in PBS (pH 7.4) containing 50% glycerol, and 0.02% sodium azide.

Storage

Store at -20 °C for one year.

Recommended Dilutions

Western Blotting (WB): 1:1,000-1:5,000

Flow Cytometry (FCM): 1:2,000

Immunocytochemistry (IC): 1:100-1:1,000

SUPPORT

SUPPORT@GENUINBIOTECH.COM
TEL: +1-540-855-7041

ORDERS

SALES@GENUINBIOTECH.COM
FAX: +1-540-855-7041

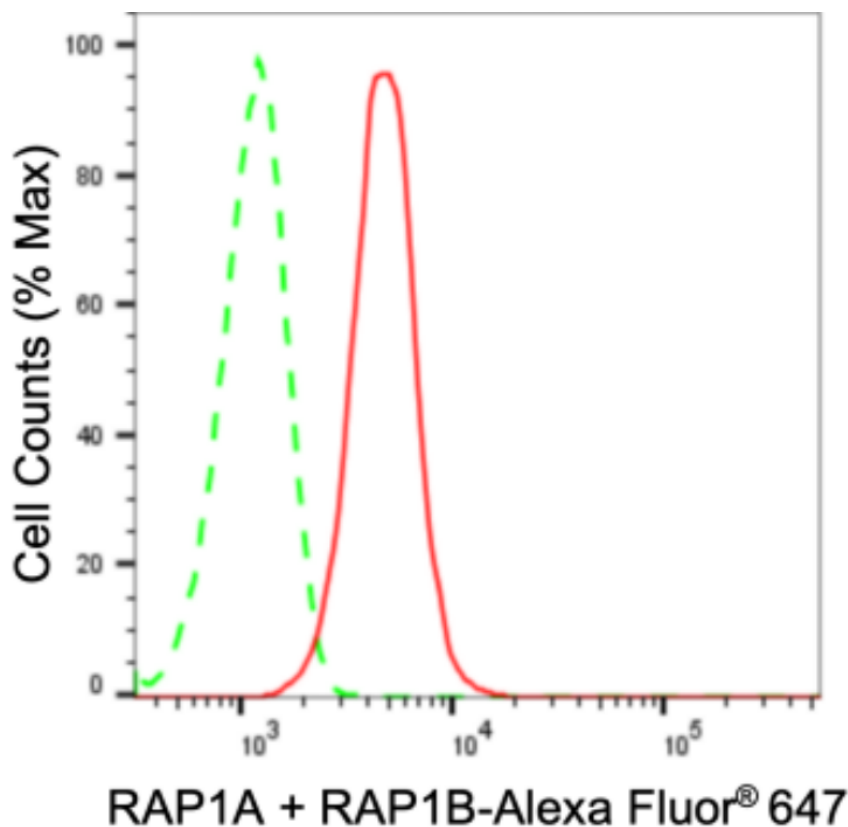
WWW.GENUINBIOTECH.COM

Anti-RAP1A + RAP1B Recombinant Rabbit Monoclonal Antibody

PAGE 2

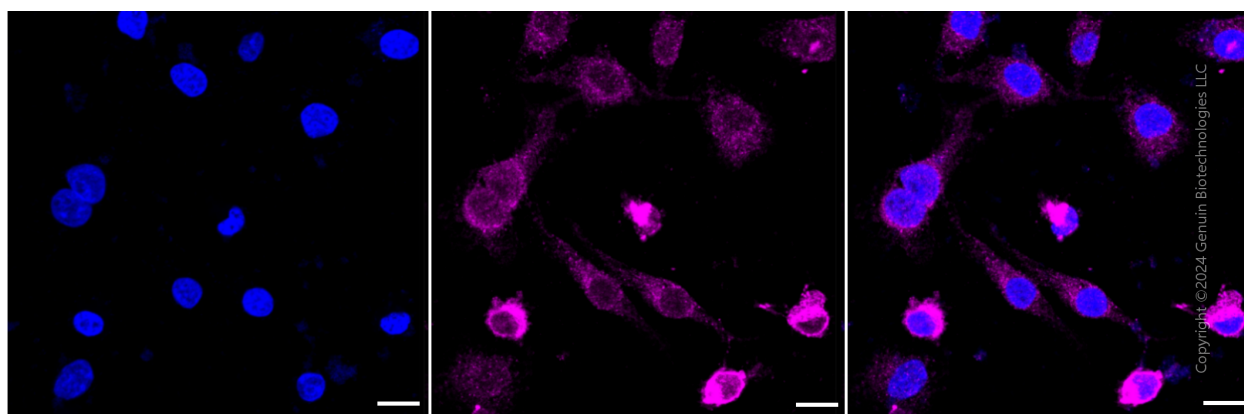
Note: This product is for research use only.

Validation Data



Copyright ©2024 Genuin Biotechnologies LLC

Flow cytometric analysis of RAP1A + RAP1B expression in HeLa cells using RAP1A + RAP1B antibody (Cat#2477, 1:2,000). Green, isotype control; red, RAP1A + RAP1B.



Immunocytochemical staining of HeLa cells with anti-RAP1A + RAP1B antibody (Cat#2477, 1:1,000). Nuclei were stained blue with DAPI; RAP1A + RAP1B was stained magenta with Alexa Fluor® 647. Images were taken using Leica stellaris 5. Protein abundance based on laser Intensity and smart gain: Medium. Scale bar: 20 μ m.

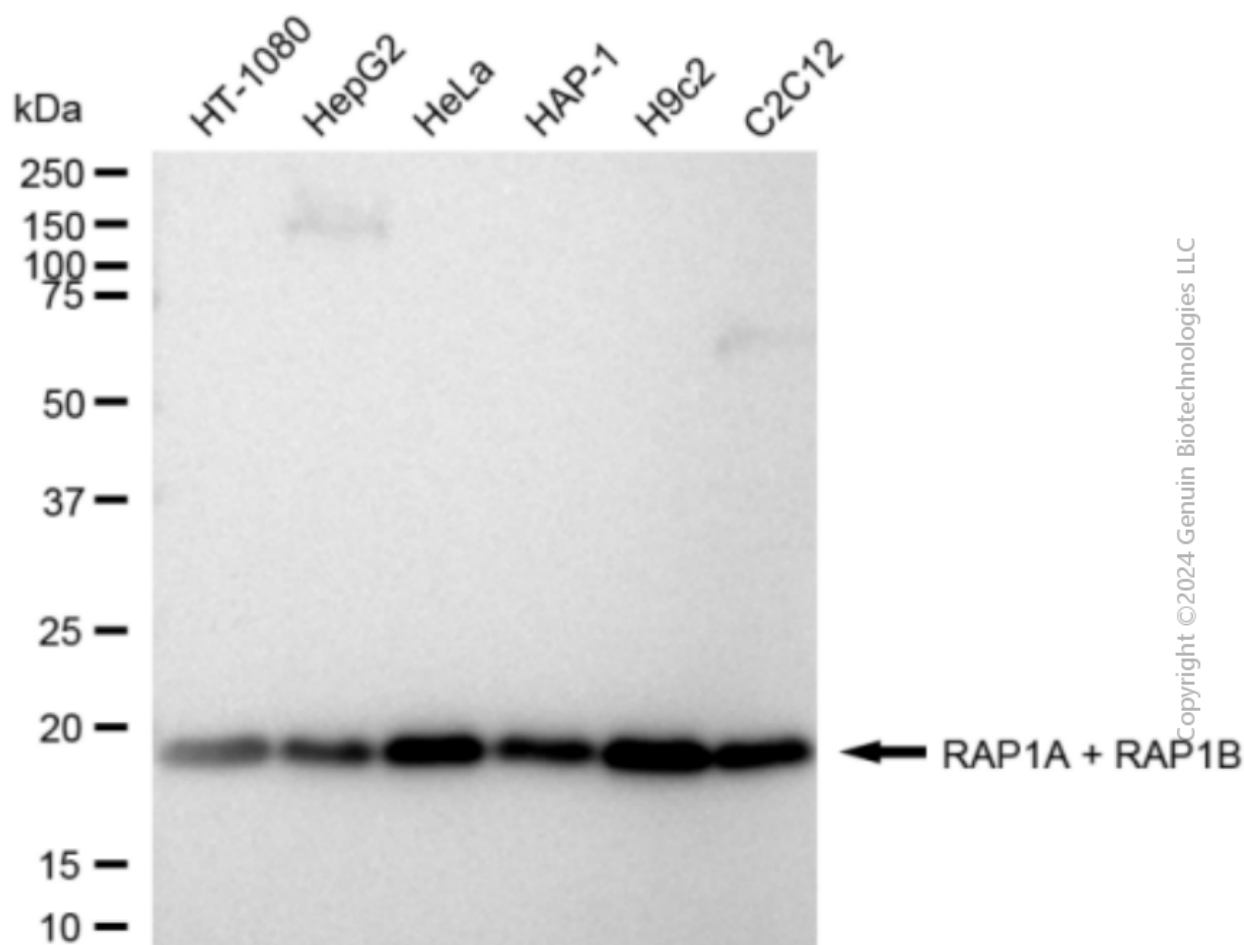
SUPPORT

SUPPORT@GENUINBIOTECH.COM
TEL: +1-540-855-7041

ORDERS

SALES@GENUINBIOTECH.COM
FAX: +1-540-855-7041

WWW.GENUINBIOTECH.COM



Western blotting analysis using anti-RAP1A + RAP1B antibody (Cat#2477). Total cell lysates (30 µg) from various cell lines were loaded and separated by SDS-PAGE. The blot was incubated with anti-RAP1A + RAP1B antibody (Cat#2477, 1:5,000) and HRP-conjugated goat anti-rabbit secondary antibody (Cat#201, 1:20,000) respectively. Image was developed using FeQ™ ECL Substrate Kit (Cat#226).