

Anti-RHEB Recombinant Rabbit Monoclonal Antibody



Catalog #: 2482

Aliases

Ras Homolog, MTORC1 Binding; RHEB2; Ras Homolog Enriched In Brain 2; Ras Homolog Enriched In Brain; GTP-Binding Protein Rheb; EC 3.6.5.-

Background

Gene Name: RHEB

NCBI Gene Entry: [6009](#)

UniProt Entry: [Q15382](#)

Application Information

Molecular Weight: Predicted, 20 kDa; observed, 20 kDa

Clonality: Rabbit monoclonal antibody

Clone ID: 24GB1055

Species Reactivity: Human, mouse, rat

Applications Tested: Western blotting (WB), flow cytometry (FCM), immunocytochemistry (IC)

Immunogen

A synthesized peptide derived from human RHEB

Isotype

Rabbit IgG

Storage Buffer

Supplied in PBS (pH 7.4) containing 50% glycerol, and 0.02% sodium azide.

Storage

Store at -20 °C for one year.

Recommended Dilutions

Western Blotting (WB): 1:1,000-1:5,000

Flow Cytometry (FCM): 1:2,000

Immunocytochemistry (IC): 1:100-1:1,000

Note: This product is for research use only.

Validation Data

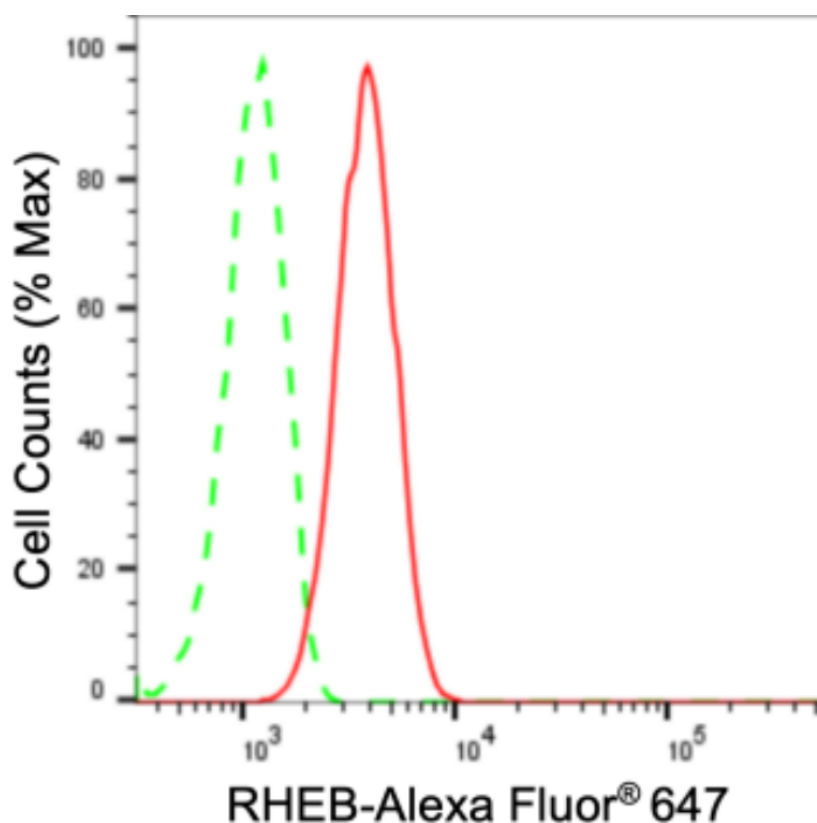
SUPPORT

SUPPORT@GENUINBIOTECH.COM
TEL: +1-540-855-7041

ORDERS

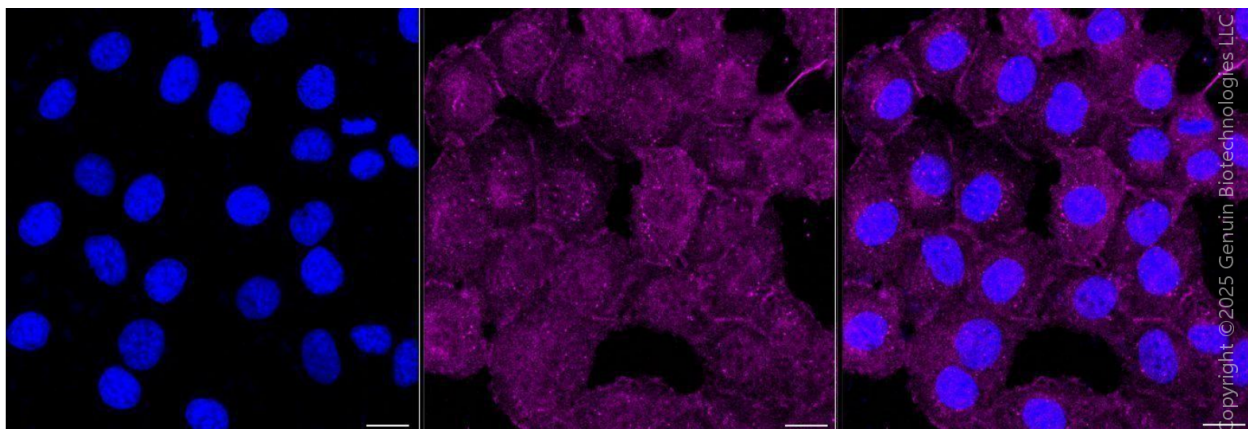
SALES@GENUINBIOTECH.COM
FAX: +1-540-855-7041

WWW.GENUINBIOTECH.COM



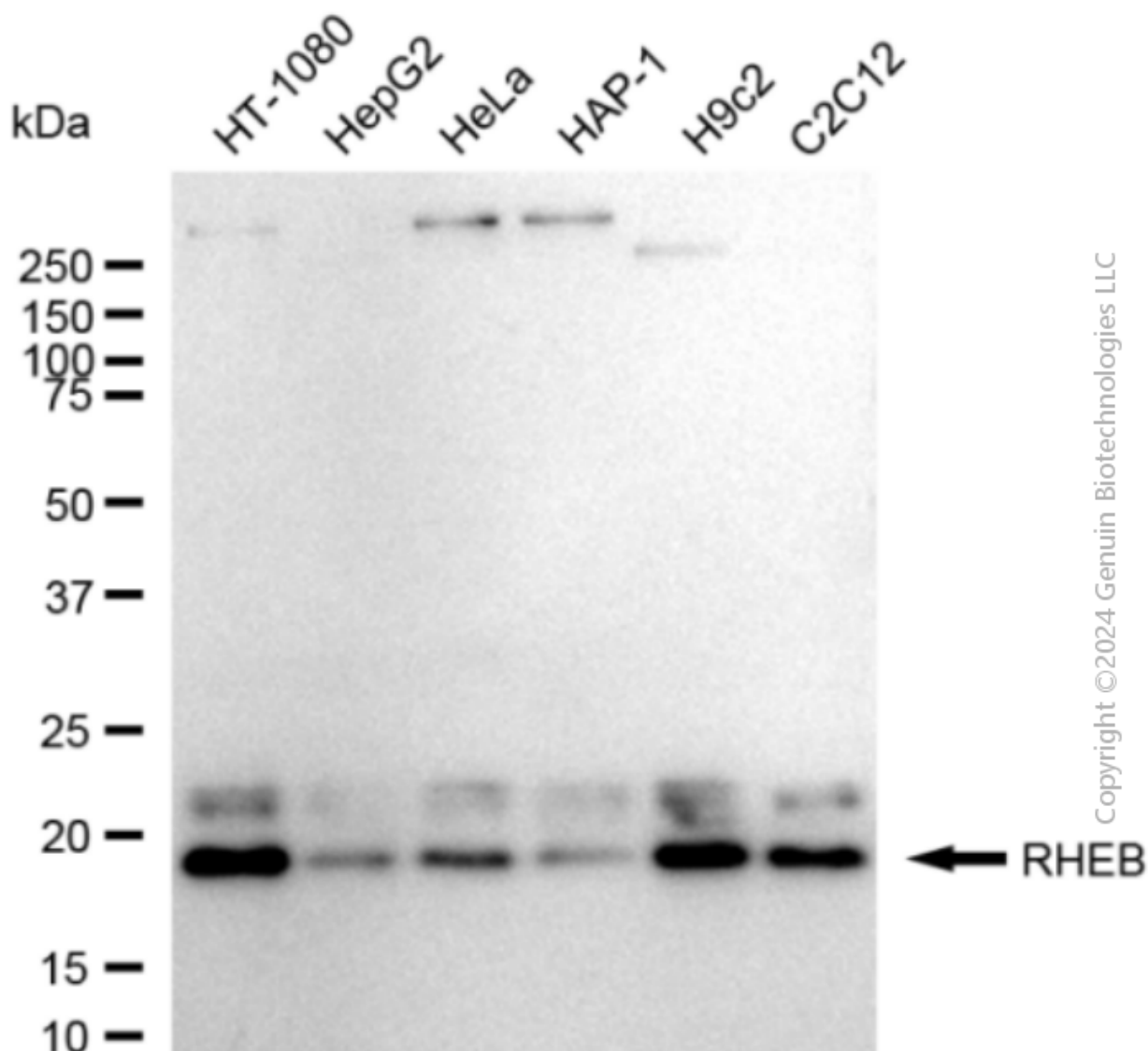
Copyright ©2024 Genuin Biotechnologies LLC

Flow cytometric analysis of RHEB expression in HT-1080 cells using anti-RHEB antibody (Cat#2482, 1:2,000). Green, isotype control; red, RHEB.



Copyright ©2025 Genuin Biotechnologies LLC

Immunocytochemical staining of HT-1080 cells with anti-RHEB antibody (Cat#2482, 1:1,000) . Nuclei were stained blue with DAPI; RHEB was stained magenta with Alexa Fluor® 647. Images were taken using Leica stellaris 5. Protein abundance based on laser Intensity and smart gain: Medium. Scale bar, 20 μ m.



Western blotting analysis using anti-RHEB antibody (Cat#2482). Total cell lysates (30 µg) from various cell lines were loaded and separated by SDS-PAGE. The blot was incubated with anti-RHEB antibody (Cat#2482, 1:5,000) and HRP-conjugated goat anti-rabbit secondary antibody (Cat#201, 1:20,000) respectively. Image was developed using FeQ™ ECL Substrate Kit (Cat#226).