

Anti-Distal-less homeobox 3 Recombinant Rabbit Monoclonal Antibody



Catalog #: 2483

Aliases

Distal-Less Homeobox 3; Homeobox Protein DLX-3; Distal-Less Homeo Box 3; AI4; TDO

Background

Gene Name: DLX3

NCBI Gene Entry: [1747](#)

UniProt Entry: [O60479](#)

Application Information

Molecular Weight: Predicted, 32 kDa; observed, 40 kDa

Clonality: Rabbit monoclonal antibody

Clone ID: 23GB1360

Species Reactivity: Human, mouse

Applications Tested: Western blotting (WB), flow cytometry (FCM), immunocytochemistry (IC)

Immunogen

A synthesized peptide derived from human DLX3

Isotype

Rabbit IgG

Storage Buffer

Supplied in PBS (pH 7.4) containing 50% glycerol, and 0.02% sodium azide.

Storage

Store at -20 °C for one year.

Recommended Dilutions

Western Blotting (WB): 1:1,000-1:5,000

Flow Cytometry (FCM): 1:2,000

Immunocytochemistry (IC): 1:100-1:1,000

Note: This product is for research use only.

Validation Data

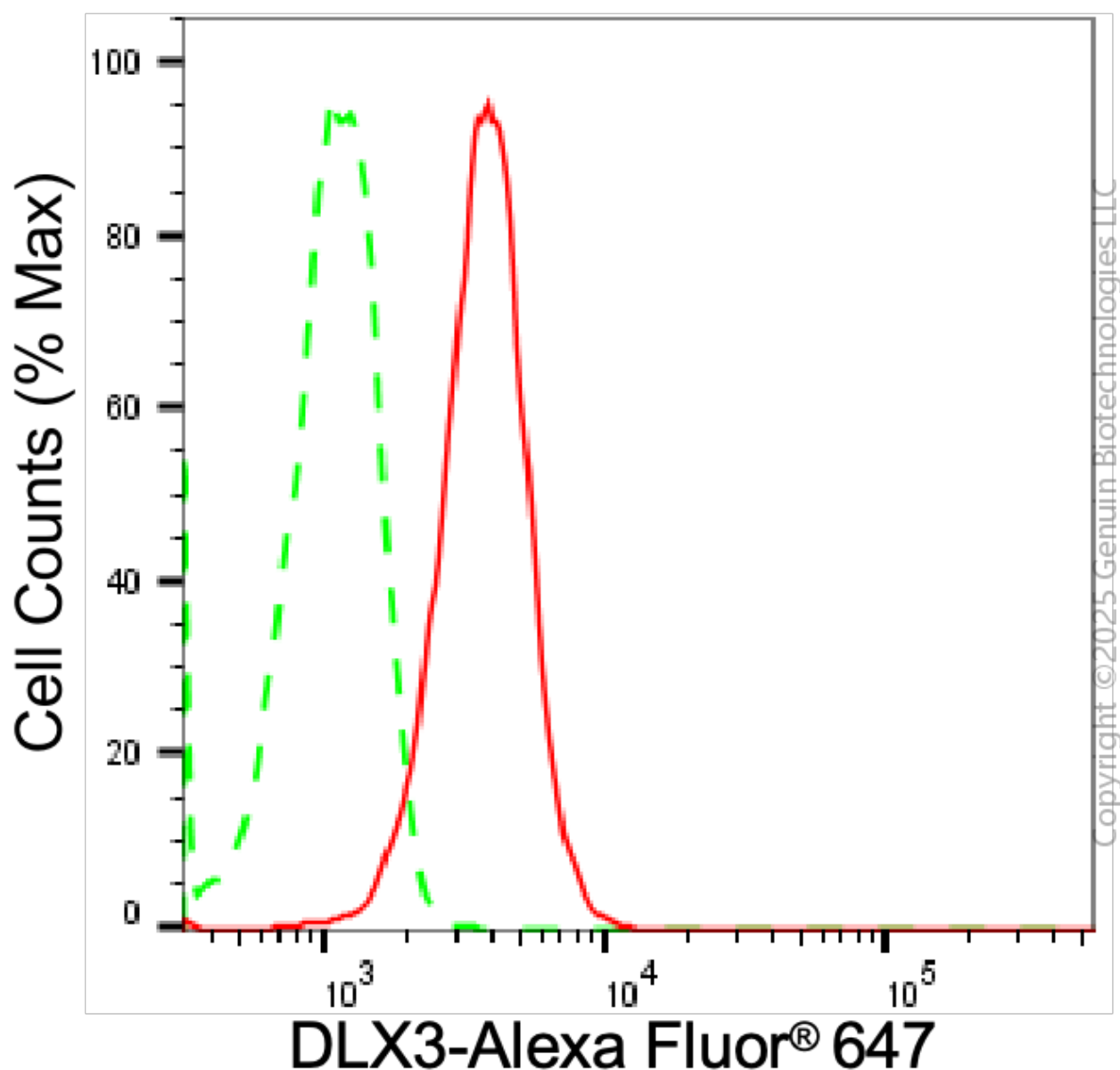
SUPPORT

SUPPORT@GENUINBIOTECH.COM
TEL: +1-540-855-7041

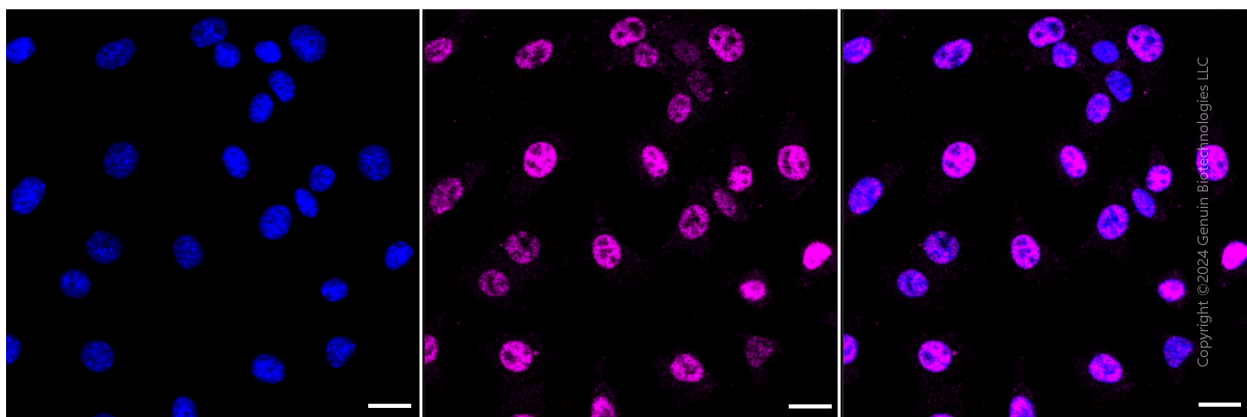
ORDERS

SALES@GENUINBIOTECH.COM
FAX: +1-540-855-7041

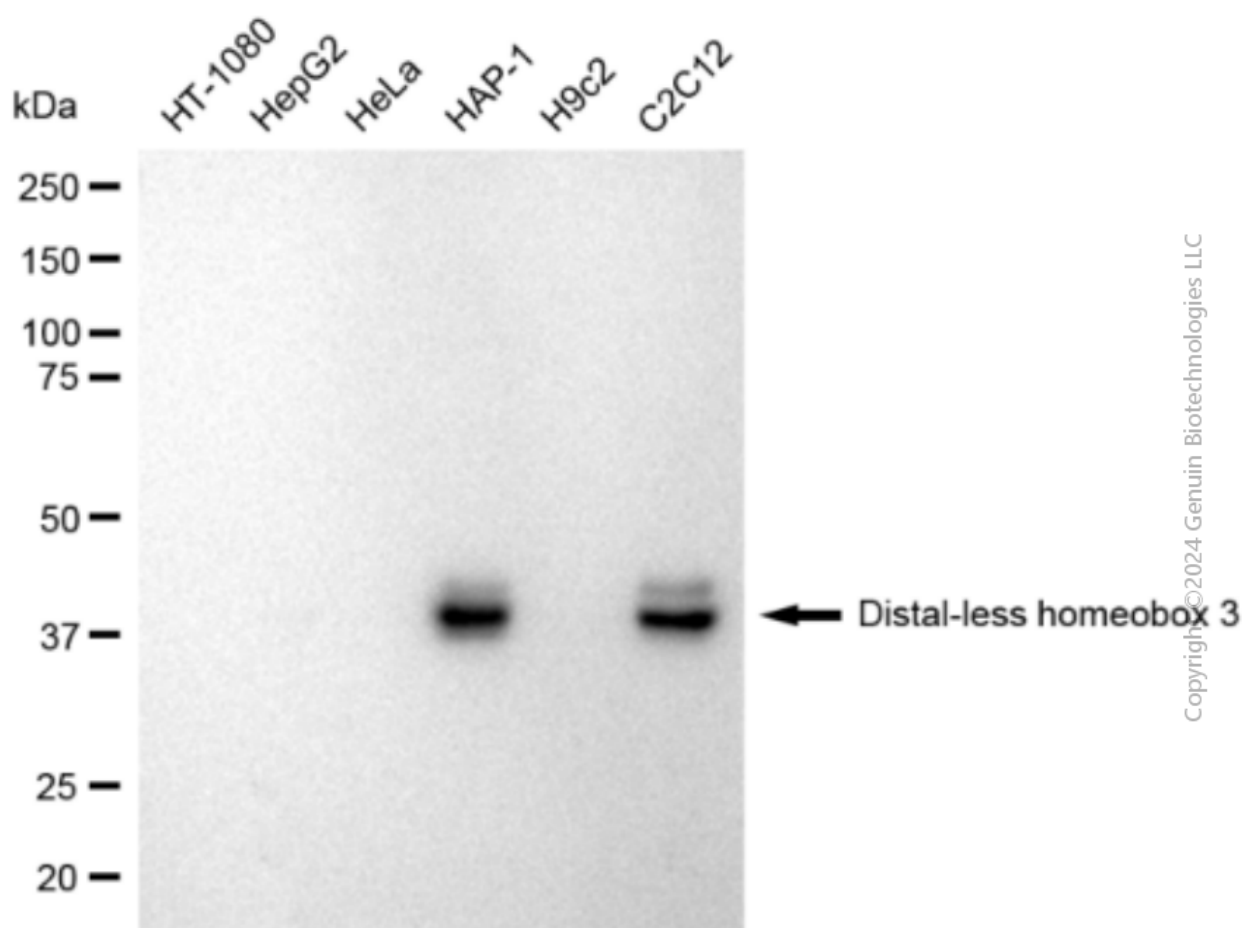
WWW.GENUINBIOTECH.COM



Flow cytometric analysis of DLX3 expression in C2C12 cells using anti-DLX3 antibody (Cat#2483, 1 µg/2000). Green, isotype control; red, DLX3.



Immunocytochemical staining of HeLa cells with Distal-less homeobox 3 antibody (Cat#2483, 1:1,000). Nuclei were stained blue with DAPI; Distal-less homeobox 3 was stained magenta with Alexa Fluor® 647. Images were taken using Leica stellaris 5. Protein abundance based on laser Intensity and smart gain: Medium. Scale bar: 20 μ m.



Western blotting analysis using anti-Distal-less homeobox 3 antibody (Cat#2483). Total cell lysates (30 μ g) from various cell lines were loaded and separated by SDS-PAGE. The blot was

Anti-Distal-less homeobox 3 Recombinant Rabbit Monoclonal Antibody

PAGE 4

incubated with anti-Distal-less homeobox 3 antibody (Cat#2483, 1:5,000) and HRP-conjugated goat anti-rabbit secondary antibody (Cat#201, 1:20,000) respectively. Image was developed using FeQ™ ECL Substrate Kit (Cat#226).

SUPPORT

SUPPORT@GENUINBIOTECH.COM
TEL: +1-540-855-7041

ORDERS

SALES@GENUINBIOTECH.COM
FAX: +1-540-855-7041

WWW.GENUINBIOTECH.COM