

Anti-Ras Homolog Family Member Q Recombinant Rabbit Monoclonal Antibody



Catalog #: 2493

Aliases

Ras Homolog Family Member Q; TC10; RASL7A; ARHQ; Rho-Related GTP-Binding Protein RhoQ; Ras Homolog Gene Family, Member Q; Ras-Like Protein Family Member 7A; RAS-Like, Family 7, Member A; Ras-Like Protein TC10; Epididymis Secretory Protein Li 42; HEL-S-42; TC10A

Background

Gene Name: RHOQ

NCBI Gene Entry: [23433](#)

UniProt Entry: [P17081](#)

Application Information

Molecular Weight: Predicted, 23 kDa; observed, 23 kDa

Clonality: Rabbit monoclonal antibody

Clone ID: 24GB1105

Species Reactivity: Human

Applications Tested: Western blotting (WB), immunocytochemistry (IC)

Immunogen

A synthesized peptide derived from human TC10A

Isotype

Rabbit IgG

Storage Buffer

Supplied in PBS (pH 7.4) containing 50% glycerol, and 0.02% sodium azide.

Storage

Store at -20 °C for one year.

Recommended Dilutions

Western Blotting (WB): 1:1,000-1:5,000

Immunocytochemistry (IC): 1:100-1:1,000

Note: This product is for research use only.

SUPPORT

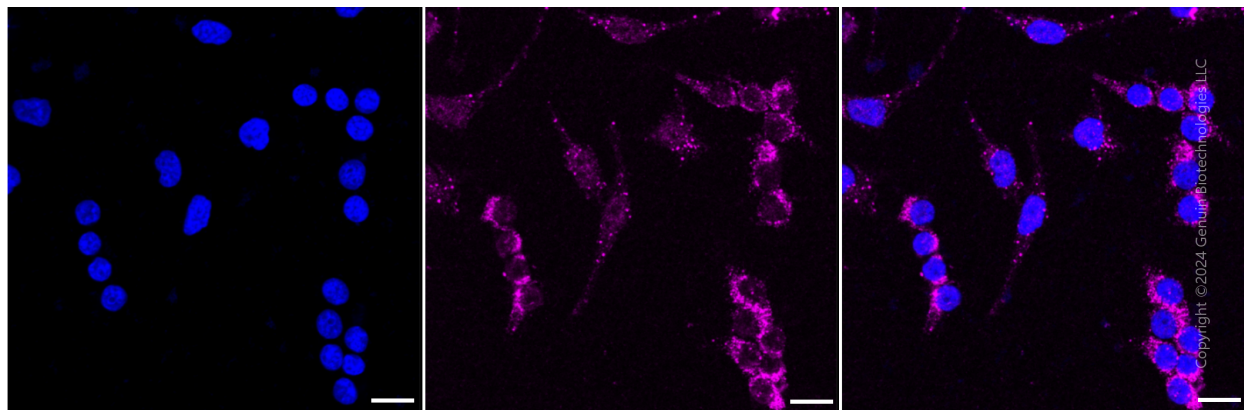
SUPPORT@GENUINBIOTECH.COM
TEL: +1-540-855-7041

ORDERS

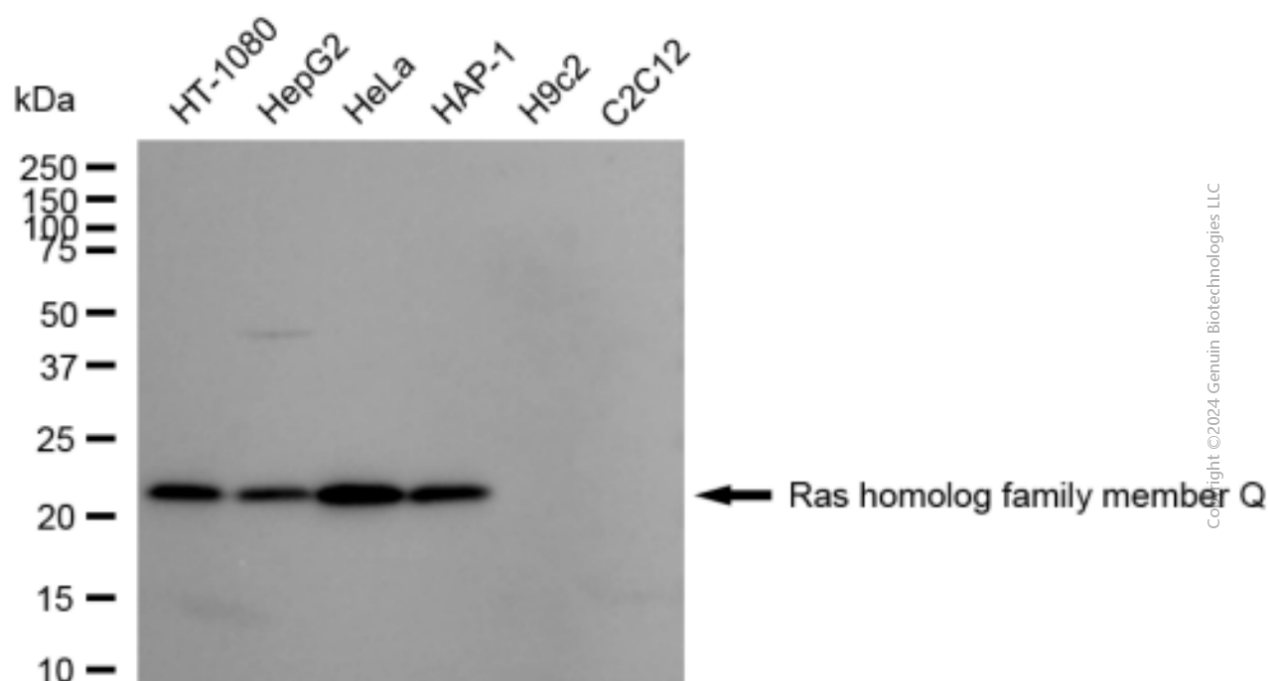
SALES@GENUINBIOTECH.COM
FAX: +1-540-855-7041

WWW.GENUINBIOTECH.COM

Validation Data



Immunocytochemical staining of HeLa cells with anti-Ras homolog family member Q antibody (Cat#2493, 1:1,000). Nuclei were stained blue with DAPI; Ras homolog family member Q was stained magenta with Alexa Fluor® 647. Images were taken using Leica stellaris 5. Protein abundance based on laser Intensity and smart gain:Medium . Scale bar: 20 μ m.



Western blotting analysis using anti-Ras homolog family member Q antibody (Cat#2493). Total cell lysates (30 μ g) from various cell lines were loaded and separated by SDS-PAGE. The blot was incubated with anti-Ras homolog family member Q antibody (Cat#2493, 1:5,000) and HRP-conjugated goat anti-rabbit secondary antibody (Cat#201, 1:20,000) respectively. Image was developed using FeQ™ ECL Substrate Kit (Cat#226).