

Anti-Pleiotrophin Recombinant Rabbit Monoclonal Antibody



Catalog #: 2494

Aliases

Pleiotrophin; HBNF; HBGF8; NEGF1; Heparin-Binding Neurite Outgrowth-Promoting Factor 1; Heparin-Binding Growth-Associated Molecule; Heparin-Binding Growth Factor 8; Heparin-Binding Brain Mitogen; Osteoblast-Specific Factor 1; HB-GAM; HBGF-8; HBNF-1; OSF-1; HBBM; Pleiotrophin (Heparin Binding Growth Factor 8, Neurite Growth-Promoting Factor 1); Heparin-Binding Neurite Outgrowth Promoting Factor; Heparin-Binding Neurite Outgrowth-Promoting Factor; Neurite Growth-Promoting Factor 1; Heparin Affin Regulatory Protein; Heparin Binding Growth Factor 8; HBNF1; HARP

Background

Gene Name: PTN

NCBI Gene Entry: [5764](#)

UniProt Entry: [P21246](#)

Application Information

Molecular Weight: Predicted, 19 kDa; observed, 18 kDa

Clonality: Rabbit monoclonal antibody

Clone ID: 24GB1110

Species Reactivity: Human, mouse, rat

Applications Tested: Western blotting (WB), immunocytochemistry (IC)

Immunogen

A synthesized peptide derived from human Pleiotrophin

Isotype

Rabbit IgG

Storage Buffer

Supplied in PBS (pH 7.4) containing 50% glycerol, and 0.02% sodium azide.

Storage

Store at -20 °C for one year.

Recommended Dilutions

Western Blotting (WB): 1:1,000-1:5,000

Immunocytochemistry (IC): 1:100-1:1,000

SUPPORT

SUPPORT@GENUINBIOTECH.COM
TEL: +1-540-855-7041

ORDERS

SALES@GENUINBIOTECH.COM
FAX: +1-540-855-7041

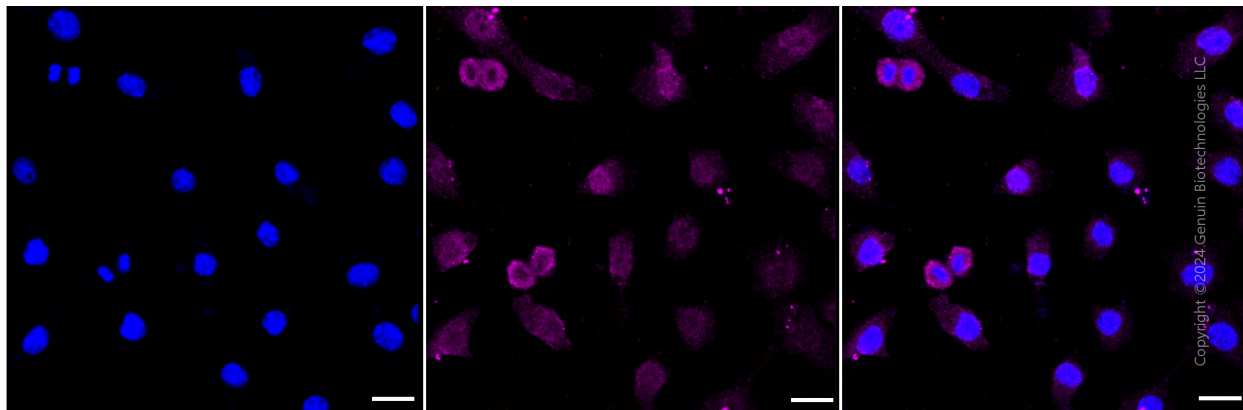
WWW.GENUINBIOTECH.COM

Anti-Pleiotrophin Recombinant Rabbit Monoclonal Antibody

PAGE 2

Note: This product is for research use only.

Validation Data



Immunocytochemical staining of C2C12 cells with anti-Pleiotrophin antibody (Cat#2494, 1:1,000). Nuclei were stained blue with DAPI; Pleiotrophin was stained magenta with Alexa Fluor® 647. Images were taken using Leica stellaris 5. Protein abundance based on laser Intensity and smart gain: Low. Scale bar: 20 μ m.

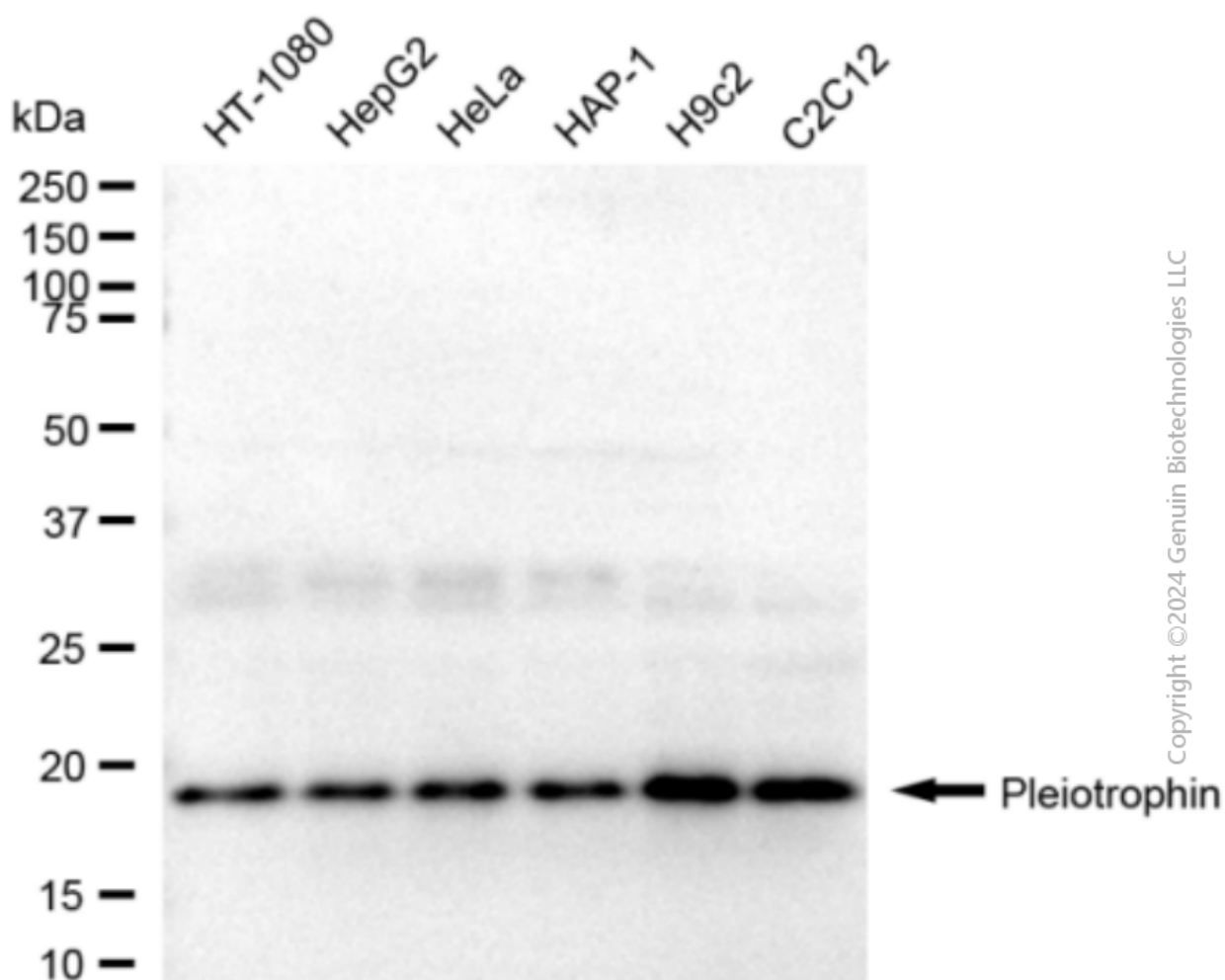
SUPPORT

SUPPORT@GENUINBIOTECH.COM
TEL: +1-540-855-7041

ORDERS

SALES@GENUINBIOTECH.COM
FAX: +1-540-855-7041

WWW.GENUINBIOTECH.COM



Western blotting analysis using anti-Pleiotrophin antibody (Cat#2494). Total cell lysates (30 μ g) from various cell lines were loaded and separated by SDS-PAGE. The blot was incubated with anti-Pleiotrophin antibody (Cat#2494, 1:5,000) and HRP-conjugated goat anti-rabbit secondary antibody (Cat#201, 1:20,000) respectively. Image was developed using FeQ™ ECL Substrate Kit (Cat#226).