

# Anti-Proteasome 20S Subunit Alpha 2 Recombinant Rabbit Monoclonal Antibody



**Catalog #: 2495**

## Aliases

Proteasome 20S Subunit Alpha 2; HC3; PMSA2; MU; Proteasome (Prosome, Macropain) Subunit, Alpha Type, 2; Multicatalytic Endopeptidase Complex Subunit C3; Proteasome Subunit Alpha Type-2; Proteasome Subunit Alpha 2; Proteasome Component C3; Macropain Subunit C3; Proteasome Subunit HC3; EC 3.4.25.1; PSC2; PSC3

## Background

Gene Name: PSMA2

NCBI Gene Entry: [5683](#)

UniProt Entry: [P25787](#)

## Application Information

Molecular Weight: Predicted, 26 kDa; observed, 25 kDa

Clonality: Rabbit monoclonal antibody

Clone ID: 24GB1115

Species Reactivity: Human, mouse, rat

Applications Tested: Western blotting (WB), flow cytometry (FCM), immunocytochemistry (IC)

## Immunogen

A synthesized peptide derived from human PSMA2

## Isotype

Rabbit IgG

## Storage Buffer

Supplied in PBS (pH 7.4) containing 50% glycerol, and 0.02% sodium azide.

## Storage

Store at -20 °C for one year.

## Recommended Dilutions

Western Blotting (WB): 1:1,000-1:5,000

Flow Cytometry (FCM): 1:2,000

Immunocytochemistry (IC): 1:100-1:1,000

---

### SUPPORT

SUPPORT@GENUINBIOTECH.COM  
TEL: +1-540-855-7041

### ORDERS

SALES@GENUINBIOTECH.COM  
FAX: +1-540-855-7041

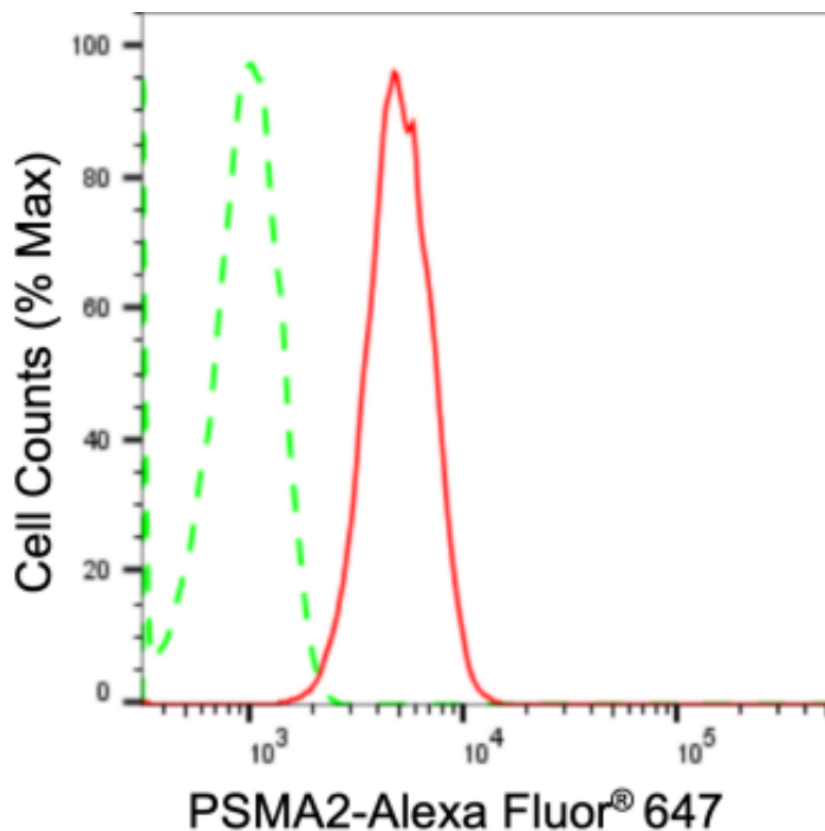
[WWW.GENUINBIOTECH.COM](http://WWW.GENUINBIOTECH.COM)

# Anti-Proteasome 20S Subunit Alpha 2 Recombinant Rabbit Monoclonal Antibody

PAGE 2

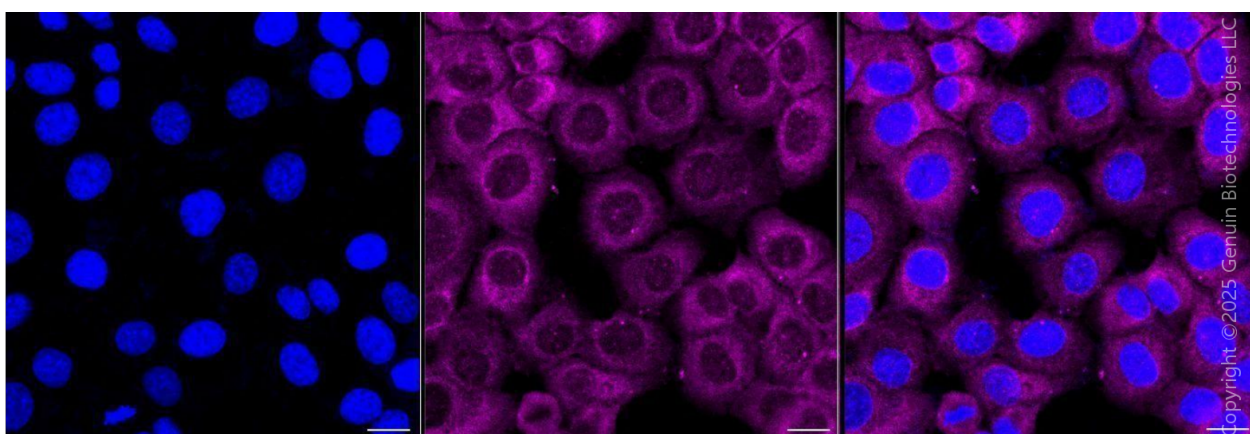
**Note:** This product is for research use only.

## Validation Data



Copyright ©2024 Genuin Biotechnologies LLC

Flow cytometric analysis of PSMA2 expression in HT-1080 cells using anti-PSMA2 antibody (Cat#2495, 1:2,000). Green, isotype control; red, PSMA2.



Copyright ©2025 Genuin Biotechnologies LLC

Immunocytochemical staining of HT-1080 cells with anti-PSMA2 antibody (Cat#2495, 1:1,000) . Nuclei were stained blue with DAPI; PSMA2 was stained magenta with Alexa Fluor® 647. Images were taken using Leica stellaris 5. Protein abundance based on laser Intensity and smart gain: Medium. Scale bar, 20  $\mu$ m.

## SUPPORT

SUPPORT@GENUINBIOTECH.COM  
TEL: +1-540-855-7041

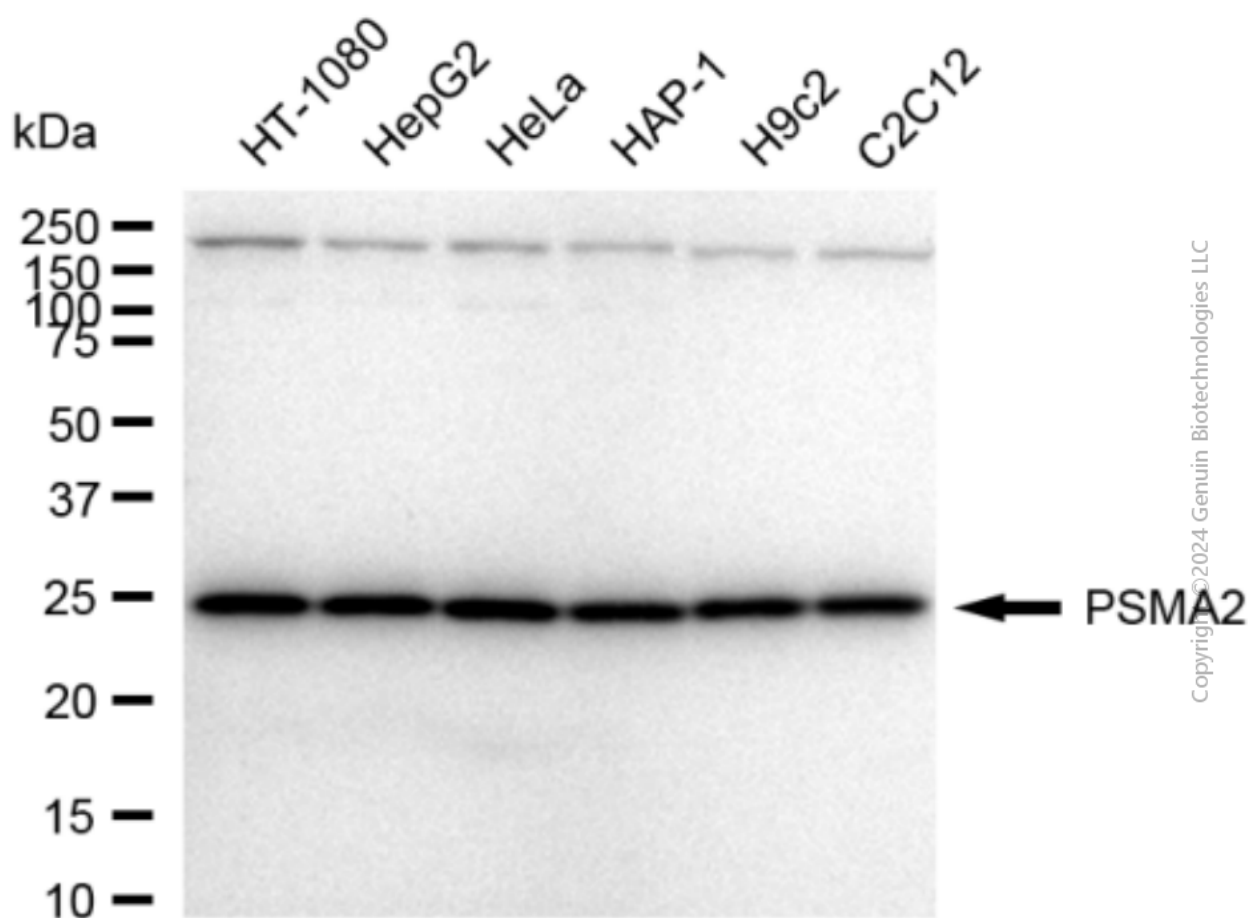
## ORDERS

SALES@GENUINBIOTECH.COM  
FAX: +1-540-855-7041

[WWW.GENUINBIOTECH.COM](http://WWW.GENUINBIOTECH.COM)

## Anti-Proteasome 20S Subunit Alpha 2 Recombinant Rabbit Monoclonal Antibody

PAGE 3



Western blotting analysis using anti-PSMA2 antibody (Cat#2495). Total cell lysates (30  $\mu$ g) from various cell lines were loaded and separated by SDS-PAGE. The blot was incubated with anti-PSMA2 antibody (Cat#2495, 1:5,000) and HRP-conjugated goat anti-rabbit secondary antibody (Cat#201, 1:20,000) respectively. Image was developed using FeQ™ ECL Substrate Kit (Cat#226).

### SUPPORT

SUPPORT@GENUINBIOTECH.COM  
TEL: +1-540-855-7041

### ORDERS

SALES@GENUINBIOTECH.COM  
FAX: +1-540-855-7041

WWW.GENUINBIOTECH.COM