

Anti-SUMO Specific Peptidase 2 Recombinant Rabbit Monoclonal Antibody



Catalog #: 2496

Aliases

SUMO Specific Peptidase 2; KIAA1331; SMT3IP2; AXAM2; SUMO1/Sentrin/SMT3 Specific Peptidase 2; SUMO1/Sentrin/SMT3 Specific Protease 2; Sentrin (SUMO1) Specific Peptidase 2; Sentrin/SUMO-Specific Protease SENP2; SMT3-Specific Isopeptidase 2; Sentrin-Specific Protease 2; DKFZp762A2316; EC 3.4.22.68; EC 3.4.22.-; EC 3.4.22; Smt3ip2; Axam2

Background

Gene Name: SENP2

NCBI Gene Entry: [59343](#)

UniProt Entry: [Q9HC62](#)

Application Information

Molecular Weight: Predicted, 68 kDa; observed, 68 kDa

Clonality: Rabbit monoclonal antibody

Clone ID: 24GB1120

Species Reactivity: Human

Applications Tested: Western blotting (WB), flow cytometry (FCM), immunocytochemistry (IC)

Immunogen

A synthesized peptide derived from human SENP2

Isotype

Rabbit IgG

Storage Buffer

Supplied in PBS (pH 7.4) containing 50% glycerol, and 0.02% sodium azide.

Storage

Store at -20 °C for one year.

Recommended Dilutions

Western Blotting (WB): 1:1,000-1:5,000

Flow Cytometry (FCM): 1:2,000

Immunocytochemistry (IC): 1:100-1:1,000

SUPPORT

SUPPORT@GENUINBIOTECH.COM
TEL: +1-540-855-7041

ORDERS

SALES@GENUINBIOTECH.COM
FAX: +1-540-855-7041

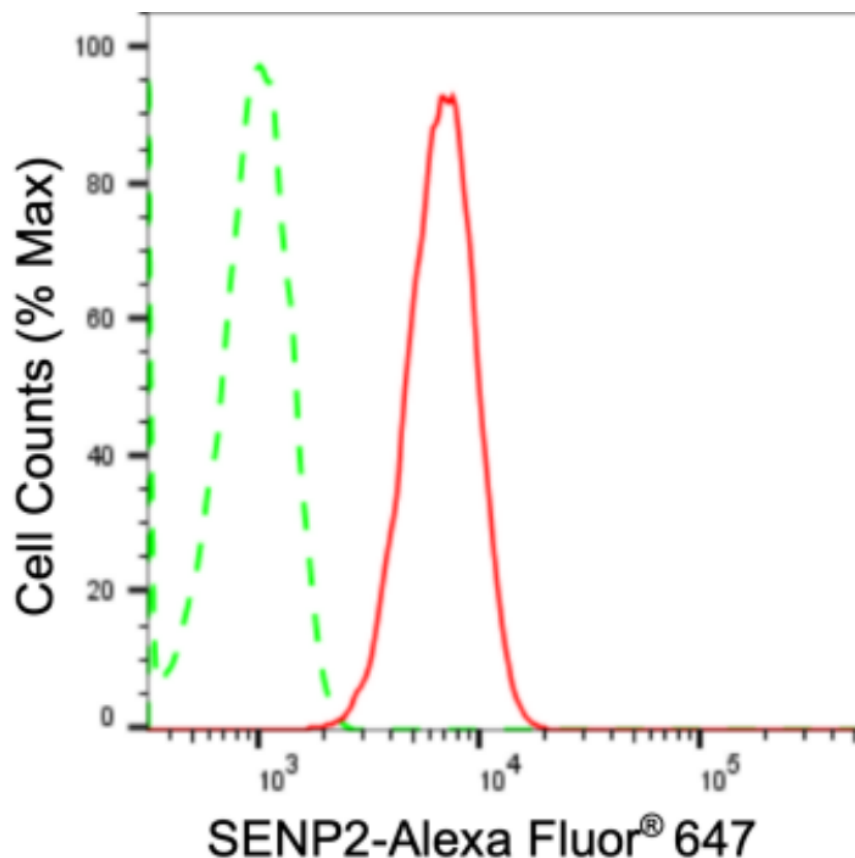
WWW.GENUINBIOTECH.COM

Anti-SUMO Specific Peptidase 2 Recombinant Rabbit Monoclonal Antibody

PAGE 2

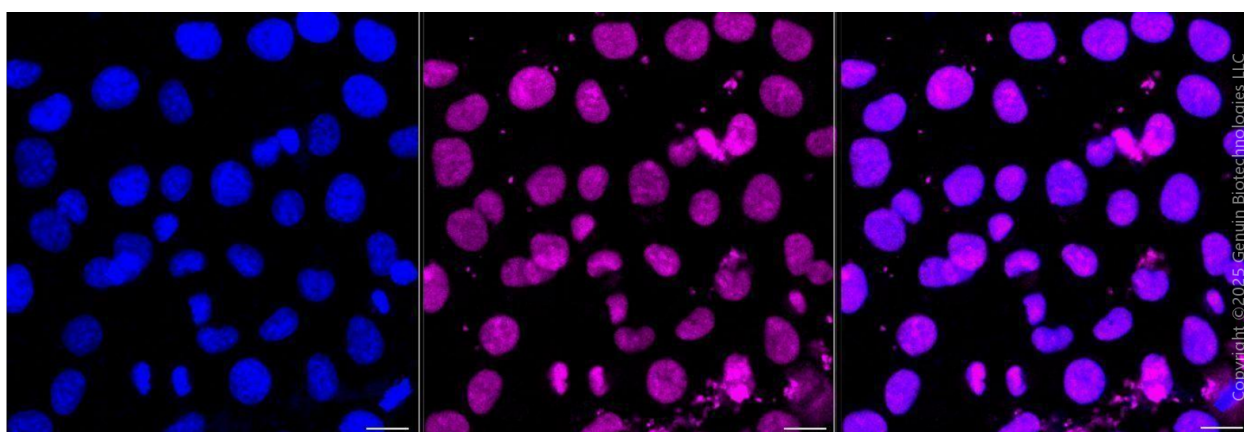
Note: This product is for research use only.

Validation Data



Copyright ©2024 Genuin Biotechnologies LLC

Flow cytometric analysis of SENP2 expression in HT-1080 cells using anti-SENP2 antibody (Cat#2496, 1:2,000). Green, isotype control; red, SENP2.



Copyright ©2025 Genuin Biotechnologies LLC

Immunocytochemical staining of HT-1080 cells with anti-SENP2 antibody (Cat#2496, 1:1,000). Nuclei were stained blue with DAPI; SENP2 was stained magenta with Alexa Fluor® 647. Images were taken using Leica stellaris 5. Protein abundance based on laser Intensity and smart gain: Medium. Scale bar, 20 μ m.

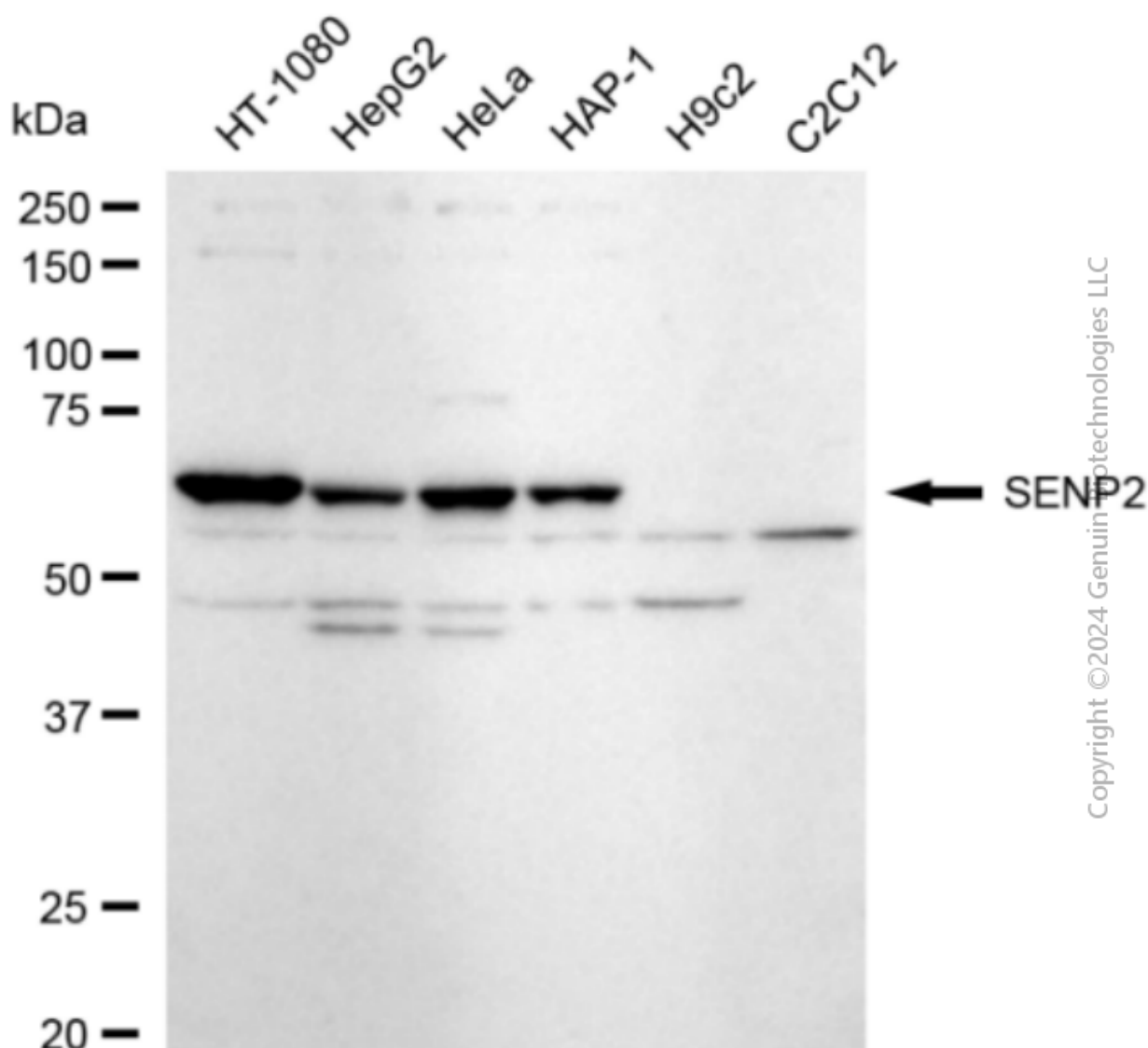
SUPPORT

SUPPORT@GENUINBIOTECH.COM
TEL: +1-540-855-7041

ORDERS

SALES@GENUINBIOTECH.COM
FAX: +1-540-855-7041

WWW.GENUINBIOTECH.COM



Western blotting analysis using anti-SENP2 antibody (Cat#2496). Total cell lysates (30 μ g) from various cell lines were loaded and separated by SDS-PAGE. The blot was incubated with anti-SENP2 antibody (Cat#2496, 1:5,000) and HRP-conjugated goat anti-rabbit secondary antibody (Cat#201, 1:20,000) respectively. Image was developed using FeQ™ ECL Substrate Kit (Cat#226).