

Anti-PTPN1/PTPN2 Recombinant Rabbit Monoclonal Antibody



Catalog #: 2498

Aliases

Protein Tyrosine Phosphatase Non-Receptor Type 1; PTP1B; Tyrosine-Protein Phosphatase Non-Receptor Type 1; Protein-Tyrosine Phosphatase 1B; EC 3.1.3.48; Protein Tyrosine Phosphatase, Placental; PTP-1B; Protein Tyrosine Phosphatase Non-Receptor Type 2; TCPTP; TCELLPTP; TC-PTP; PTPT; Tyrosine-Protein Phosphatase Non-Receptor Type 2; EC 3.1.3.48; TC45; TC48; T-Cell Protein Tyrosine Phosphatase; T-Cell Protein-Tyrosine Phosphatase; PTN2

Background

Gene Name: PTPN1/PTPN2

NCBI Gene Entry: [5770/5771](#)

UniProt Entry: [P18031/P17706](#)

Application Information

Molecular Weight: Predicted, 50,48 kDa; observed, 40-48kDa

Clonality: Rabbit monoclonal antibody

Clone ID: 24GB1130

Species Reactivity: Human, mouse, rat

Applications Tested: Western blotting (WB), flow cytometry (FCM), immunocytochemistry (IC)

Immunogen

A synthesized peptide derived from human PTPN1/2

Isotype

Rabbit IgG

Storage Buffer

Supplied in PBS (pH 7.4) containing 50% glycerol, and 0.02% sodium azide.

Storage

Store at -20 °C for one year.

Recommended Dilutions

Western Blotting (WB): 1:1,000-1:5,000

Flow Cytometry (FCM): 1:2,000

Immunocytochemistry (IC): 1:100-1:1,000

SUPPORT

SUPPORT@GENUINBIOTECH.COM
TEL: +1-540-855-7041

ORDERS

SALES@GENUINBIOTECH.COM
FAX: +1-540-855-7041

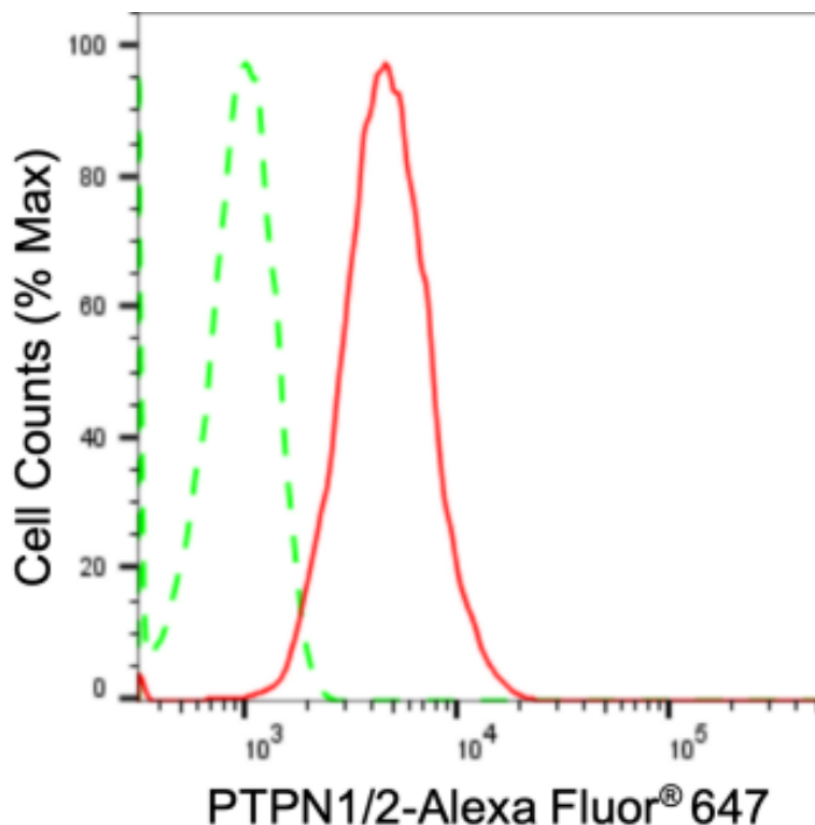
WWW.GENUINBIOTECH.COM

Anti-PTPN1/PTPN2 Recombinant Rabbit Monoclonal Antibody

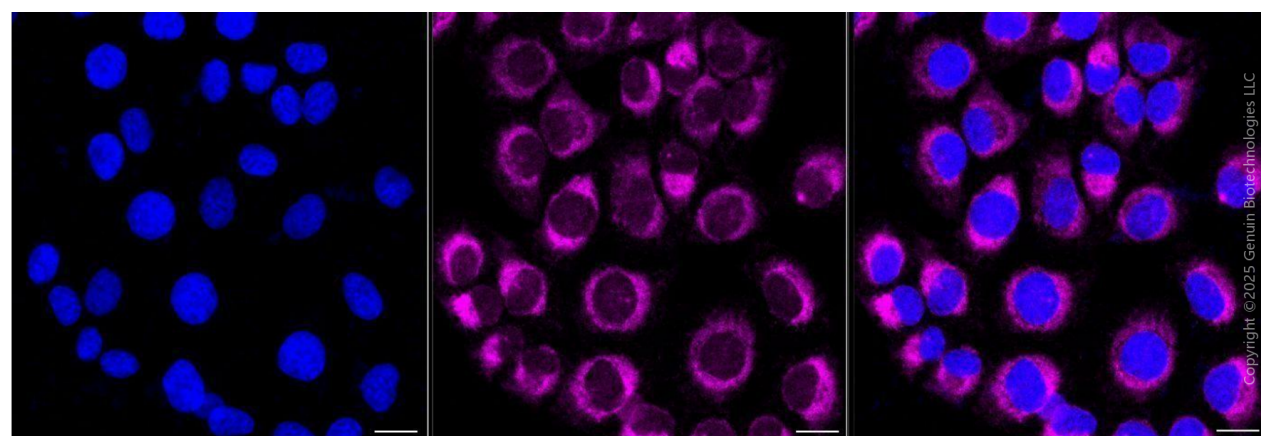
PAGE 2

Note: This product is for research use only.

Validation Data



Copyright ©2024 Genuin Biotechnologies LLC



Copyright ©2025 Genuin Biotechnologies LLC

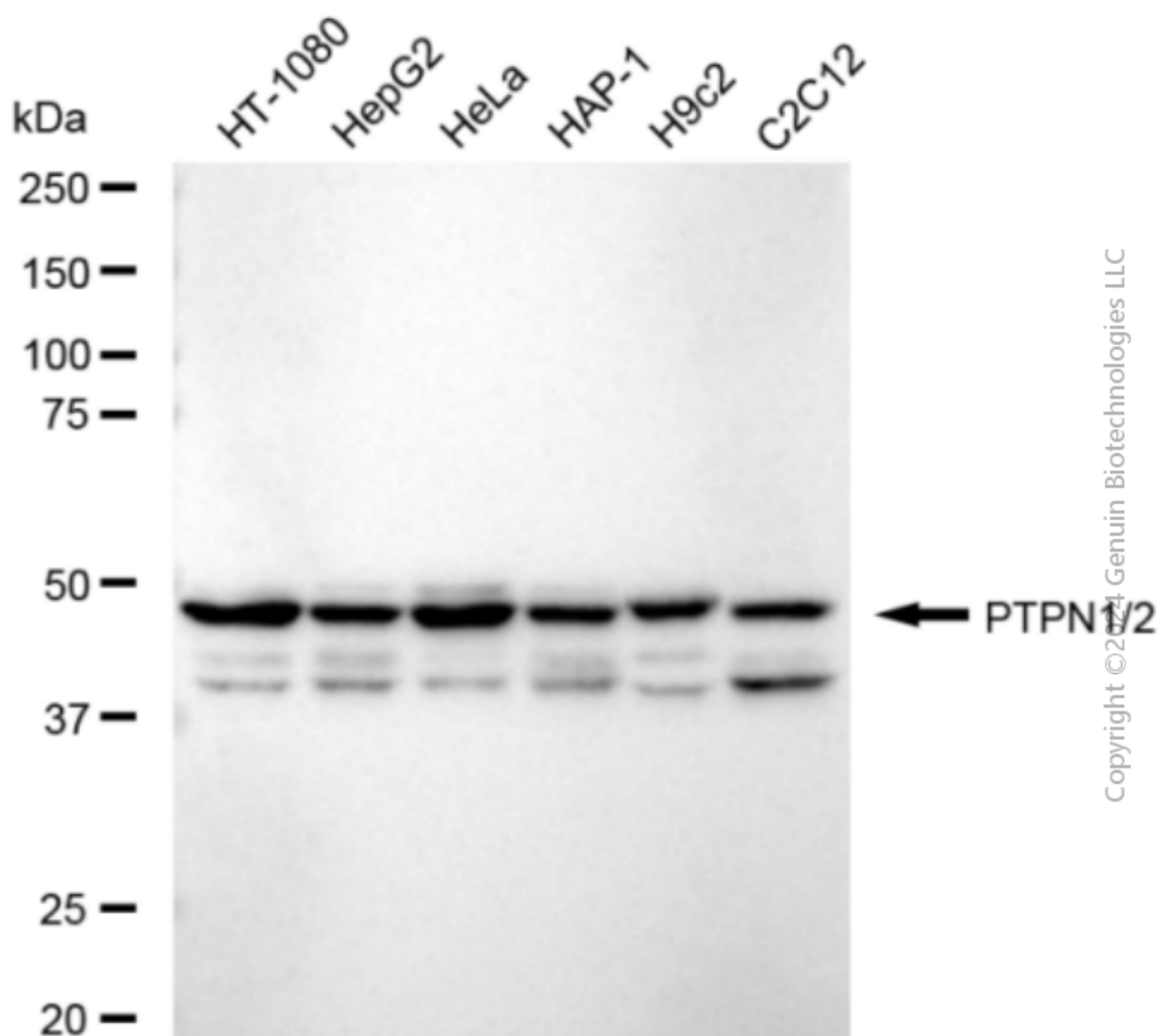
SUPPORT

SUPPORT@GENUINBIOTECH.COM
TEL: +1-540-855-7041

ORDERS

SALES@GENUINBIOTECH.COM
FAX: +1-540-855-7041

WWW.GENUINBIOTECH.COM



Copyright © 2014 Genuin Biotechnologies LLC

Western blotting analysis using anti-PTPN1/2 antibody (Cat#2498). Total cell lysates (30 µg) from various cell lines were loaded and separated by SDS-PAGE. The blot was incubated with anti-PTPN1/2 antibody (Cat#2498, 1:5,000) and HRP-conjugated goat anti-rabbit secondary antibody (Cat#201, 1:20,000) respectively. Image was developed using FeQ™ ECL Substrate Kit (Cat#226).