

# Anti-Protein Tyrosine Kinase 2 Beta Recombinant Rabbit Monoclonal Antibody



**Catalog #: 2503**

## Aliases

Protein Tyrosine Kinase 2 Beta; RAFTK; CADTK; CAKB; PYK2; FAK2; PTK; Calcium-Regulated Non-Receptor Proline-Rich Tyrosine Kinase; Related Adhesion Focal Tyrosine Kinase; Calcium-Dependent Tyrosine Kinase; Protein-Tyrosine Kinase 2-Beta; Proline-Rich Tyrosine Kinase 2; Cell Adhesion Kinase Beta; Focal Adhesion Kinase 2; EC 2.7.10.2; CAK-Beta; FADK 2; PTK2B Protein Tyrosine Kinase 2 Beta; Protein Kinase B; EC 2.7.10; FADK2; PKB

## Background

Gene Name: PTK2B

NCBI Gene Entry: [2185](#)

UniProt Entry: [Q14289](#)

## Application Information

Molecular Weight: Predicted, 116 kDa; observed, 116 kDa

Clonality: Rabbit monoclonal antibody

Clone ID: 24GB1155

Species Reactivity: Human, mouse, rat

Applications Tested: Western blotting (WB), flow cytometry (FCM), immunocytochemistry (IC)

## Immunogen

A synthesized peptide derived from human PYK2

## Isotype

Rabbit IgG

## Storage Buffer

Supplied in PBS (pH 7.4) containing 50% glycerol, and 0.02% sodium azide.

## Storage

Store at -20 °C for one year.

## Recommended Dilutions

Western Blotting (WB): 1:1,000-1:5,000

Flow Cytometry (FCM): 1:2,000

Immunocytochemistry (IC): 1:100-1:1,000

---

### SUPPORT

SUPPORT@GENUINBIOTECH.COM  
TEL: +1-540-855-7041

### ORDERS

SALES@GENUINBIOTECH.COM  
FAX: +1-540-855-7041

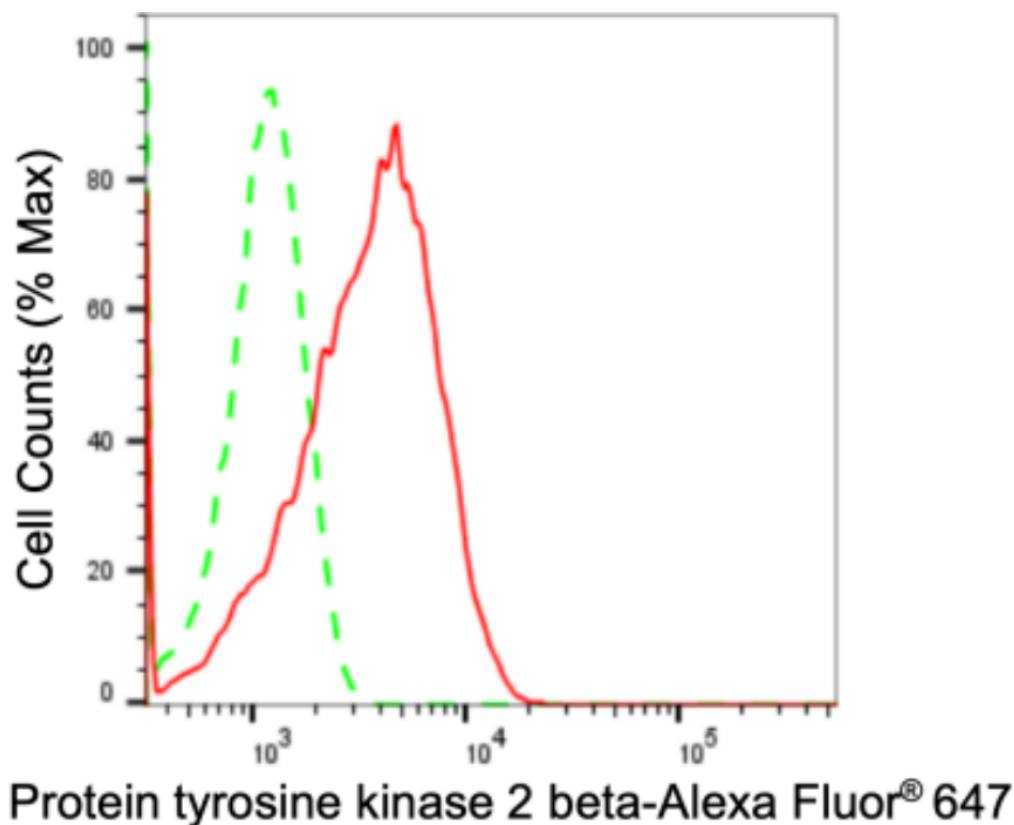
[WWW.GENUINBIOTECH.COM](http://WWW.GENUINBIOTECH.COM)

# Anti-Protein Tyrosine Kinase 2 Beta Recombinant Rabbit Monoclonal Antibody

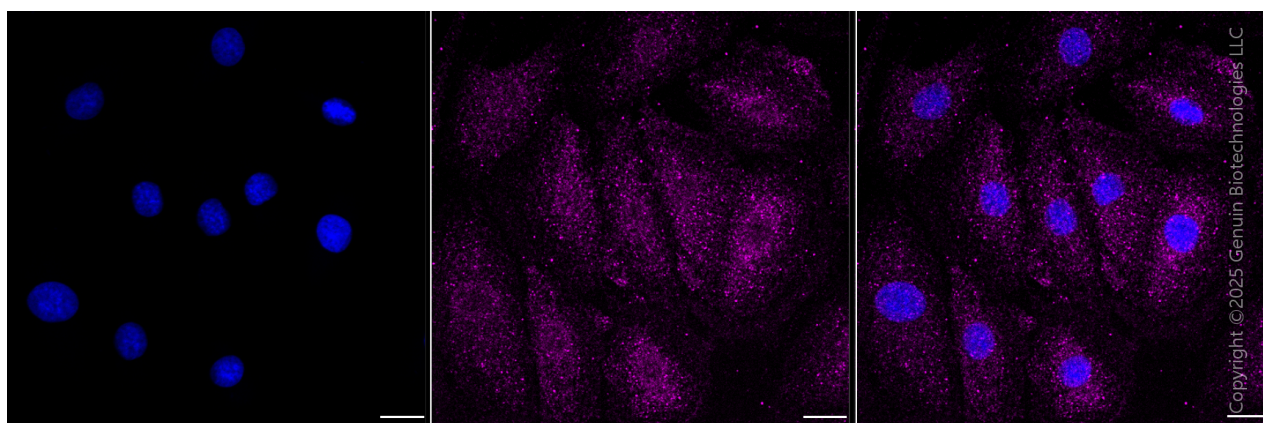
PAGE 2

**Note:** This product is for research use only.

## Validation Data



Flow cytometric analysis of Protein tyrosine kinase 2 beta expression in H9c2 cells using anti-Protein tyrosine kinase 2 beta antibody (Cat#2503, 1:2,000). Green, isotype control; red, Protein tyrosine kinase 2 beta.



Immunocytochemical staining of H9C2 cells with anti-Protein tyrosine kinase 2 beta antibody (Cat#2503, 1:1,000). Nuclei were stained blue with DAPI; Protein tyrosine kinase 2 beta was stained magenta with Alexa Fluor® 647. Images were taken using Leica stellaris 5. Protein abundance based on laser Intensity and smart gain: Medium. Scale bar, 20 µm.

### SUPPORT

SUPPORT@GENUINBIOTECH.COM  
TEL: +1-540-855-7041

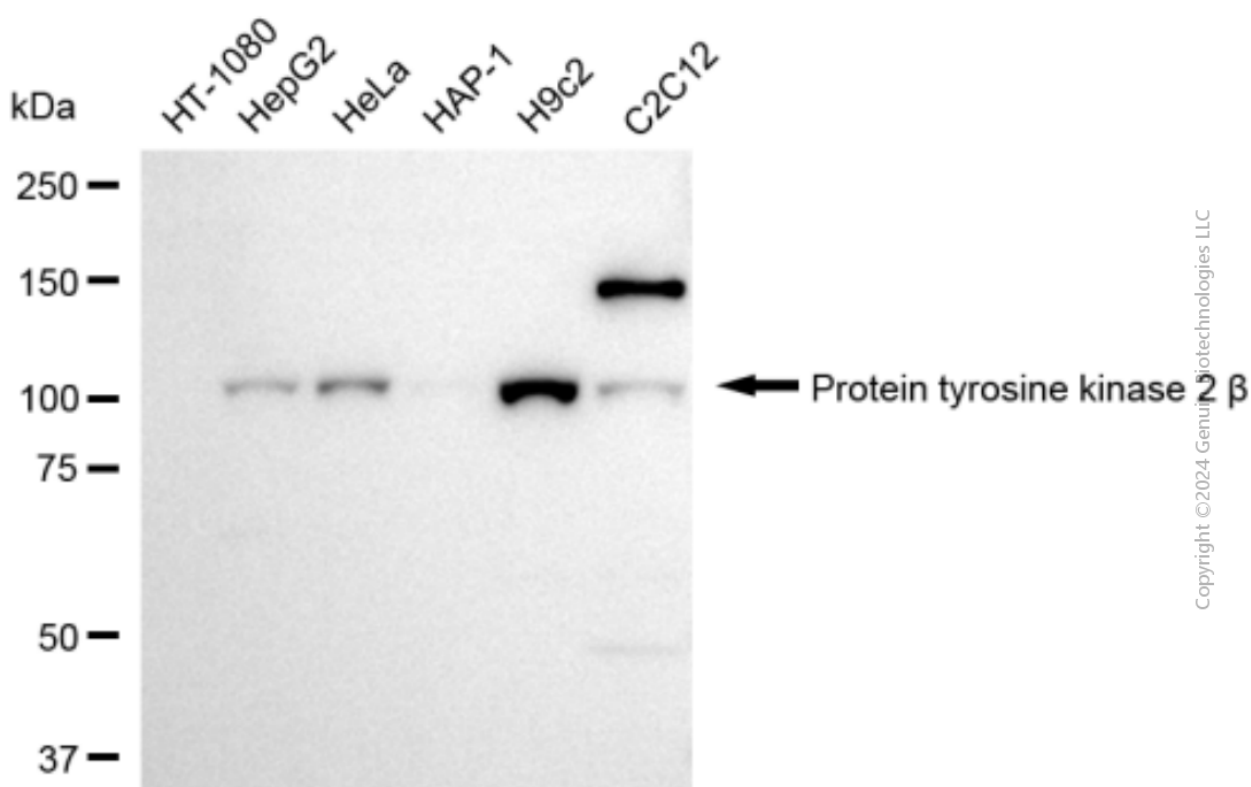
### ORDERS

SALES@GENUINBIOTECH.COM  
FAX: +1-540-855-7041

[WWW.GENUINBIOTECH.COM](http://WWW.GENUINBIOTECH.COM)

## Anti-Protein Tyrosine Kinase 2 Beta Recombinant Rabbit Monoclonal Antibody

PAGE 3



Western blotting analysis using anti-Protein tyrosine kinase 2 beta antibody (Cat#2503). Total cell lysates (30 µg) from various cell lines were loaded and separated by SDS-PAGE. The blot was incubated with anti-Protein tyrosine kinase 2 beta antibody (Cat#2503, 1:5,000) and HRP-conjugated goat anti-rabbit secondary antibody (Cat#201, 1:20,000) respectively. Image was developed using FeQ™ ECL Substrate Kit (Cat#226).

### SUPPORT

SUPPORT@GENUINBIOTECH.COM  
TEL: +1-540-855-7041

### ORDERS

SALES@GENUINBIOTECH.COM  
FAX: +1-540-855-7041

[WWW.GENUINBIOTECH.COM](http://WWW.GENUINBIOTECH.COM)