

Anti-PDGFR α Recombinant Rabbit Monoclonal Antibody



Catalog #: 2505

Aliases

Platelet Derived Growth Factor Receptor Alpha; PDGFR2; CD140a; Platelet-Derived Growth Factor Receptor, Alpha Polypeptide; Alpha-Type Platelet-Derived Growth Factor Receptor; Platelet-Derived Growth Factor Receptor Alpha; Platelet-Derived Growth Factor Receptor 2; CD140 Antigen-Like Family Member A; CD140a Antigen; PDGF-R-Alpha; EC 2.7.10.1; PDGFR-2; GAS9; Alpha Platelet-Derived Growth Factor Receptor; Platelet-Derived Growth Factor Alpha Receptor; PDGFR-Alpha; RHEPDGFR α ; EC 2.7.10

Background

Gene Name: PDGFR α

NCBI Gene Entry: [5156](#)

UniProt Entry: [P16234](#)

Application Information

Molecular Weight: Predicted, 123 kDa; observed, 190 kDa

Clonality: Rabbit monoclonal antibody

Clone ID: 24GB1165

Species Reactivity: Human, mouse

Applications Tested: Western blotting (WB), flow cytometry (FCM)

Immunogen

A synthesized peptide derived from human PDGFR α

Isotype

Rabbit IgG

Storage Buffer

Supplied in PBS (pH 7.4) containing 50% glycerol, and 0.02% sodium azide.

Storage

Store at -20 °C for one year.

Recommended Dilutions

Western Blotting (WB): 1:1,000-1:5,000, Flow Cytometry (FCM): 1:2,000

SUPPORT

SUPPORT@GENUINBIOTECH.COM
TEL: +1-540-855-7041

ORDERS

SALES@GENUINBIOTECH.COM
FAX: +1-540-855-7041

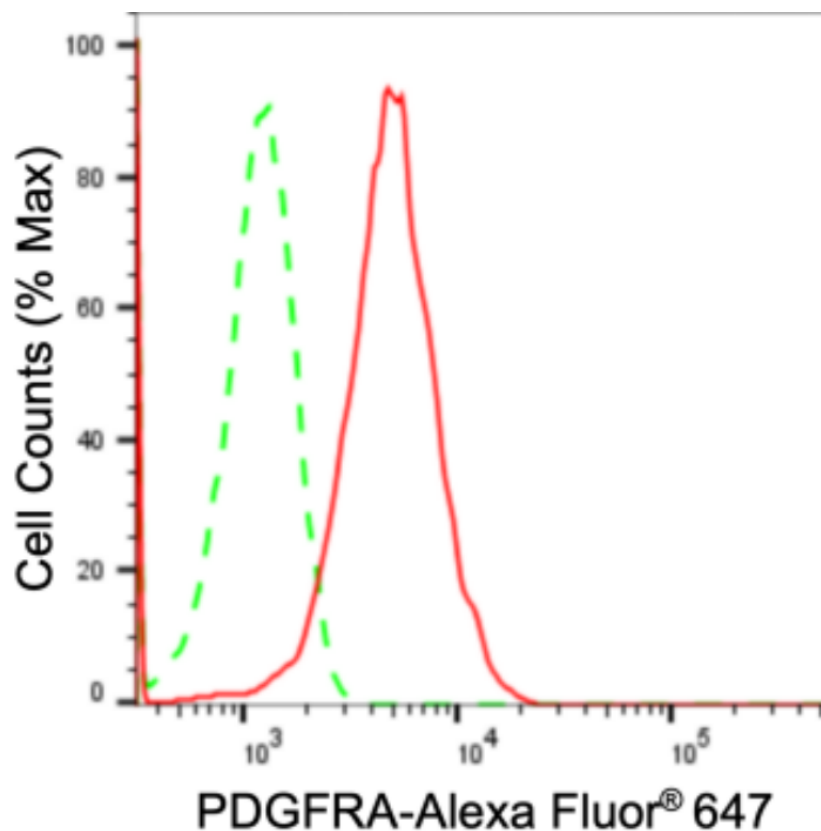
WWW.GENUINBIOTECH.COM

Anti-PDGFR α Recombinant Rabbit Monoclonal Antibody

PAGE 2

Note: This product is for research use only.

Validation Data



Copyright ©2024 Genuin Biotechnologies LLC

Flow cytometric analysis of PDGFRA expression in HAP-1 cells using anti-PDGFR α antibody (Cat#2505, 1:2,000). Green, isotype control; red, PDGFRA.

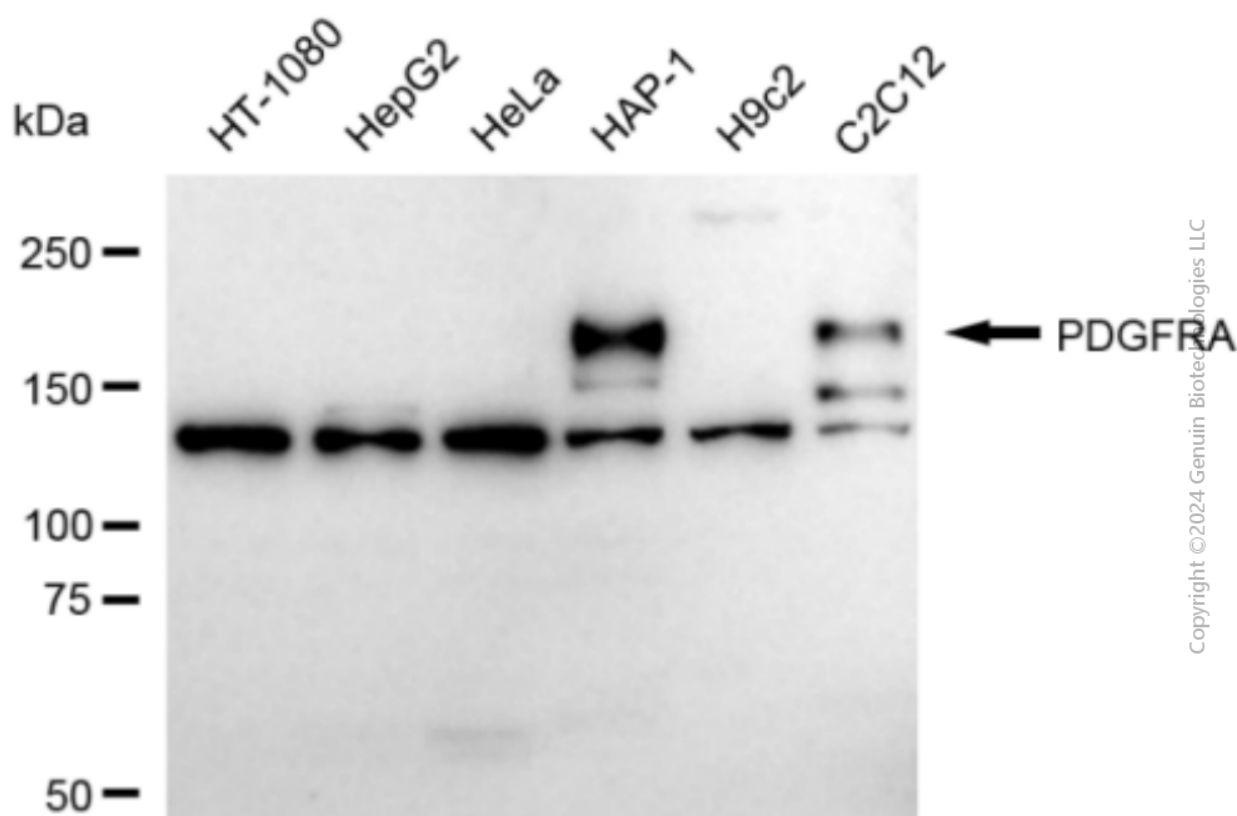
SUPPORT

SUPPORT@GENUINBIOTECH.COM
TEL: +1-540-855-7041

ORDERS

SALES@GENUINBIOTECH.COM
FAX: +1-540-855-7041

WWW.GENUINBIOTECH.COM



Western blotting analysis using anti-PDGFR α antibody (Cat#2505). Total cell lysates (30 μ g) from various cell lines were loaded and separated by SDS-PAGE. The blot was incubated with anti-PDGFR α antibody (Cat#2505, 1:5,000) and HRP-conjugated goat anti-rabbit secondary antibody (Cat#201, 1:20,000) respectively. Image was developed using FeQTM ECL Substrate Kit (Cat#226).