

Anti-Selectin P Recombinant Rabbit Monoclonal Antibody



Catalog #: 2506

Aliases

Selectin P; PADGEM; GMP140; CD62P; CD62; PSEL; GRMP; Platelet Activation Dependent Granule-External Membrane Protein; Selectin P (Granule Membrane Protein 140kDa, Antigen CD62); Leukocyte-Endothelial Cell Adhesion Molecule 3; CD62 Antigen-Like Family Member P; Granule Membrane Protein 140kDa; Granule Membrane Protein 140; P-Selectin; GMP-140; LECAM3; Selectin P (Granule Membrane Protein 140kD, Antigen CD62); Platelet Alpha-Granule Membrane Protein; Granulocyte Membrane Protein; CD62P Antigen; Antigen CD62; GMRP

Background

Gene Name: SELP

NCBI Gene Entry: [6403](#)

UniProt Entry: [P16109](#)

Application Information

Molecular Weight: Predicted, 91 kDa; observed, 105 kDa

Clonality: Rabbit monoclonal antibody

Clone ID: 24GB1170

Species Reactivity: Human, mouse, rat

Applications Tested: Western blotting (WB), flow cytometry (FCM), immunocytochemistry (IC)

Immunogen

A synthesized peptide derived from human CD62P

Isotype

Rabbit IgG

Storage Buffer

Supplied in PBS (pH 7.4) containing 50% glycerol, and 0.02% sodium azide.

Storage

Store at -20 °C for one year.

Recommended Dilutions

Western Blotting (WB): 1:1,000-1:5,000

Flow Cytometry (FCM): 1:2,000

Immunocytochemistry (IC): 1:100-1:1,000

SUPPORT

SUPPORT@GENUINBIOTECH.COM
TEL: +1-540-855-7041

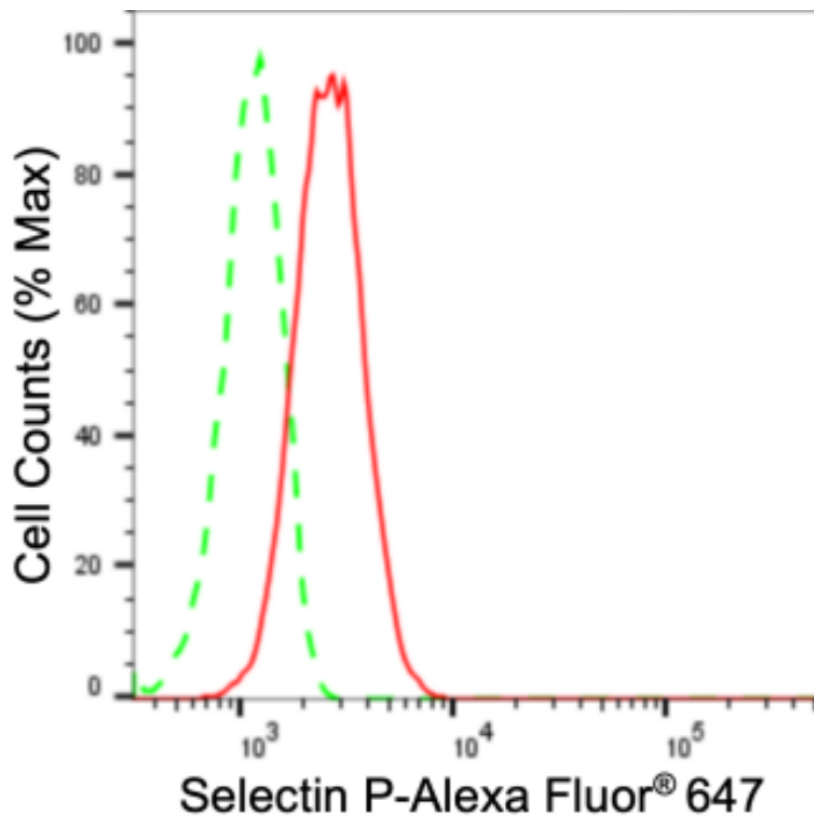
ORDERS

SALES@GENUINBIOTECH.COM
FAX: +1-540-855-7041

WWW.GENUINBIOTECH.COM

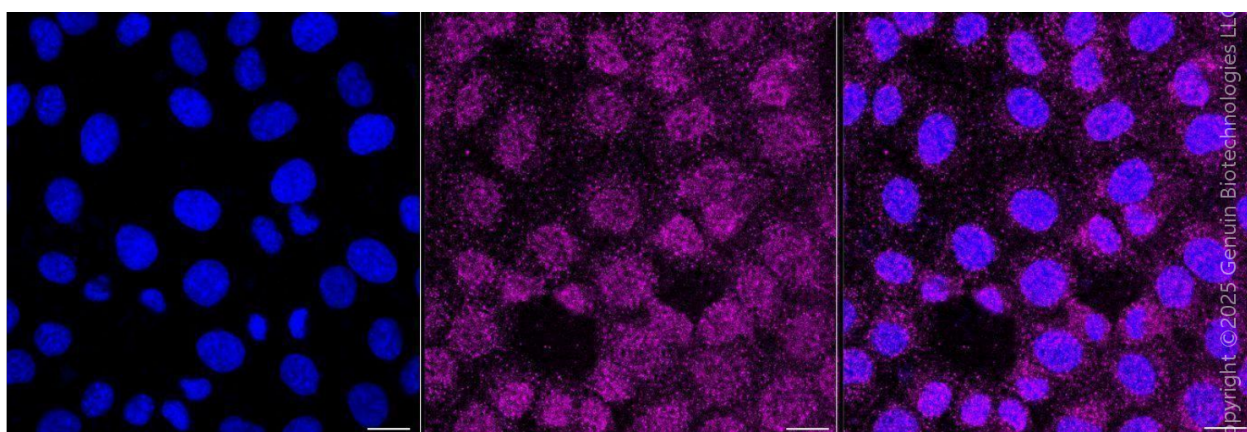
Note: This product is for research use only.

Validation Data



Copyright ©2024 Genuin Biotechnologies LLC

Flow cytometric analysis of Selectin P expression in HT-1080 cells using anti-Selectin P antibody (Cat#2506, 1:2,000). Green, isotype control; red, Selectin P.



Copyright ©2025 Genuin Biotechnologies LLC

Immunocytochemical staining of HT-1080 cells with anti-Selectin P antibody (Cat#2506, 1:1,000). Nuclei were stained blue with DAPI; Selectin P was stained magenta with Alexa Fluor® 647. Images were taken using Leica stellaris 5. Protein abundance based on laser Intensity and smart gain: Low. Scale bar, 20 μm.

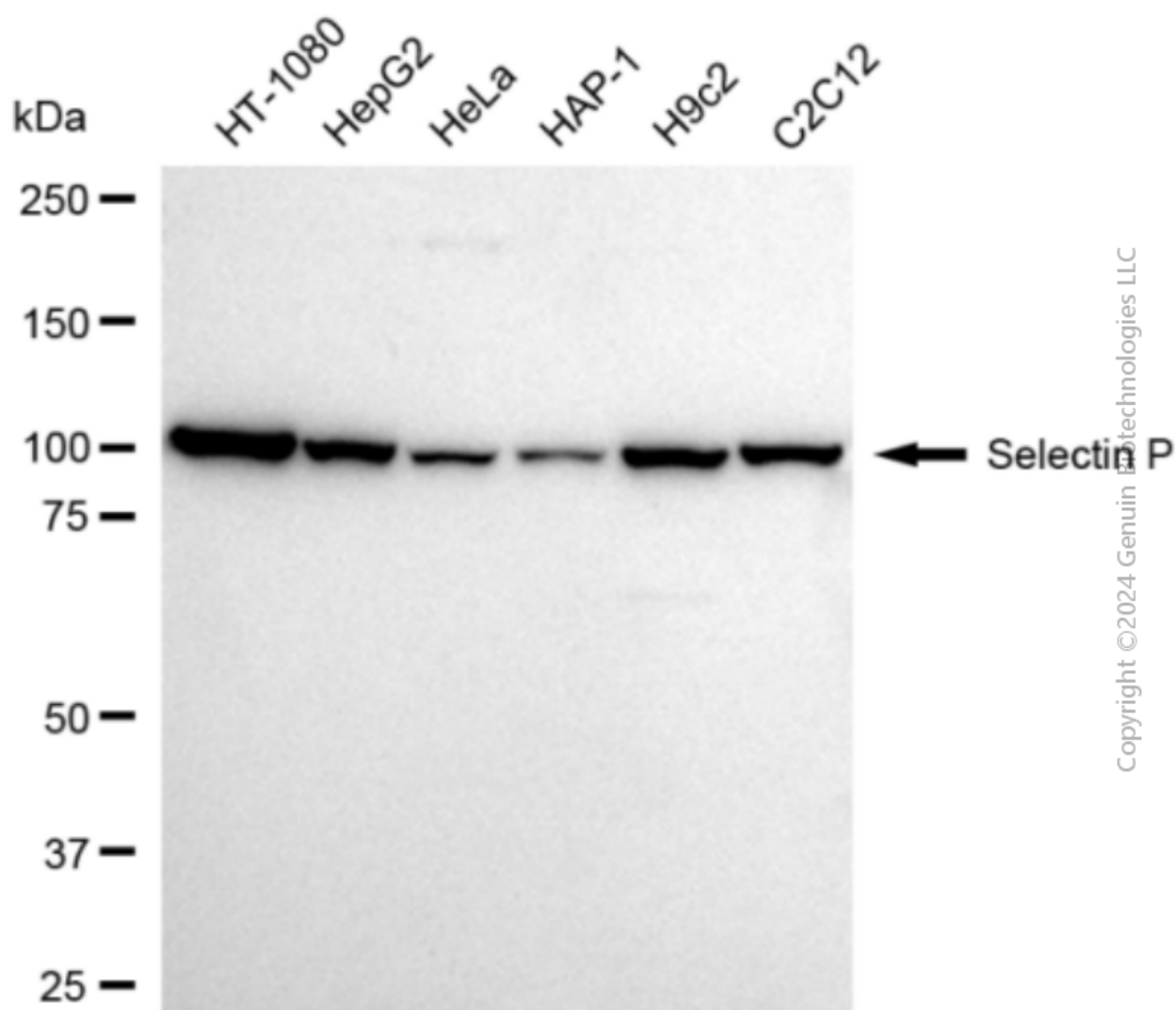
SUPPORT

SUPPORT@GENUINBIOTECH.COM
TEL: +1-540-855-7041

ORDERS

SALES@GENUINBIOTECH.COM
FAX: +1-540-855-7041

WWW.GENUINBIOTECH.COM



Copyright ©2024 Genuin Biotechnologies LLC

Western blotting analysis using anti-Selectin P antibody (Cat#2506). Total cell lysates (30 μ g) from various cell lines were loaded and separated by SDS-PAGE. The blot was incubated with anti-Selectin P antibody (Cat#2506, 1:5,000) and HRP-conjugated goat anti-rabbit secondary antibody (Cat#201, 1:20,000) respectively. Image was developed using FeQ™ ECL Substrate Kit (Cat#226).