

Anti-Phospho-POLR2A (S5) Subunit A Recombinant Rabbit Monoclonal Antibody



Catalog #: 2508

Aliases

RNA Polymerase II Subunit A; RNA Polymerase II Subunit B1; POLRA; POLR2; RPB1; DNA-Directed RNA Polymerase II Largest Subunit, RNA Polymerase II 220 Kd Subunit; Polymerase (RNA) II (DNA Directed) Polypeptide A, 220kDa; DNA-Directed RNA Polymerase III Largest Subunit; DNA-Directed RNA Polymerase II Subunit RPB1; RNA-Directed RNA Polymerase II Subunit RPB1; DNA-Directed RNA Polymerase II Subunit A; EC 2.7.7.6; Polymerase (RNA) II Subunit A; EC 2.7.7.48; HRPB220; NEDHIB; RpIILS; HsRPB1; RPBh1; RPOL2; RPO2

Background

Gene Name: POLR2A

NCBI Gene Entry: [5430](#)

UniProt Entry: [P24928](#)

Application Information

Molecular Weight: Predicted, 217 kDa; observed, 270 kDa

Clonality: Rabbit monoclonal antibody

Clone ID: 24GB1180

Species Reactivity: Human, mouse, rat

Applications Tested: Western blotting (WB), flow cytometry (FCM), immunocytochemistry (IC)

Immunogen

A synthesized peptide derived from human Phospho-POLR2A (S5)

Isotype

Rabbit IgG

Storage Buffer

Supplied in PBS (pH 7.4) containing 50% glycerol, and 0.02% sodium azide.

Storage

Store at -20 °C for one year.

Recommended Dilutions

Western Blotting (WB): 1:1,000-1:5,000

Flow Cytometry (FCM): 1:2,000

Immunocytochemistry (IC): 1:100-1:1,000

SUPPORT

SUPPORT@GENUINBIOTECH.COM
TEL: +1-540-855-7041

ORDERS

SALES@GENUINBIOTECH.COM
FAX: +1-540-855-7041

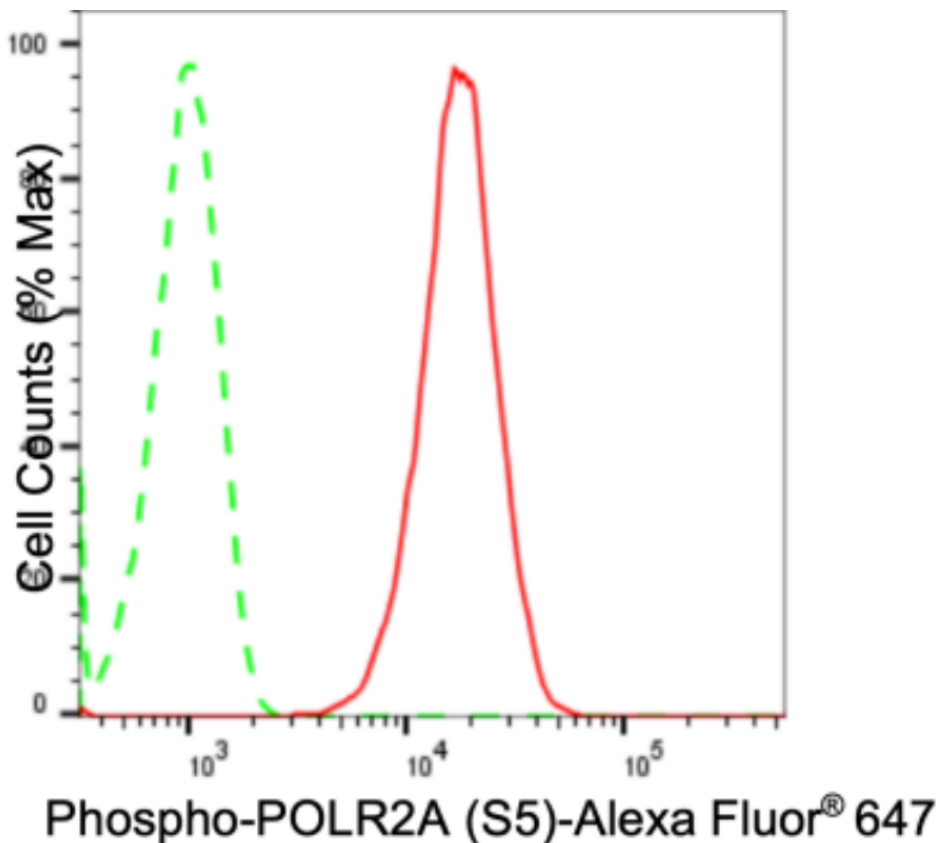
WWW.GENUINBIOTECH.COM

Anti-Phospho-POLR2A (S5) Subunit A Recombinant Rabbit Monoclonal Antibody

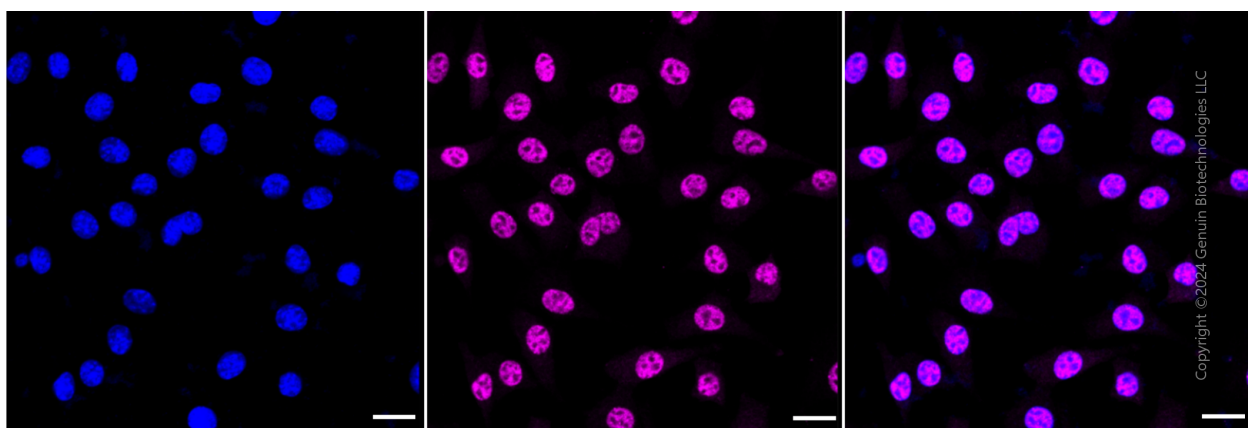
PAGE 2

Note: This product is for research use only.

Validation Data



Flow cytometric analysis of Phospho-POLR2A (S5) expression in C2C12 cells using anti-Phospho-POLR2A (S5) antibody (Cat#2508, 1:2,000). Green, isotype control; red, Phospho-POLR2A (S5).



Immunocytochemical staining of C2C12 cells with anti-Phospho-POLR2A (S5) antibody (Cat#2508, 1:1,000). Nuclei were stained blue with DAPI; Phospho-POLR2A (S5) was stained magenta with Alexa Fluor® 647. Images were taken using Leica stellaris 5. Protein abundance

SUPPORT

SUPPORT@GENUINBIOTECH.COM
TEL: +1-540-855-7041

ORDERS

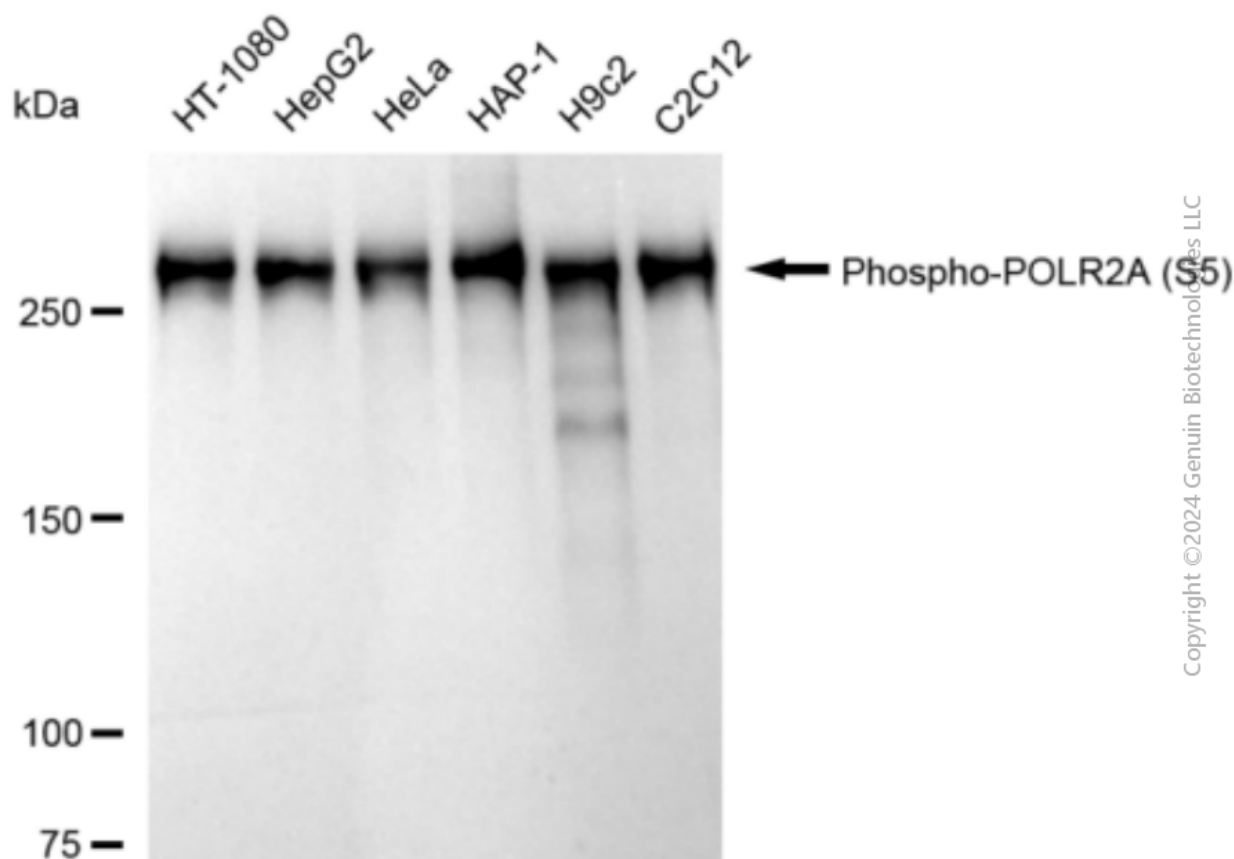
SALES@GENUINBIOTECH.COM
FAX: +1-540-855-7041

WWW.GENUINBIOTECH.COM

Anti-Phospho-POLR2A (S5) Subunit A Recombinant Rabbit Monoclonal Antibody

PAGE 3

based on laser Intensity and smart gain: High. Scale bar: 20 μ m.



Copyright ©2024 Genuin Biotechnologies LLC

Western blotting analysis using anti-Phospho-POLR2A (S5) antibody (Cat#2508). Total cell lysates (30 μ g) from various cell lines were loaded and separated by SDS-PAGE. The blot was incubated with anti-Phospho-POLR2A (S5) antibody (Cat#2508, 1:5,000) and HRP-conjugated goat anti-rabbit secondary antibody (Cat#201, 1:20,000) respectively. Image was developed using FeQ™ ECL Substrate Kit (Cat#226).

SUPPORT

SUPPORT@GENUINBIOTECH.COM
TEL: +1-540-855-7041

ORDERS

SALES@GENUINBIOTECH.COM
FAX: +1-540-855-7041

WWW.GENUINBIOTECH.COM